

# 42

## SAMOR ROAD

TORONTO, ON

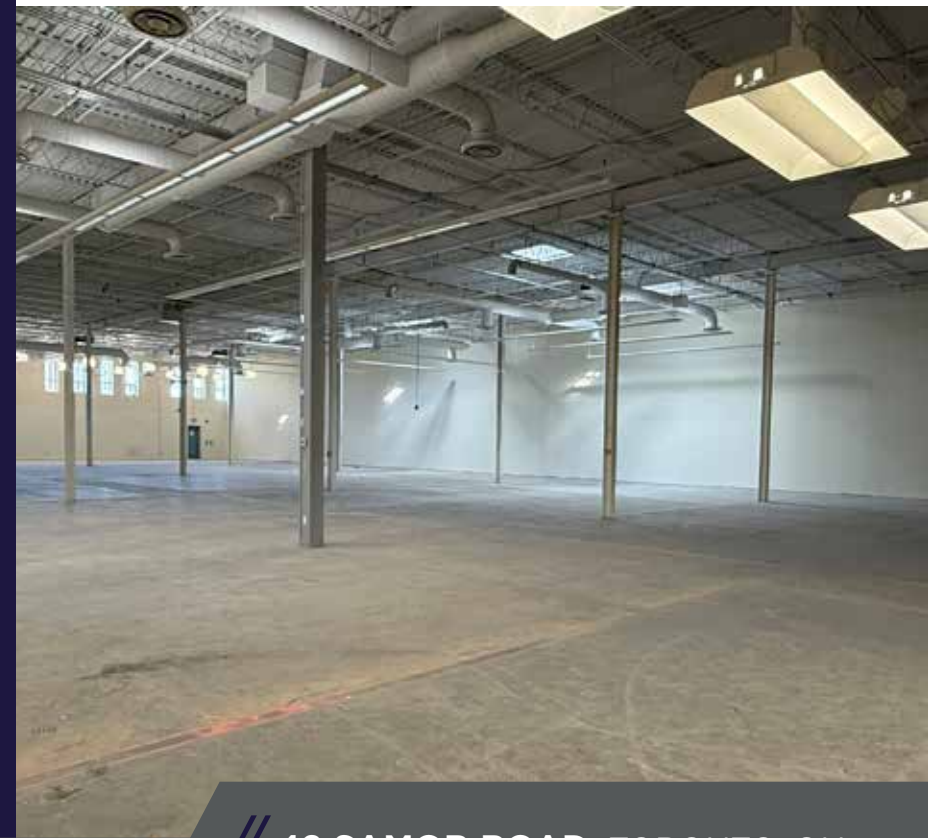
**FOR LEASE**  
14,000 - 28,000 SF

 **CUSHMAN &  
WAKEFIELD**

# // BUILDING SPECIFICATIONS

<b>INTERSECTION</b>	Dufferin Street & Lawrence Avenue
<b>SIZE AVAILABLE</b>	28,000 SF Divisible to 14,000 SF
<b>CLEAR HEIGHT</b>	20'
<b>SHIPPING</b>	1 TL
<b>ZONING</b>	MC (H)
<b>POWER</b>	600A/120V
<b>NET RENT</b>	\$15.95 psf (28,000 SF) \$17.50 psf (14,000 SF)
<b>TMI</b>	\$4.00 psf
<b>OCCUPANCY</b>	Immediate

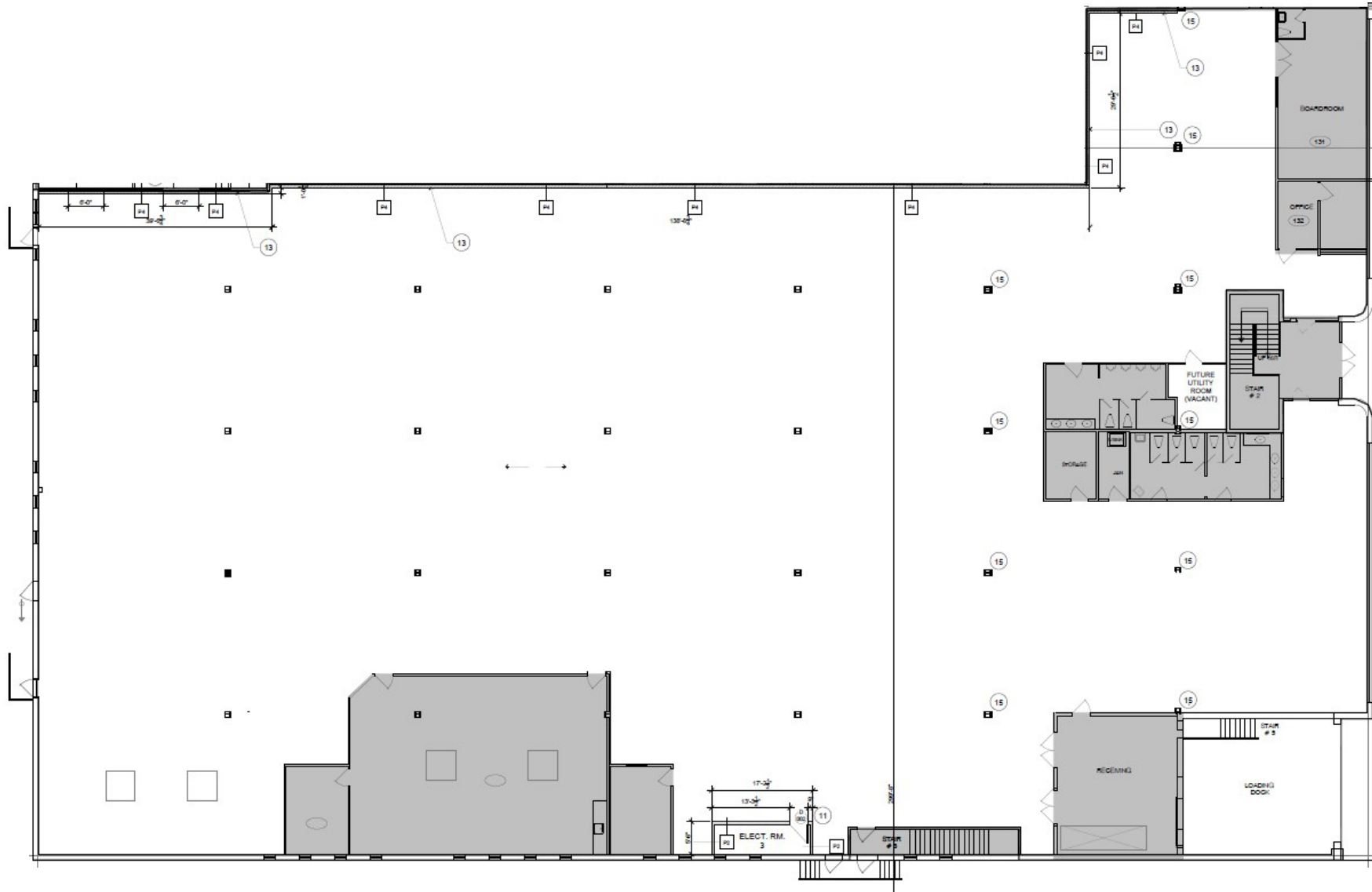
- 28,000 SF unit divisible to two units of 14,000 SF
- Great location off Dufferin Street
- Fully air-conditioned space
- Additional Shipping Doors can be added
- Close proximity to Highways 401, Allen Road and steps to public transit



# // INTERIOR IMAGES



# // FLOOR PLAN







# 42

## SAMOR ROAD

TORONTO, ON



### CONTACT

**GORAN BRELIH, SIOR**  
EXECUTIVE VICE PRESIDENT, BROKER  
416.458.4264  
[goran.brelih@cushwake.com](mailto:goran.brelih@cushwake.com)

**DIANA MCKENNON**  
SALES REPRESENTATIVE  
647.400.9801  
[diana.mckennon@cushwake.com](mailto:diana.mckennon@cushwake.com)



©2026 Cushman & Wakefield. All rights reserved. The information contained in this communication is strictly confidential. This information has been obtained from sources believed to be reliable but has not been verified. NO WARRANTY OR REPRESENTATION, EXPRESS OR IMPLIED, IS MADE AS TO THE CONDITION OF THE PROPERTY (OR PROPERTIES) REFERENCED HEREIN OR AS TO THE ACCURACY OR COMPLETENESS OF THE INFORMATION CONTAINED HEREIN, AND SAME IS SUBMITTED SUBJECT TO ERRORS, OMISSIONS, CHANGE OF PRICE, RENTAL OR OTHER CONDITIONS, WITHDRAWAL WITHOUT NOTICE, AND TO ANY SPECIAL LISTING CONDITIONS IMPOSED BY THE PROPERTY OWNER(S). ANY PROJECTIONS, OPINIONS OR ESTIMATES ARE SUBJECT TO UNCERTAINTY AND DO NOT SIGNIFY CURRENT OR FUTURE PROPERTY PERFORMANCE.