



one america

a better way
to downtown

ONE AMERICAN SQ. | INDIANAPOLIS, IN

a workplace
experience

PROPERTY HIGHLIGHTS

38-story Class-A building

700,000 total SF

Full-floor and big-block availabilities

Convenient access to I-65 and I-70

**Convenient walkability to dining,
retail, hotels and attractions**

On-site amenities:
fitness center, parking garage, Atrium
Market, Skyline Club and more

A TOWER ABOVE THE REST

Rising 38 stories above Monument Circle,

OneAmerica Tower stands as one of Indianapolis'

most prestigious business addresses. With

700,000 square feet of luxury office space, the Class

A tower blends scale and convenience in the heart

of the city. Tenants are surrounded by high-end

amenities, on-site services and walkable access to

dining, hotels and attractions, creating a workplace

experience that goes well beyond the office.

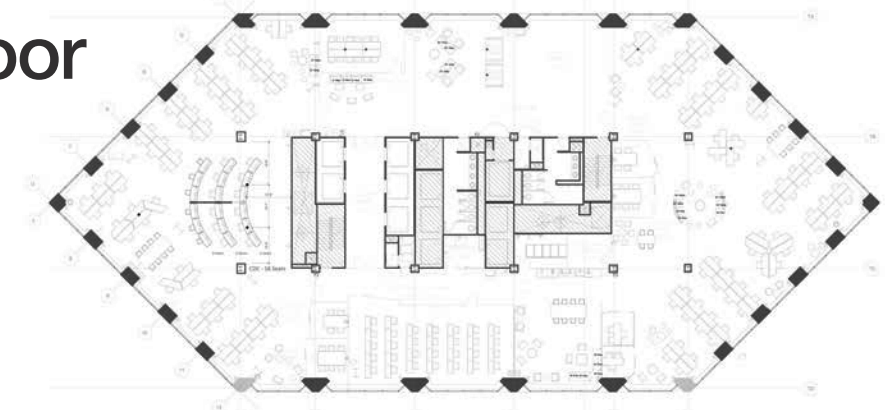
DESIGNED TO FIT YOUR VISION

With full-floor and big-block availabilities, OneAmerica Tower offers

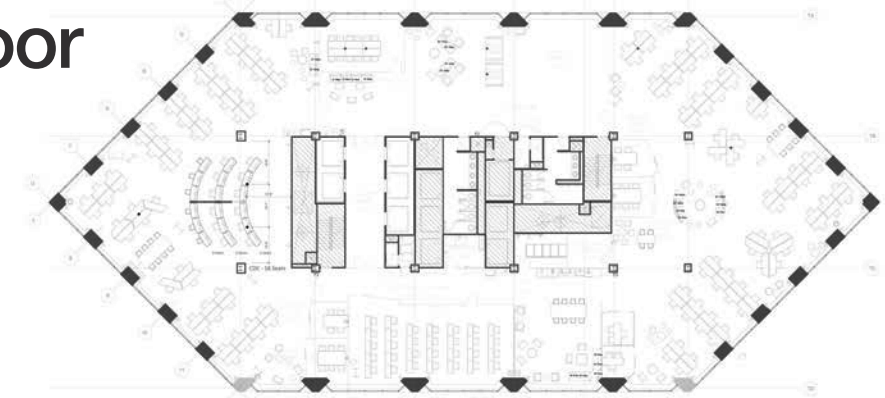
the flexibility to scale your workplace with ease. Expansive floor plans and

modern infrastructure create a seamless fit for teams of any size.

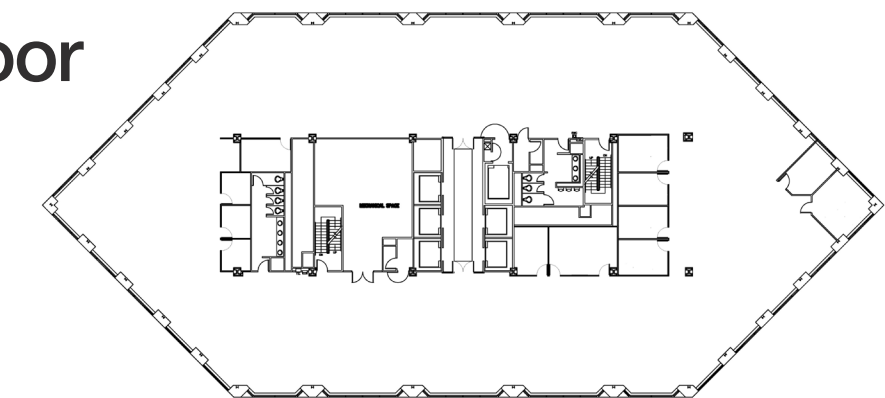
23rd floor



24th floor




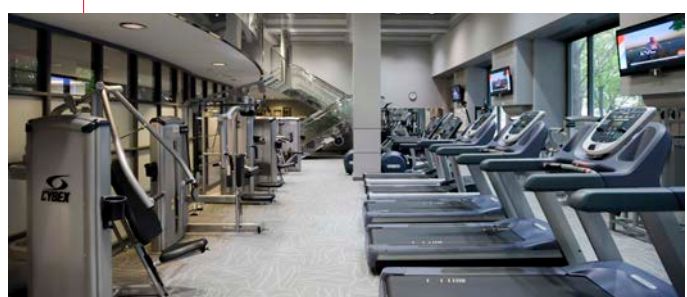




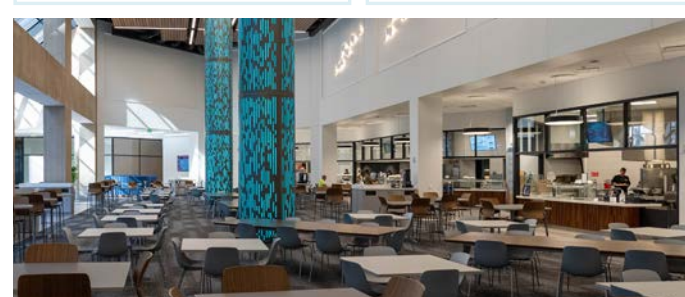
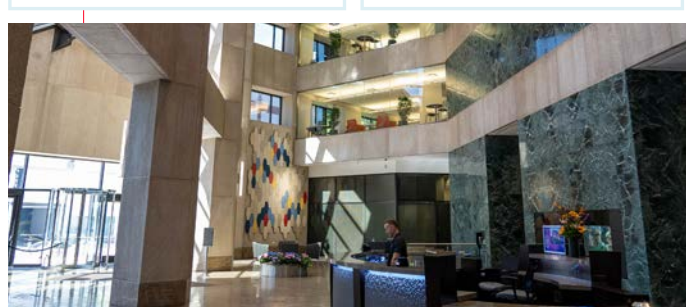




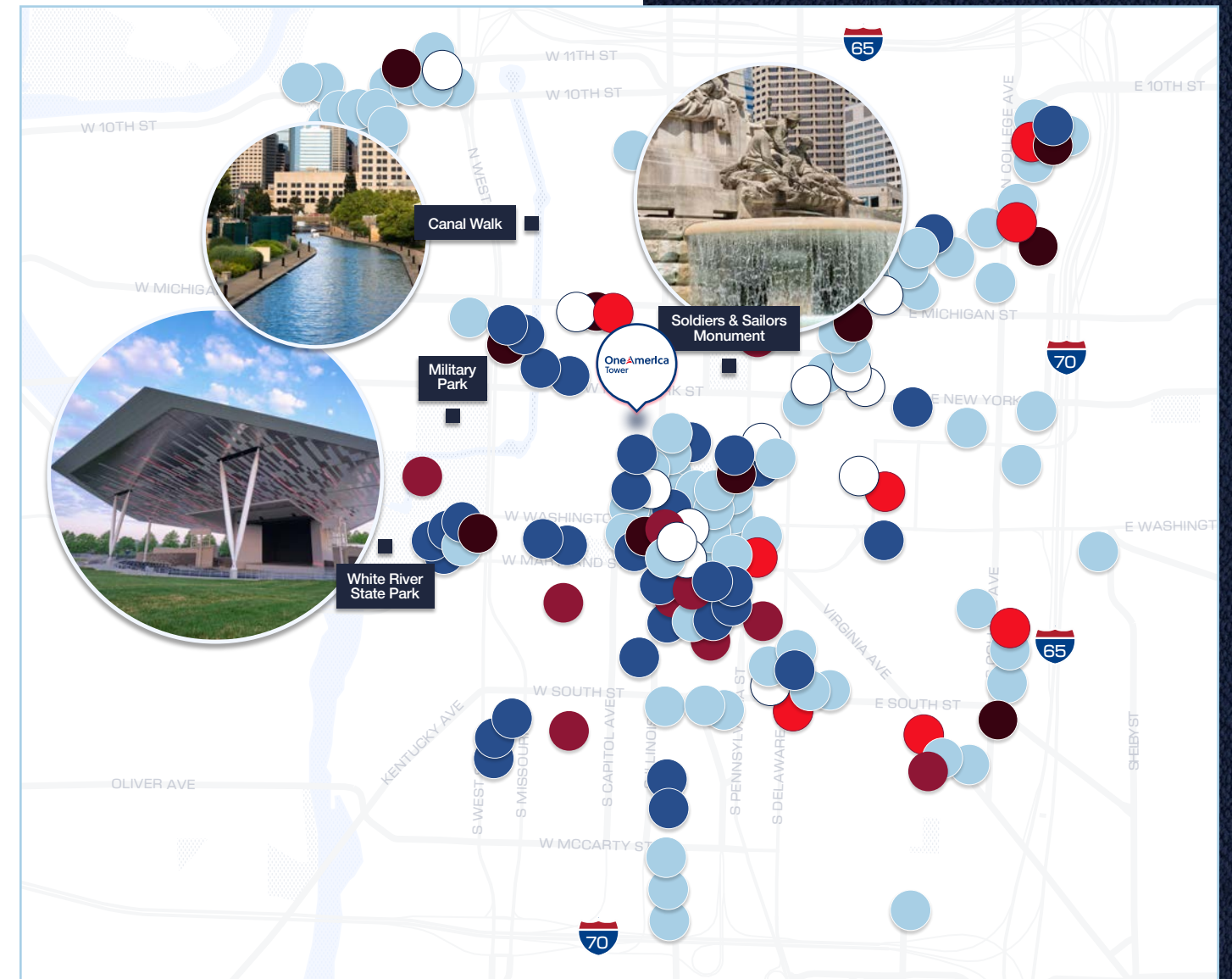
27th floor



THE LUXURY OF CONVENIENCE

From morning workouts to client dinners, OneAmerica Tower surrounds tenants with on-site amenities that elevate the **workday**. Inside, chef-driven dining, skyline views, exclusive clubs and wellness spaces create an environment designed to impress clients, support teams and make every day seamless.

 <p>Outdoor Courtyard</p>	 <p>Full-Service Atrium Market</p>	
	 <p>The National Bank of Indianapolis</p>	 <p>Modern Fitness Center</p>
 <p>Skyline Club</p>	 <p>On-Site Security Personnel</p>	
	 <p>Tower Conference Center</p>	 <p>Underground Parking</p>



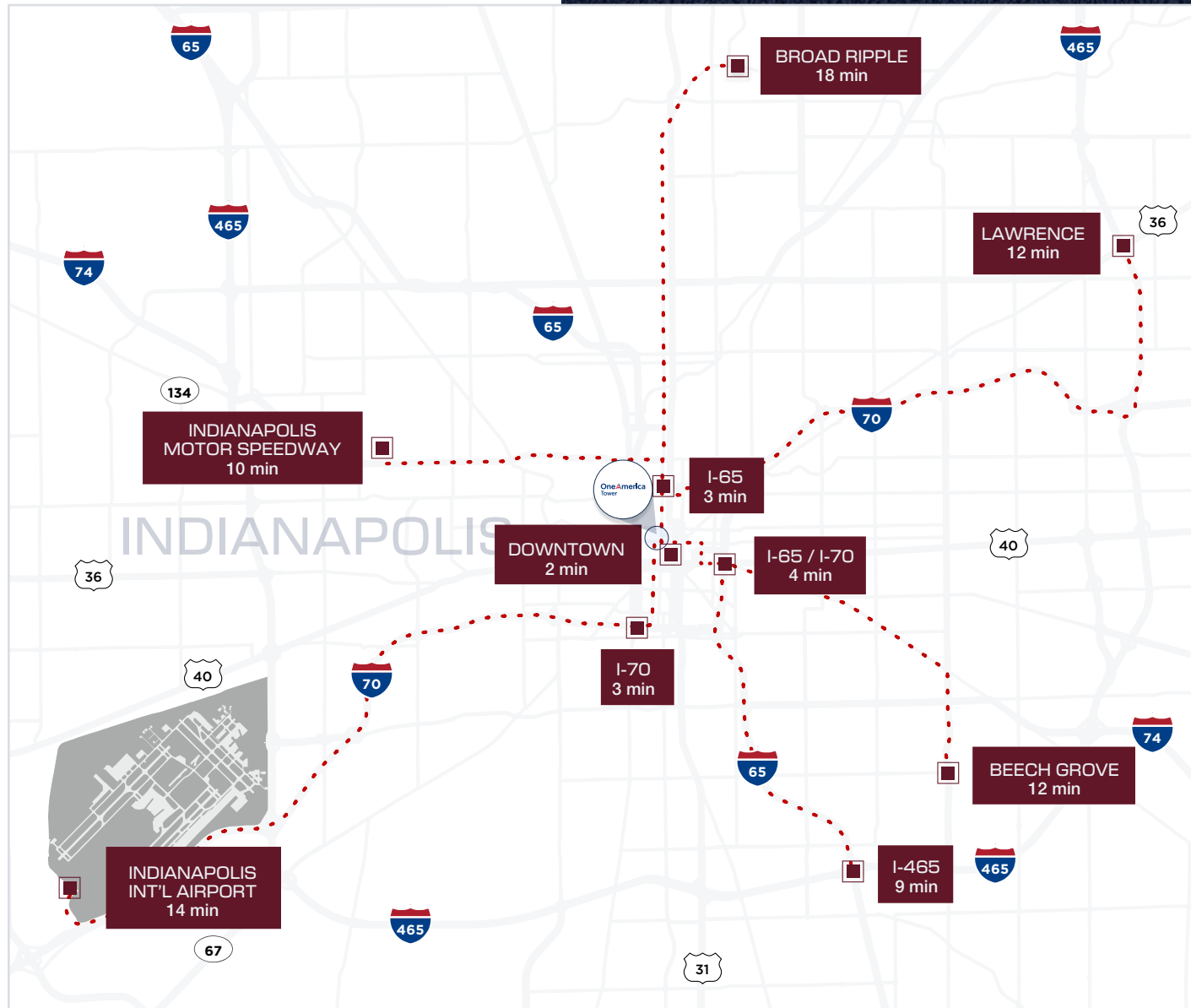
YOUR INSIDE TRACK TO INDY

OneAmerica Tower puts the best of Indianapolis right at your doorstep. From award-winning dining and boutique hotels to cultural attractions and green space, everything you need is a short walk away. Steps from the Canal Walk and White River State Park, tenants enjoy direct access to the city's most vibrant experiences in every direction.

WALK SCORE: 97



experiences in every direction.



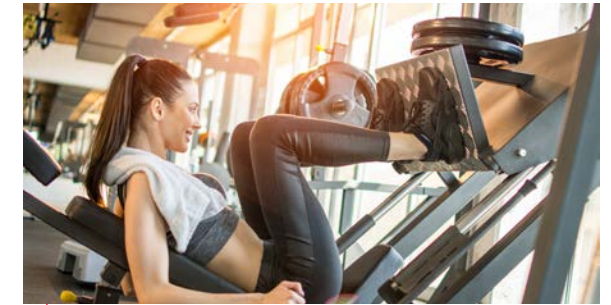
EASY IN, EASY OUT

Accessibility is part of the luxury at OneAmerica Tower. With a private underground garage, seamless access to I-65 and I-70, and convenient options for cyclists, every arrival feels efficient and effortless.

BIKE SCORE: 99

ALL IN A DAY'S WORK

From the first coffee of the morning to evening plans with clients, OneAmerica Tower keeps everything within reach.



8:00am

Start with a workout in the fully-equipped fitness center, then grab a coffee at Atrium Café on your way upstairs.



10:30am

Meet with your team in a spacious conference room, supported by building-wide catering services.



12:30pm

Step outside for a quick walk along the Canal Walk or enjoy lunch at Atrium Market's chef-driven stations.



3:00pm

Take care of errands without leaving the tower, then recharge outdoors in the courtyard.



5:30pm

Meet clients for dinner at the exclusive Skyline Club or head a few blocks over to White River State Park for an outdoor event.





One America Tower

for more
information,



RUSSELL VANTIL
+1 317 639 0546
russell.vantil@cushwake.com

JOSHUA GRAHAM
+1 317 639 0491
joshua.graham@cushwake.com

LUKE LONNEMAN
+1 317 352 5419
luke.lonneman@cushwake.com

©2025 cushman & wakefield. all rights reserved. the information contained in this communication is strictly confidential. this information has been obtained from sources believed to be reliable but has not been verified. no warranty or representation, express or implied, is made as to the condition of the property (or properties) referenced herein or as to the accuracy or completeness of the information contained herein, and same is submitted subject to errors, omissions, change of price, rental or other conditions, withdrawal without notice, and to any special listing conditions imposed by the property owner(s). any projections, opinions or estimates are subject to uncertainty and do not signify current or future property performance. coe-pm-central- 12/09/25