

**SPACES AVAILABLE  
FROM  $\pm 18,000$  SF  
TO  $\pm 152,000$  RSF**



**FOR LEASE**

**AIRPORT TECHNOLOGY PARK**

480 NORTH 2200 WEST ■ SALT LAKE CITY, UTAH





# AIRPORT TECHNOLOGY PARK

480 NORTH 2200 WEST ■ SALT LAKE CITY, UTAH

The **Airport Technology Park** is a 79 acre campus located just east of the Salt Lake City International Airport. The park is comprised of eight buildings totaling more than 1.4M square feet.

The Park has abundant power with on-site electrical switch and substations that provide redundant power to the campus at an estimated 25% cost savings. The property is served by both the northern and southern power grid, which greatly reduces the risk of outages. Added tenant generators and a UPS System further supplement an already robust electrical system.



**BUILDING SPACES AVAILABLE**  
±18,000 RSF-  
±152,432 RSF



**SITE ELECTRICAL SERVICE**  
11,200 Amp  
with 277/480  
volt pad-mounted transformer



**SUPERIOR ACCESS TO I-215 via 700 North**  
Immediate Freeway access to I-215 and I-80



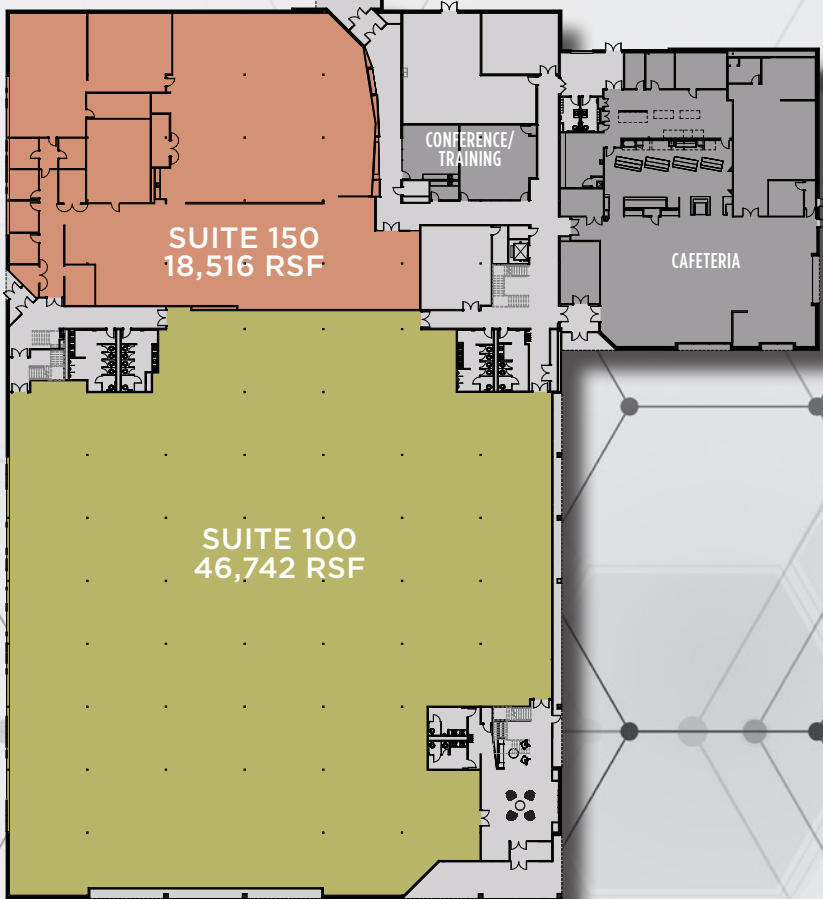
**NEARBY TRANSPORTATION**  
Trax stop  
with direct access to Salt Lake City International Airport

## ADDITIONAL FEATURES

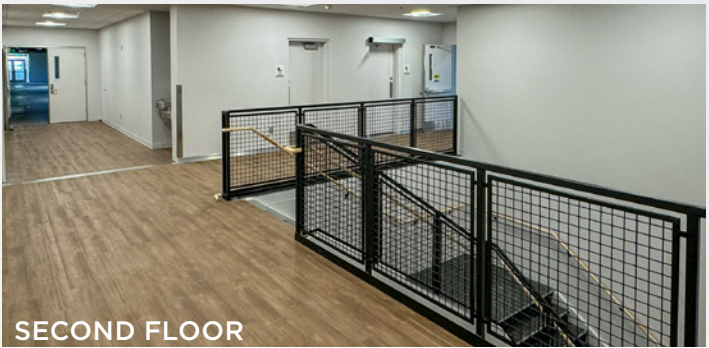
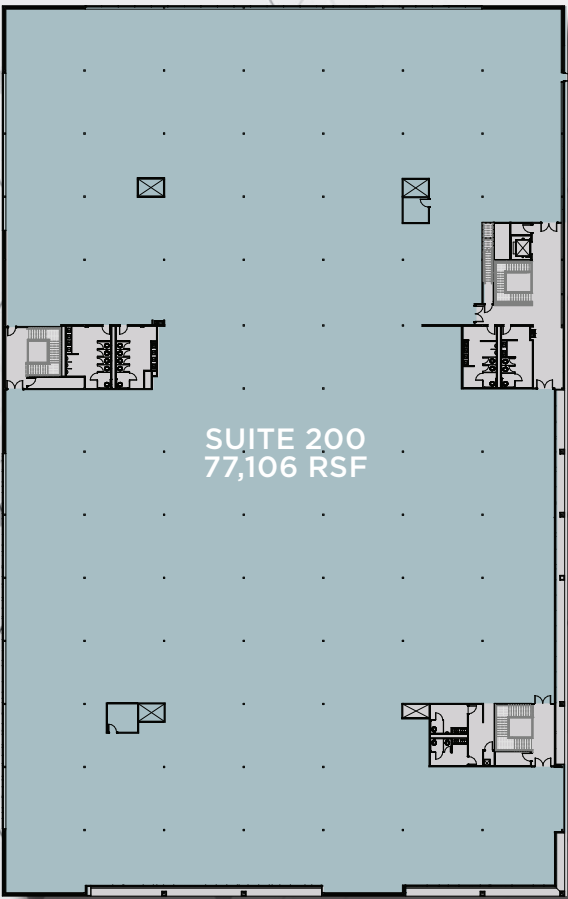
- **Full Service Cafeteria**
- **505 Parking Stalls**
- **Zoned M-1 (Light Manufacturing)**
- **\$21.00 Per Square Foot, NNN**
- **Within minutes of numerous restaurants, lodging, and the airport**
- **Crown signage available**
- **Site Electrical Service** 11,200 Amp with 277/480 volt pad-mounted transformer
- **Building Emergency System** 3,050kW, 4601.1 Amp service with above ground diesel storage and a 500KVA UPS System
- **HVAC System** Existing - Two (2) central hot water boilers at 2009 MBH total. Two (2) centrifugal chillers with cooling tower, 200 tons each.

## FLOOR PLANS

### FIRST FLOOR



### SECOND FLOOR





# AIRPORT TECHNOLOGY PARK

480 NORTH 2200 WEST ■ SALT LAKE CITY, UTAH



FOR ADDITIONAL INFORMATION, PLEASE CONTACT:

## Mike Richmond

Executive Managing Director  
+1 801 303 5434  
mike.richmond@cushwake.com

## Dana Baird, CCIM

Executive Managing Director  
+1 801 303 5526  
dana.baird@cushwake.com

## Hannah King

Associate  
+1 801 303 5440  
hannah.king1@cushwake.com



**CUSHMAN &  
WAKEFIELD**

170 South Main Street Suite 1600  
Salt Lake City, UT 84101  
cushmanwakefield.com