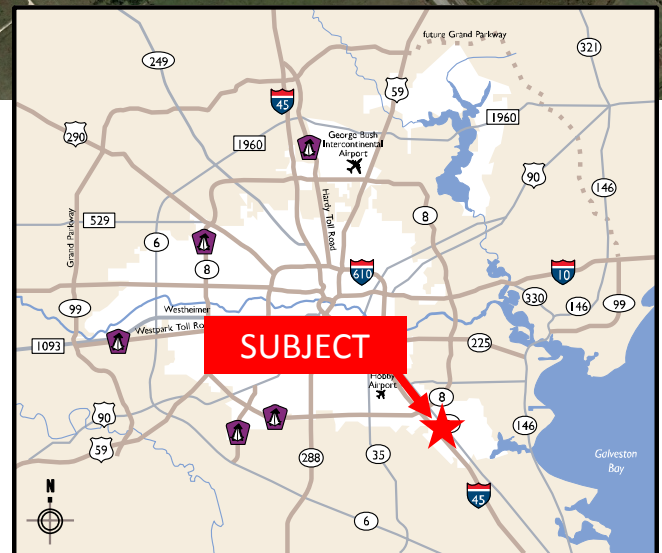


LAND – FOR SALE



- ±2.742 acres
- ±362' frontage on Gulfstream Dr.
- ±336' frontage on Ellington Park Drive
- Close proximity to Ellington Field
- City of Houston Utilities
- Call broker for pricing



For more information, contact:

**Coe Parker, SIOR**  
(713) 963 2825  
[Coe.Parker@cushwake.com](mailto:Coe.Parker@cushwake.com)

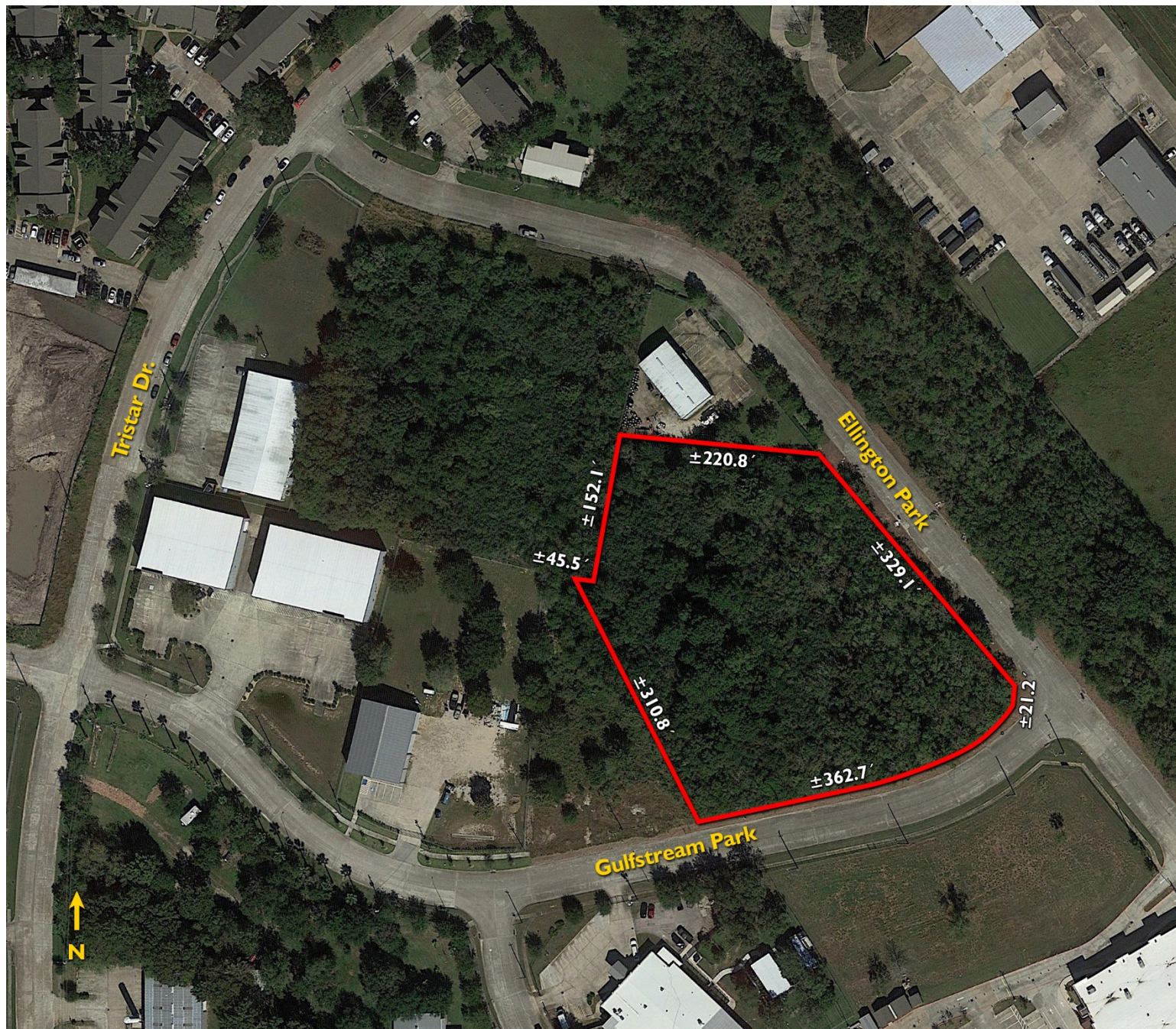
**B. Kelley Parker III, SIOR**  
(713) 963 2896  
[Kelley.Parker@cushwake.com](mailto:Kelley.Parker@cushwake.com)

**John F. Littman, SIOR**  
(713) 963 2862  
[John.Littman@cushwake.com](mailto:John.Littman@cushwake.com)

**Cushman & Wakefield**  
Licensed Real Estate Brokers  
1330 Post Oak Boulevard | Suite 2700  
Houston, TX 77056  
[www.cushmanwakefield.com](http://www.cushmanwakefield.com)



±2.742 Acres Land  
Webster, TX 77598



For more information, contact:

**Coe Parker, SIOR**  
(713) 963 2825

[Coe.Parker@cushwake.com](mailto:Coe.Parker@cushwake.com)

**B. Kelley Parker III, SIOR**  
(713) 963 2896

[Kelley.Parker@cushwake.com](mailto:Kelley.Parker@cushwake.com)

**John F. Littman, SIOR**  
(713) 963 2862

[John.Littman@cushwake.com](mailto:John.Littman@cushwake.com)

**Cushman & Wakefield**  
Licensed Real Estate Brokers  
1330 Post Oak Boulevard | Suite 2700  
Houston, TX 77056  
[www.cushmanwakefield.com](http://www.cushmanwakefield.com)