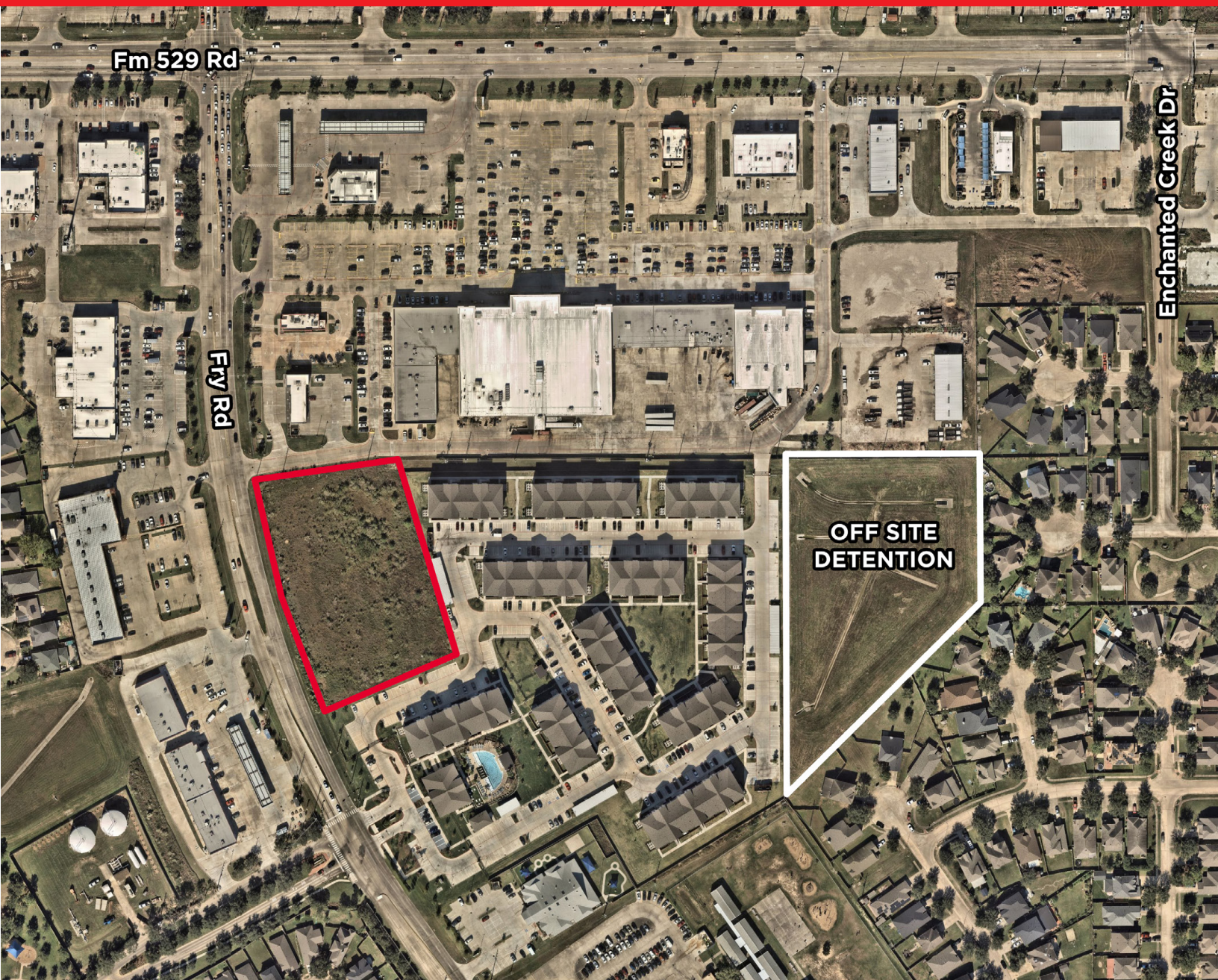


Fry Road, South of FM 529

±2.8 acres
HOUSTON, TX



KRISTEN MCDADE
Managing Director
T: +1 713 331 1796
kristen.mcdade@cushwake.com

CHARLIE MCGAHREN
Associate
T: +1 713 331 1772
charlie.mcgahren@cushwake.com

MATTHEW DAVIS
Senior Director
T: +1 713 331 1798
matthew.davis@cushwake.com



**CUSHMAN &
WAKEFIELD**

Fry Road, South of FM 529
±2.8 Acres
HOUSTON, TX



Fm 529 Rd

Fry Rd



Alta Spring
Cyprus



Duryea
Elementary
School

DEMOGRAPHICS

3 miles

HOUSEHOLDS



134,619

2024 Total Population



39,467

2024 Total Households



3.41

2024 Average Household Size



\$110,299

2024 Average Household Income



32.7

2024 Median Age



\$305,840

2024 Average Home Value

POPULATION



1.56%

2024-2029 Population: Compound Annual Growth Rate



51%

Male Population



49%

Female Population

EMPLOYMENT



86,205

2023 Total Daytime Population



22%

2023 Daytime Population: Workers



78%

2023 Daytime Population: Residents



3,049.6

2024 Daytime Population Density (Pop per Square Mile)



1,785

2024 Total Businesses



12,612

2024 Total Employees

EDUCATIONAL ATTAINMENT

20%

High School Diploma

5%

GED/Alternative Credential

20%

Some College/ No Degree

11%

Associate's Degree

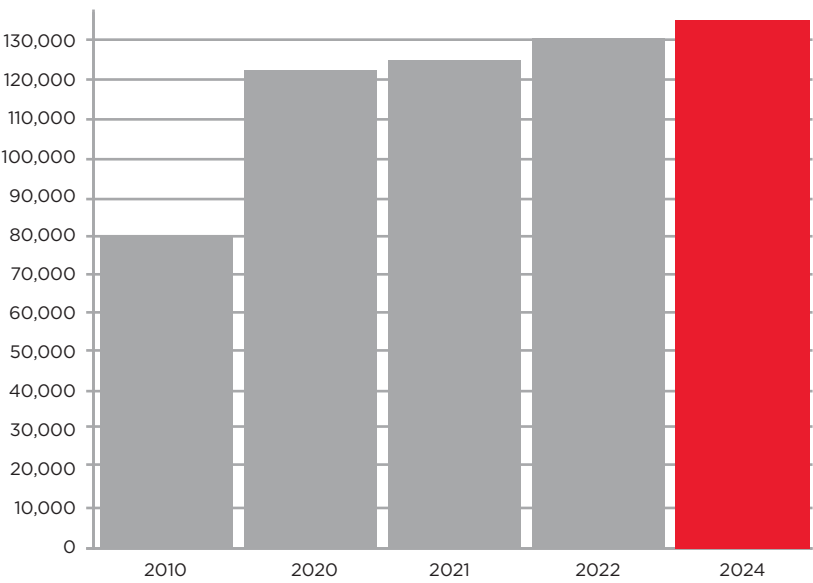
24%

Bachelor's Degree

10%

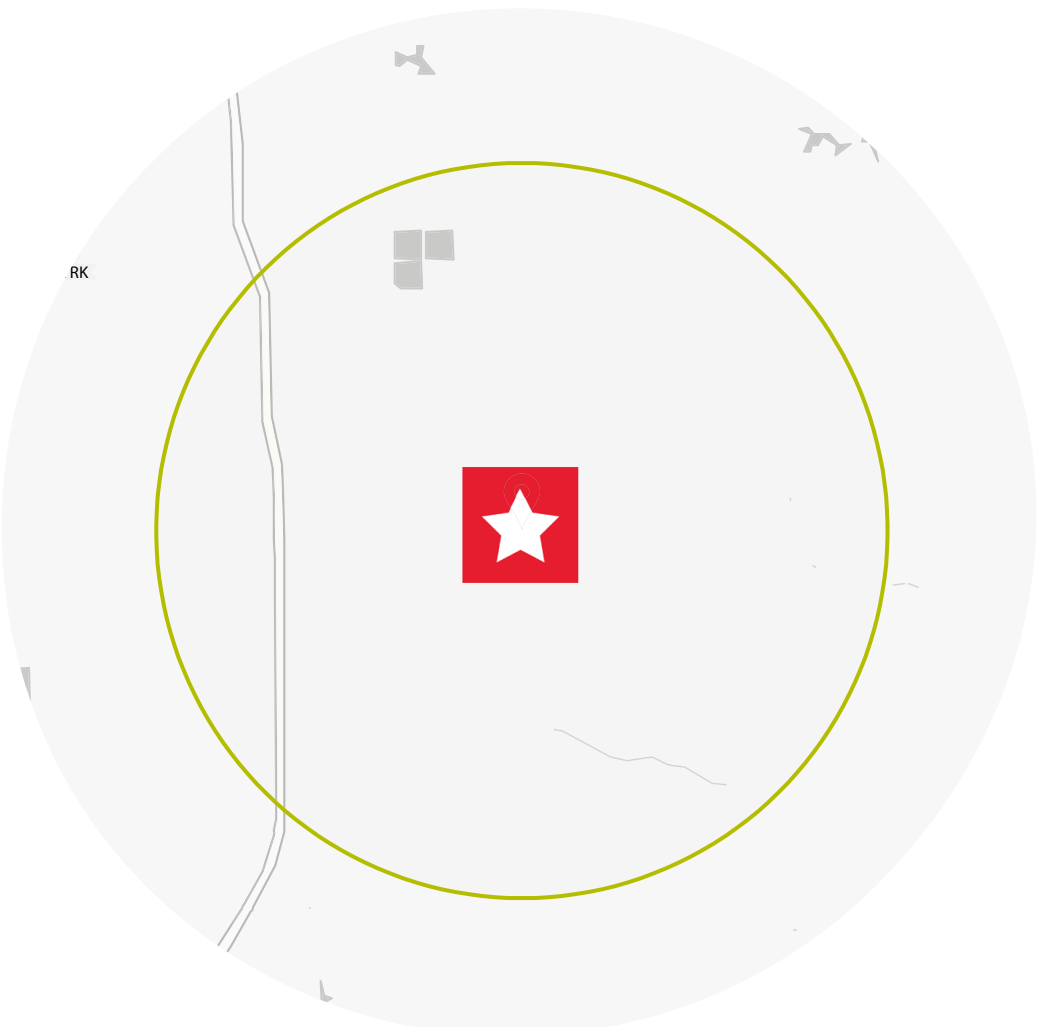
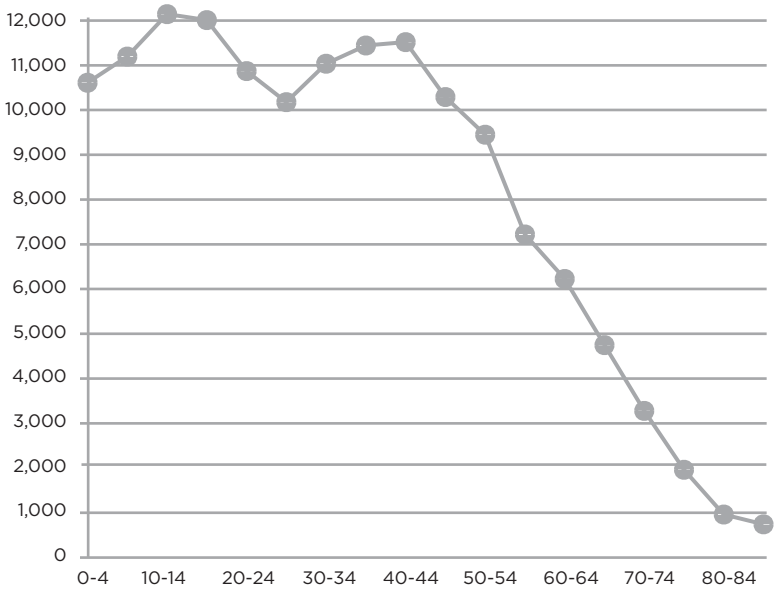
Graduate/ Professional Degree

POPULATION TIME SERIES 2010-2024



YEAR

POPULATION BY AGE GROUP



3 miles

Fry Road, South of FM 529

±2.8 acres
HOUSTON, TX



TRACT DETAILS

- ±2.8 acres of land with ±480' of frontage along Fry Rd.
- No Zoning/Contact Broker for Restrictions
- Utilities available from HC MUD 157
- On-site detention behind the existing multi-family
- Zoned to Cy-Fair ISD
- Contact Broker for Pricing

KRISTEN MCDADE
Managing Director
T: +1 713 331 1796
kristen.mcdade@cushwake.com

MATTHEW DAVIS
Senior Director
T: +1 713 331 1798
matthew.davis@cushwake.com

CHARLIE MCGAHREN
Associate
T: +1 713 331 1772
charlie.mcgauren@cushwake.com



©2024 Cushman & Wakefield. All rights reserved. The information contained in this communication is strictly confidential. This information has been obtained from sources believed to be reliable but has not been verified. NO WARRANTY OR REPRESENTATION, EXPRESS OR IMPLIED, IS MADE AS TO THE CONDITION OF THE PROPERTY (OR PROPERTIES) REFERENCED HEREIN OR AS TO THE ACCURACY OR COMPLETENESS OF THE INFORMATION CONTAINED HEREIN, AND SAME IS SUBMITTED SUBJECT TO ERRORS, OMISSIONS, CHANGE OF PRICE, RENTAL OR OTHER CONDITIONS, WITHDRAWAL WITHOUT NOTICE, AND TO ANY SPECIAL LISTING CONDITIONS IMPOSED BY THE PROPERTY OWNER(S). ANY PROJECTIONS, OPINIONS OR ESTIMATES ARE SUBJECT TO UNCERTAINTY AND DO NOT SIGNIFY CURRENT OR FUTURE PROPERTY PERFORMANCE.