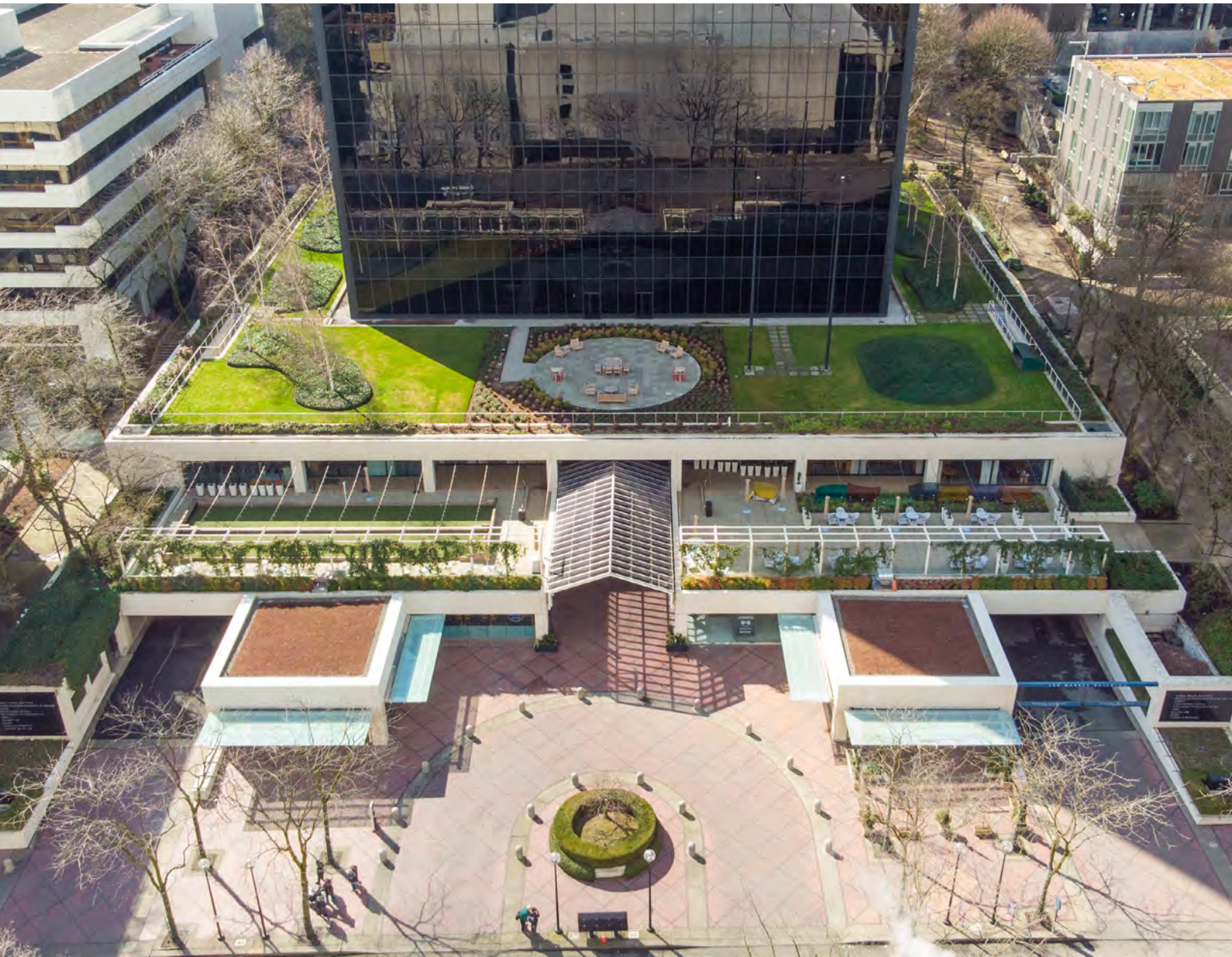


WELCOME TO
200
MARKET BUILDING




Welcome TO 200 MARKET

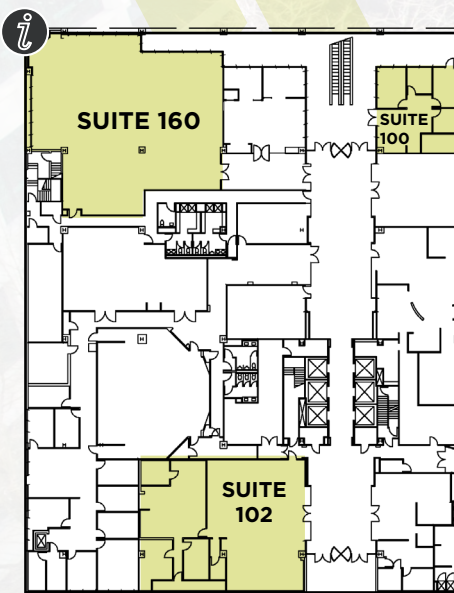
- 2/1000 parking and complimentary valet
- Spacious lobby level patio featuring two regulation sized bocce ball courts available for all tenants to use at no charge
- Caffé Umbria on site offering artisan coffee, food, wine and cocktails, with an exclusive outdoor seating area which is covered and heated
- Award-winning Murata Japanese restaurant on site
- Bike Barn offering tenants street-level access to secured, indoor bike parking and additional comforts that make riding to work simple
- Unobstructed river and mountain views from upper floors
- On-site fitness and locker rooms
- Excellent location within walking distance from numerous restaurants: Garden Bar, The Xport Lounge, Terrane Italian Kitchen, the Portland Exchange, Q and Starbucks
- Located in the *Fountain District*, a serene area of downtown featuring a concourse of parks with beautiful fountains and sculptures which are connected by paved, landscaped walking trails. 200 Market's "back yard" is Pettygrove Park.
- 4 blocks from the Waterfront Park; Keller Auditorium and Keller Fountain Park across the way
- Responsive, on-site building staff



Available FOR LEASE

 Click Floorplans to View Larger + More Details About Availabilities

 Click Icon Launch a Virtual Tour of the Availability



LOBBY LEVEL

SUITE 160 | 5,160 RSF

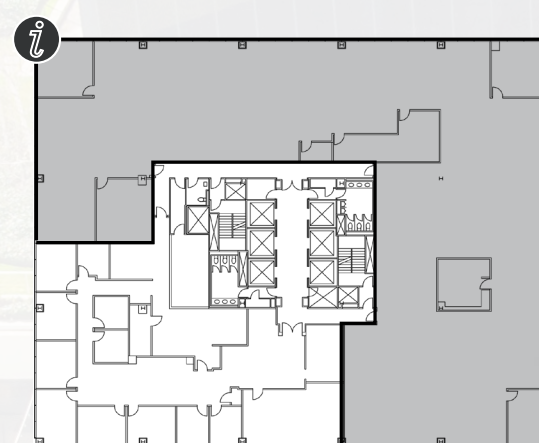
- Lobby exposure
- Private entrance
- Private patio access
- \$24.75 NNN

SUITE 102 | 3,810 RSF

- Lobby exposure
- Restaurant infrastructure
- \$24.75 NNN

SUITE 100 | 1,221 RSF

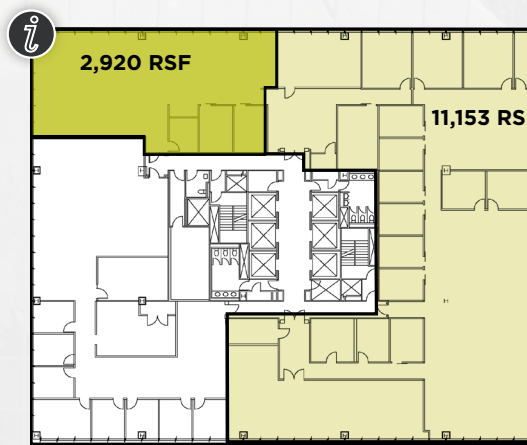
- Lobby exposure
- Adjacent to 49-person conference room
- **\$26.50 Full Service**



3RD FLOOR

SUITE 300 | 13,953 RSF

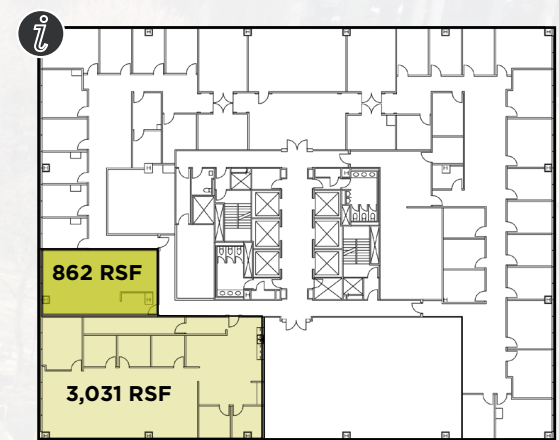
- \$34.75 FS
- Great urban green way views
- **Available Q1 2025**



7TH FLOOR

SUITE 700 | 2,920 - 14,073 RSF

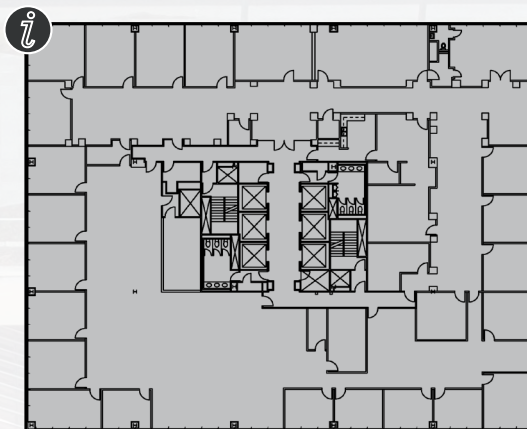
- \$35.75 FS
- Tech firm-friendly feel
- Divisible



9TH FLOOR

SUITE 975 | 862 - 3,893 RSF

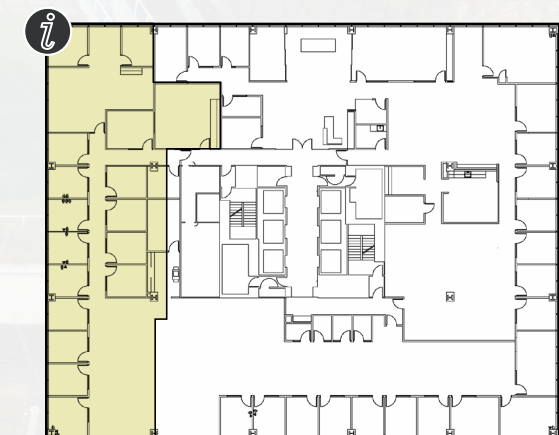
- \$36.25 FS
- Corner office space, move-in ready
- 6 private offices & conference room



12TH + 14TH FLOOR (CONTIGUOUS)

SUITE 1200 + 1400 | 38,614 RSF

- \$37.00 FS
- 2 cont. full floors, **available Q1 2025**
- 58 total private offices & 8 conference rooms



16TH FLOOR

SUITE 1650 | 5,500 RSF

- \$37.75 FS
- 16 Private Offices + Conference Room
- Test fit available - [Click Here](#)

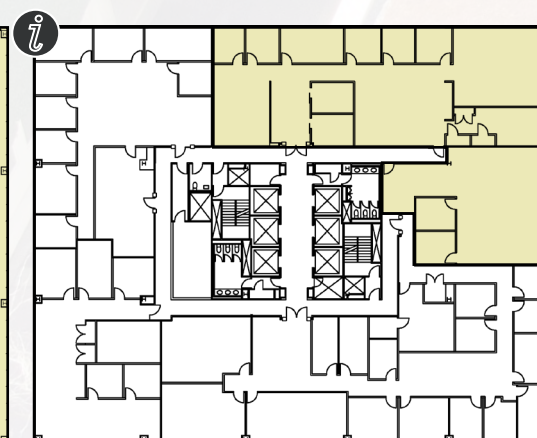


4TH FLOOR

SUITE 400 | 19,520 RSF

- \$35.00 FS
- Full floor

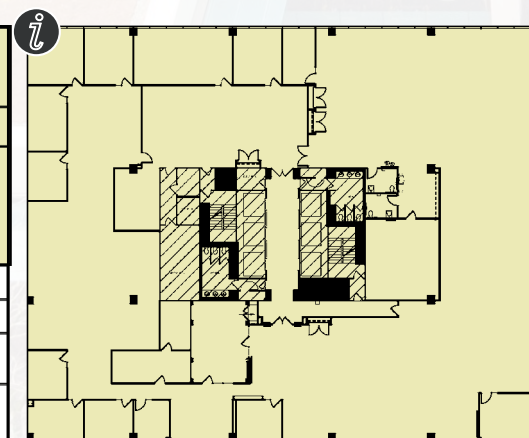
8



5TH FLOOR

SUITE 500 | 6,545 RSF

- \$35.25 FS
- Divisible to 1,949 SF
- Test fit available - [Click Here](#)



6TH FLOOR

SUITE 600 | 19,455 RSF

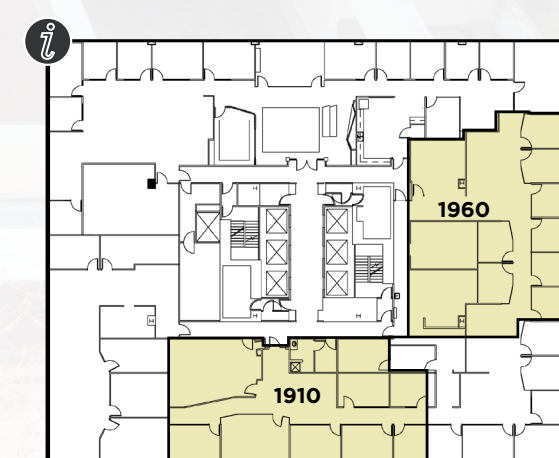
- \$35.50 FS
- Full floor
- Divisible to 6,000 RSF



17TH FLOOR

SUITE 1710 | 913 RSF

- \$38.00 FS
- Great views
- Ideal for executive suite



19TH FLOOR

SUITE 1910 + 1960 | ~3,400 RSF EACH

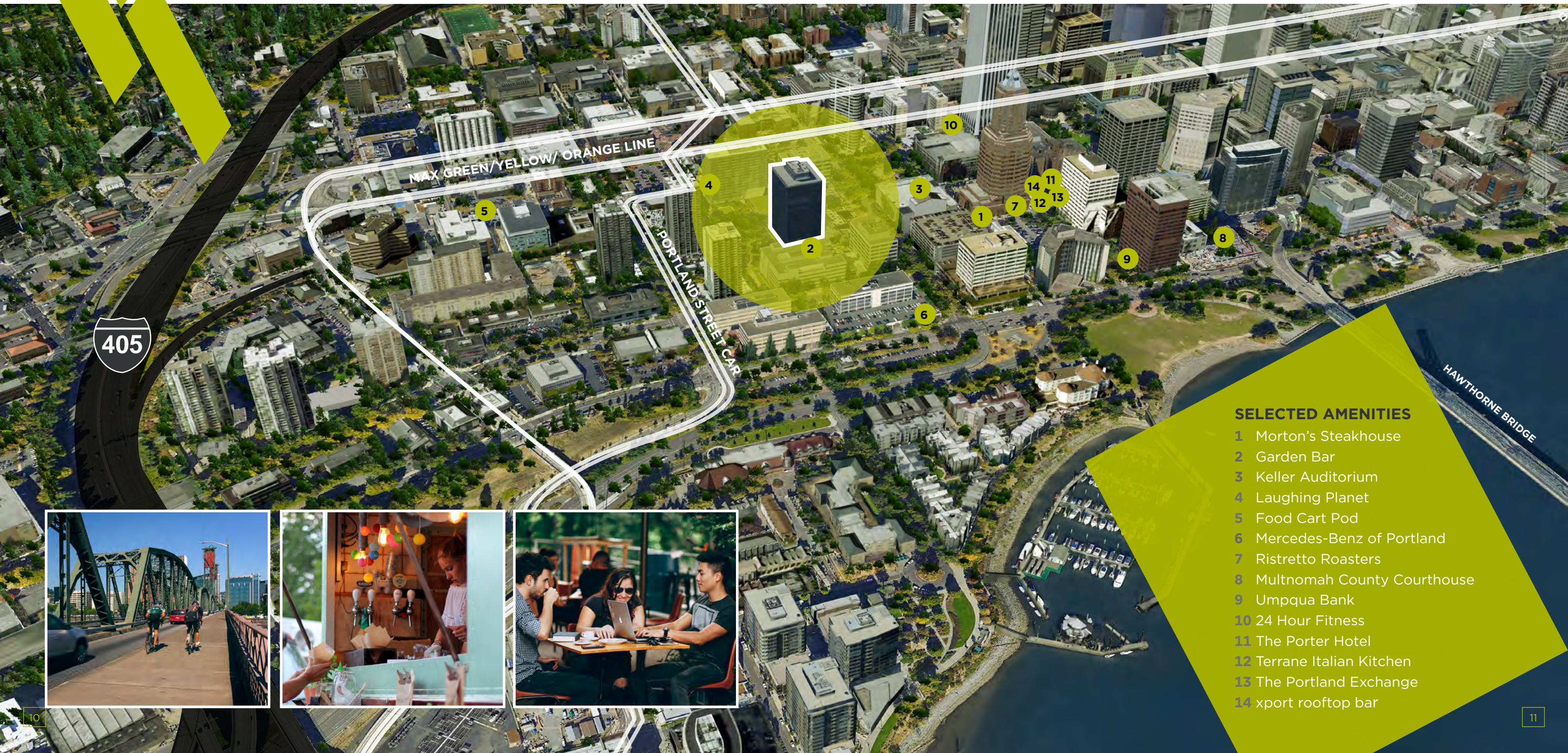
- \$38.50 FS
- Great views
- Test fits available - [Click Here](#)

9

Location

FOUNTAIN DISTRICT

IN THE HEART OF PORTLAND'S FOUNTAIN DISTRICT and right across the street from the Keller Fountain and Keller Auditorium, 200 Market is located in a peaceful yet amenity-rich and accessible area of downtown. Stroll through 200 Market's "back yard," Pettygrove Park, and you will find a hidden pedestrian trail that threads through SW 2nd and 3rd all the way to Lincoln Street. Along this trail you will encounter Lovejoy Fountain Park and a shortcut to the PSU food card pod on Third Street.



SELECTED AMENITIES

- 1 Morton's Steakhouse
- 2 Garden Bar
- 3 Keller Auditorium
- 4 Laughing Planet
- 5 Food Cart Pod
- 6 Mercedes-Benz of Portland
- 7 Ristretto Roasters
- 8 Multnomah County Courthouse
- 9 Umpqua Bank
- 10 24 Hour Fitness
- 11 The Porter Hotel
- 12 Terrane Italian Kitchen
- 13 The Portland Exchange
- 14 xport rooftop bar



200

MARKET BUILDING

FOR LEASING CONTACT:

TOM USHER
Executive Managing Director
503 279 1777
tom.usher@cushwake.com

MARK CARNESE
Executive Managing Director
503 279 1764
mark.carnese@cushwake.com

The brokers are licensed in Oregon

200 SW Market Street
Suite 200
Portland, OR 97201
Main +1 503 279 1700

cushmanwakefield.com



**CUSHMAN &
WAKEFIELD**

©August 14, 2024 9:17 AM Cushman & Wakefield. All rights reserved. The information contained in this communication is strictly confidential. This information has been obtained from sources believed to be reliable but has not been verified. No warranty or representation, express or implied, is made as to the condition of the property (or properties) referenced herein or as to the accuracy or completeness of the information contained herein, and same is submitted subject to errors, omissions, change of price, rental or other conditions, withdrawal without notice, and to any special listing conditions imposed by the property owner(s). Any projections, opinions or estimates are subject to uncertainty and do not signify current or future property performance.