



**CUSHMAN &  
WAKEFIELD**

FOR LEASE

**30470 Whipple Road**

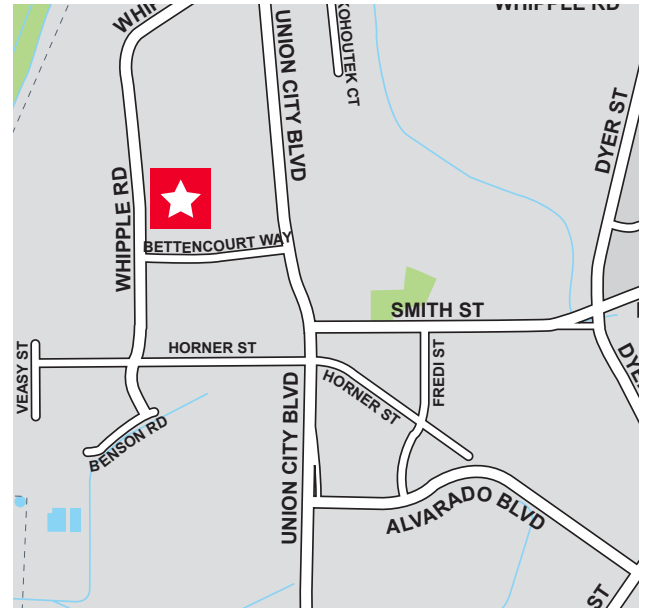
**Alvarado Business Park | Union City, California**



### Property Highlights

- ±27,187 SF of Warehouse Space
- ±1,452 SF of Office Space
- 24' Minimum Clear Height
- 5 Dock Doors / 2 Drive-in Doors
- 24' x 60' column spacing
- End Unit
- High image business park
- Close proximity to I-880
- Available 2/1/2025
- Touring and lease rate call broker

**ALVARADO BUSINESS PARK** is a 10 building 1.2 million square foot business park with close access to I-880 and HWY 92 offering solutions for today and expansion for future growth.



**Jeff Starkovich, SIOR**  
Executive Managing Director  
+1 510 409 1111  
jeff.starkovich@cushwake.com  
LIC #00644571 | cushmanwakefield.com



**CUSHMAN &  
WAKEFIELD**

**Mark Maguire, SIOR**  
Executive Vice President  
+1 510 219 7854  
mark.maguire@colliers.com  
LIC #01190597 | www.colliers.com



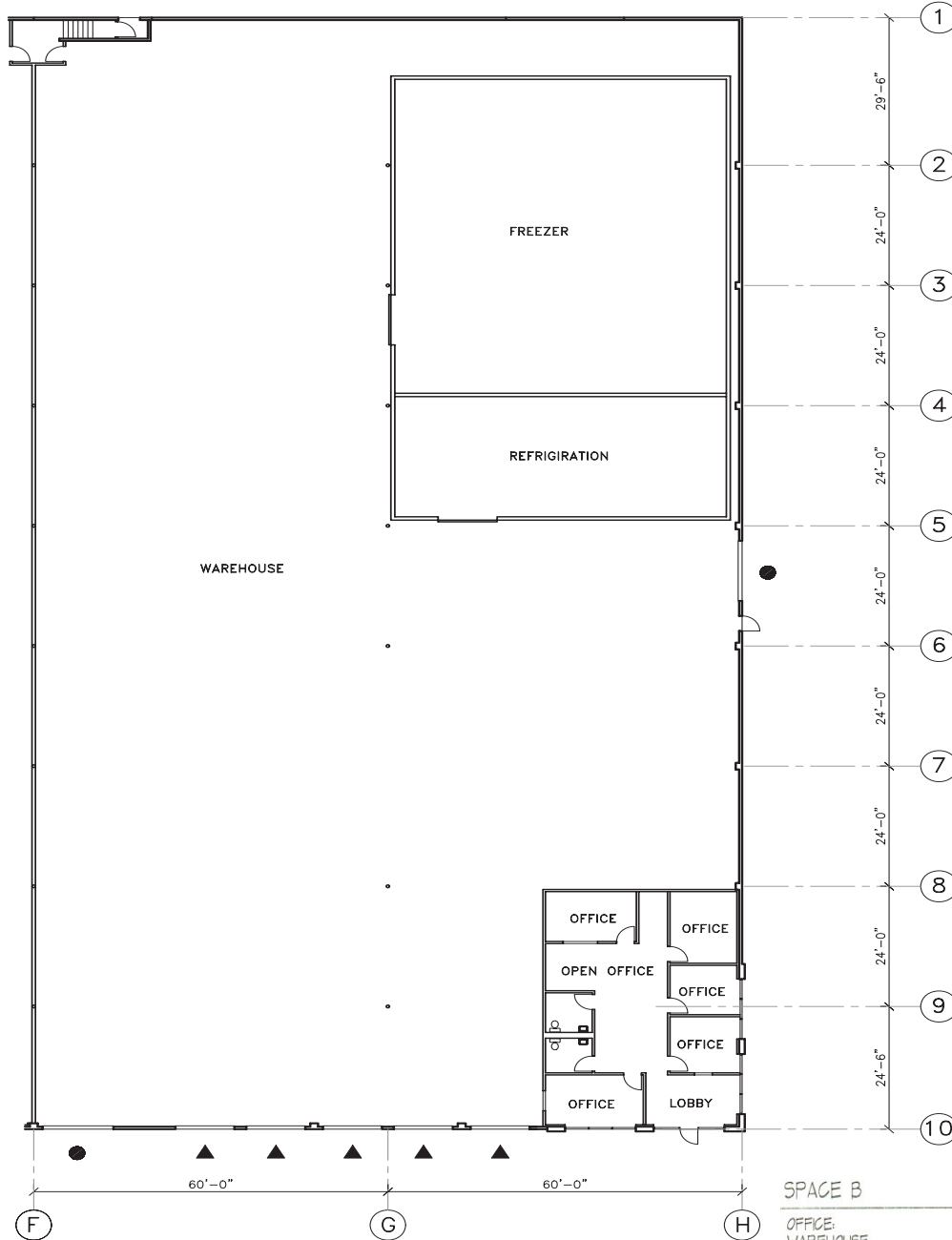


**CUSHMAN &  
WAKEFIELD**

FOR LEASE

**30470 Whipple Road**

**Alvarado Business Park | Union City, California**



SPACE B

OFFICE:	1,452 S.F.
WAREHOUSE:	25,636 S.F.
ELECT. RM. RATIO:	99 S.F.
TOTAL:	27,187 S.F.



**Jeff Starkovich, SIOR**  
Executive Managing Director  
+1 510 409 1111  
jeff.starkovich@cushwake.com  
LIC #00644571 | cushmanwakefield.com



**Mark Maguire, SIOR**  
Executive Vice President  
+1 510 219 7854  
mark.maguire@colliers.com  
LIC #01190597 | www.colliers.com

