



**CUSHMAN &
WAKEFIELD**

955 Monroe Street
Santa Clara, CA



OFFICE/RETAIL FOR LEASE ±7,039 SF

PROPERTY HIGHLIGHTS:

- High Identity Space
- Travertine Marble Wall & 28' Ceiling Height
- Terrazzo Flooring
- Excellent Natural Light
- Located in Franklin Square
- Close to Numerous Restaurants, Shops and Services
- Walking Distance to CalTrain
- Available Now!



Erik Hallgrimson

+1 408 615 3435

erik.hallgrimson@cushwake.com

LIC #01274540

Clark Steele

+1 408 436 3653

clark.steele@cushwake.com

LIC #01995379

Dolores Estrada

+1 408 436 3640

dolores.estrada@cushwake.com

LIC #02083800

300 Santana Row, Fifth Floor

San Jose, CA 95128

main +1 408 615 3400

cushmanwakefield.com



**CUSHMAN &
WAKEFIELD**

955 Monroe Street
Santa Clara, CA

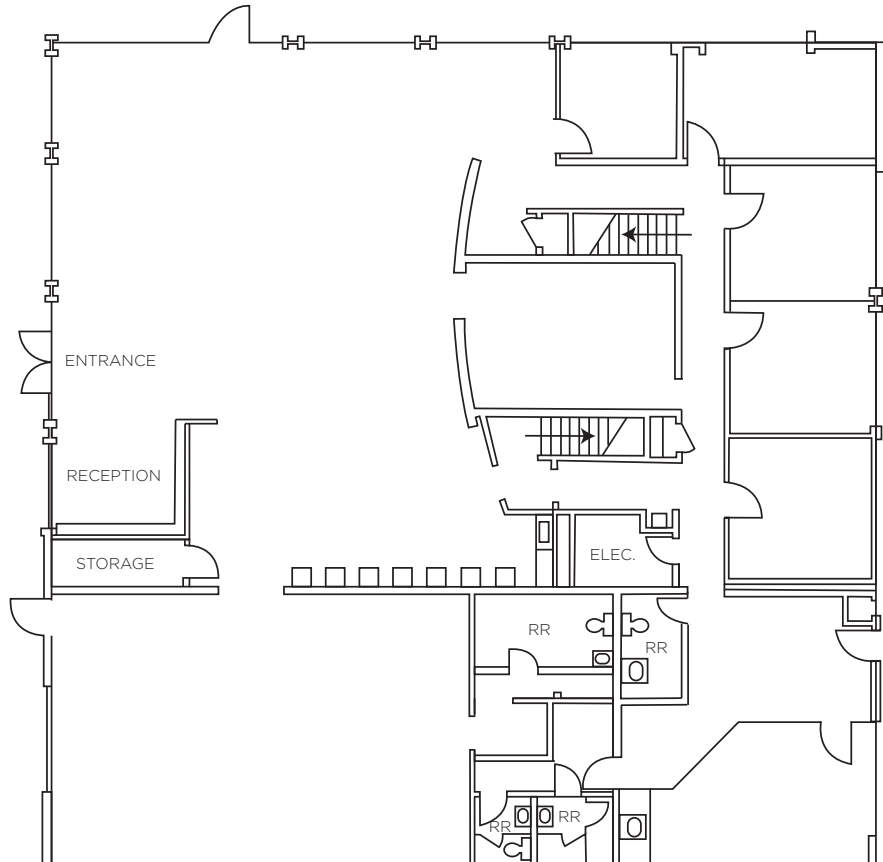




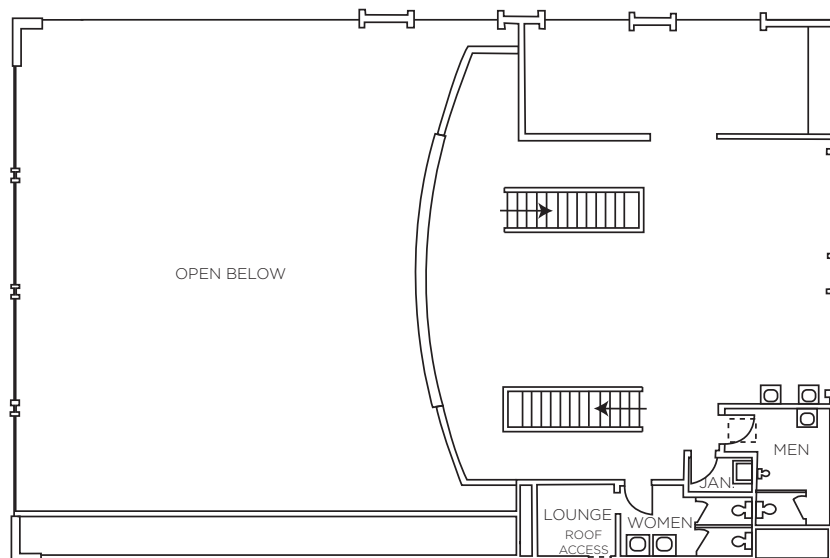
**CUSHMAN &
WAKEFIELD**

955 Monroe Street
Santa Clara, CA

FLOOR PLAN



FIRST FLOOR



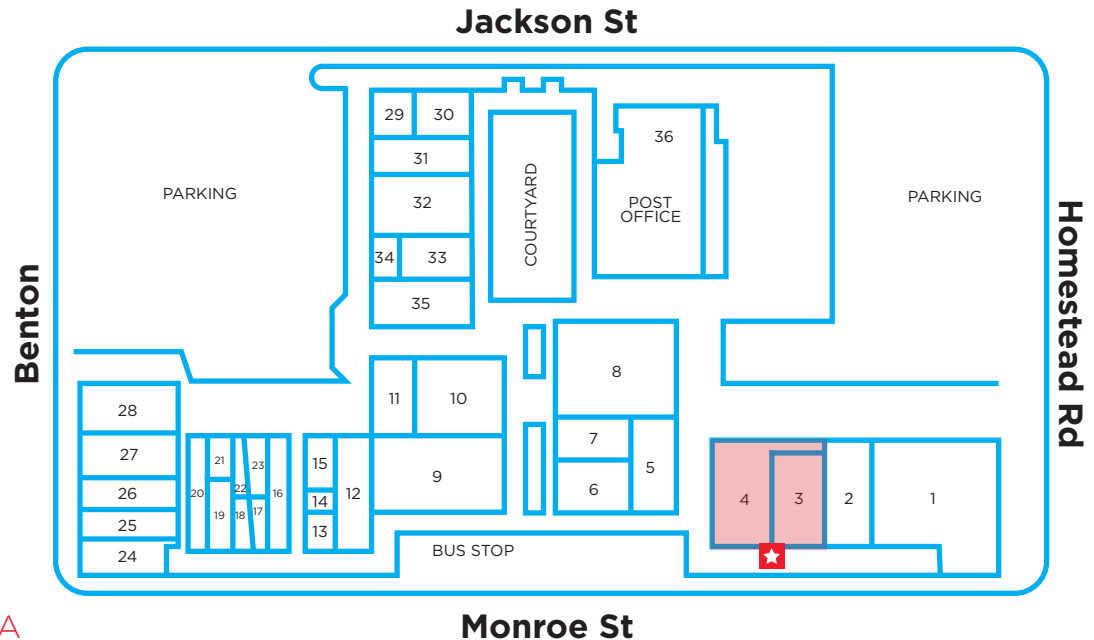
SECOND FLOOR



CUSHMAN &
WAKEFIELD

955 Monroe Street
Santa Clara, CA

SITE PLAN



FRANKLIN PLAZA

Monroe St



1/2	JUSTIN'S
3/4	AVAILABLE FOR LEASE
5	SAM & ROY'S BARBER SHOP
6	MOUNTAIN MIKE'S PIZZA
7	FRANKLIN CLEANERS
8	ILLUSIVE COMICS & GAMES
9	SANTA CLARA LIQUORS
10	HATCHO JAPANESE RESTAURANT & SUSHI
11	STAMPCRAFT
12	BLINKY'S CAN'T SAY LOUNGE
13	BIG JIM'S BARBER SHOP
14	FOUR SEASONS BANH MI
15	FOUR SEASON'S PHO
19	MIO VICINO - BANQUET ROOM
20	VITARELLI CLOTHIER & TAILORING
21/22	TICK TOCK SHOP
23	HUNNY HAIR & NAIL SPA
24	MIO VICINO
25	MISSION CHIROPRACTIC - DR. ARNONE DC
25A	DR BOURGET DC, CCSP
26	HUNNY HAIR & NAIL SPA 2
27	DeKEYREL CHIROPRACTIC
28	SHINE DRY CLEANING & ALTERATIONS
29	GILLMOR & ASSOCIATES - REAL ESTATE
30/31	JASMINE FINE THAI CUISINE
32	THE UPS STORE
33	SCOATIA SALON
34	CHARMING NAIL SALON
35	Da SILVA'S BRONCO'S PUB
36	UNITED STATES POSTAL SERVICE



CUSHMAN &
WAKEFIELD

955 Monroe Street
Santa Clara, CA

AMENITIES MAP



Erik Hallgrimson

+1 408 615 3435

erik.hallgrimson@cushwake.com

LIC #01274540

Clark Steele

+1 408 436 3653

clark.steele@cushwake.com

LIC #01995379

Dolores Estrada

+1 408 436 3640

dolores.estrada@cushwake.com

LIC #02083800

300 Santana Row, Fifth Floor

San Jose, CA 95128

main +1 408 615 3400

cushmanwakefield.com