

80-90 TIVERTON COURT

Markham, Ontario

 CUSHMAN &
WAKEFIELD



AVAILABLE
SPACE

80 Tiverton Court

100 - 4,453 SF

101 - 6,013 SF

~~200 - LEASED~~

205 - 3,605 SF

601 - 5,521 SF

701 - 7,893 SF

~~702 - LEASED~~

703 - 3,250 SF

~~803A - LEASED~~

Newly Renovated
Lobby

Fitness Centre with
Squash Court

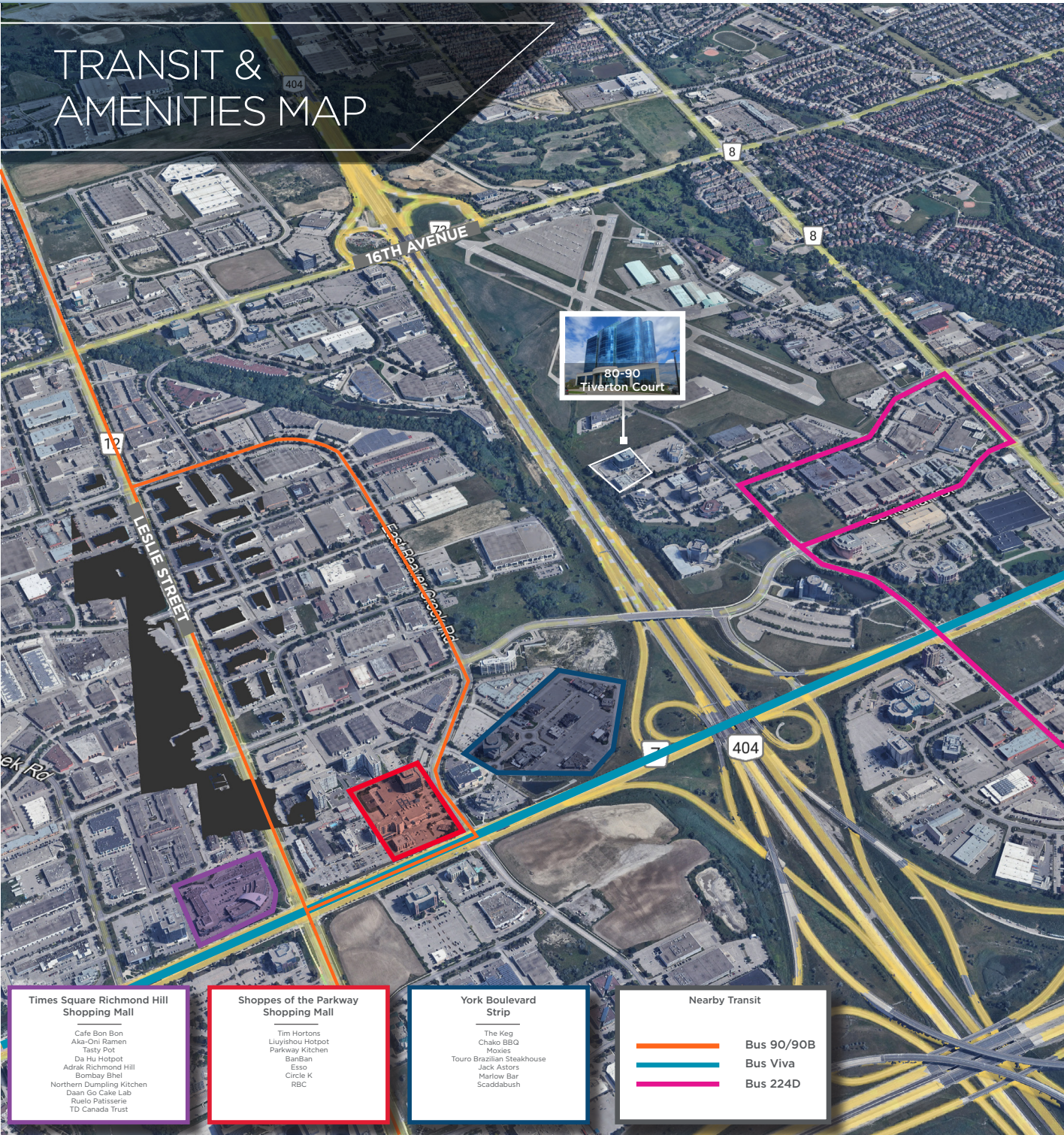
90 Tiverton Court

~~Unit 100 - LEASED~~

Asking Rent: \$16.00

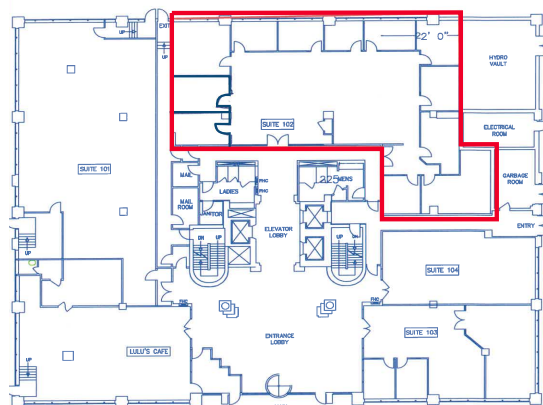
Additional Rent: \$12.75

Parking 4:1,000 SF
Underground Parking Available

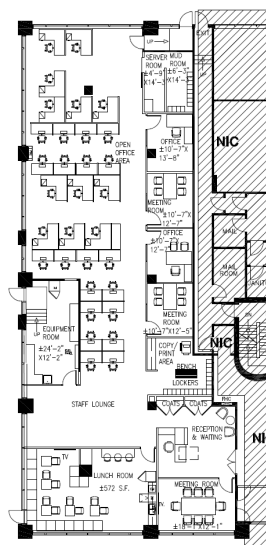




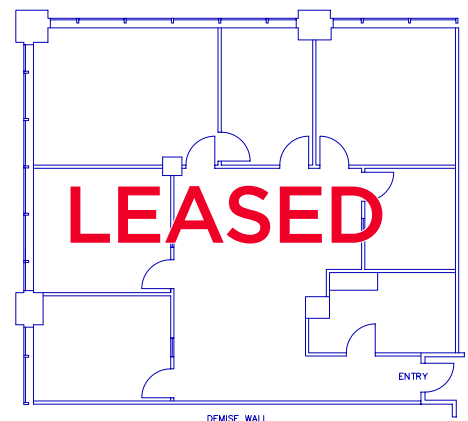
Suite 100: 4,453 SF



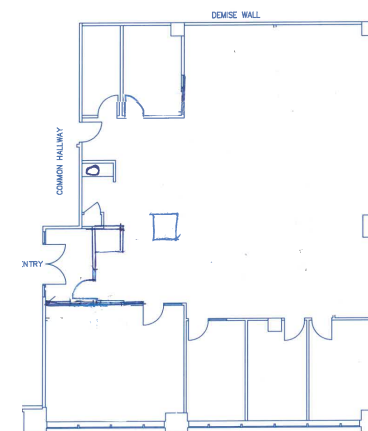
Suite 101: 6,013 SF



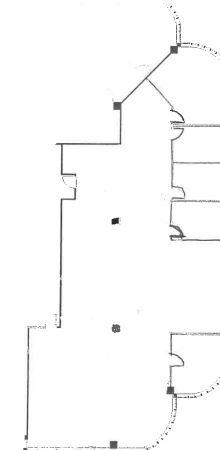
Suite 200: 2,243 SF



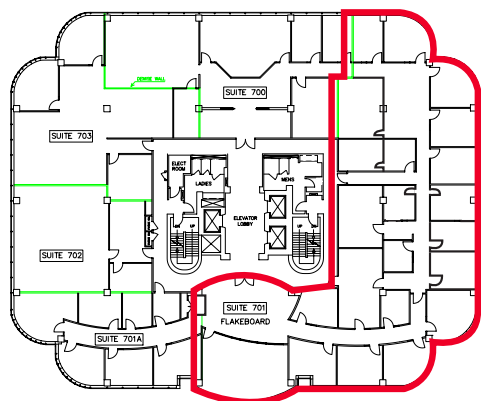
Suite 205: 3,605 SF



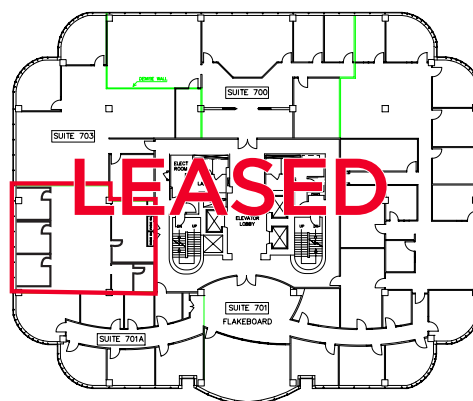
Suite 601: 5,521 SF



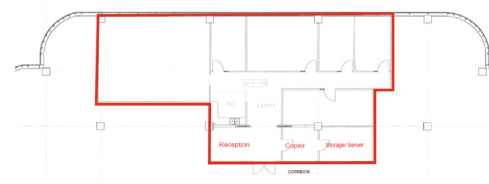
Suite 701: 7,893 SF



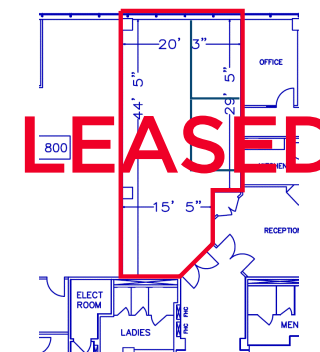
Suite 702: 1,802 SF



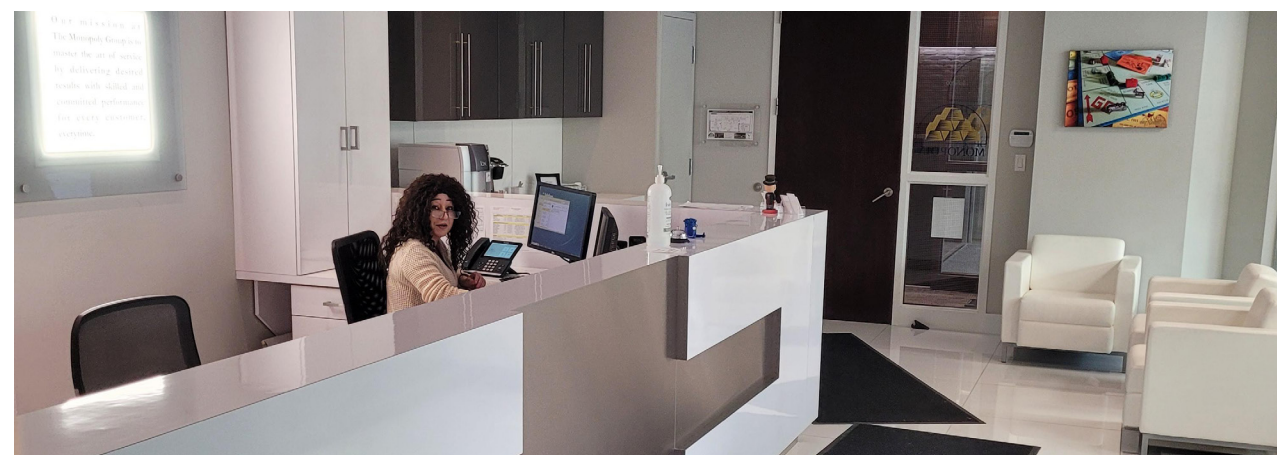
Suite 703: 3,250 SF



Suite 803A: 1,069 SF



Suite 100: 5,624 SF



80-90 Tiverton Court

Markham, Ontario



For more information please contact:

DAVID STEVENS*

Vice President

D: 416-756-5420

M: 647-210-3106

David.Stevens@cushwake.com

ZARKO STOJANOVIC*

Vice President

D: 416-756-5440

M: 416-219-0716

Zarko.Stojanovic@cushwake.com

CUSHMAN & WAKEFIELD ULC, BROKERAGE

1500 Don Mills Road, Suite #401

Toronto, Ontario

M3B3K4

©2025 Cushman & Wakefield ULC, Brokerage. All rights reserved. The information contained in this communication is strictly confidential. This information has been obtained from sources believed to be reliable but has not been verified. NO WARRANTY OR REPRESENTATION, EXPRESS OR IMPLIED, IS MADE AS TO THE CONDITION OF THE PROPERTY (OR PROPERTIES) REFERENCED HEREIN OR AS TO THE ACCURACY OR COMPLETENESS OF THE INFORMATION CONTAINED HEREIN, AND SAME IS SUBMITTED SUBJECT TO ERRORS, OMISSIONS, CHANGE OF PRICE, RENTAL OR OTHER CONDITIONS, WITHDRAWAL WITHOUT NOTICE, AND TO ANY SPECIAL LISTING CONDITIONS IMPOSED BY THE PROPERTY OWNER(S). ANY PROJECTIONS, OPINIONS OR ESTIMATES ARE SUBJECT TO UNCERTAINTY AND DO NOT SIGNIFY CURRENT OR FUTURE PROPERTY PERFORMANCE. *Sales Representative **Broker