



FranklinStreet



Site
 ± 1.18 AC

S Hartmann Dr.

Leeville Pike

1929 LEEVILLE PIKE

Lebanon, TN 37090

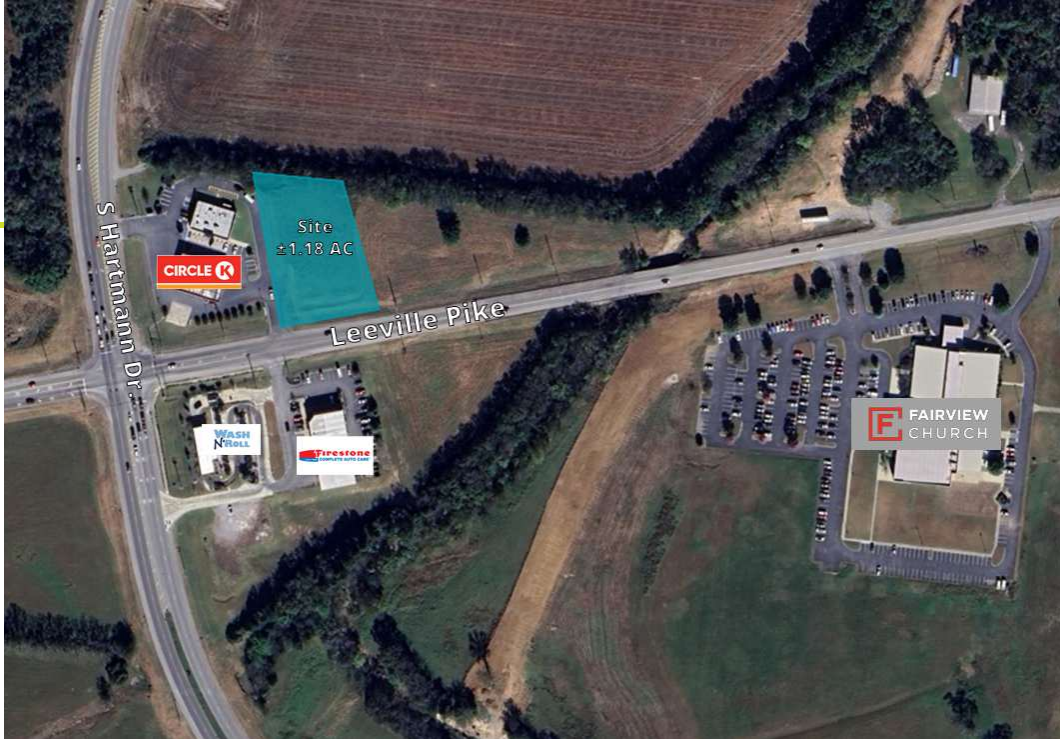
PROPERTY DETAILS

Property Description

Franklin Street partnered with Cushman & Wakefield U.S. is pleased to present qualified investors the opportunity to acquire the enclosed site in Lebanon, TN. The site is positioned at/near the intersection of Leeville Pike and South Hartmann Drive, providing direct access to major regional thoroughfares that allow for convenient connectivity to the entire Lebanon MSA.

INVESTMENT DETAIL

Address	1929 Leeville Pike, Lebanon, TN 37090
Price	\$750,000
Size	±1.18 AC
Parcel ID	068 024.00
Zoning	B-3 General Business
County	Wilson
Traffic Count	6,620 VPD

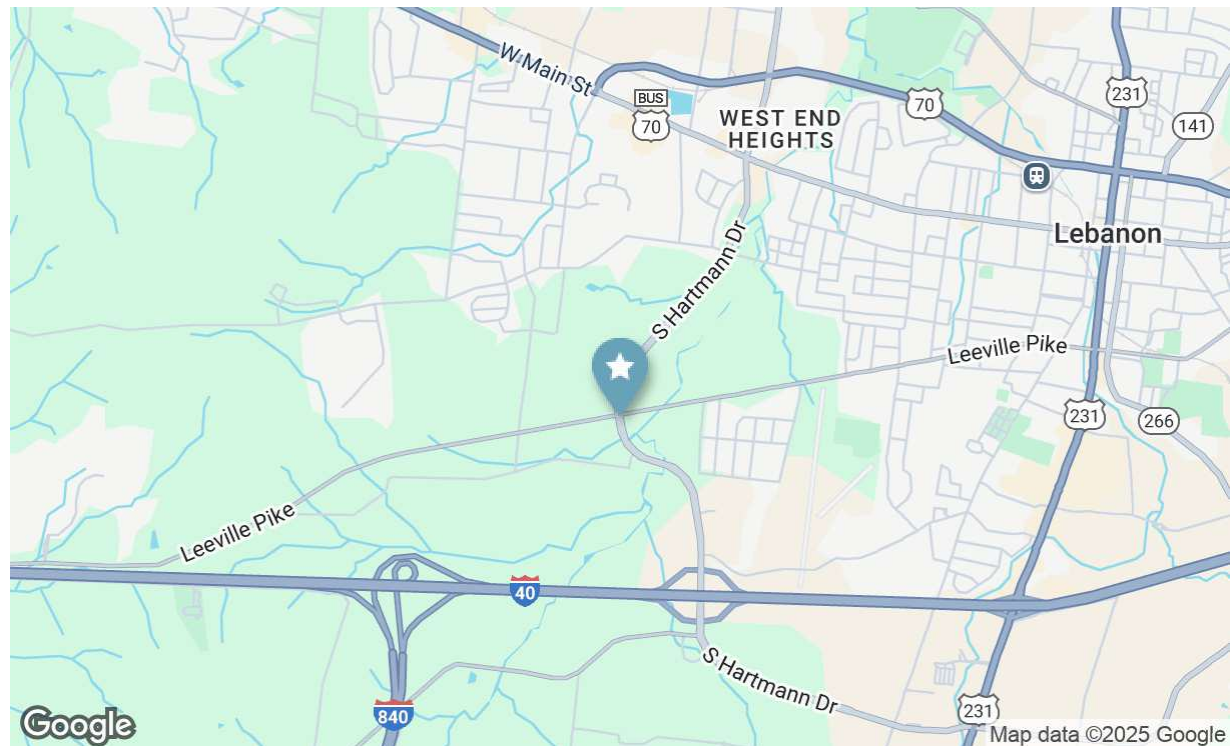


LOCATION OVERVIEW

ABOUT LEBANON

Lebanon, Tennessee, the county seat of Wilson County, is a fast-growing city with a 2025 population of 54,259—up nearly 40% since 2020. Just east of Nashville, Lebanon blends historic charm with modern amenities, offering a median household income of \$71,320 and a median home value of \$410,495. The median age is 35.7, making it a youthful, family-friendly community.

Lebanon is known for its lively downtown, annual events like the Wilson County Fair (the largest in Tennessee), and outdoor recreation at Don Fox Community Park and Cedars of Lebanon State Park. With vibrant festivals, historic districts, and easy access to Nashville, Lebanon stands out as a welcoming and dynamic place to live.



1929 LEEVILLE PIKE

Lebanon, TN 37090

Presented By:

MARSHALL DURRETT (LEAD)

Managing Director

TX #464407

737.279.9850

marshall.durrett@franklinst.com

LAURA FRETWELL

Senior Associate

TX #754469

737.932.8279

laura.fretwell@franklinst.com

DARRON KATTAN

Managing Director, Broker Of Record

TN #368811

813.658.3355

darron.kattan@franklinst.com

Franklin Street Real Estate Services, LLC | A
Licensed Tennessee Broker #265768

In Partnership with:



JEFF SCHEIDEGGER

Account Manager

314.384.8662

jeff.scheidegger@cushwake.com



 FranklinStreet