



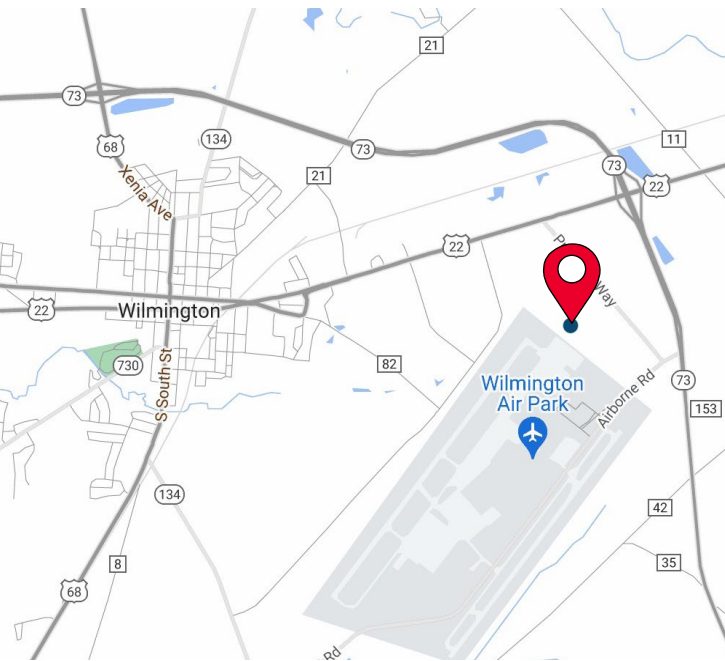
FOR LEASE

3188 PROGRESS WAY

WILMINGTON, OH 45177

32,000 SF - 121,600 SF AVAILABLE

FOR LEASE:
ENTIRE BLDG: \$4.95/PSF NNN
32,000 - 79,600 SF: \$5.45/PSF NNN



PROPERTY HIGHLIGHTS

- 121,600 SF
- 5,100 SF Office
- (16) 9'x10' Docks
- (2) 12'x14' Drive-in Doors
- 22'-25' Clear
- Wet System
- Located in the Wilmington Industrial Park at the Wilmington Air Park.
- Units range from 32,000 SF - 121,600 SF

For more information, contact:

Tom McCormick, SIOR, CCIM
Managing Director
+1 513 763 3025
tom.mccormick@cushwake.com

Ben McNab
Managing Director
+1 513 763 3019
ben.mcnab@cushwake.com

201 E. Fourth Street, Suite 1800
Cincinnati, OH 45202
P: +1 513 421 4884
cushmanwakefield.com

FOR LEASE

3188 PROGRESS WAY

WILIMINGTON, OH 45177

BUILDING SPECIFICATIONS

ENTIRE BUILDING \$4.95/PSF NNN
32,000 SF - 79,600 SF: \$5.45/PSF NNN

LOCATION	Wilmington, OH	SPRINKLERS	Wet System
BUILDING SIZE	121,600 SF (760' x 160')	DOCK DOORS	(16) 9'x10' Docks w/ levelers
OFFICE SIZE	5,100 SF	DRIVE-IN DOORS	(2) 12'x14' Drive-in Doors
WAREHOUSE SIZE	116,500 SF	ELECTRIC	480/277 volt, 2000 amps, 3 Phase
CONSTRUCTION	Tilt-up concrete	HVAC	(2) 10-ton roof top package units
CLEAR HEIGHT	22' - 25'	ELECTRIC GAS	www.aes-ohio.com www.centerpointenergy.com
FLOORS	6" Concrete	WATER/SEWER	www.wilmingtonoh.org
ROOF	Ballasted EPDM (Original)	TELEPHONE	www.go.frontier.com
LIGHTING	Metal Halide & LED	DATA	www.go.frontier.com
		OPEX	\$1.50/PSF OPEX

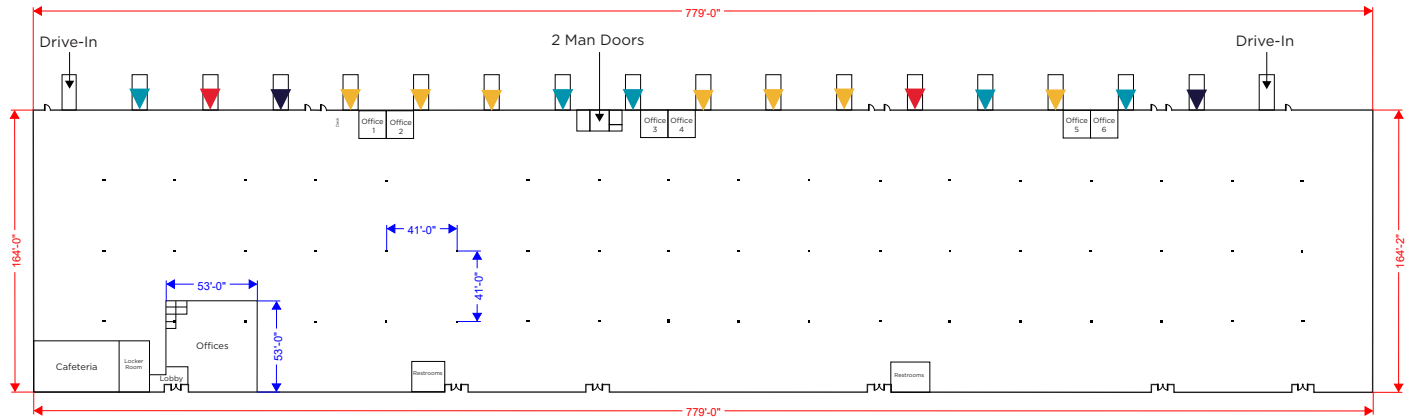


FOR LEASE

3188 PROGRESS WAY

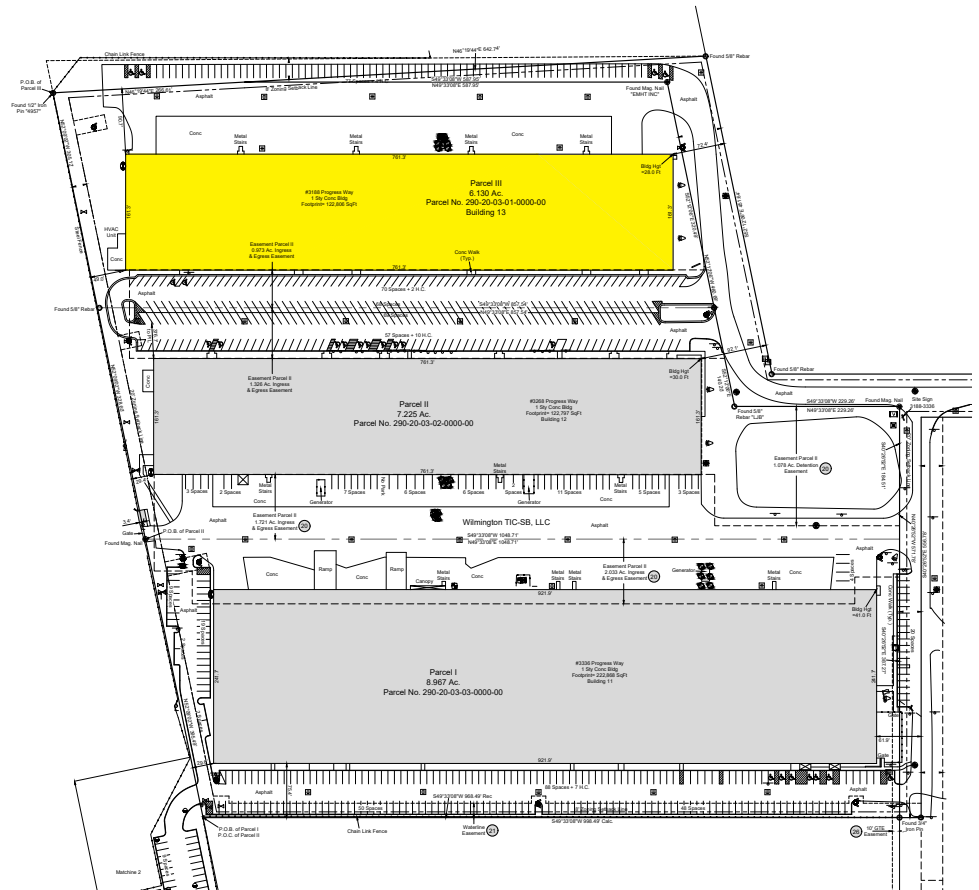
WILIMINGTON, OH 45177

FLOOR PLAN



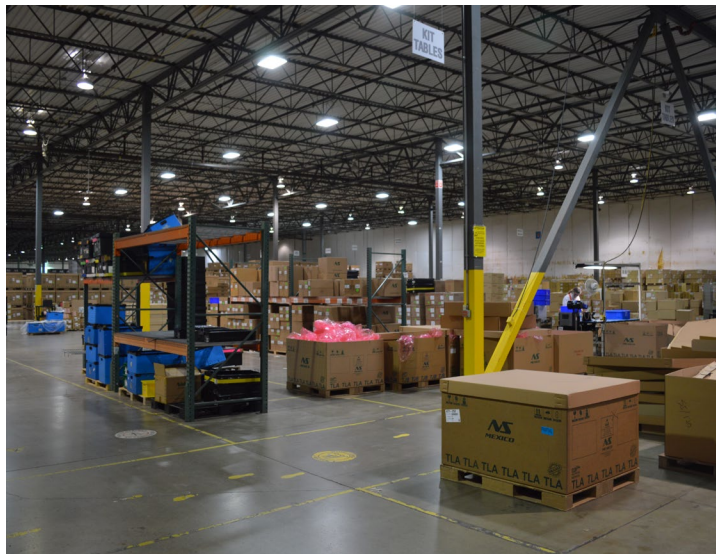
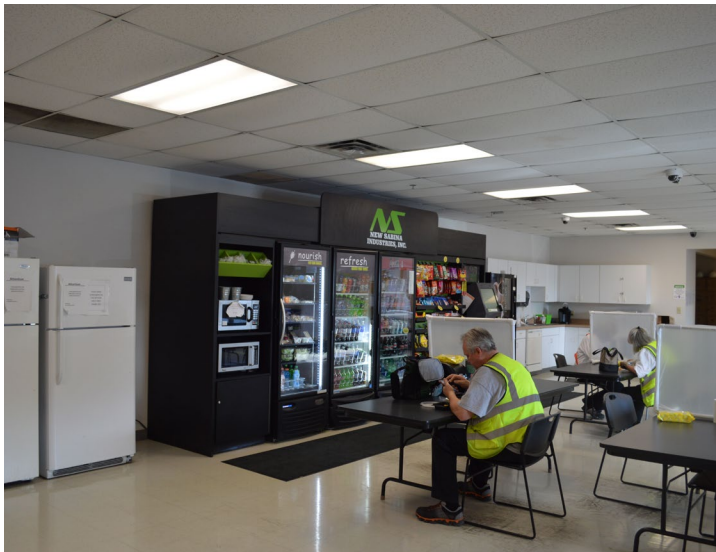
KEY PLAN

- ▼ Dock with Leveler
- ▼ Dock with Leveler & Seal
- ▼ Dock with Leveler & Lock
- ▼ Dock with Leveler, Seal & Lock



FOR LEASE
3188 PROGRESS WAY
WILIMINGTON, OH 45177

BUILDING PHOTOS



FOR LEASE

3188 PROGRESS WAY

WILIMINGTON, OH 45177

AERIAL IMAGES



For more information, contact:

Tom McCormick, SIOR, CCIM
Managing Director
+1 513 763 3025
tom.mccormick@cushwake.com

Ben McNab
Managing Director
+1 513 763 3019
ben.mcnab@cushwake.com

201 E. Fourth Street, Suite 1800
Cincinnati, OH 45202
P: +1 513 421 4884
cushmanwakefield.com

©2022 Cushman & Wakefield. All rights reserved. The information contained in this communication is strictly confidential. This information has been obtained from sources believed to be reliable but has not been verified. NO WARRANTY OR REPRESENTATION, EXPRESS OR IMPLIED, IS MADE AS TO THE CONDITION OF THE PROPERTY (OR PROPERTIES) REFERENCED HEREIN OR AS TO THE ACCURACY OR COMPLETENESS OF THE INFORMATION CONTAINED HEREIN, AND SAME IS SUBMITTED SUBJECT TO ERRORS, OMISSIONS, CHANGE OF PRICE, RENTAL OR OTHER CONDITIONS, WITHDRAWAL WITHOUT NOTICE, AND TO ANY SPECIAL LISTING CONDITIONS IMPOSED BY THE PROPERTY OWNER(S). ANY PROJECTIONS, OPINIONS OR ESTIMATES ARE SUBJECT TO UNCERTAINTY AND DO NOT SIGNIFY CURRENT OR FUTURE PROPERTY PERFORMANCE.