



# RIVER QUARRY

408 E PARKCENTER BLVD | BOISE, IDAHO

8,286 RSF FOR SUBLEASE



CUSHMAN &  
WAKEFIELD



# Property Highlights

Sublease Rate	\$24.00
Sublease Type	FSEJ
Sublease Term	7/31/29
Available Space	8,286 RSF - 3rd Floor
Furnished	Furniture Shown Included
Building Size	65,742 SF
Lot Size	3.76 Acres
Parking	On-Site Parking - Open/Shared
Zoning	City of Boise - L-OD
Parcel	#R6907070023
Lockbox	No Lockbox - Contact Agents

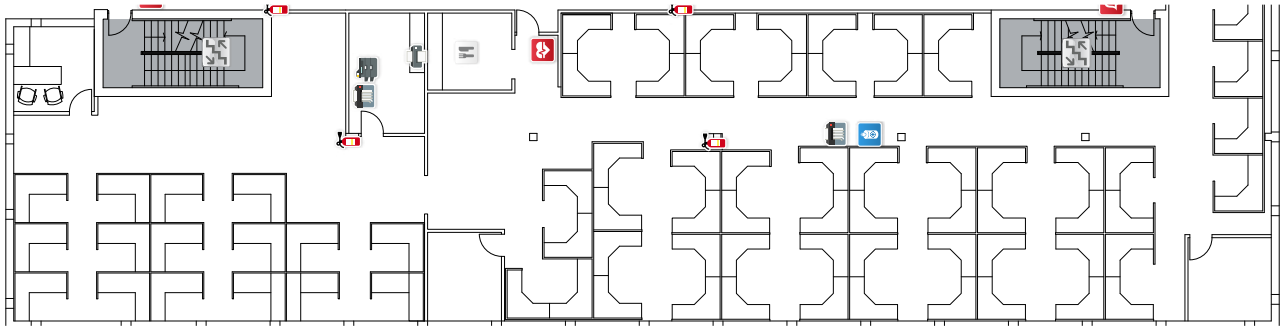
# Listing Features

- Available space includes furniture shown, reception area, private offices, conference room, breakroom, and common area entry, restrooms and shared on-site parking for clients and staff
- Part of a nicely developed professional office park with quality landscaping and design, ideal location for a tenant looking to service Boise and it's surrounding areas - [Google 360 View](#)
- Near downtown Boise, SUPERVALU/Albertson's Corporate Office, BSU, numerous banks, restaurants including Red Robin and Barbacoa, DoubleTree and many other amenities
- Tenants can relax and enjoy the Loggers Pond & Boise Greenbelt on lunch hours, accessible by bike & Valley Regional Transit public bus system



# Floor Plan

3rd Floor - 8,286 RSF



Jennifer McEntee

Senior Director  
Office | Capital Markets  
+1 208 287 9495  
jennifer.mcentee@cushwake.com

Bree Wells

Director  
Office | Capital Markets  
+1 208 287 9492  
bree.wells@cushwake.com

Braydon Torres

Associate  
Office | Capital Markets  
+1 208 207 9485  
braydon.torres@cushwake.com





## Third Floor - Images



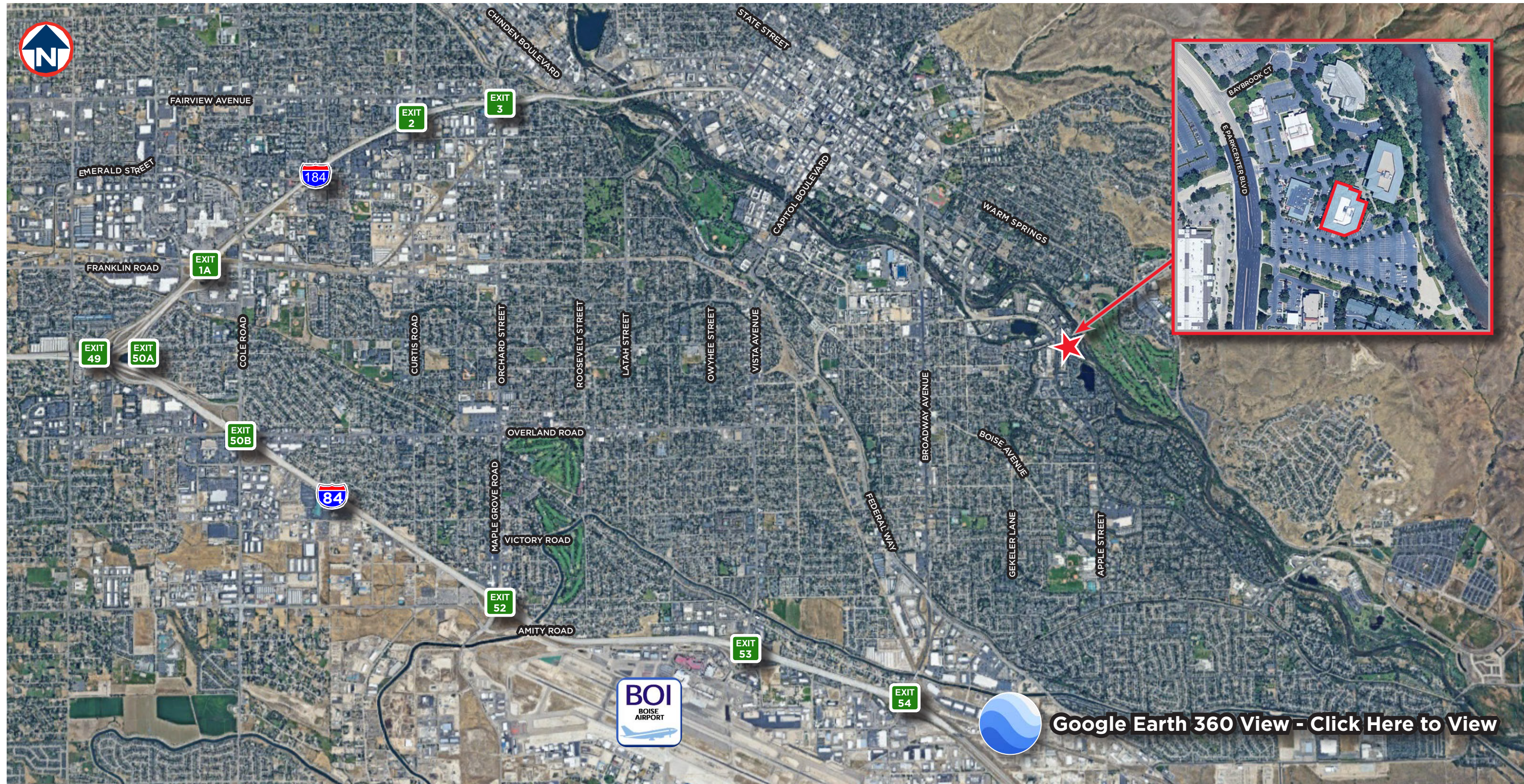
**Jennifer McEntee**  
Senior Director  
Office | Capital Markets  
+1 208 287 9495  
jennifer.mcentee@cushwake.com

**Bree Wells**  
Director  
Office | Capital Markets  
+1 208 287 9492  
bree.wells@cushwake.com

**Braydon Torres**  
Associate  
Office | Capital Markets  
+1 208 207 9485  
braydon.torres@cushwake.com



Property Location



**Jennifer McEntee**  
Senior Director  
Office | Capital Markets  
+1 208 287 9495  
jennifer.mcentee@cushwake.com

**Bree Wells**  
Director  
Office | Capital Markets  
+1 208 287 9492  
bree.wells@cushwake.com

**Braydon Torres**  
Associate  
Office | Capital Markets  
+1 208 207 9485  
braydon.torres@cushwake.com



# RIVER QUARRY

408 E PARKCENTER BLVD | BOISE, IDAHO

8,286 RSF FOR SUBLEASE

## CONTACT

### Jennifer McEntee

Senior Director

Office | Capital Markets

+1 208 287 9495

[jennifer.mcentee@cushwake.com](mailto:jennifer.mcentee@cushwake.com)

### Bree Wells

Director

Office | Capital Markets

+1 208 287 9492

[bree.wells@cushwake.com](mailto:bree.wells@cushwake.com)

### Braydon Torres

Associate

Office | Capital Markets

+1 208 207 9485

[braydon.torres@cushwake.com](mailto:braydon.torres@cushwake.com)

999 W Main Street, Suite 1300  
Boise, ID 83702

[cushmanwakefield.com](https://cushmanwakefield.com)



**CUSHMAN &  
WAKEFIELD**