

**FOR LEASE**

**949 Sherwood Avenue**

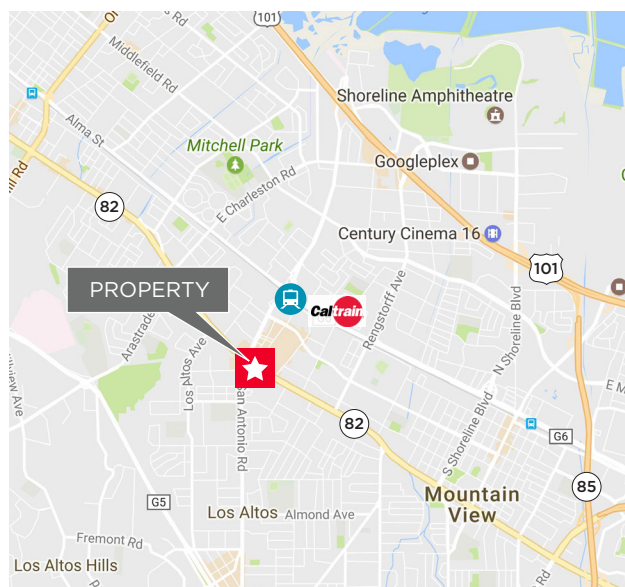
Los Altos, California



## SUITE 200

### Property Highlights:

- ±1,280 SF Second Floor
- Open office with 2 private offices
- Centrally located from 280, 85 and 101
- 17 minute walk to San Antonio Caltrain Station
- Close to amenities, walking distance to Village @ San Antonio, Chef Chu, and Whole Foods
- Flexible terms
- Call agents to tour



**Scott O'Brien**

Director

+1 650 320 0296

scott.obrien@cushwake.com

LIC #01339087

525 University Avenue, Suite 220

Palo Alto, CA 94301

main +1 650 852 1200

fax +1 650 856 1098

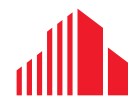
**cushmanwakefield.com**

©2022 Cushman & Wakefield. All rights reserved. The information contained in this communication is strictly confidential. This information has been obtained from sources believed to be reliable but has not been verified. NO WARRANTY OR REPRESENTATION, EXPRESS OR IMPLIED, IS MADE AS TO THE CONDITION OF THE PROPERTY (OR PROPERTIES) REFERENCED HEREIN OR AS TO THE ACCURACY OR COMPLETENESS OF THE INFORMATION CONTAINED HEREIN, AND SAME IS SUBMITTED SUBJECT TO ERRORS, OMISSIONS, CHANGE OF PRICE, RENTAL OR OTHER CONDITIONS, WITHDRAWAL WITHOUT NOTICE, AND TO ANY SPECIAL LISTING CONDITIONS IMPOSED BY THE PROPERTY OWNER(S). ANY PROJECTIONS, OPINIONS OR ESTIMATES ARE SUBJECT TO UNCERTAINTY AND DO NOT SIGNIFY CURRENT OR FUTURE PROPERTY PERFORMANCE.

FOR LEASE

949 Sherwood Avenue

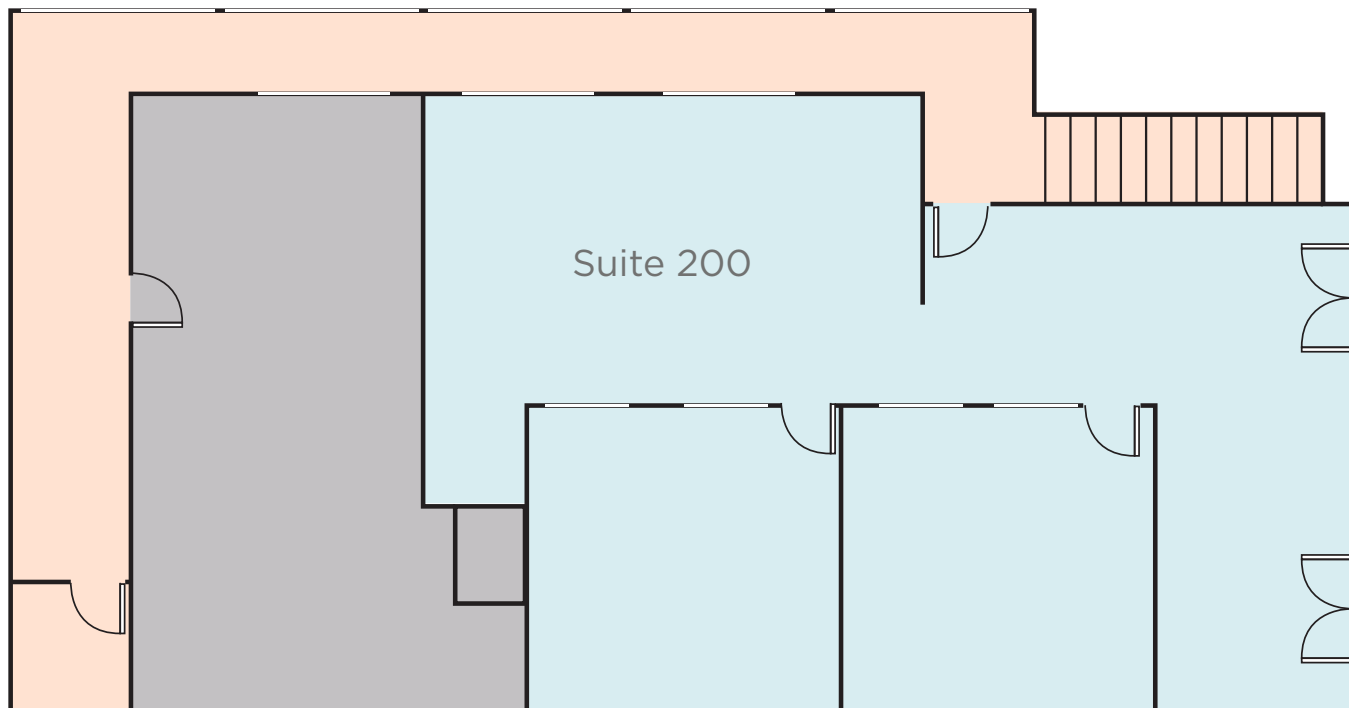
Los Altos, California



CUSHMAN &  
WAKEFIELD

## Floor Plan

Suite 200: ±1,280 SF



Common Area

Leased

Available

Floor plan not to scale

**Scott O'Brien**

Director

+1 650 320 0296

scott.obrien@cushwake.com

LIC #01339087

525 University Avenue, Suite 220

Palo Alto, CA 94301

main +1 650 852 1200

fax +1 650 856 1098

[cushmanwakefield.com](http://cushmanwakefield.com)

©2022 Cushman & Wakefield. All rights reserved. The information contained in this communication is strictly confidential. This information has been obtained from sources believed to be reliable but has not been verified. NO WARRANTY OR REPRESENTATION, EXPRESS OR IMPLIED, IS MADE AS TO THE CONDITION OF THE PROPERTY (OR PROPERTIES) REFERENCED HEREIN OR AS TO THE ACCURACY OR COMPLETENESS OF THE INFORMATION CONTAINED HEREIN, AND SAME IS SUBMITTED SUBJECT TO ERRORS, OMISSIONS, CHANGE OF PRICE, RENTAL OR OTHER CONDITIONS, WITHDRAWAL WITHOUT NOTICE, AND TO ANY SPECIAL LISTING CONDITIONS IMPOSED BY THE PROPERTY OWNER(S). ANY PROJECTIONS, OPINIONS OR ESTIMATES ARE SUBJECT TO UNCERTAINTY AND DO NOT SIGNIFY CURRENT OR FUTURE PROPERTY PERFORMANCE.



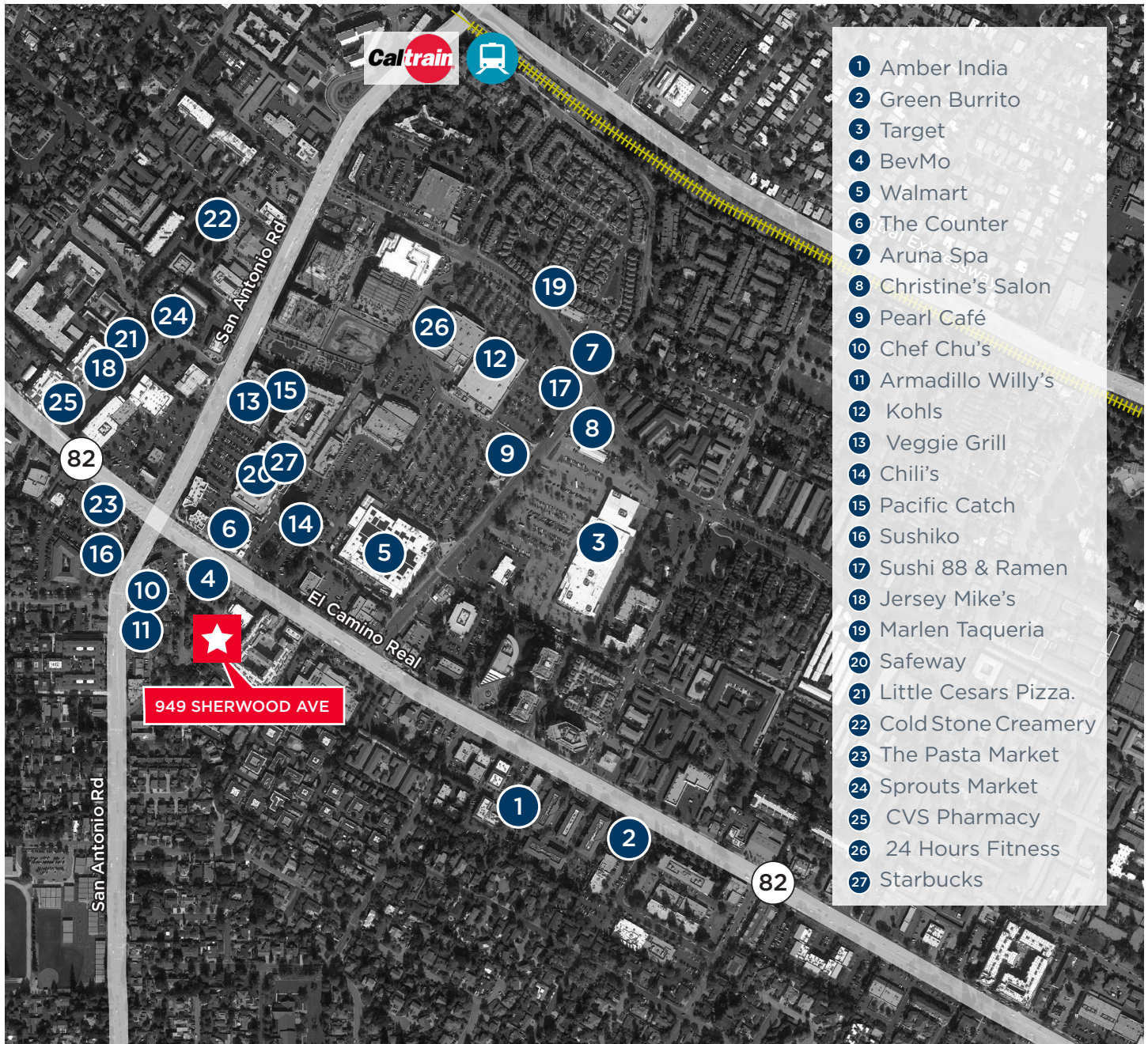
FOR LEASE

# 949 Sherwood Avenue

Los Altos, California



## Amenities:



**Scott O'Brien**  
Director  
+1 650 320 0296  
scott.obrien@cushwake.com  
LIC #01339087

525 University Avenue, Suite 220  
Palo Alto, CA 94301  
main +1 650 852 1200  
fax +1 650 856 1098  
[cushmanwakefield.com](http://cushmanwakefield.com)

©2022 Cushman & Wakefield. All rights reserved. The information contained in this communication is strictly confidential. This information has been obtained from sources believed to be reliable but has not been verified. NO WARRANTY OR REPRESENTATION, EXPRESS OR IMPLIED, IS MADE AS TO THE CONDITION OF THE PROPERTY (OR PROPERTIES) REFERENCED HEREIN OR AS TO THE ACCURACY OR COMPLETENESS OF THE INFORMATION CONTAINED HEREIN, AND SAME IS SUBMITTED SUBJECT TO ERRORS, OMISSIONS, CHANGE OF PRICE, RENTAL OR OTHER CONDITIONS, WITHDRAWAL WITHOUT NOTICE, AND TO ANY SPECIAL LISTING CONDITIONS IMPOSED BY THE PROPERTY OWNER(S). ANY PROJECTIONS, OPINIONS OR ESTIMATES ARE SUBJECT TO UNCERTAINTY AND DO NOT SIGNIFY CURRENT OR FUTURE PROPERTY PERFORMANCE.