



**18200 PRAIRIE STAR PARKWAY**

**LENEXA, KANSAS**





# 18200 PRAIRIE STAR PARKWAY

## LENEXA, KANSAS

### Property Highlights

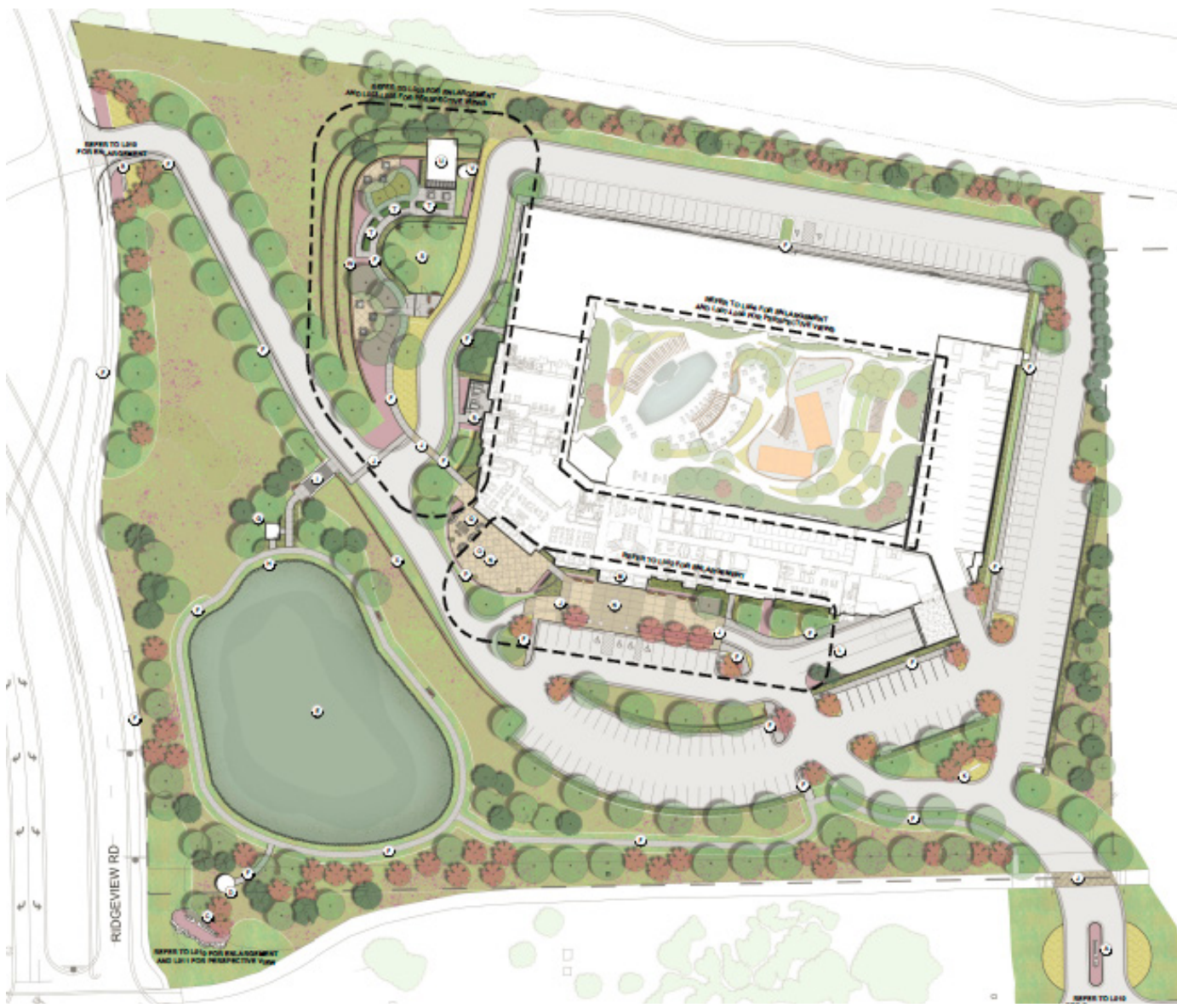
- ±11.3 Acres available
- Zoned RP4 (Planned Residential High-Density) - up to 16 residential units per acre - 180 units
- Overlooks Canyon Farms Golf Club
- Site sits just 1.7 miles from Lenexa City Center, a prime 69-acre mixed-use development
- Five grocery stores with a 4-mile radius



# 18200 PRAIRIE STAR PARKWAY

## LENEXA, KANSAS

Site Plan





# 18200 PRAIRIE STAR PARKWAY

## LENEXA, KANSAS

### Demographics

🏠 Median Home Sale Value - **\$355,000**

📅 Avg # of Monthly Sales - **82**

📅 Days on Market - **24**

#### OLATHE

🏠 Median Home Sale Value - **\$326,000**

📅 Avg # of Monthly Sales - **245**

📅 Days on Market - **18**

#### OVERLAND PARK

🏠 Median Home Sale Value - **\$363,000**

📅 Avg # of Monthly Sales - **316**

📅 Days on Market - **19**

#### SHAWNEE

🏠 Median Home Sale Value - **\$301,000**

📅 Avg # of Monthly Sales - **116**

📅 Days on Market - **16**

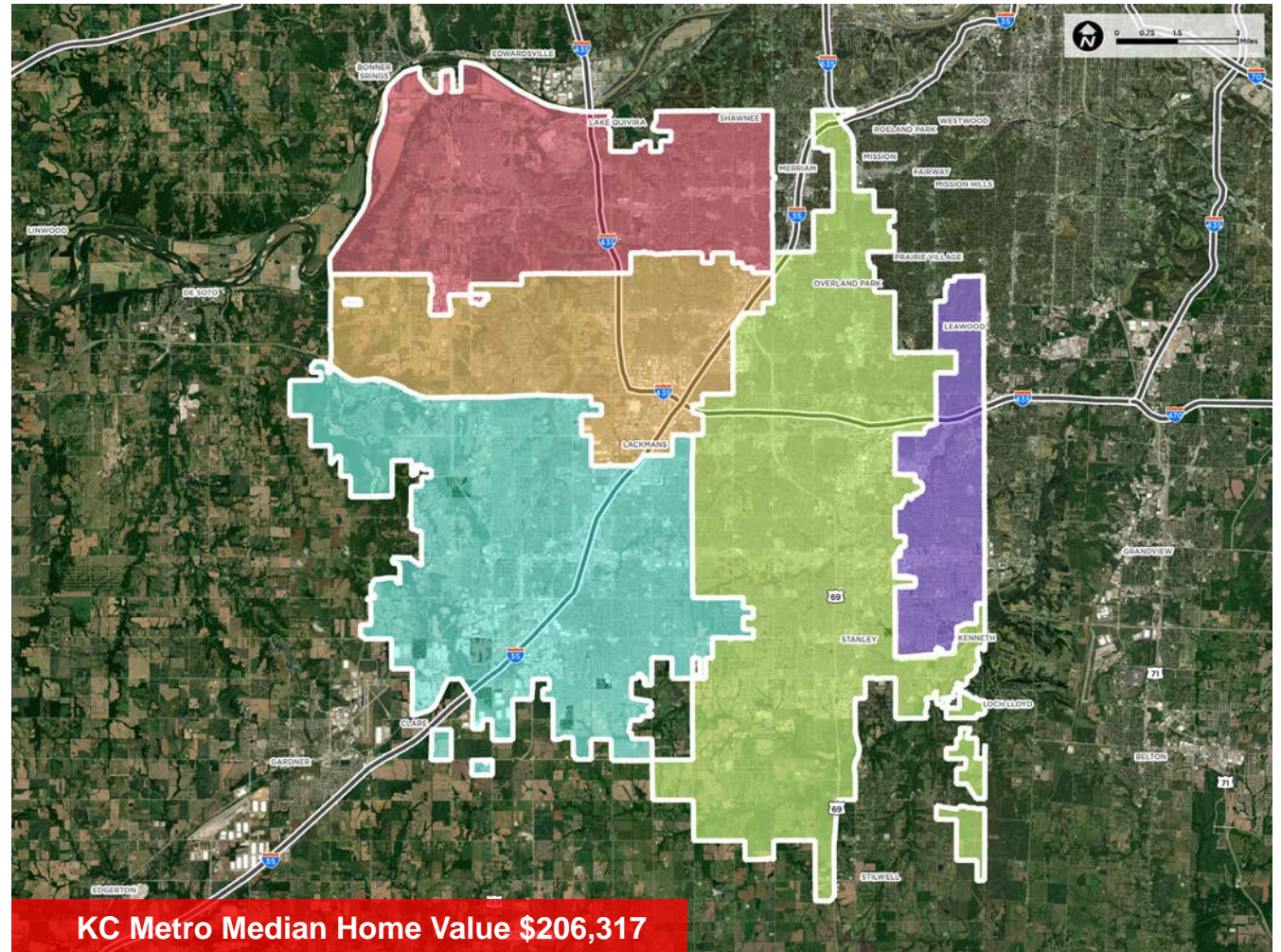
#### LEAWOOD

🏠 Median Home Sale Value - **\$506,000**

📅 Avg # of Monthly Sales - **72**

📅 Days on Market - **36**

\*SOURCE: REDFIN / TIME PERIOD: JANUARY 2020-AUGUST 2021





**18200 PRAIRIE STAR PARKWAY**  
**LENEXA, KANSAS**

## Demographics

## HOME SALES\* - 5 MILE RADIUS

● \$400,000 - \$499,999 - 743

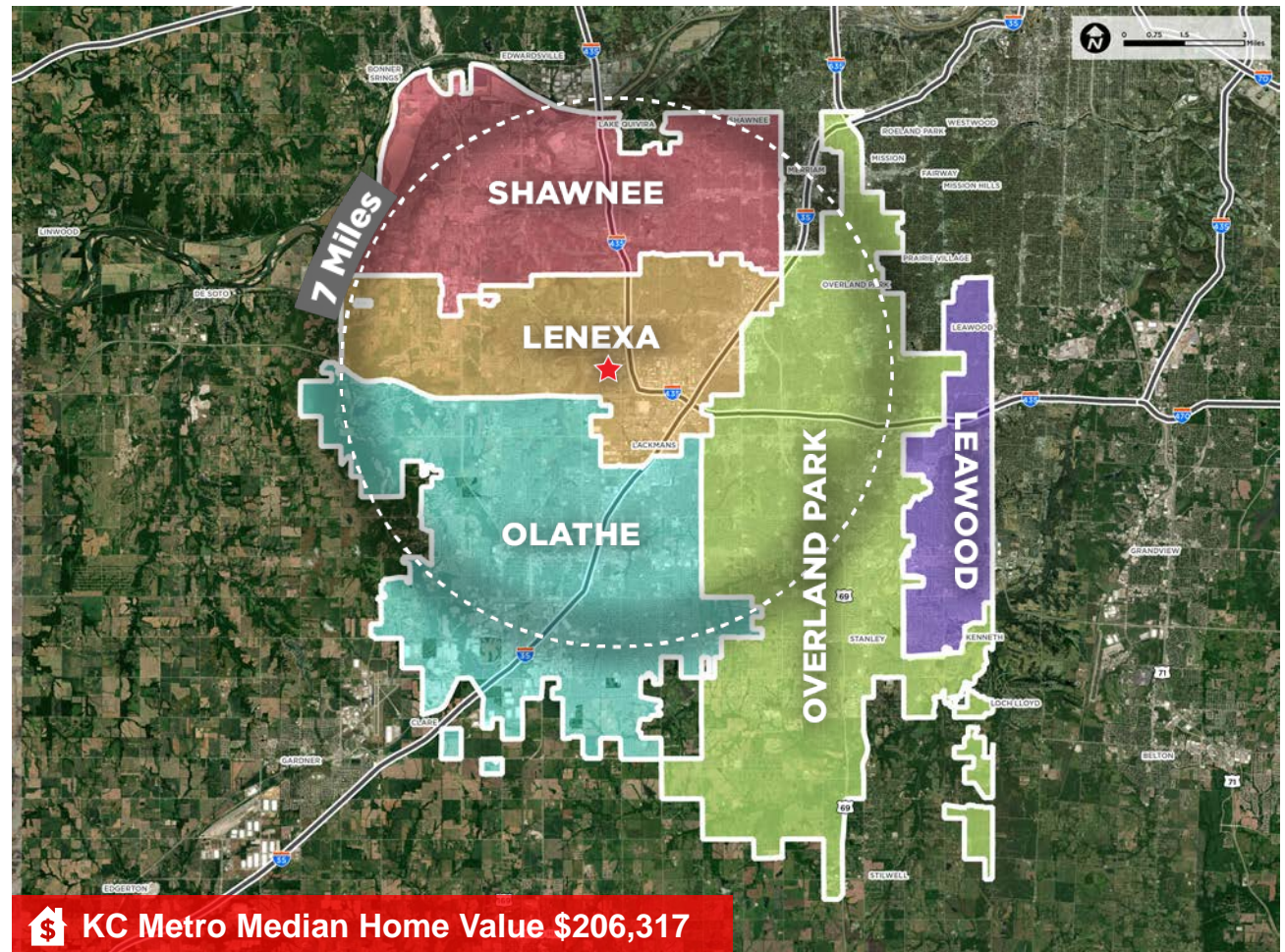
● \$500,000 - \$749,999 - **578**

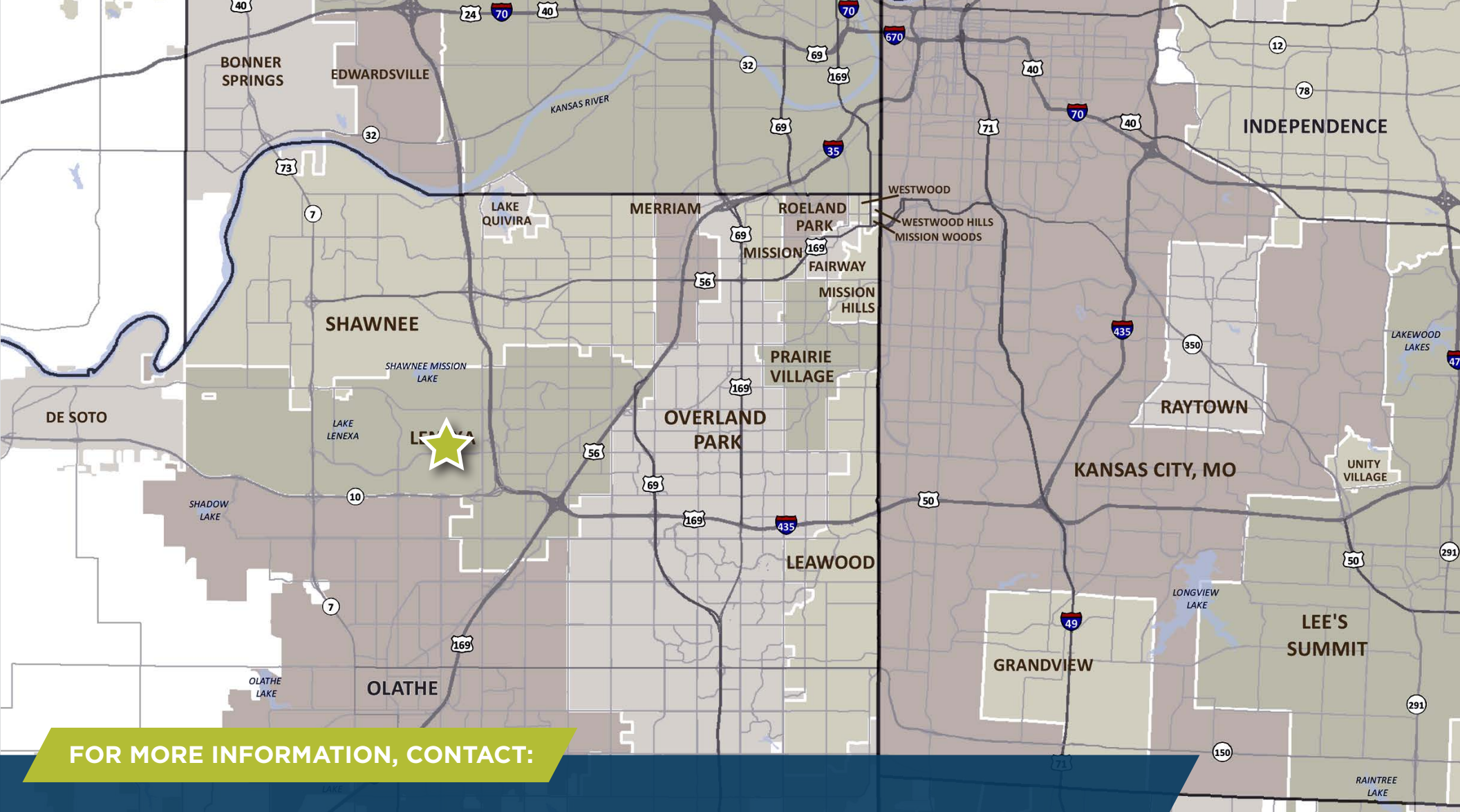
● \$750,000+ - 80

Total Home Sales Over \$400,000 – Last 2 Years - **1,401**

 **KC Metro Median Home Value \$206,317**

**\*SOURCE: MLS**





## FOR MORE INFORMATION, CONTACT:

### **GIB KERR, CCIM**

Managing Principal  
Direct +1 816 412 0212  
[gib.kerr@cushwake.com](mailto:gib.kerr@cushwake.com)

### **JEFFREY BENTZ**

Director  
Direct +1 816 412 0281  
[jeffrey.bentz@cushwake.com](mailto:jeffrey.bentz@cushwake.com)

### **SAM DYLAG**

Director  
Direct +1 617 204 5965  
[sam.dylag@cushwake.com](mailto:sam.dylag@cushwake.com)

### **CHRISTOPHER REMEIKA**

Associate  
Direct +1 617 204 4103  
[christopher.remeika@cushwake.com](mailto:christopher.remeika@cushwake.com)

©2022 Cushman & Wakefield. All rights reserved. The material in this presentation has been prepared solely for information purposes, and is strictly confidential. Any disclosure, use, copying or circulation of this presentation (or the information contained within it) is strictly prohibited, unless you have obtained Cushman & Wakefield's prior written consent. The views expressed in this presentation are the views of the author and do not necessarily reflect the views of Cushman & Wakefield. Neither this presentation nor any part of it shall form the basis of, or be relied upon in connection with any offer, or act as an inducement to enter into any contract or commitment whatsoever. NO REPRESENTATION OR WARRANTY IS GIVEN, EXPRESS OR IMPLIED, AS TO THE ACCURACY OF THE INFORMATION CONTAINED WITHIN THIS PRESENTATION, AND CUSHMAN & WAKEFIELD IS UNDER NO OBLIGATION TO SUBSEQUENTLY CORRECT IT IN THE EVENT OF ERRORS.

