

# N. SR 135

Greenwood, IN

±45 ACRES

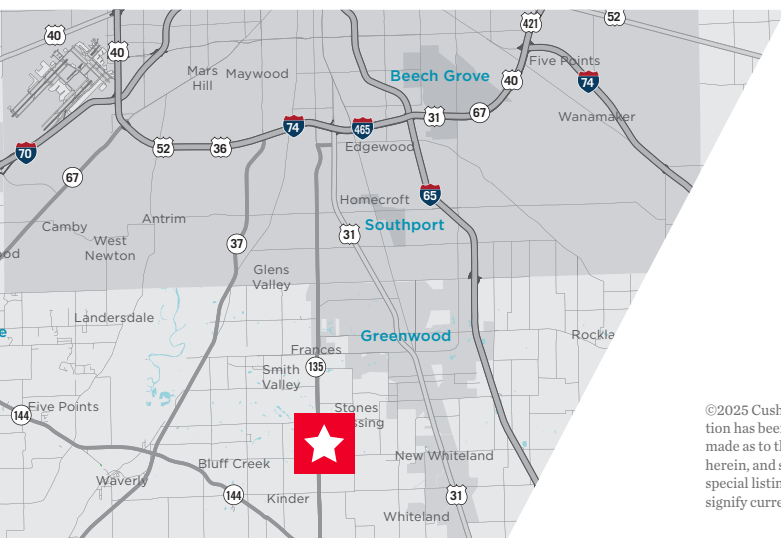
## PROPERTY HIGHLIGHTS

±45 acres located in desirable  
Center Grove

City utilities nearby

Zoned CL (Commercial Large) and AG

Potential Multifamily Site



**BO LEFFEL**

Vice Chair

+1 317 639 0441

bo.leffel@cushwake.com

One American Square, Suite 1800 | Indianapolis, IN 46282

Main +1 317 639 0515 | Fax +1 317 639 0504

cushmanwakefield.com

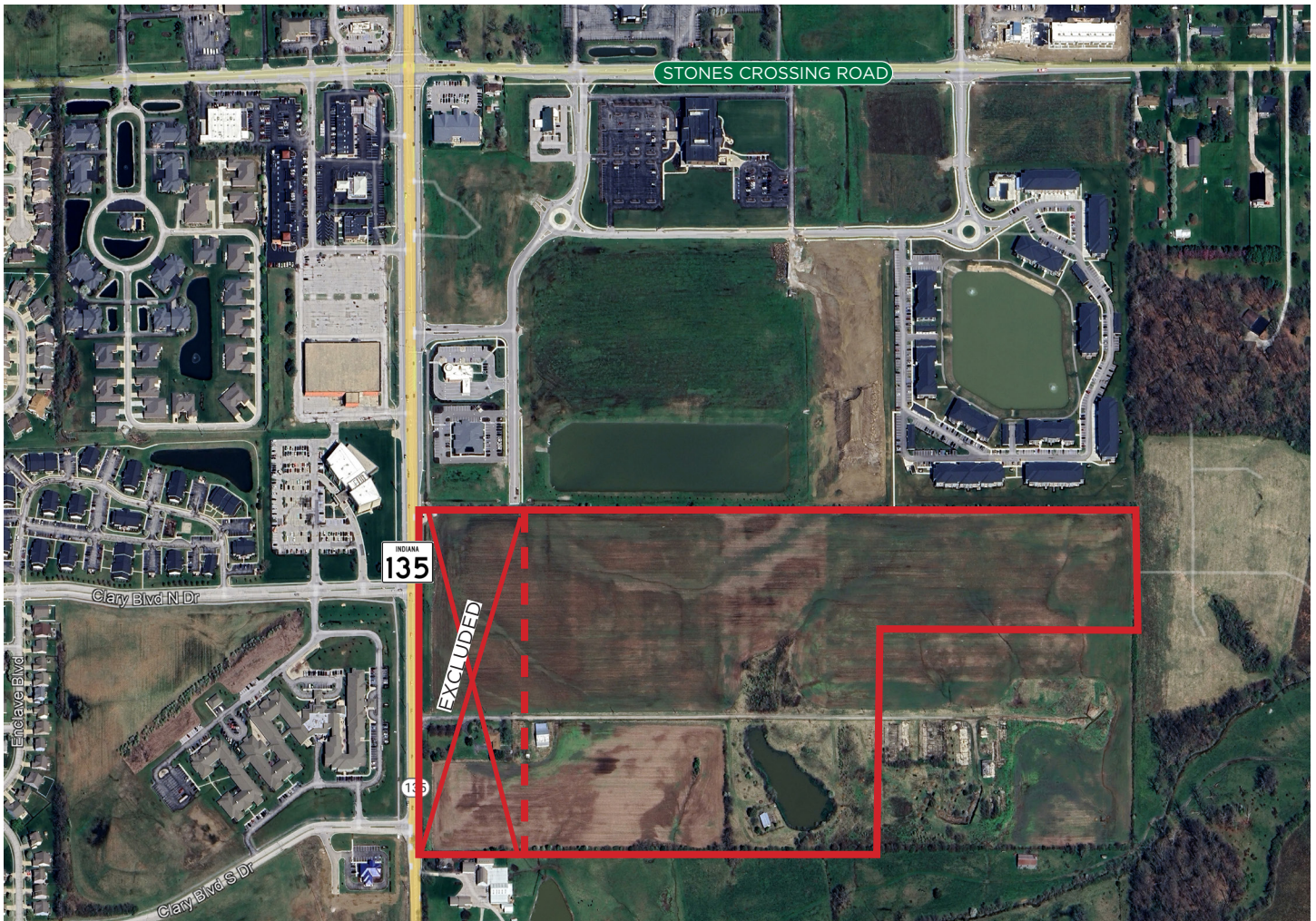
©2025 Cushman & Wakefield. All rights reserved. The information contained in this communication is strictly confidential. This information has been obtained from sources believed to be reliable but has not been verified. No warranty or representation, express or implied, is made as to the condition of the property (or properties) referenced herein or as to the accuracy or completeness of the information contained herein, and same is submitted subject to errors, omissions, change of price, rental or other conditions, withdrawal without notice, and to any special listing conditions imposed by the property owner(s). Any projections, opinions or estimates are subject to uncertainty and do not signify current or future property performance.



# N. SR 135

Greenwood, IN

±45 ACRES



## Demographics

	1 Mile	3 Mile	5 Mile
Population	4,874	46,800	124,001
AVG. HH Income	\$131,158	\$147,251	\$126,059
Daytime Population	2,201	20,748	63,827

## Traffic Count

SR 135: 29,316 VPD

Stones Crossing Rd: 2,575 VPD

## BO LEFFEL

Vice Chair

+1 317 639 0441

bo.leffel@cushwake.com

One American Square, Suite 1800

Indianapolis, IN 46282

Main +1 317 639 0515

Fax +1 317 639 0504

**cushmanwakefield.com**