

# 2.8 ACRES

Land at Allison Pointe  
5110 E 82nd Street  
Indianapolis, IN 46250

## PROPERTY HIGHLIGHTS

2.8 Acre Land Parcels

Lakefront property with I-465  
Visibility

Site drainage detention in place

Sewer and Water at site

Zoned C-3

Potential Multifamily or Hospitality Location



**BO LEFFEL**  
Vice Chair  
+1 317 639 0441  
bo.leffel@cushwake.com

**JOHN VANDENBARK**  
JLL  
+1 317 810 7178  
john.vandenbark@am.jll.com



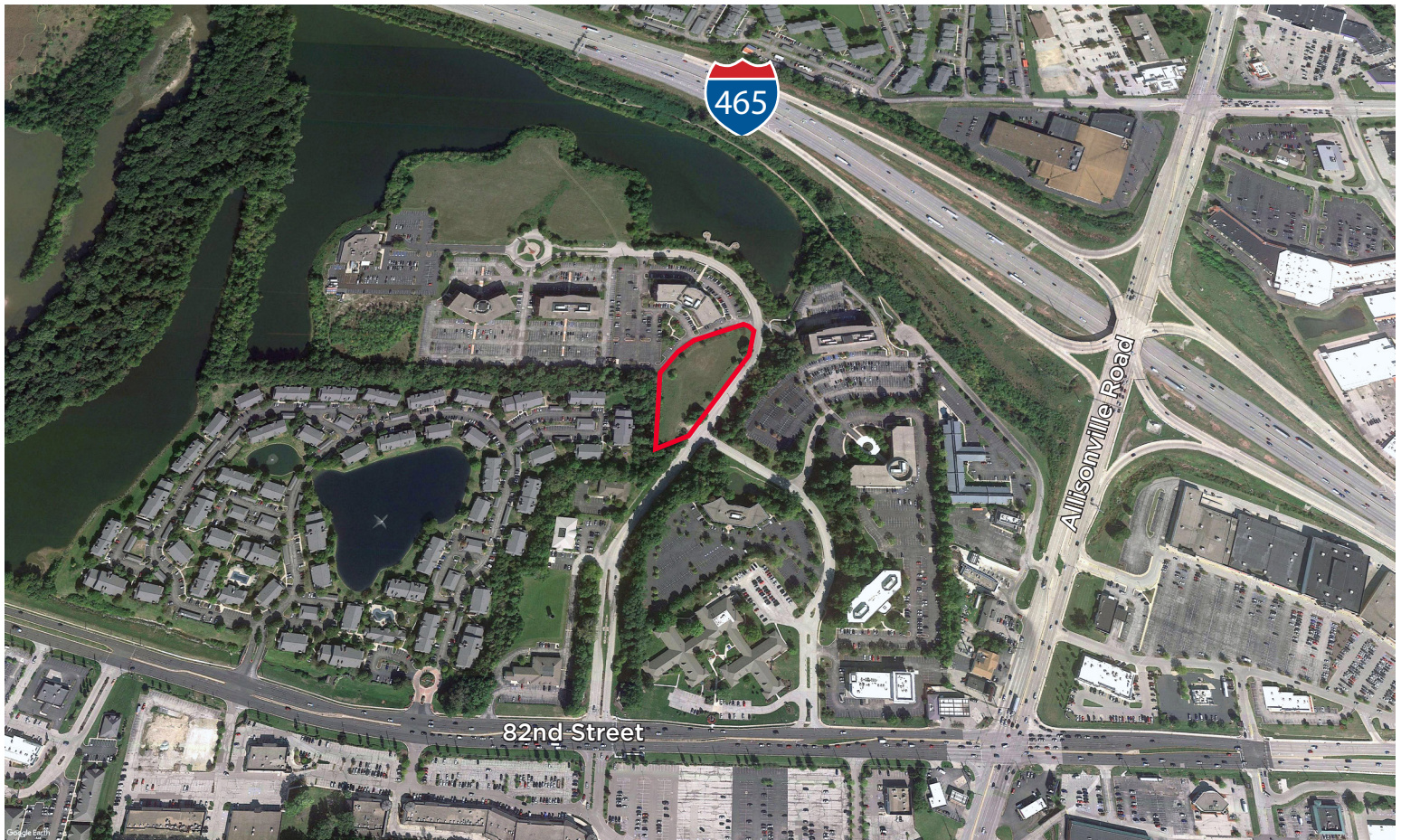
One American Square, Suite 1800 | Indianapolis, IN 46282  
Main +1 317 639 0515 | Fax +1 317 639 0504  
cushmanwakefield.com

©2025 Cushman & Wakefield. All rights reserved. The information contained in this communication is strictly confidential. This information has been obtained from sources believed to be reliable but has not been verified. No warranty or representation, express or implied, is made as to the condition of the property (or properties) referenced herein or as to the accuracy or completeness of the information contained herein, and same is submitted subject to errors, omissions, change of price, rental or other conditions, withdrawal without notice, and to any special listing conditions imposed by the property owner(s). Any projections, opinions or estimates are subject to uncertainty and do not signify current or future property performance.



# 2.8 ACRES

Land at Allison Pointe  
5110 E 82nd Street  
Indianapolis, IN 46250



## Demographics

	1 Mile	3 Mile	5 Mile
Population	6,630	60,820	175,838
AVG. HH Income	\$95,877	\$89,579	\$101,418
Daytime Population	8,725	87,162	196,699

## Traffic Counts

82nd Street	22,549 AADT
Allisonville Road	39,468 AADT
I-465	144,994 AADT

**BO LEFFEL**  
Vice Chair  
+1 317 639 0441  
bo.leffel@cushwake.com

One American Square, Suite 1800  
Indianapolis, IN 46282  
Main +1 317 639 0515  
Fax +1 317 639 0504  
[cushmanwakefield.com](http://cushmanwakefield.com)

**JOHN VANDENBARK**  
JLL  
+1 317 810 7178  
john.vandenbark@am.jll.com

