

4,054 RSF Plug & Play Sublease

# 1510 FASHION ISLAND BLVD

SAN MATEO, CA 94404



CUSHMAN &  
WAKEFIELD



# 1510 FASHION ISLAND BLVD

SAN MATEO, CA 94404

## PROPERTY HIGHLIGHTS



**LEASE EXPIRATION**  
6/30/2025



**CONFERENCE ROOM**  
TWO (2)



**PRIVATE OFFICE**  
TWO (2)



**PHONE ROOM**

- TWO (2) BUILT OUT
- THREE (3) STAND ALONE PODS



**FULLY FURNISHED**  
TWENTY-ONE (21)  
SIT-STAND DESKS



**KITCHENETTE**



**STORAGE/IT CLOSET**



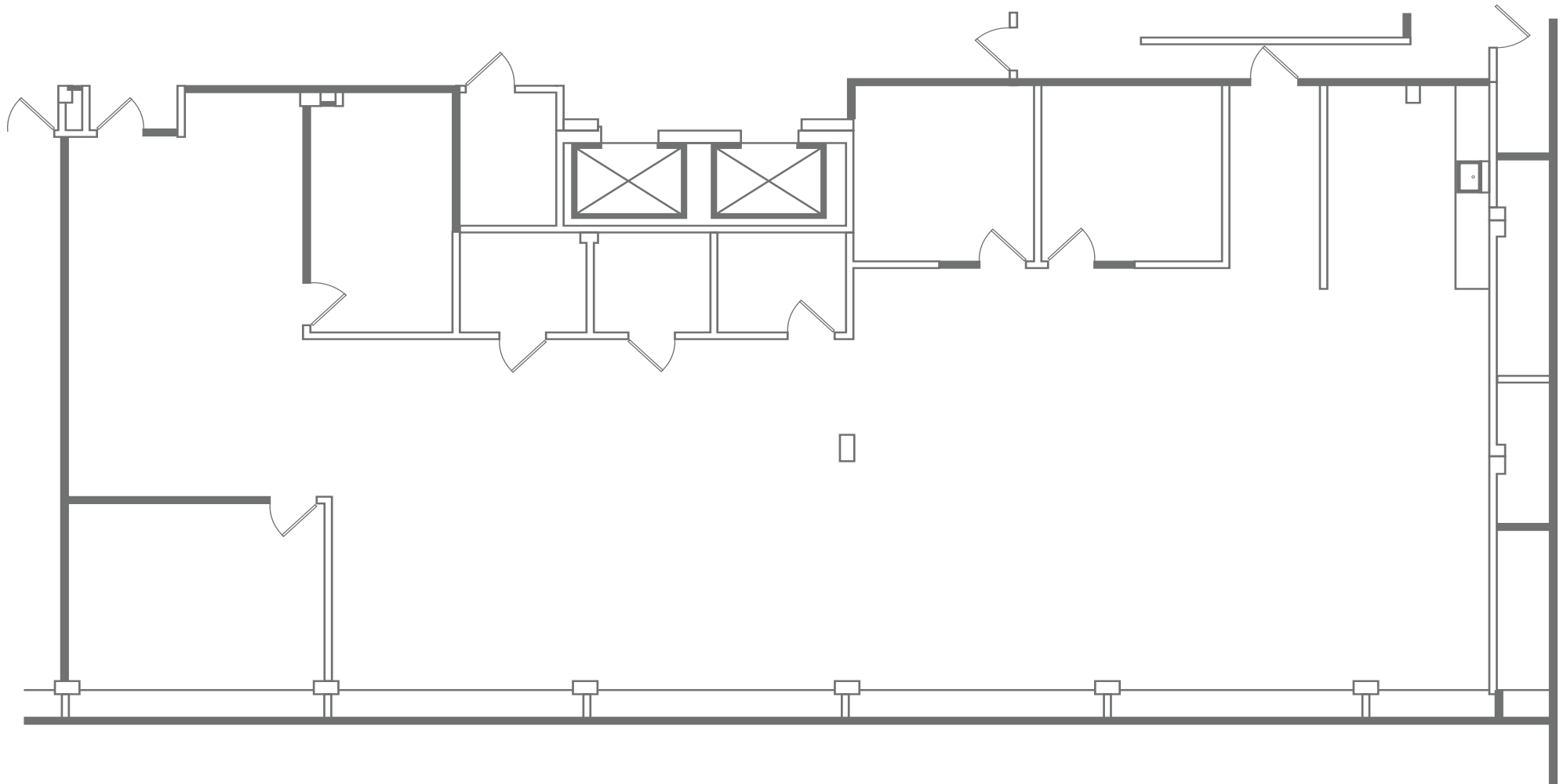
**EV CHARGING ONSITE**



# 1510 FASHION ISLAND BLVD

SAN MATEO, CA 94404

## FLOOR PLAN





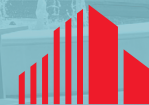
**FOR MORE INFORMATION, CONTACT:**

**CHRIS BLOM**

Director  
+1 650 931 2210  
[chris.blom@cushwake.com](mailto:chris.blom@cushwake.com)  
CA Lic #02031205

**GARY BOITANO**

Managing Director  
+1 650 401 2122  
[gary.boitano@cushwake.com](mailto:gary.boitano@cushwake.com)  
CA Lic #01902693



**CUSHMAN &  
WAKEFIELD**

1350 Old Bayshore Highway  
Suite 900  
Burlingame, CA 94010  
+1 650 347 3700  
[cushmanwakefield.com](http://cushmanwakefield.com)

©2024 Cushman & Wakefield. All rights reserved. The information contained in this communication is strictly confidential. This information has been obtained from sources believed to be reliable but has not been verified. NO WARRANTY OR REPRESENTATION, EXPRESS OR IMPLIED, IS MADE AS TO THE CONDITION OF THE PROPERTY (OR PROPERTIES) REFERENCED HEREIN OR AS TO THE ACCURACY OR COMPLETENESS OF THE INFORMATION CONTAINED HEREIN, AND SAME IS SUBMITTED SUBJECT TO ERRORS, OMISSIONS, CHANGE OF PRICE, RENTAL OR OTHER CONDITIONS, WITHDRAWAL WITHOUT NOTICE, AND TO ANY SPECIAL LISTING CONDITIONS IMPOSED BY THE PROPERTY OWNER(S). ANY PROJECTIONS, OPINIONS OR ESTIMATES ARE SUBJECT TO UNCERTAINTY AND DO NOT SIGNIFY CURRENT OR FUTURE PROPERTY PERFORMANCE.