



CUSHMAN &
WAKEFIELD

Commercial Kentucky

9000

9000 WESSEX PLACE

FOR LEASE | 1,436 - 2,339 SF AVAILABLE

Refund Advantage
A Division of MetaBank



Valley Forge
PROPER
Allgeier Company



Wessex
Group

9000 WESSEX PLACE



PROPERTY HIGHLIGHTS

Well-maintained, efficient office building

Superior east end lease value

Strategically positioned in the Shelbyville/
Hurstbourne intersection

Superior walkability to nearby, restaurants,
banks, hospitality and new apartments



PROPERTY DETAILS

Address: 9000 Wessex Pl
Louisville, KY 40222

Building Size: 45,000 sf

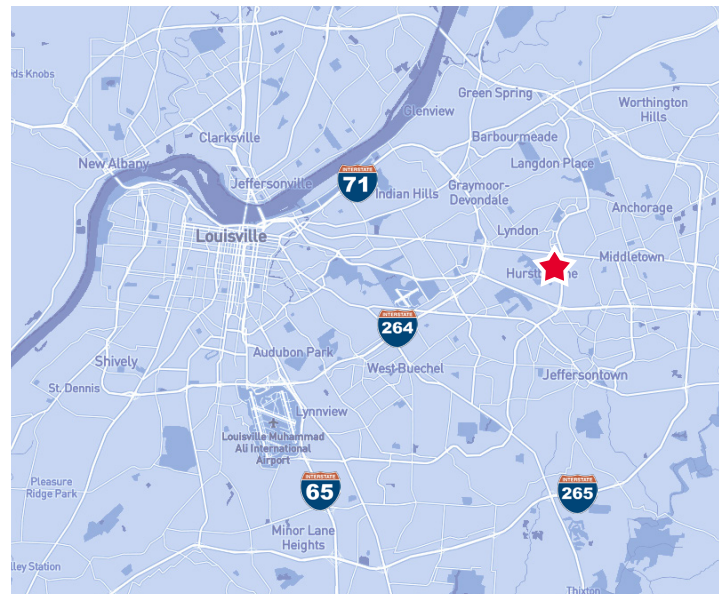
Space Available: 1,436 - 2,339 sf

Lease Rate: \$17.00/sf

Lease Type: Full Service

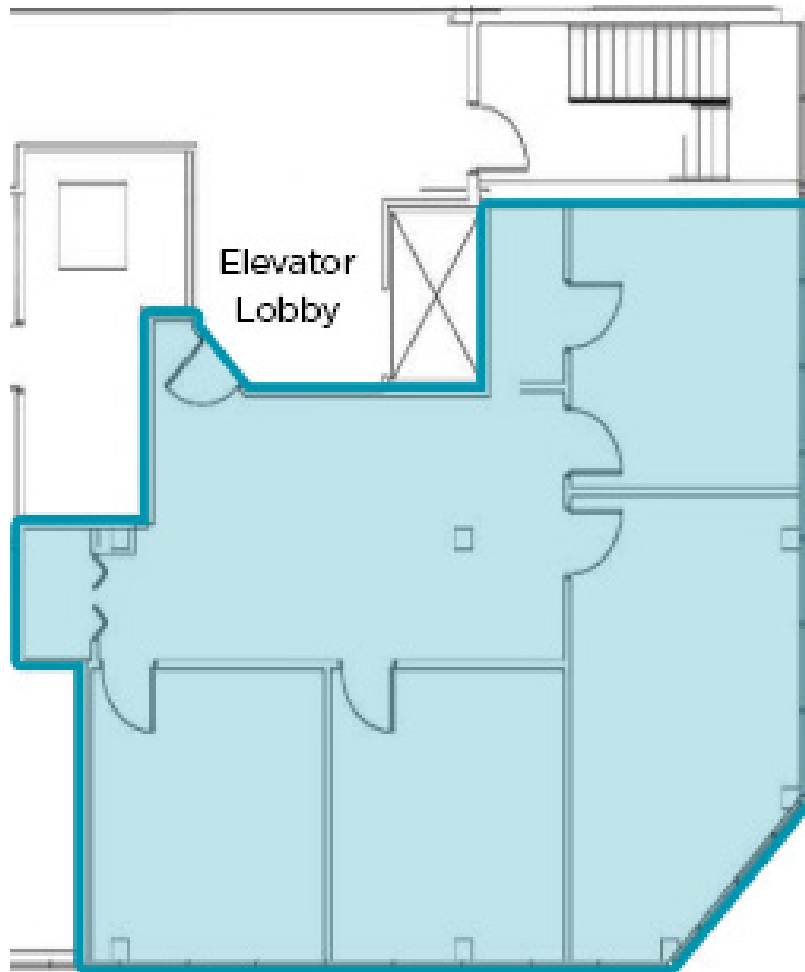
Zoning: OR-3

Year Built: 1985



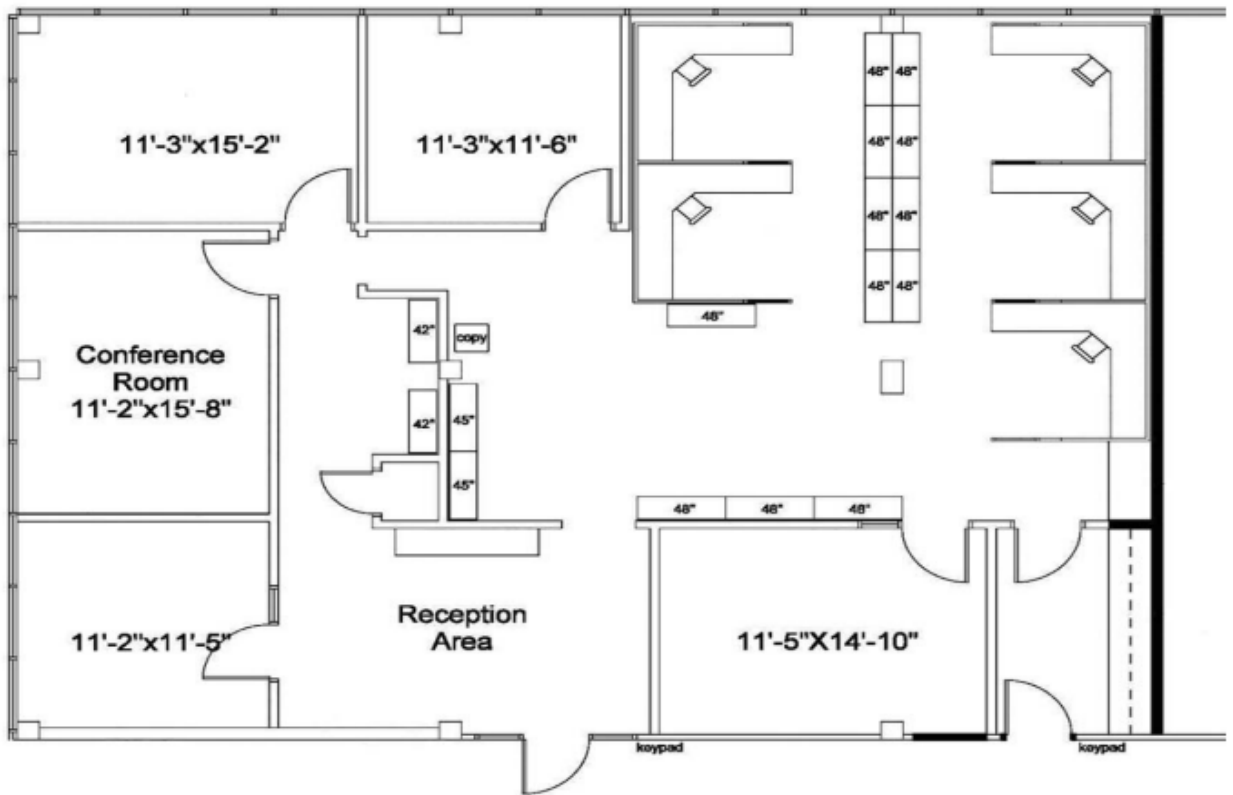
SUITE 200 FLOOR PLAN

1,436 SF AVAILABLE

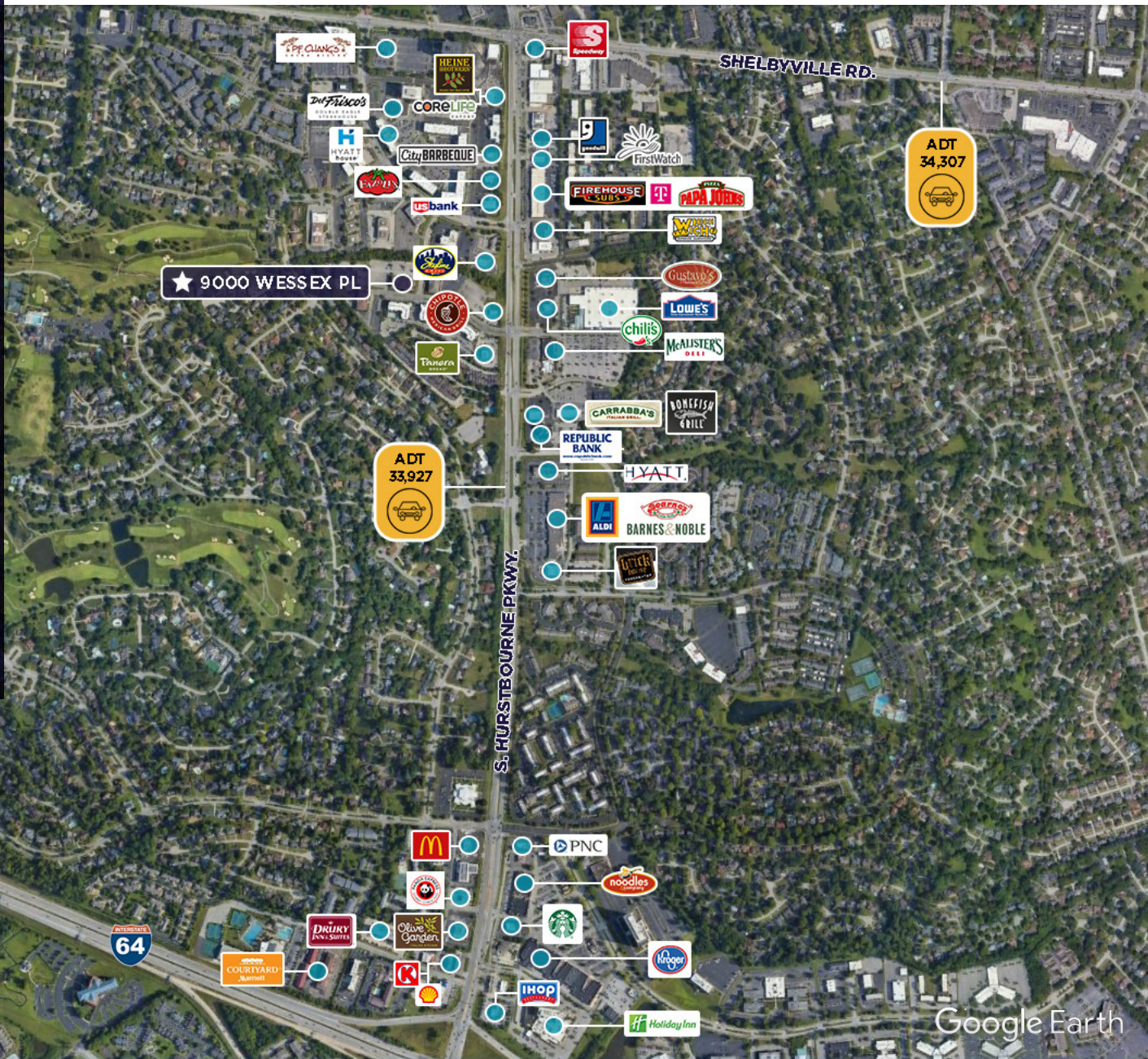


SUITE 207 FLOOR PLAN




2.339 SF AVAILABLE



LOCATION MAP



DEMOGRAPHICS

Year	1 Mile	3 Miles	5 Miles
 Population:	11,723	75,354	203,036
 Average Household Income:	\$121,600	\$106,520	\$108,928
 Number of Household:	5,346	34,514	89,446



CONTACT

SAM GRAY
Senior Associate
+1 502 719 3240
samgray@commercialkentucky.com

SAM ENGLISH, CFA
Senior Director
+1 502 719 3244
senglish@commercialkentucky.com

©2024 Cushman & Wakefield. All rights reserved. The material in this presentation has been prepared solely for information purposes, and is strictly confidential. Any disclosure, use, copying or circulation of this presentation (or the information contained within it) is strictly prohibited, unless you have obtained Cushman & Wakefield's prior written consent. The views expressed in this presentation are the views of the author and do not necessarily reflect the views of Cushman & Wakefield. Neither this presentation nor any part of it shall form the basis of, or be relied upon in connection with any offer, or act as an inducement to enter into any contract or commitment whatsoever. NO REPRESENTATION OR WARRANTY IS GIVEN, EXPRESS OR IMPLIED, AS TO THE ACCURACY OF THE INFORMATION CONTAINED WITHIN THIS PRESENTATION, AND CUSHMAN & WAKEFIELD IS UNDER NO OBLIGATION TO SUBSEQUENTLY CORRECT IT IN THE EVENT OF ERRORS.



**CUSHMAN &
WAKEFIELD**

Commercial Kentucky