

Centre 32

2770 32 Avenue NE, Calgary, AB



Retail Space For Lease

Welcome to Centre 32

Property Information

Available Space:	Unit 16: 1,250 sf
Availability:	90 - 120 days' notice
Rates:	Market
Op Costs:	\$16.69 *not including utilities, metered separately
Term:	5-10 Years

Property Highlights

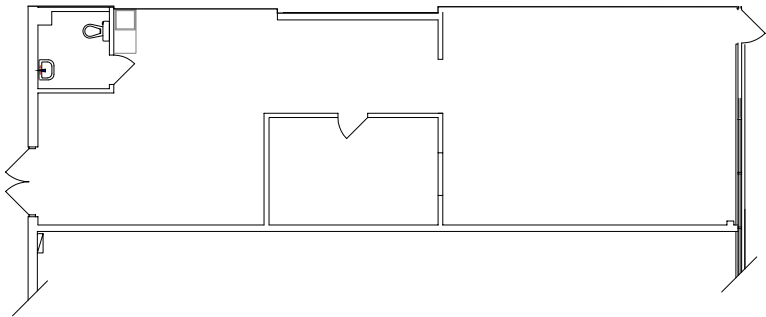
- Located along 32 Ave NE (27,000 vehicles per day)
- Close proximity to Sunridge Mall, Peter Lougheed Centre, Costco, London Town Square, and more.
- Ample surface parking
- Multiple transit stops nearby



Floor Plan

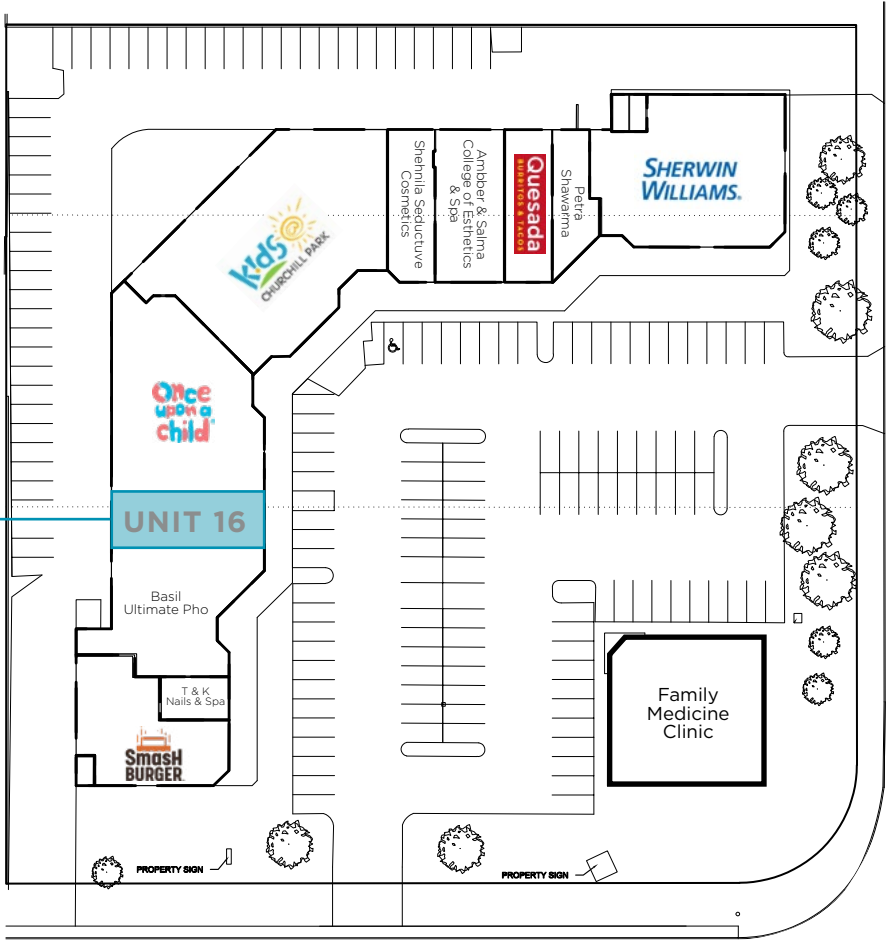
Unit 16

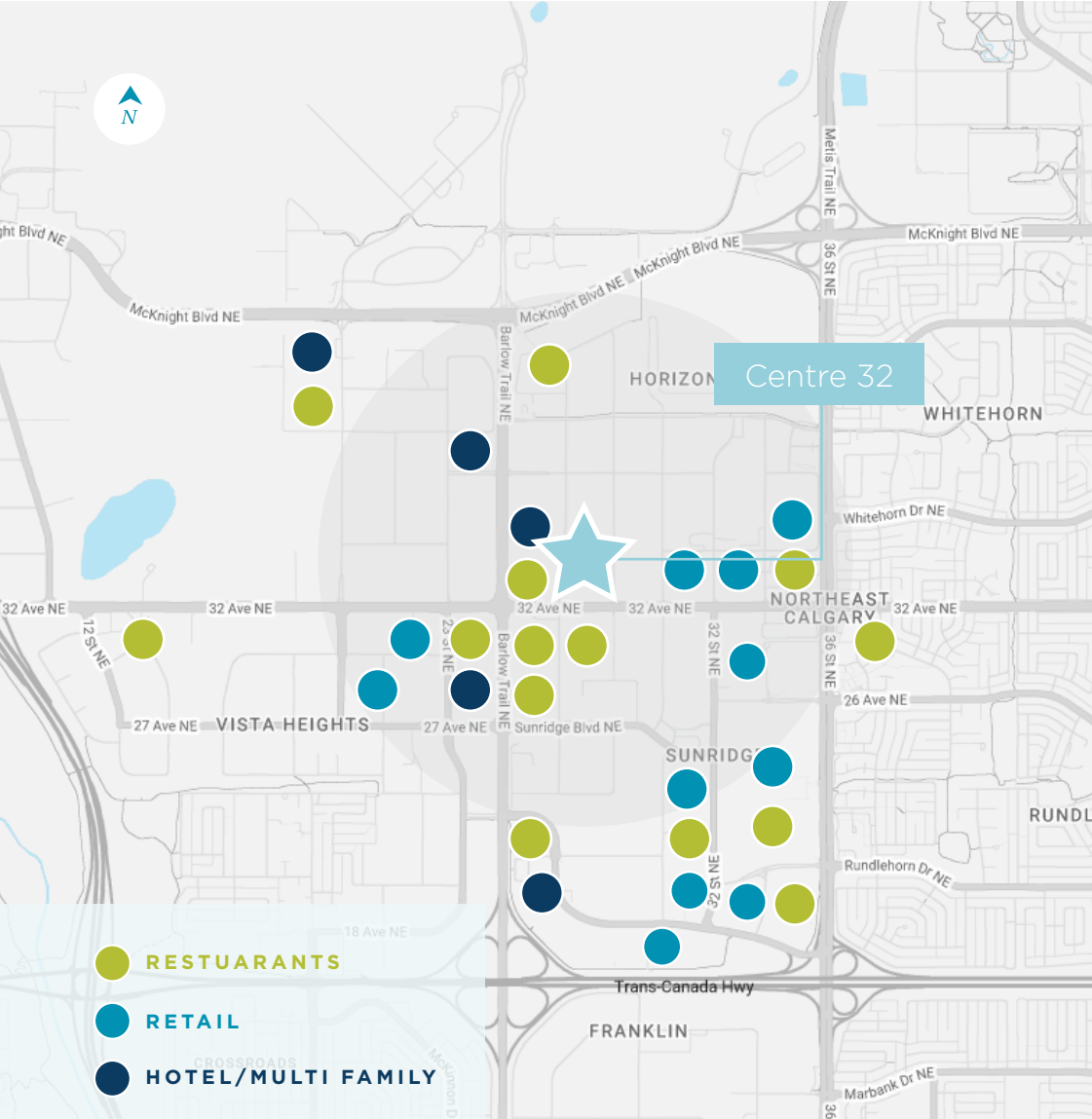
1,250 sf



Potential Uses:

- Bakery
- Barbershop
- Dentist
- Education/tutoring
- Ethnic food store
- Small format liquor
- Specialty medical
- Quick service restaurant





34,513
TOTAL POPULATION

89,448
DAYTIME POPULATION

\$92,020
AVG HOUSEHOLD
INCOME

39
AVG AGE

Within 3 km



13 minutes to
Downtown Calgary



6 minutes to
the Trans-Canada
Highway



15 minutes to
Calgary International
Airport

Contact

Ryan Rutherford
Vice President
Retail Sales & Leasing
403 973 4677
ryan.rutherford@cushwake.com

Nick Preston, MBA
Vice President
Retail Sales & Leasing
403 467 9222
nick.preston@cushwake.com



Cushman & Wakefield ULC | 250 6 Ave SW, Suite 2400, Calgary, AB T2P 3H7 | cushmanwakefield.com

©2025 Cushman & Wakefield. All rights reserved. The information contained in this communication is strictly confidential. This information has been obtained from sources believed to be reliable but has not been verified. NO WARRANTY OR REPRESENTATION, EXPRESS OR IMPLIED, IS MADE AS TO THE CONDITION OF THE PROPERTY (OR PROPERTIES) REFERENCED HEREIN OR AS TO THE ACCURACY OR COMPLETENESS OF THE INFORMATION CONTAINED HEREIN, AND SAME IS SUBMITTED SUBJECT TO ERRORS, OMISSIONS, CHANGE OF PRICE, RENTAL OR OTHER CONDITIONS, WITHDRAWAL WITHOUT NOTICE, AND TO ANY SPECIAL LISTING CONDITIONS IMPOSED BY THE PROPERTY OWNER(S). ANY PROJECTIONS, OPINIONS OR ESTIMATES ARE SUBJECT TO UNCERTAINTY AND DO NOT SIGNIFY CURRENT OR FUTURE PROPERTY PERFORMANCE.