

**(+/-) 3,954 SF ACCESSIBLE
MAIN FLOOR OFFICE SPACE
FOR LEASE**

**OFFICE FOR LEASE
55 DONALD STREET**

**Ryan Munt
Executive Vice President**

Ryan Munt Personal Real Estate Corporation

T 204 928 5015

C 204 298 1905

ryan.munt@cwstevenson.ca

 **CUSHMAN & WAKEFIELD**
Winnipeg

 **Stevenson**



PROPERTY HIGHLIGHTS

- Efficient floorplate with attractive improvements in place
- Interior layout features 10 offices, 1 boardroom, open work area, a kitchenette, and a fully accessible UTR restroom
- Ample parking available on site
- Secure access via key fob entry
- Available immediately

LEASE RATE: \$10.00 PSF NET

CAM & TAX: \$13.03 (2024 EST)

**INCLUDES MANAGEMENT FEE*

(+/-) 3,954 SF AVAILABLE



Independently Owned and Operated / A Member of the Cushman & Wakefield Alliance ©2024 Cushman & Wakefield. All rights reserved. The information contained in this communication is strictly confidential.

This information has been obtained from sources believed to be reliable but has not been verified. NO WARRANTY OR REPRESENTATION, EXPRESS OR IMPLIED, IS MADE AS TO THE CONDITION OF THE PROPERTY (OR PROPERTIES) REFERENCED HEREIN OR AS TO THE ACCURACY OR COMPLETENESS OF THE INFORMATION CONTAINED HEREIN, AND SAME IS SUBMITTED SUBJECT TO ERRORS, OMISSIONS, CHANGE OF PRICE, RENTAL OR OTHER CONDITIONS, WITHDRAWAL WITHOUT NOTICE, AND TO ANY SPECIAL LISTING CONDITIONS IMPOSED BY THE PROPERTY OWNER(S). ANY PROJECTIONS, OPINIONS OR ESTIMATES ARE SUBJECT TO UNCERTAINTY AND DO NOT SIGNIFY CURRENT OR FUTURE PROPERTY PERFORMANCE.



BURTON CUMMINGS
THEATRE

MILLENNIUM
LIBRARY

BLUE CROSS PARK

TRUE NORTH
SQUARE

DELTA HOTEL

RBC CONVENTION
CENTRE

UNION STATION

THE FORT GARRY
HOTEL



SCORES	
WALK	96
TRANSIT	82
BIKE	92

LOCAL AMENITIES

MANITOBA LEGISLATURE	1
CANADA MUSEUM OF HUMAN RIGHTS	2
CANADA LIFE CENTRE	3
RBC CONVENTION CENTRE	4
PROVINCIAL LAW COURTS	5
MILLENNIUM LIBRARY	6
PORTAGE PLACE SHOPPING CENTRE	7
CITY PLACE SHOPPING CENTRES	8
TRUE NORTH SQUARE	9
WINNIPEG SQUARE SHOPPING CENTRE	10
UNIVERSITY OF WINNIPEG	11
WINNIPEG ART GALLERY	12
CHILDREN'S MUSEUM	13
EXCHANGE DISTRICT	14
THE FORKS	15
CARNAVAL BRIZILIAN BBQ	16
DEER & ALMOND	17
WEE JOHNNY'S IRISH PUB	18
HY'S STEAKHOUSE	19
TIM HORTONS	20
CIBC	21

FAIRMONT HOTEL	22
EARLS KITCHEN & BAR	23
RADISSON HOTEL	24
ALT HOTEL	25
MERCHANT KITCHEN	26
BROWNS SOCIALHOUSE	27
TIM HORTONS	28
CLAY OVEN	29
HUMPHRY INN	30
MODERN ELECTRIC LUNCH	31
QUESADA	32
DELTA HOTEL	33
LA ROCA	34
EAST INDIAN COMPANY	35
THE KEG STEAKHOUSE	36
JOHNNY G'S	37
THE FORT GARRY HOTEL	38

PARKS & LEISURE

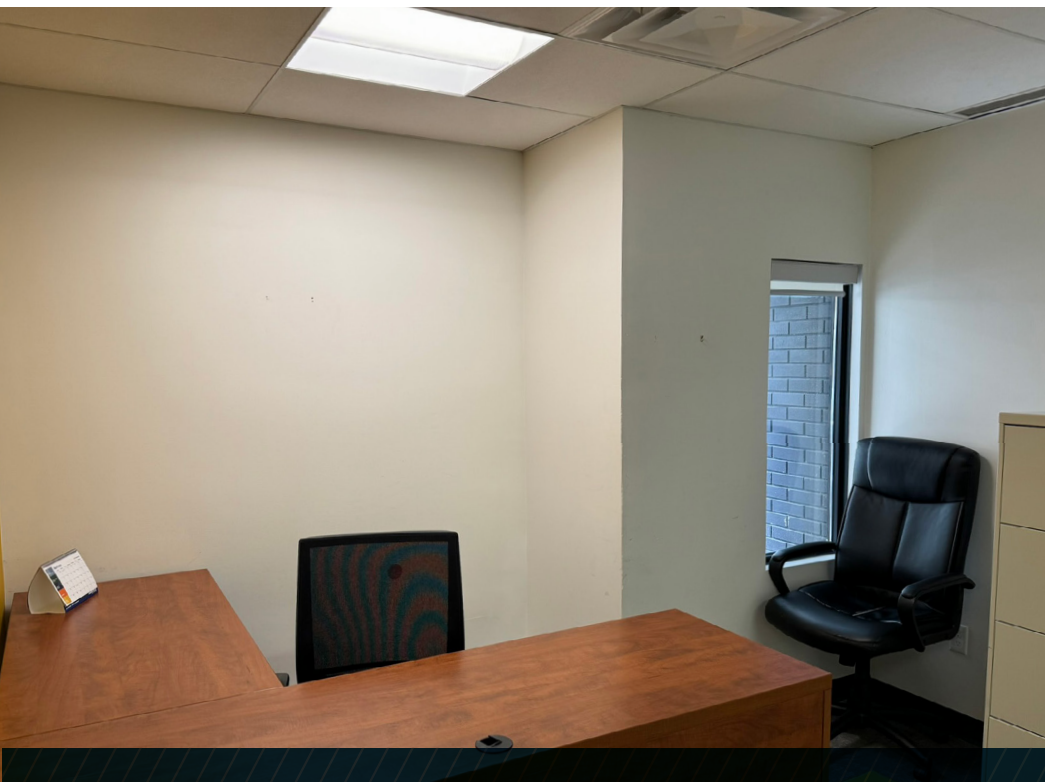
MCFAYDEN PARK	1
FORT GARRY	2
BONNYCASTLE PARK	3
WETLAND GARDEN	4
SLIDE HILL	5
SHAW PARK	6
MEMORIAL PROVINCIAL PARK	7



55 DONALD STREET

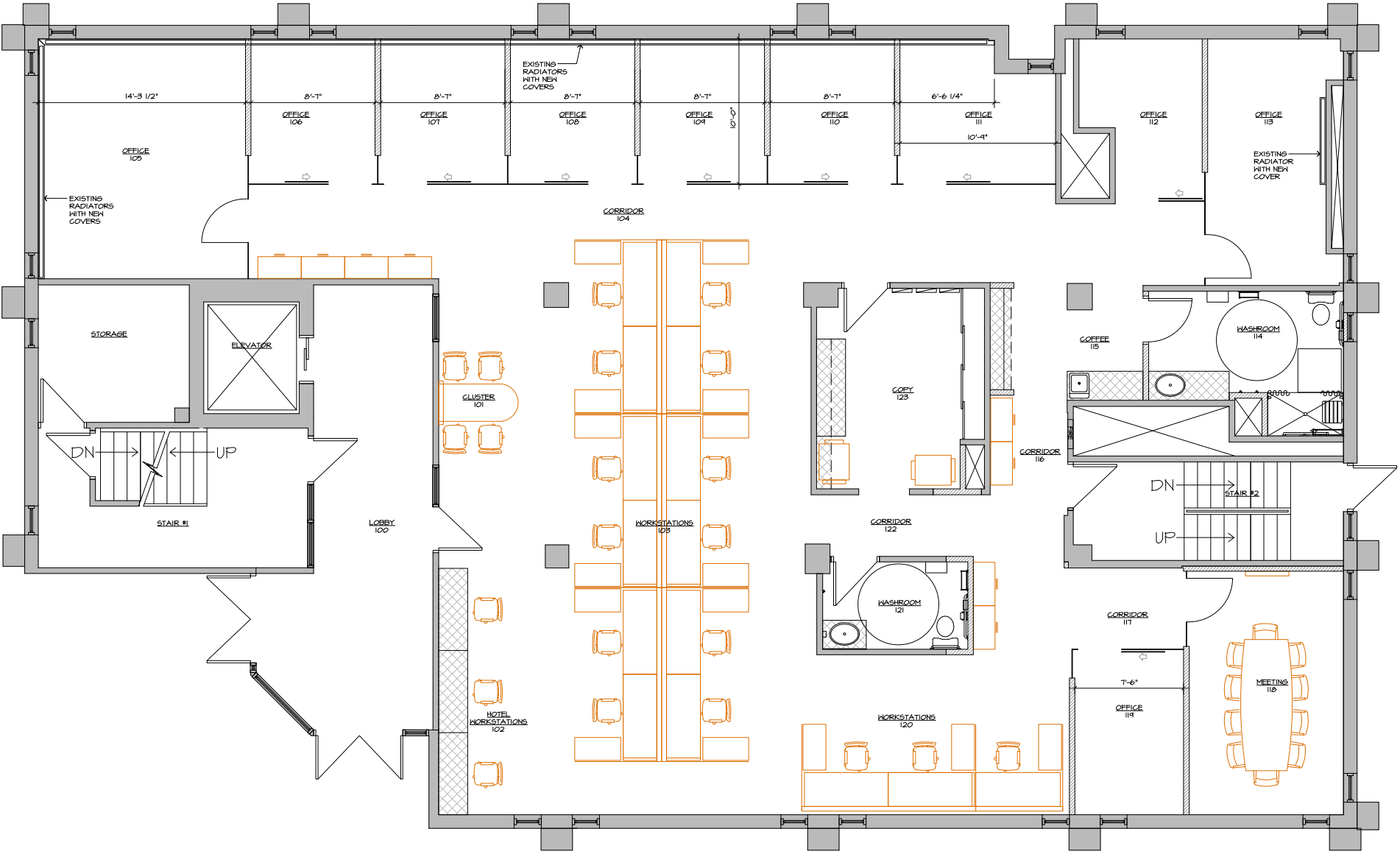






MAIN LEVEL FLOOR PLAN

(+/-) 3,954 SF



CONTACT

Ryan Munt
Executive Vice President

Ryan Munt Personal Real Estate Corporation

T 204 928 5015

C 204 298 1905

ryan.munt@cwstevenson.ca



55 DONALD



**CUSHMAN &
WAKEFIELD**
Winnipeg

Stevenson

Independently Owned and Operated / A Member of the Cushman & Wakefield Alliance ©2024 Cushman & Wakefield. All rights reserved. The information contained in this communication is strictly confidential. This information has been obtained from sources believed to be reliable but has not been verified. NO WARRANTY OR REPRESENTATION, EXPRESS OR IMPLIED, IS MADE AS TO THE CONDITION OF THE PROPERTY (OR PROPERTIES) REFERENCED HEREIN OR AS TO THE ACCURACY OR COMPLETENESS OF THE INFORMATION CONTAINED HEREIN, AND SAME IS SUBMITTED SUBJECT TO ERRORS, OMISSIONS, CHANGE OF PRICE, RENTAL OR OTHER CONDITIONS, WITHDRAWAL WITHOUT NOTICE, AND TO ANY SPECIAL LISTING CONDITIONS IMPOSED BY THE PROPERTY OWNER(S). ANY PROJECTIONS, OPINIONS OR ESTIMATES ARE SUBJECT TO UNCERTAINTY AND DO NOT SIGNIFY CURRENT OR FUTURE PROPERTY PERFORMANCE.