



ARES
INDUSTRIAL
MANAGEMENT

AVAILABLE NOW

125 STONEWOOD

125 STONEWOOD ROAD, YORK, PA, 17402

FOR LEASE | 221,621 SQ FT | Class A Warehouse Facility



GERRY BLINEBURY

Executive Vice Chair

+1 717 231 7291

gerry.blinebury@cushwake.com

COLLIN POTTER

Senior Director

+1 717 231 7460

collin.potter@cushwake.com

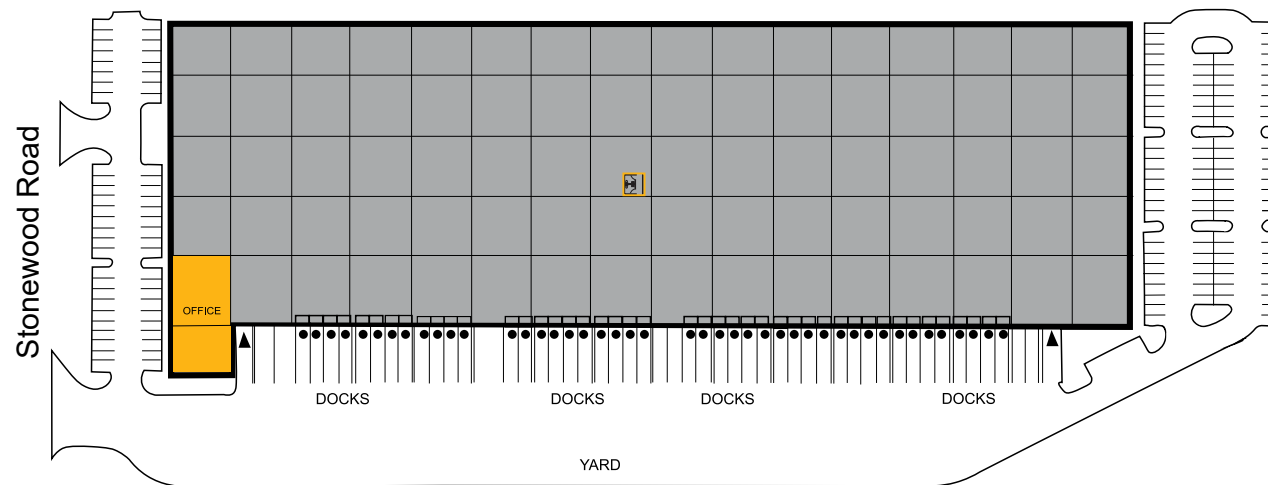
OWNED BY






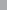

ARES
INDUSTRIAL
MANAGEMENT

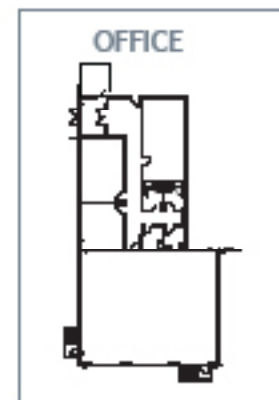
Property FEATURES

- ±221,621 SF Available
- ±4,500 SF Office Space
- ±45 Dock Doors (fully equipped with levelers, bumpers, seals, locks and dock lights)
- 2 Drive-in Doors
- 32' Clear Height
- ±155 Auto Parking Spaces
- 834' x 263' Building Dimensions
- 52' x 52' Column Spacing with 60' Speed Bays
- Secured truck court with guard shack
- Battery Charging (19 Receptacles)
- ESFR
- LED Lighting



LEGEND

-  Office
-  Warehouse
-  Drive Through Doors
-  Dock Doors
-  Bathroom



ARES
INDUSTRIAL
MANAGEMENT

Location HIGHLIGHTS

- Minutes from I-83 and US Rt. 30
- 24 Minutes from I-76 PA Turnpike
- 32 Minutes from I-81
- 55 Miles to Baltimore, MD
- 95 Miles to Washington, DC

- High demand Class A Warehouse in the York County market
- Close proximity to one of the nation's largest concentration of intermodal yards
- Accessible to Central PA's premier labor base



ARES
INDUSTRIAL
MANAGEMENT

ABOUT ARES MANAGEMENT CORPORATION

Ares Management Corporation (NYSE: ARES) is a leading global alternative investment manager offering clients complementary primary and secondary investment solutions across the credit, private equity, real estate and infrastructure asset classes. We seek to provide flexible capital to support businesses and create value for our stakeholders and within our communities. By collaborating across our investment groups, we aim to generate consistent and attractive investment returns throughout market cycles. For more information, please visit www.aresmgmt.com.



GERRY BLINEBURY

Executive Vice Chair
+1 717 231 7291
gerry.blinebury@cushwake.com

COLLIN POTTER

Senior Director
+1 717 231 7460
collin.potter@cushwake.com

OWNED BY



ARES
INDUSTRIAL
MANAGEMENT