

# 600

# GRIFFIN BROOK DRIVE

METHUEN | MA

AVAILABLE  
47,850 SF

600 GRIFFIN  
BROOK DRIVE

## 600 GRIFFIN BROOK DRIVE METHUEN | MA

FOR LEASE 47,850 SF AVAILABLE  
WAREHOUSE/DISTRIBUTION SPACE AVAILABLE





BUILDING  
OVERVIEW

AVAILABLE SF  
47,850 SF

BUILDING TYPE  
Warehouse




CLEAR HEIGHT  
36'

PROPERTY  
SPECIFICATIONS

600 GRIFFIN BROOK DRIVE IS A 95,700 SF WAREHOUSE / DISTRIBUTION BUILDING WITH 36' CLEAR HEIGHT, 3,000 AMPS OF POWER, AND 24 LOADING DOCKS.


SITE DESCRIPTION

 SITE AREA	14.4 ACRES
 CAR PARKING	(80) SPACES - INCLUDING (4) ACCESSIBLE SPACES
 CAR PARKING RATIO	1 SPACE / 1,000 SF

 TRAILER PARKING	(9) SPACES
 CONSTRUCTION TYPE	II-B
 POWER	3,000A AT 277/480V

BUILDING DESCRIPTION

 BUILDING SIZE	95,700 SF
 BUILDING TYPE	WAREHOUSE
 CLEAR HEIGHT	36'
 DIMENSIONS	220' X 435'
 COLUMN SPACING	54' O.C.
 OVERHEAD DOCK DOORS	(24) 11 AVAILABLE

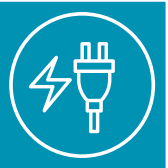
 SLAB	8" UNREINFORCED
 TRUCK COURT	HEAVY-DUTY ASPHALT PAVING
 TRUCK APRON	FULL DEPTH CONCRETE
 ROOF TYPE	TPO MECHANICALLY FASTENED
 FIRE SPRINKLERS	ESFR SYSTEM WITH DIESEL FIRE PUMP
 CLERESTORY WINDOWS	(12)
 LIGHTING	TEMPORARY LED



CLEAR HEIGHT: 36'



COLUMN SPACING: 54' O.C.



POWER: 3,000 AMPS, 277/480V



BUILDING DIMENSIONS: 230 DEEP X 435 WIDE



24 LOADING DOCKS



TOWN WATER & SEWER



9 TRAILER PARKING SPOTS



80 PASSENGER PARKING SPOTS

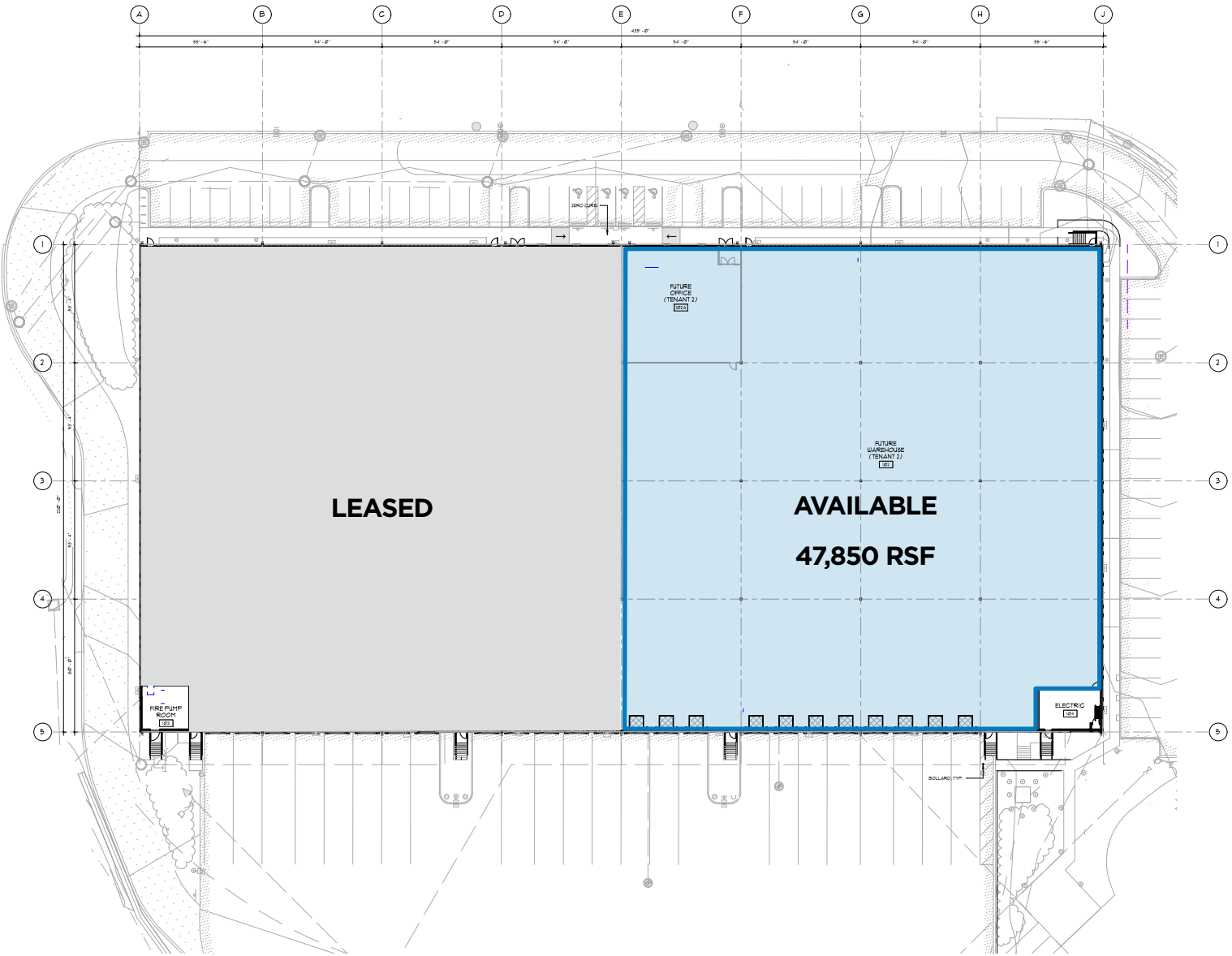
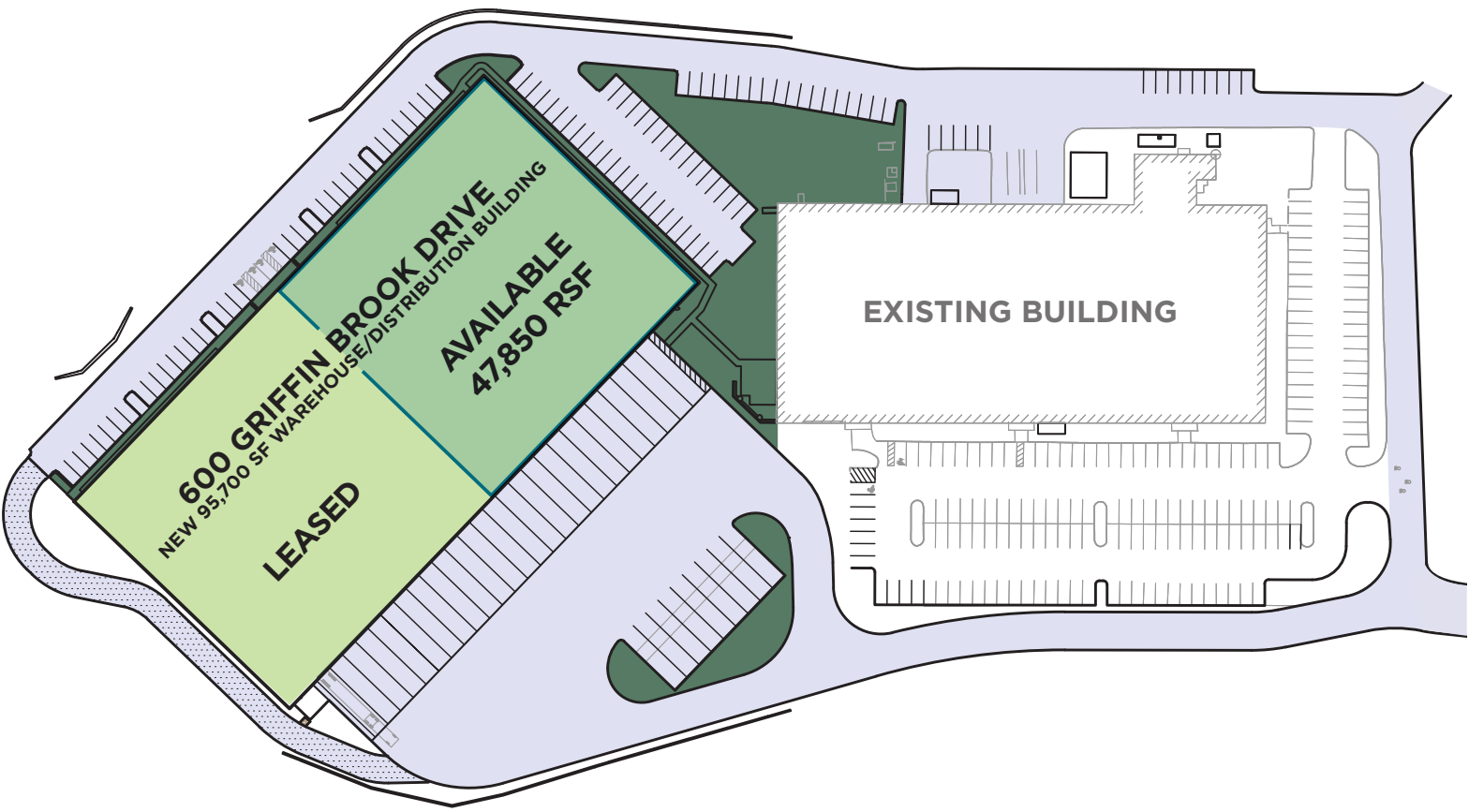


ELECTRIC HEAT PUMPS



SITE  
PLAN

AVAILABILITY  
47,850 SF

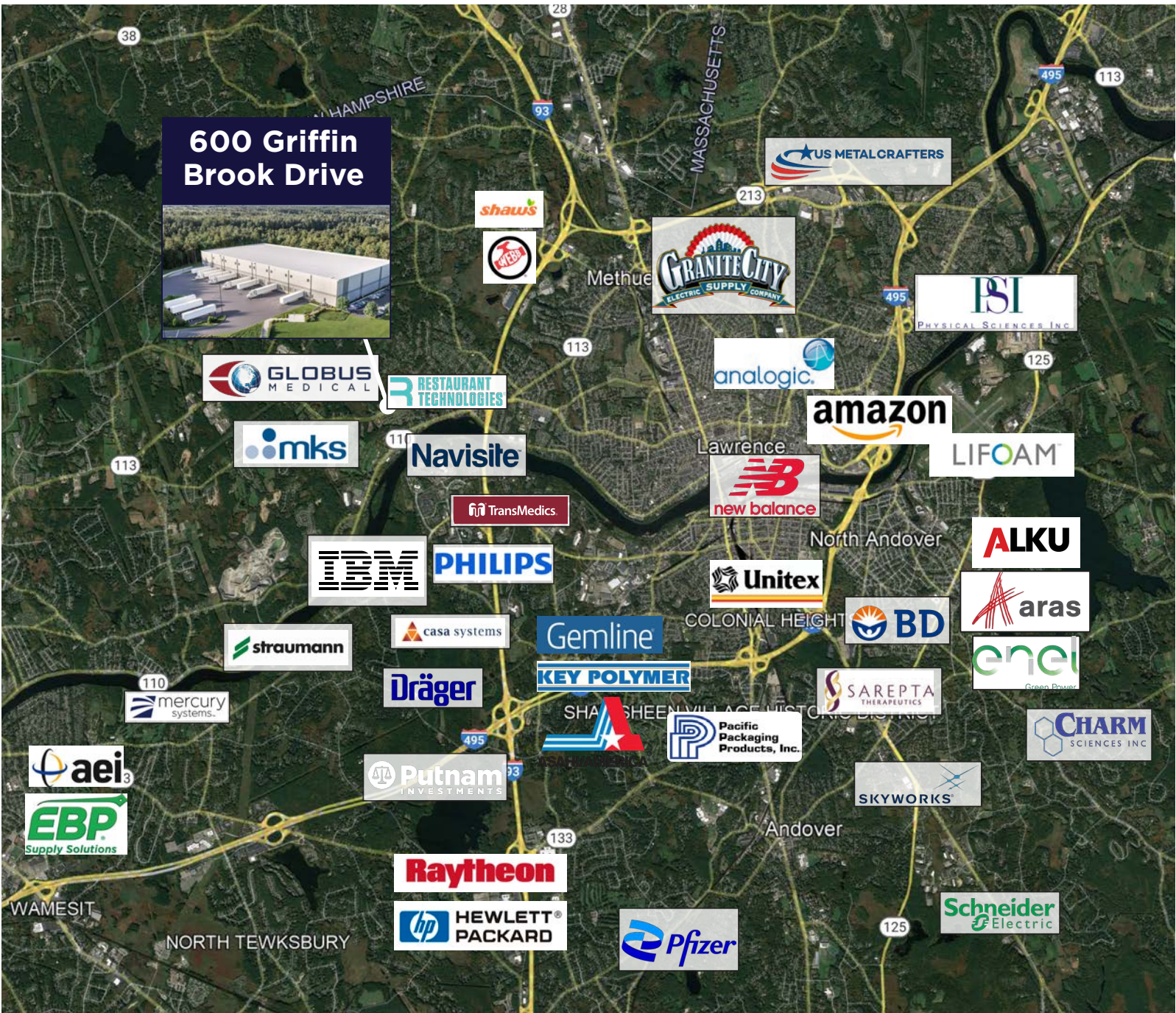
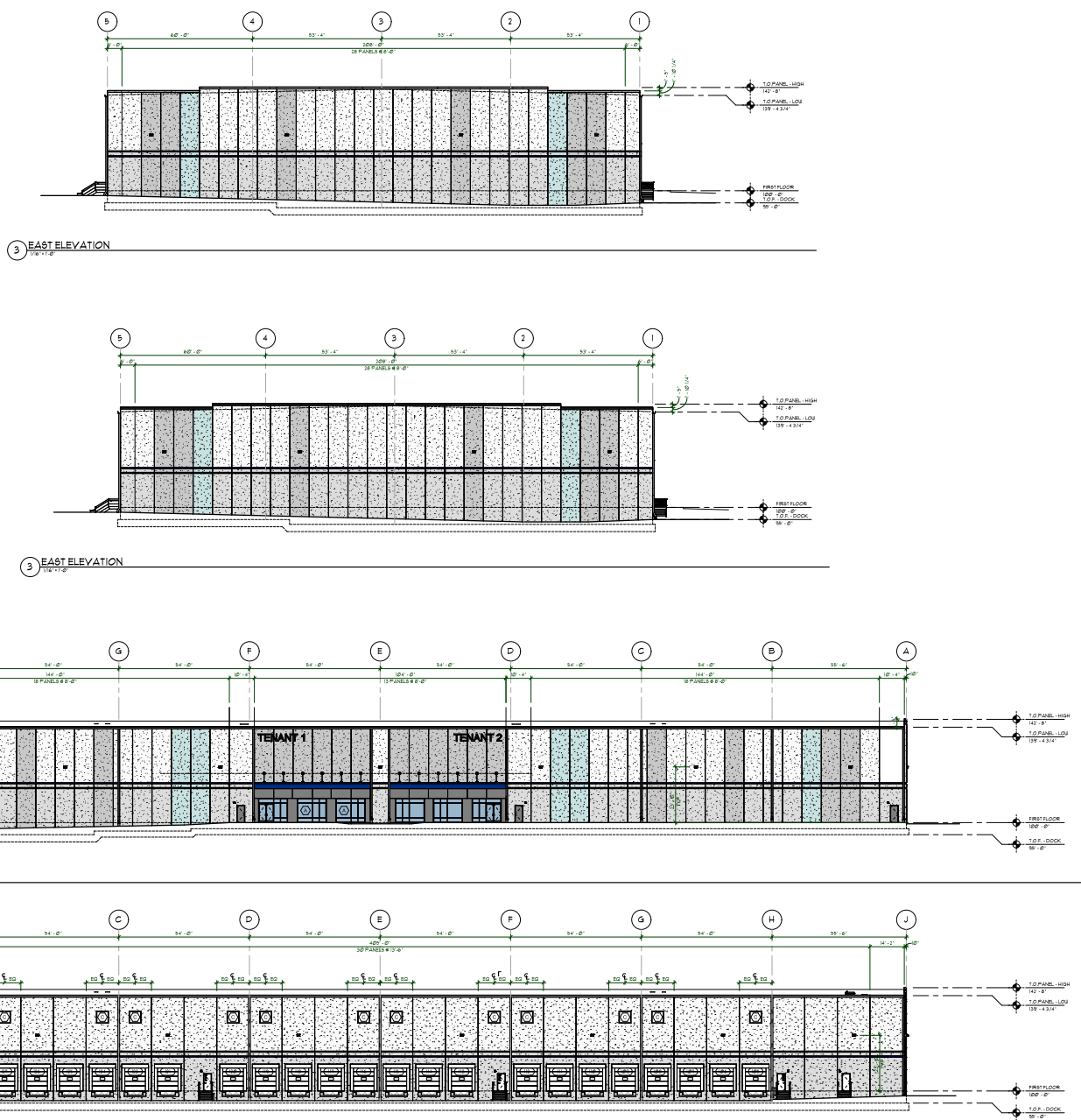




# BUILDING ELEVATIONS

# CORPORATE NEIGHBORS

## Elevation





# 600

# GRIFFIN BROOK DRIVE

METHUEN | MA

**DACON**



**RIDGE**  
REAL ESTATE PARTNERS



**CUSHMAN &  
WAKEFIELD**

+1 617 219 7699

©2026 Cushman & Wakefield. All rights reserved. The information contained in this communication is strictly confidential. This information has been obtained from sources believed to be reliable but has not been verified. NO WARRANTY OR REPRESENTATION, EXPRESS OR IMPLIED, IS MADE AS TO THE CONDITION OF THE PROPERTY (OR PROPERTIES) REFERENCED HEREIN OR AS TO THE ACCURACY OR COMPLETENESS OF THE INFORMATION CONTAINED HEREIN, AND SAME IS SUBMITTED SUBJECT TO ERRORS, OMISSIONS, CHANGE OF PRICE, RENTAL OR OTHER CONDITIONS, WITHDRAWAL WITHOUT NOTICE, AND TO ANY SPECIAL LISTING CONDITIONS IMPOSED BY THE PROPERTY OWNER(S). ANY PROJECTIONS, OPINIONS OR ESTIMATES ARE SUBJECT TO UNCERTAINTY AND DO NOT SIGNIFY CURRENT OR FUTURE PROPERTY PERFORMANCE.