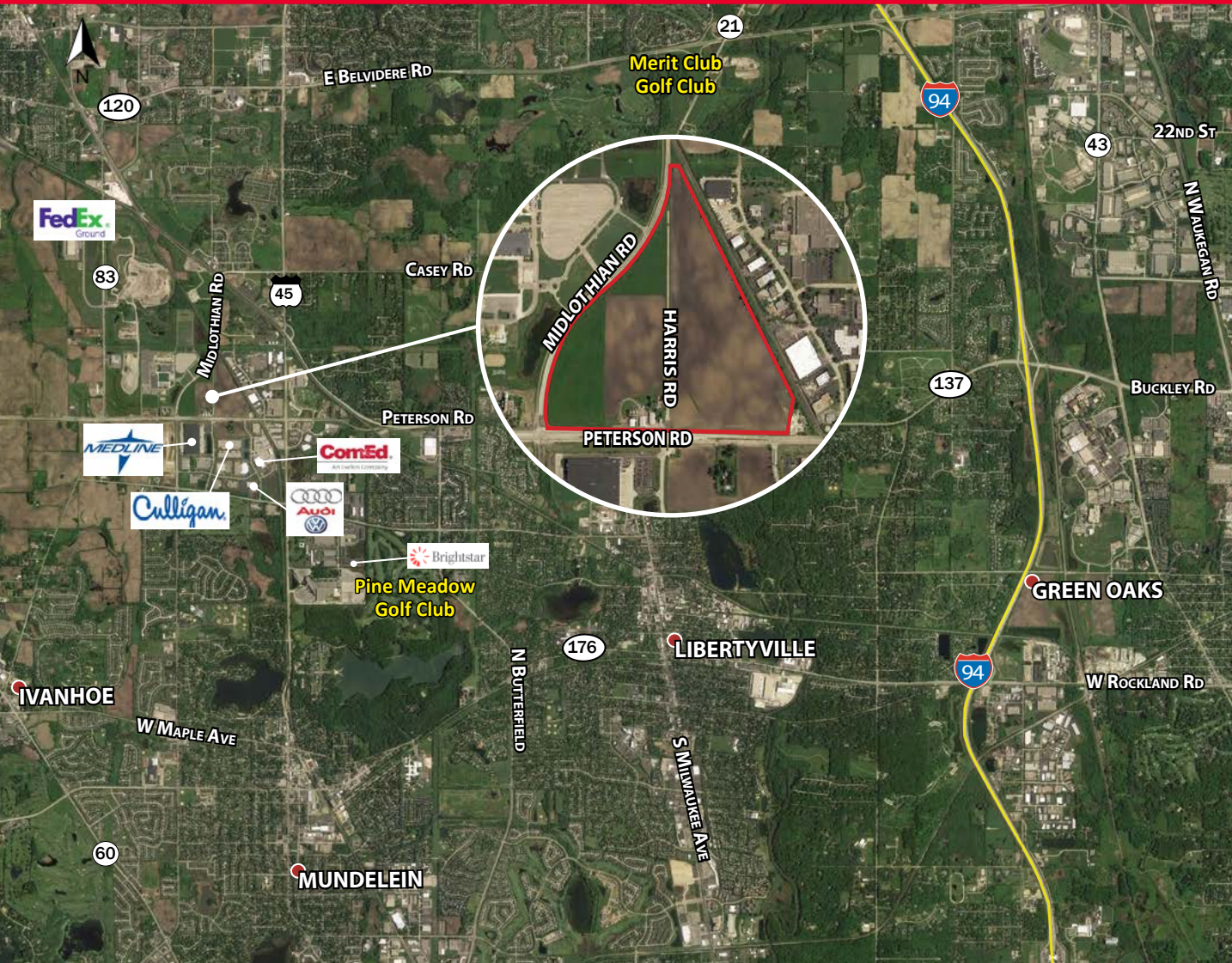


LIBERTYVILLE BUSINESS PARK

Libertyville, IL

Available | 5 – 82 Acres



Property Highlights:

- Up to 82 acres available
- Direct access to full interchange at I-94 & Route 137 (Buckley Road)
- Low Lake County taxes
- Corporate neighbors include Medline, Culligan, USG, and Brightstar
- Available for BTS or Outright Purchase
- Suitable for industrial, commercial, and retail
- Pricing subject to offer

**Last Remaining Lake County
In-Fill Site For Development
or Built-To-Suit**

For more information, please contact:

Keith Puritz, SIOR
Executive Managing Director
847 720 1366
kieth.puritz@cushwake.com

Brett Kroner, SIOR
Executive Managing Director
847 720 1367
brett.kroner@cushwake.com

Eric Fischer
Executive Director
847 720 1369
eric.fischer@cushwake.com

Marc Samuels
Director
847 720 1368
marc.samuels@cushwake.com

Conceptual Development

TOTAL SITE AREA (±83.84 AC.) ±3,652,070 S.F.

TOTAL DETENTION SITE (±16.34 AC.) ±711,771 S.F.

SITES

SITE AREA A (±7.38 AC.) 321,312 S.F.

BUILDING 137,302 S.F.
TRUCK DOCKS 25 DOCKS
DRIVE-IN DOORS 3 DOORS
CAR PARKING 130 STALLS

SITE AREA B (±11.85 AC.) 516,186 S.F.

BUILDING 183,120 S.F.
TRUCK DOCKS 58 DOCKS
DRIVE-IN DOORS 2 DOORS
TRAILERS STALLS 33 STALLS
CAR PARKING 208 STALLS

SITE AREA C (±15.09 AC.) 657,320 S.F.

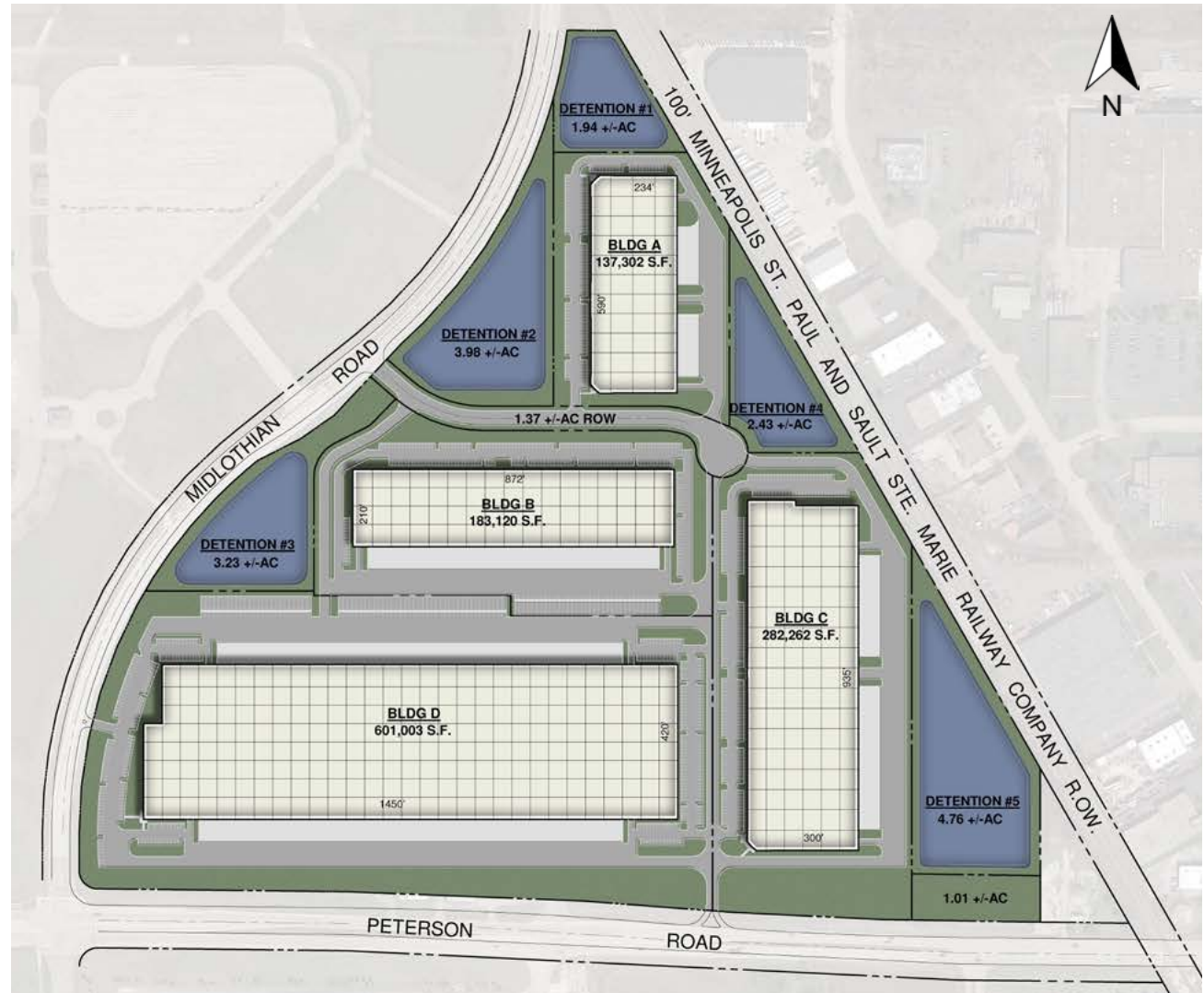
BUILDING 282,262 S.F.
TRUCK DOCKS 48 DOCKS
DRIVE-IN DOORS 3 DOORS
CAR PARKING 202 STALLS

SITE AREA D (±30.80 AC.) 1,341,648 S.F.

BUILDING 601,003 S.F.
TRUCK DOCKS 164 DOCKS
DRIVE-IN DOORS 4 DOORS
TRAILERS STALLS 63 STALLS
CAR PARKING 287 STALLS

OTHER SITE AREAS (±2.38 AC.) 103,673 S.F.

Site can accommodate a single building of up to 800,000 SF.



For more information, please contact:

Keith Puritz, SIOR
Executive Managing Director
847 720 1366
kieth.puritz@cushwake.com

Brett Kroner, SIOR
Executive Managing Director
847 720 1367
brett.kroner@cushwake.com

Eric Fischer
Executive Director
847 720 1369
eric.fischer@cushwake.com

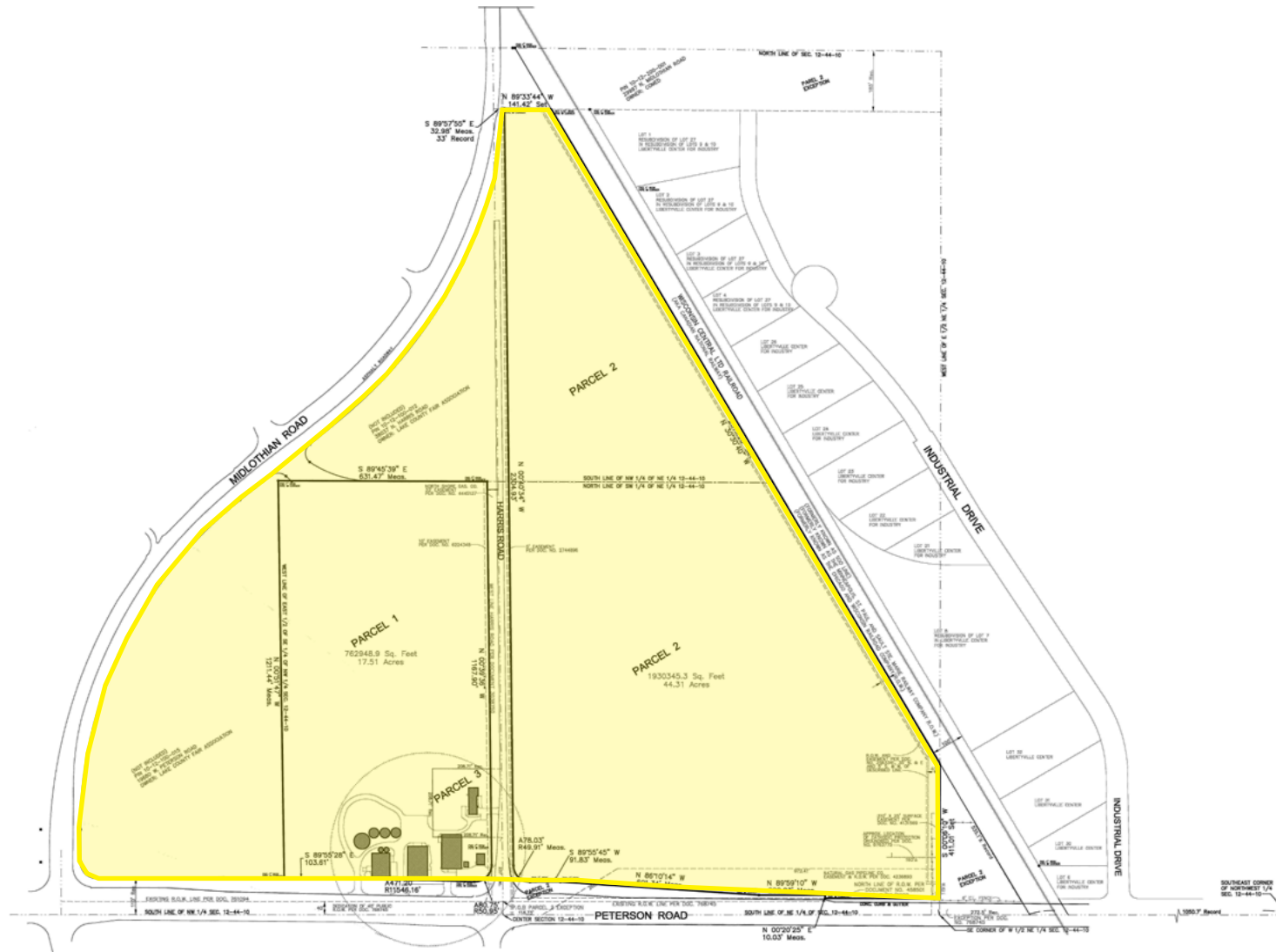
Marc Samuels
Director
847 720 1368
marc.samuels@cushwake.com

LIBERTYVILLE BUSINESS PARK

Libertyville, IL

Available | 5 - 82 Acres

Survey



For more information, please contact:

Keith Puritz, SIOR
Executive Managing Director
847 720 1366
kieth.puritz@cushwake.com

Brett Kroner, SIOR
Executive Managing Director
847 720 1367
brett.kroner@cushwake.com

Eric Fischer
Executive Director
847 720 1369
eric.fischer@cushwake.com

Marc Samuels
Director
847 720 1368
marc.samuels@cushwake.com