

FOR LEASE

# 720 E. Highland Road

Macedonia, Ohio 44056



Freestanding 146,250 square foot industrial complex with 17,904 square feet of office space and 128,346 square feet of warehouse / manufacturing space on 6.35 acres. 56,000 SF minimum divisibility. Eight (8) Drive-In Doors - 10'x12'; 10'x18'; 12'x14'; 14'x18' and Fourteen (14) Truck Docks - Six (6) Internal and Eight (8) External. Manufacturing amenities including shop restroom/locker rooms, air line distribution, 2-ton and 3-ton crane, 7000A / 480V / 3P power with buss duct distribution throughout.





# PROPERTY FEATURES



**145,198 SF**

TOTAL BUILDING SIZE

**6.35 ACRES**

TOTAL SITE SIZE

**56,000 SF**

MINIMUM DIVISIBILITY

**127,778 SF**

WAREHOUSE SIZE

**17,420 SF**

OFFICE SIZE

**\$6.75/SF NNN**

LEASE RATE

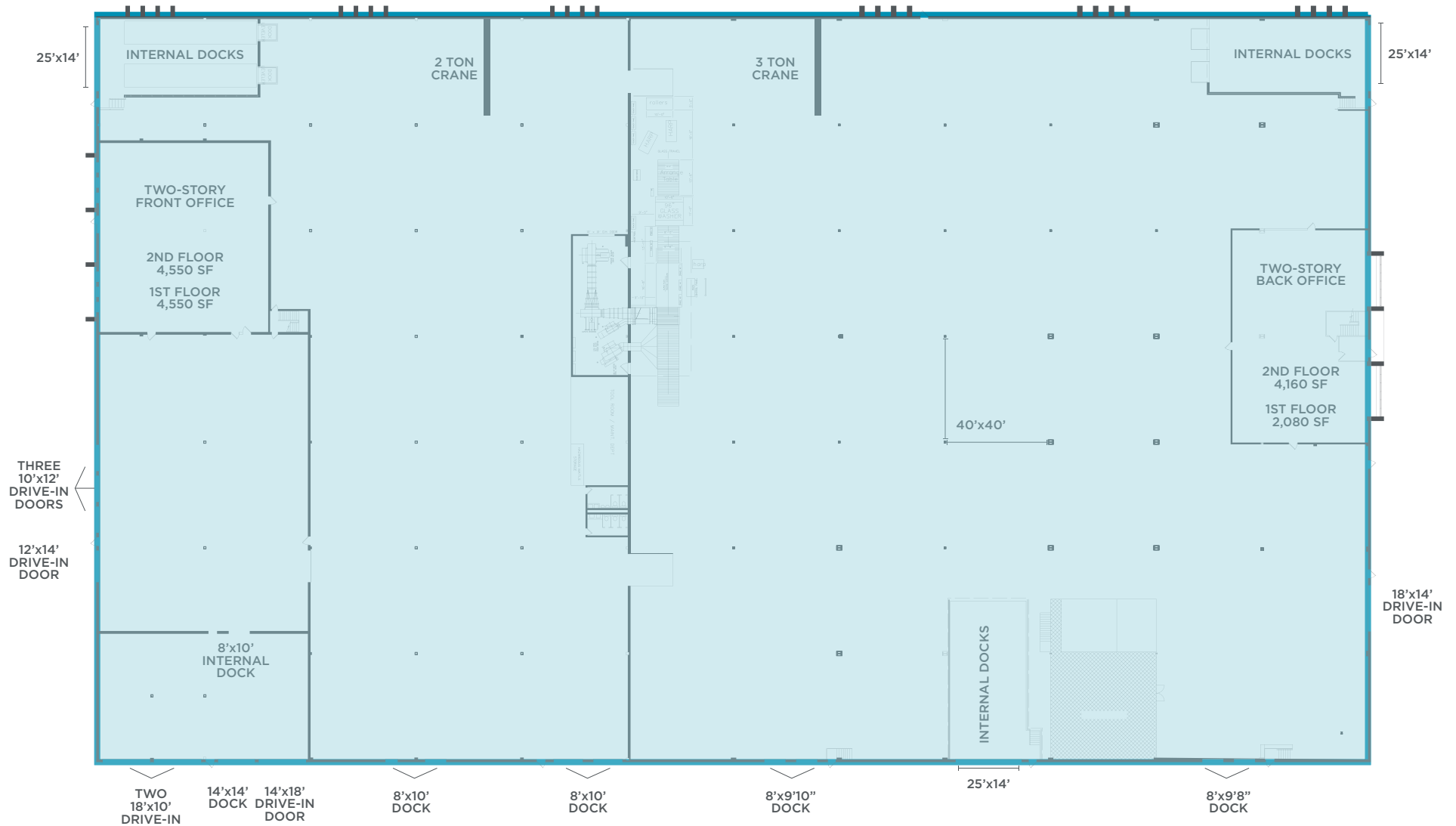
## COMMENTS

- Freestanding 146,250 square foot industrial complex with 17,904 square feet of office space and 128,346 square feet of warehouse / manufacturing space on 6.35 acres
- Minimum divisibility of 56,000 SF
- Eight (8) drive-in doors - 10'x12'; 10'x18'; 12'x14'; 14'x18'
- Fourteen (14) truck docks - six (6) internal and eight (8) external
- Manufacturing amenities including shop restroom/locker rooms, air line distribution, 2-ton and 3-ton crane, 7000A / 480V / 3P power with buss duct distribution throughout

## PROPERTY SPECIFICATIONS

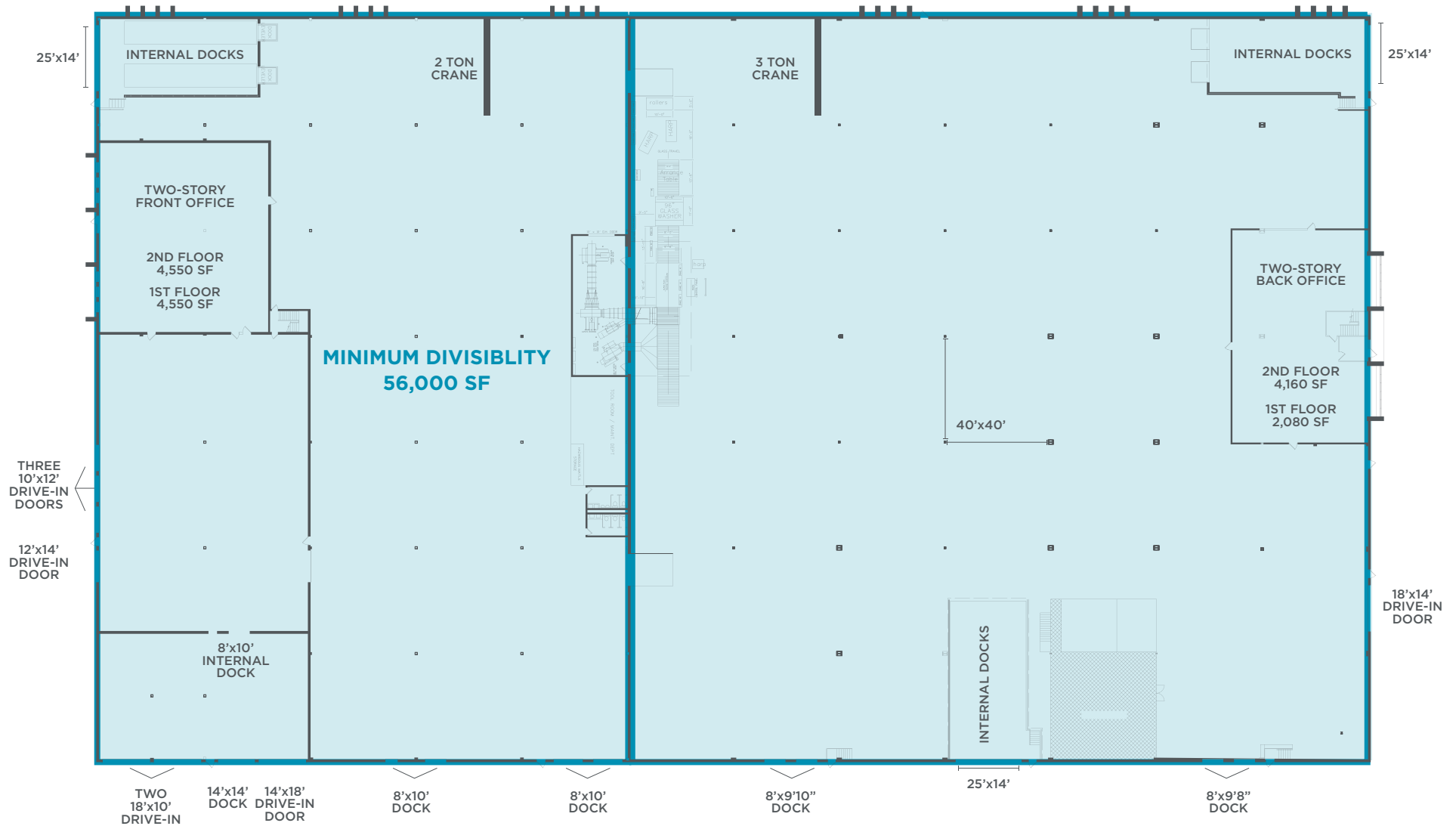
CONSTRUCTED:	1982
CONSTRUCTION:	Block/Siding
ROOF:	Built-up on Metal Deck
LIGHTING:	Fluorescent
HEAT:	Gas/Radiant Tube
AC:	HVAC - Office Only
SPRINKLER	100% Wet
CLEAR HEIGHT:	19'6"
COLUMN SPACING:	40' x 40'
DOCKS:	Two (2) - 2-ton and 3-ton
DOCKS:	Fourteen (14) - six (6) internal and eight (8) external
DRIVE-IN DOORS:	Eight (8) - 10'x12'; 10'x18'; 12'x14'; 14'x18'
PARKING:	Approximately 100 spaces
POWER:	7000A / 480V / 3P
ZONING:	GI - General Industrial District

# FLOOR PLAN



**Total Building Size**  
**145,198 SF**

# FLOOR PLAN



**Total Building Size**  
**145,198 SF**



# AERIAL PHOTOS



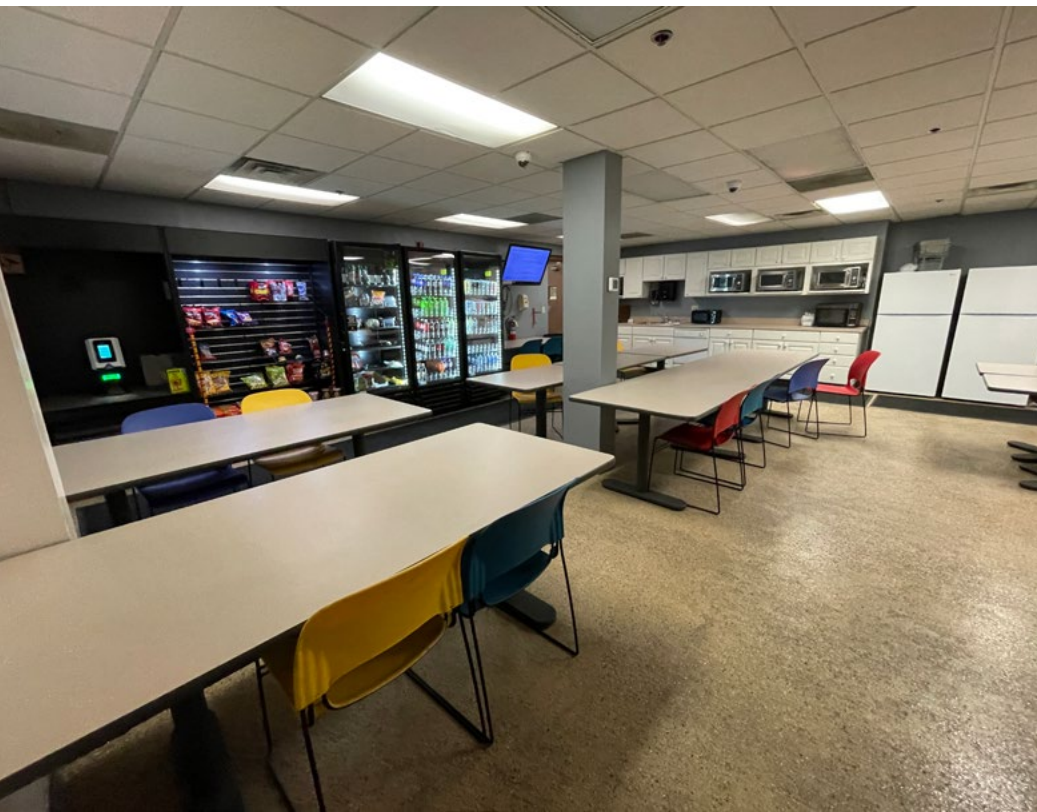


# EXTERIOR PHOTOS



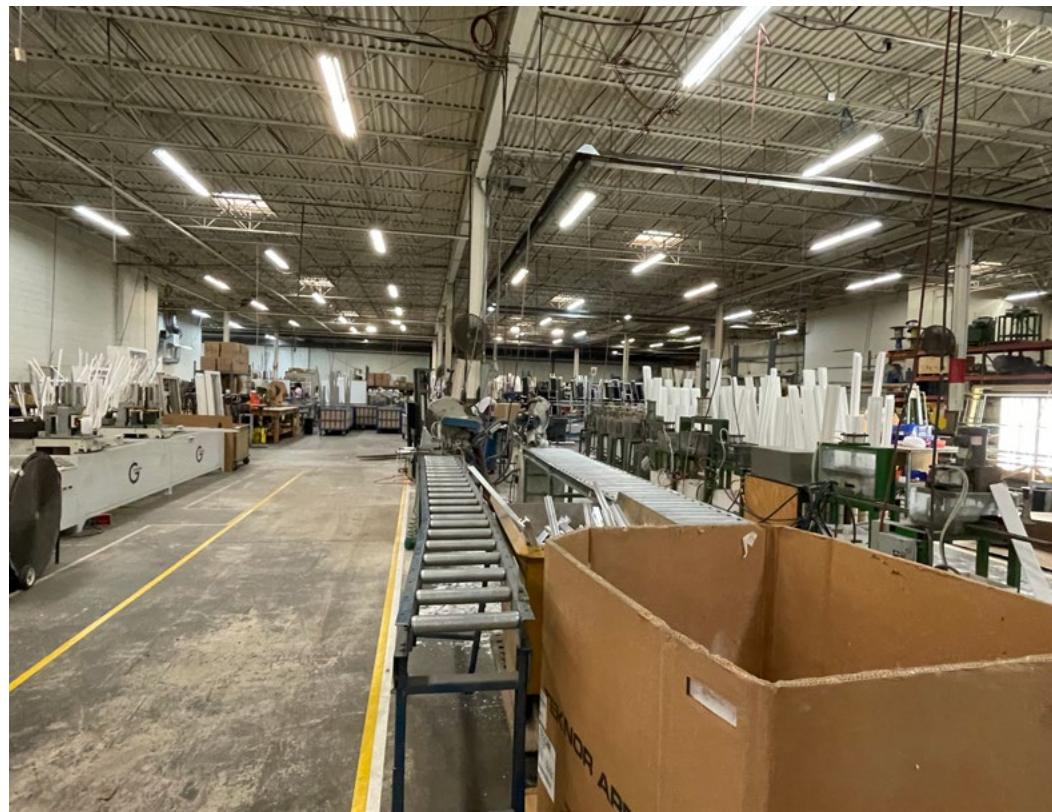


# OFFICE PHOTOS



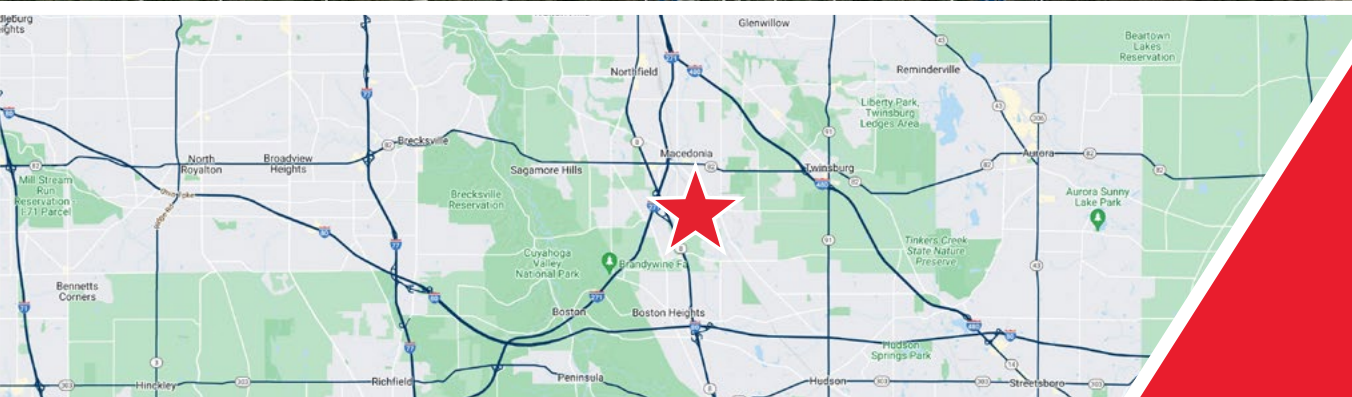
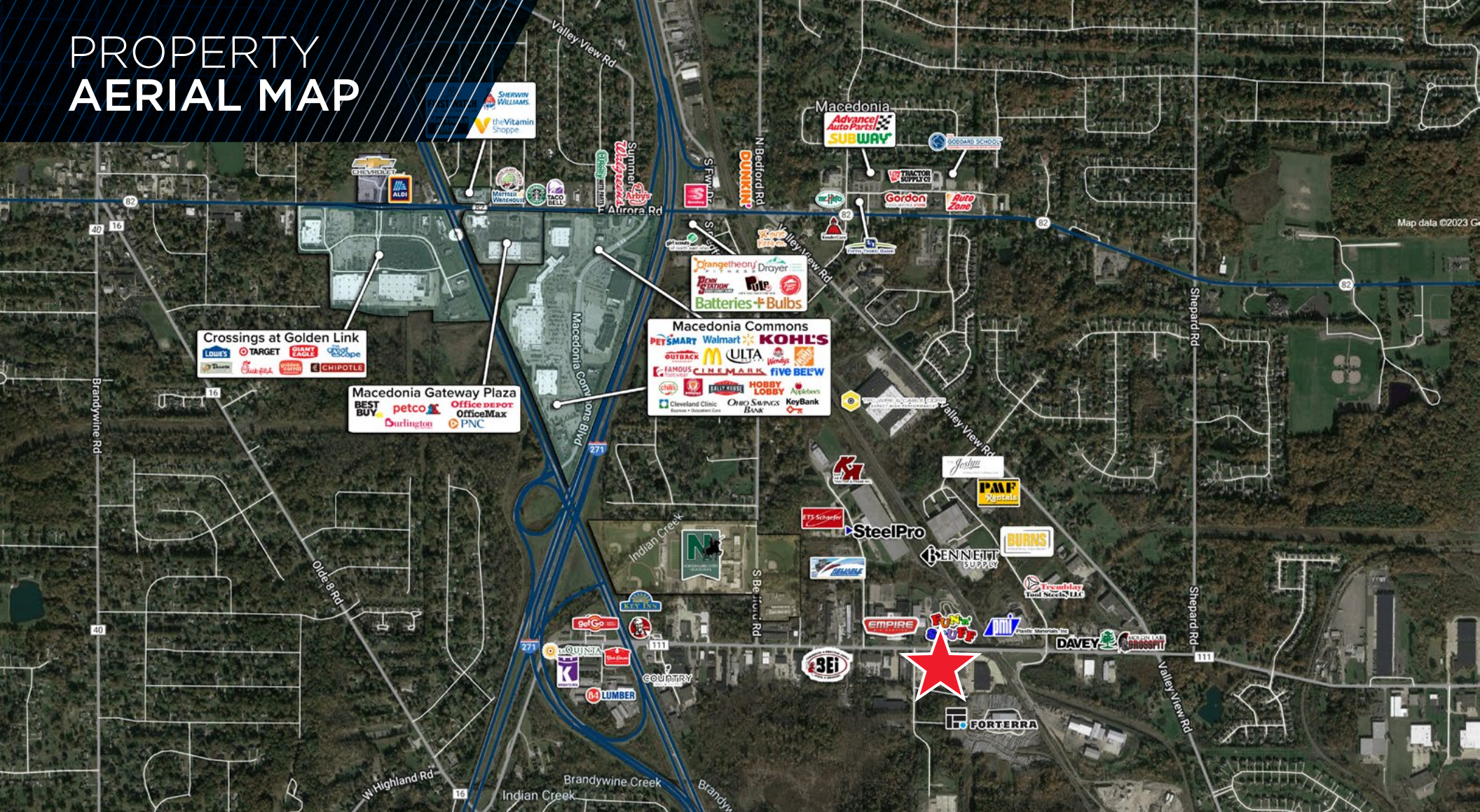


# WAREHOUSE PHOTOS





# PROPERTY AERIAL MAP



Easy access  
to I-271 & I-480





**GEORGE J. POFOK, CCIM, SIOR**  
Principal  
+1 216 525 1469  
gpofok@crescorealestate.com

**ELIOT KIJEWski, SIOR**  
Principal  
+1 216 525 1487  
ekijewski@crescorealestate.com

**JIM KRIVANEK**  
Vice President  
+1 216 525 1498  
jkrivanek@crescorealestate.com

*Independently Owned and Operated / A Member of the Cushman & Wakefield Alliance*

Cushman & Wakefield Copyright 2024. No warranty or representation, express or implied, is made to the accuracy or completeness of the information contained herein, and same is submitted subject to errors, omissions, change of price, rental or other conditions, withdrawal without notice, and to any special listing conditions imposed by the property owner(s). As applicable, we make no representation as to the condition of the property (or properties) in question. A licensee at Cushman & Wakefield | CRESCO may have an interest in the client entity offering this property for sale.

6100 Rockside Woods Blvd, Suite 200  
Cleveland, Ohio 44131  
Main +1 216 520 1200  
**crescorealestate.com**