

360 GATE 5 ROAD



SAUSALITO, CALIFORNIA

2,960 SQUARE FEET CREATIVE OFFICE SPACE

FOR LEASE

MARINER'S LANDING | 360 GATE 5 ROAD



360 GATE 5 ROAD | SAUSALITO

PROPERTY HIGHLIGHTS

360 Gate 5 Road is located in the heart of Sausalito. Located just blocks from Highway 101. The project is walking distance from multiple restaurants and other professional services. The property is located 2 miles from the Sausalito Ferry.

- 2,960 square feet
- Creative space
- LED lighting
- HVAC - spiral ducting
- Corner with 20' clear with concrete floors
- New mezzanine office
- Outdoor space included
- New mezzanine office
- \$3.50 PSF Gross

CONTACT US

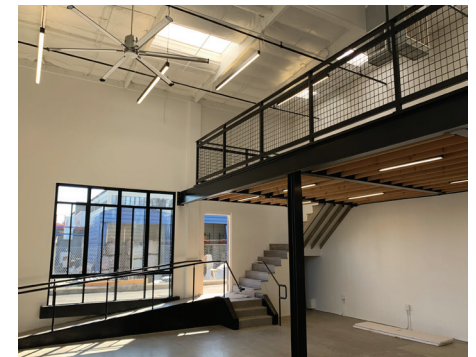
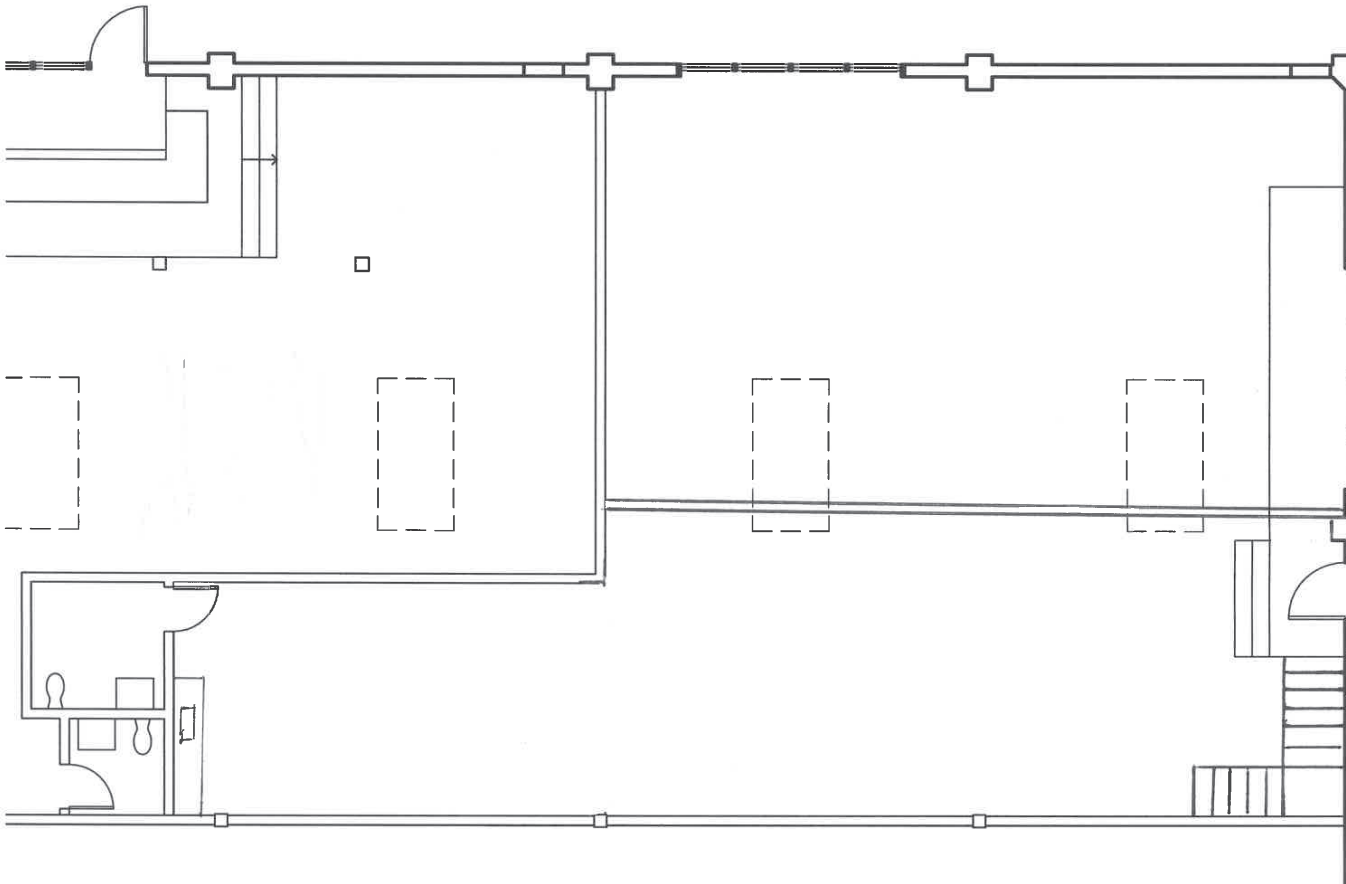
BRIAN FOSTER
Managing Director
1 415 451 2437
brian.foster@cushwake.com
LIC #01393059

TREVOR BUCK
Executive Director
1 415 451 2436
trevor.buck@cushwake.com
LIC #01255462

360 GATE 5 ROAD



SPACE AVAILABLE | \pm 2,960 RSF TOTAL



CONTACT US

BRIAN FOSTER
Managing Director
1 415 451 2437
brian.foster@cushwake.com
LIC #01393059

TREVOR BUCK
Executive Director
1 415 451 2436
trevor.buck@cushwake.com
LIC #01255462

WHY 360 GATE 5 ROAD



COMMUTING OPTIONS

FERRY STATION 1 BLOCK AWAY & BUS STOP DIRECTLY IN FRONT OF BUILDING



LUNCH & DINNER OPTIONS

OVER 15 RESTAURANTS WITHIN A 1 MILE RADIUS



HEALTH & MIND

EASY WALK TO 2 FITNESS GYMS, HIKING & BIKING TRAILS

CONTACT US

BRIAN FOSTER
Managing Director
1 415 451 2437
brian.foster@cushwake.com
LIC #01393059

TREVOR BUCK
Executive Director
1 415 451 2436
trevor.buck@cushwake.com
LIC #01255462



WHY SAUSALITO

360 GATE 5 ROAD SAUSALITO, CA

CREATIVE OFFICE SPACE
FOR LEASE
