



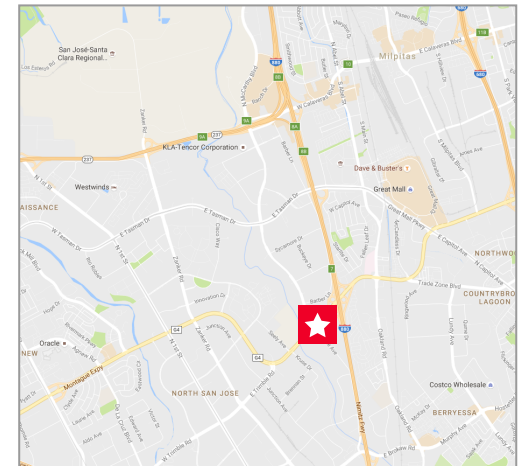
## PROPERTY HIGHLIGHTS

- Prominent Corner Location in Oak Creek Park
- Prime Office Space
- Immediate Access to Hwy 880/Montague Expressway
- Monument Signage Available
- Extensive Glass Line

- Covered Parking
- Fitness Center/Shower Facility
- Abundant Amenities Nearby
- Jogging Trail Across the Street
- ±3.5/1,000 Parking

**Mike Thompson**  
**Senior Director**  
**+1 408 572 4111**  
**mike.thompson@cushwake.com**  
LIC #00822523

300 Santana Row, Fifth Floor  
San Jose, CA 95128  
main +1 408 615 3400  
fax +1 408 615 4444  
**cushmanwakefield.com**



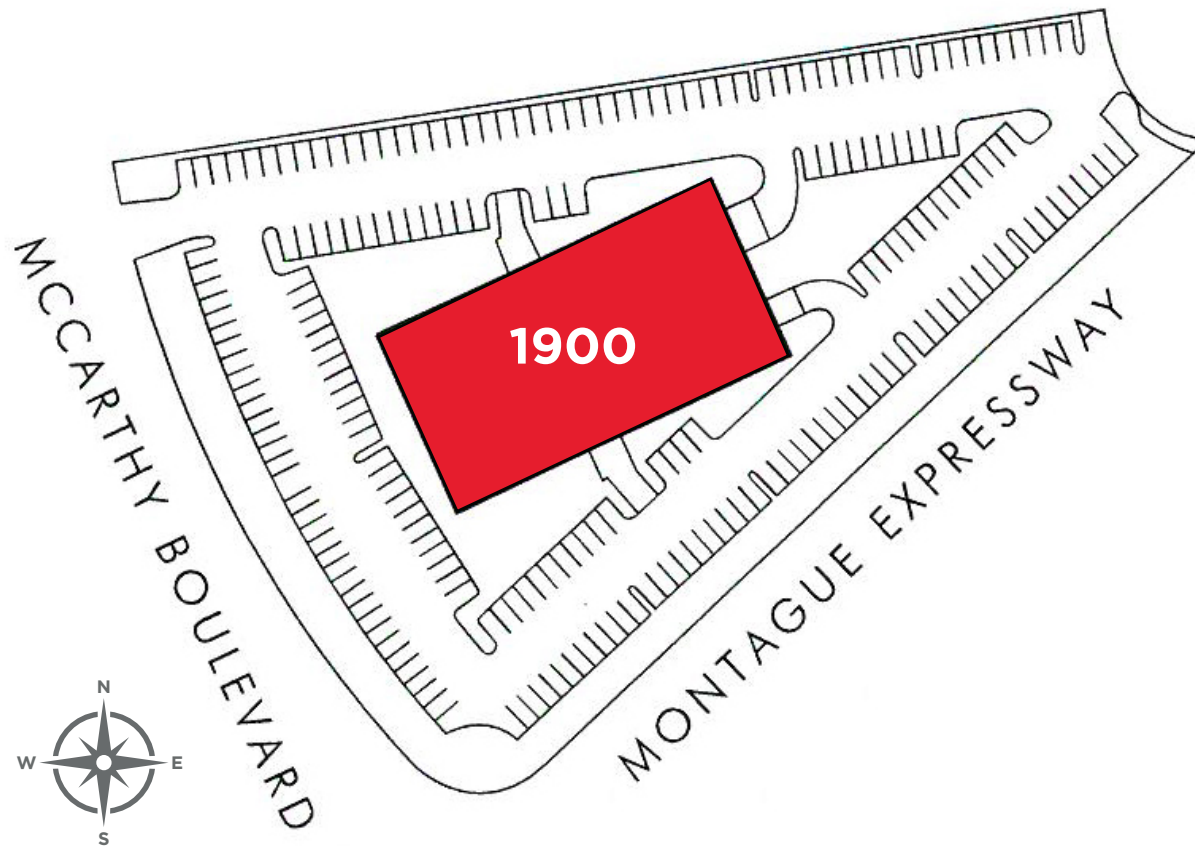
**REMODELED LOBBY**



**Mike Thompson**  
**Senior Director**  
**+1 408 572 4111**  
**mike.thompson@cushwake.com**  
LIC #00822523

300 Santana Row, Fifth Floor  
San Jose, CA 95128  
main +1 408 615 3400  
fax +1 408 615 4444  
**cushmanwakefield.com**

**SITE PLAN**



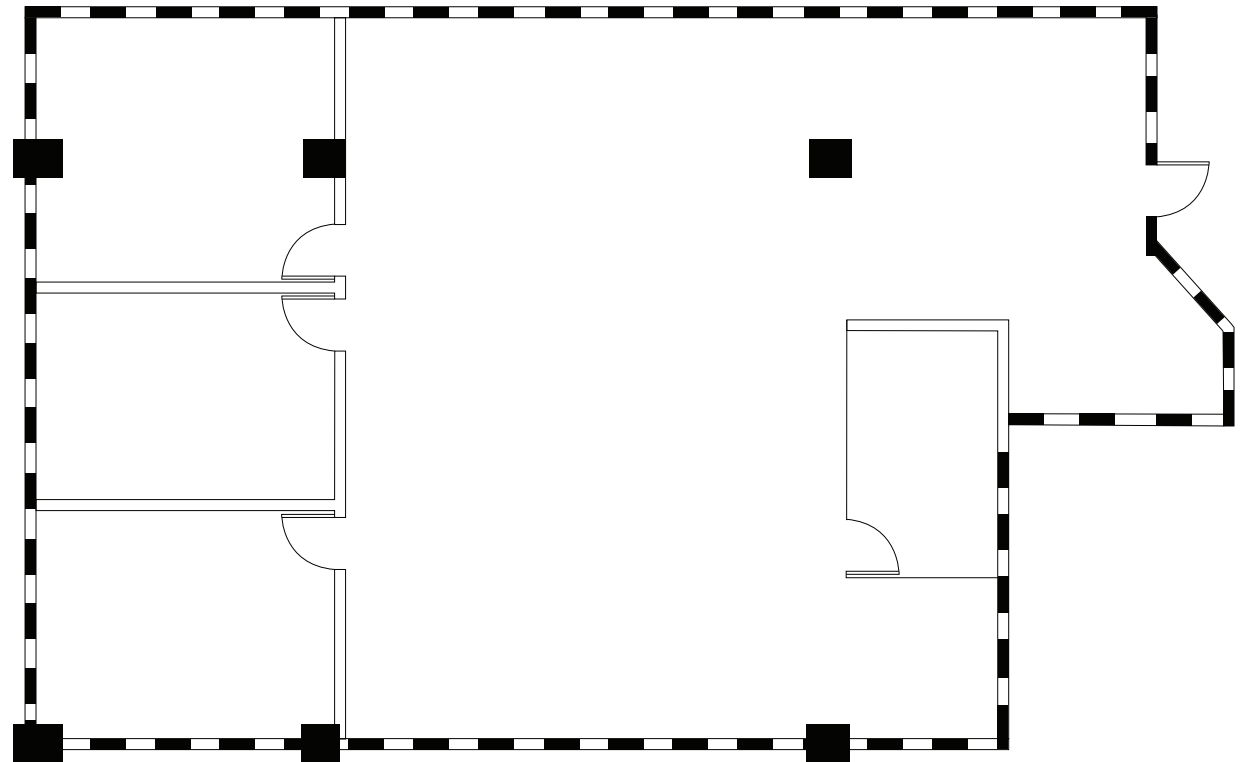
**Mike Thompson**  
Senior Director  
+1 408 572 4111  
mike.thompson@cushwake.com  
LIC #00822523

300 Santana Row, Fifth Floor  
San Jose, CA 95128  
main +1 408 615 3400  
fax +1 408 615 4444  
**cushmanwakefield.com**

## FLOOR PLAN

**Suite 205: ±2,604 SF**

AVAILABLE NOW



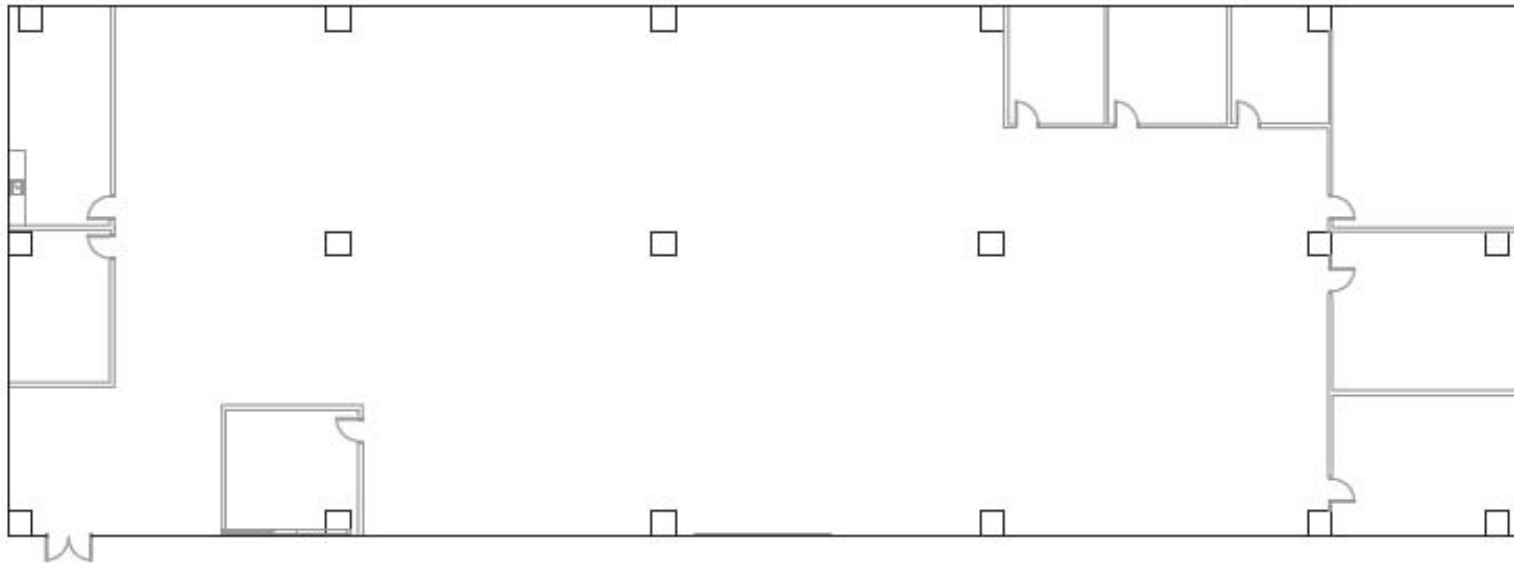
**Mike Thompson**  
Senior Director  
+1 408 572 4111  
[mike.thompson@cushwake.com](mailto:mike.thompson@cushwake.com)  
LIC #00822523

300 Santana Row, Fifth Floor  
San Jose, CA 95128  
main +1 408 615 3400  
fax +1 408 615 4444  
[cushmanwakefield.com](http://cushmanwakefield.com)

## FLOOR PLAN

**Suite 208: ±5,405 SF**

AVAILABLE NOW



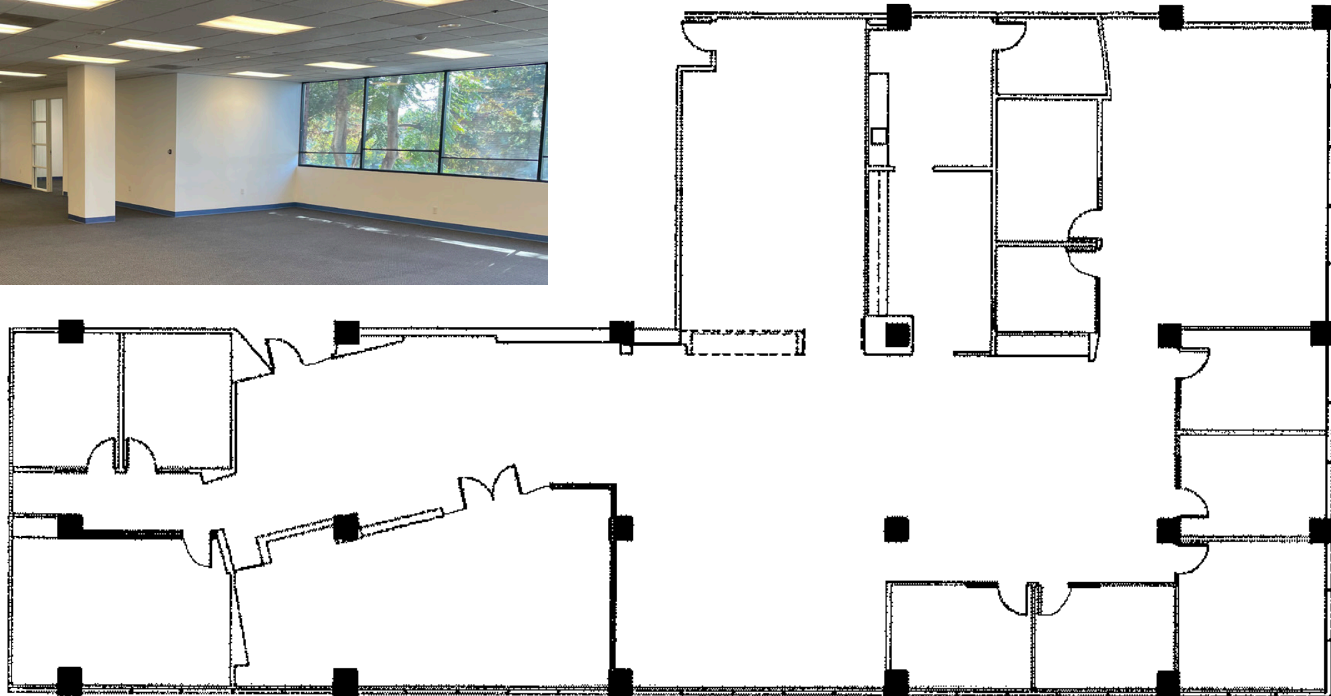
**Mike Thompson**  
Senior Director  
+1 408 572 4111  
[mike.thompson@cushwake.com](mailto:mike.thompson@cushwake.com)  
LIC #00822523

300 Santana Row, Fifth Floor  
San Jose, CA 95128  
main +1 408 615 3400  
fax +1 408 615 4444  
[cushmanwakefield.com](http://cushmanwakefield.com)

## FLOOR PLAN

**Suite 210: ±7,717 SF**

AVAILABLE NOW



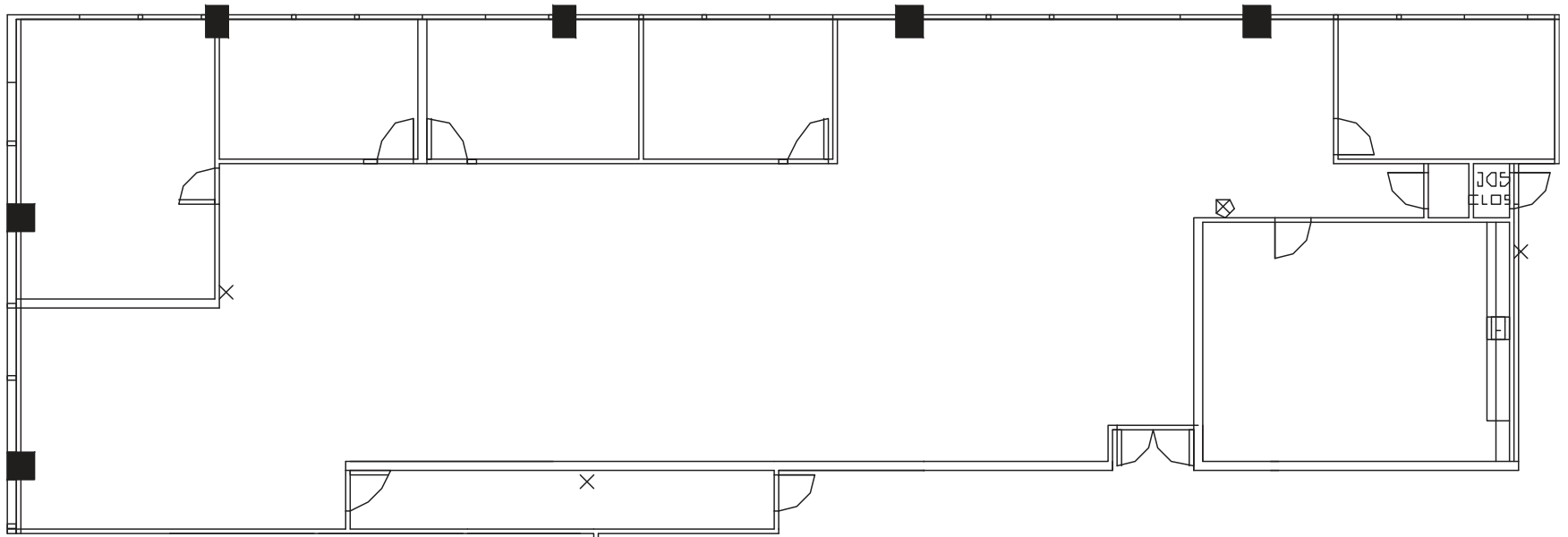
**Mike Thompson**  
Senior Director  
+1 408 572 4111  
[mike.thompson@cushwake.com](mailto:mike.thompson@cushwake.com)  
LIC #00822523

300 Santana Row, Fifth Floor  
San Jose, CA 95128  
main +1 408 615 3400  
fax +1 408 615 4444  
[cushmanwakefield.com](http://cushmanwakefield.com)

## FLOOR PLAN

**Suite 300: ±5,264 SF**

AVAILABLE NOW



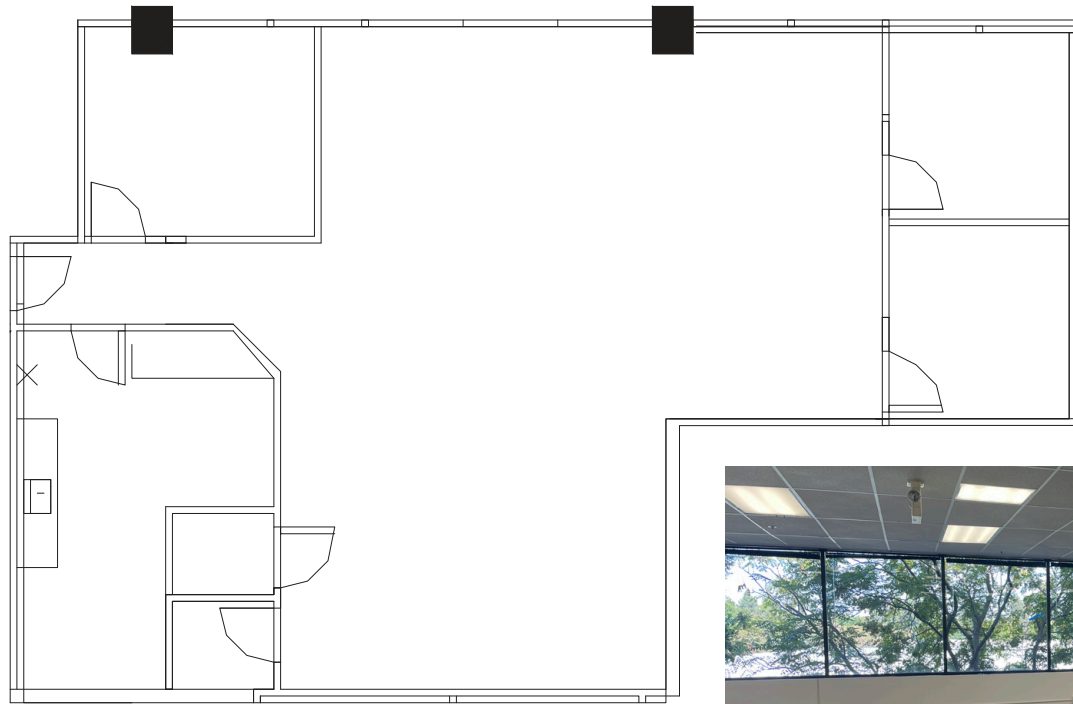
**Mike Thompson**  
Senior Director  
+1 408 572 4111  
[mike.thompson@cushwake.com](mailto:mike.thompson@cushwake.com)  
LIC #00822523

300 Santana Row, Fifth Floor  
San Jose, CA 95128  
main +1 408 615 3400  
fax +1 408 615 4444  
[cushmanwakefield.com](http://cushmanwakefield.com)

## FLOOR PLAN

**Suite 302: ±1,990 SF**

AVAILABLE NOW



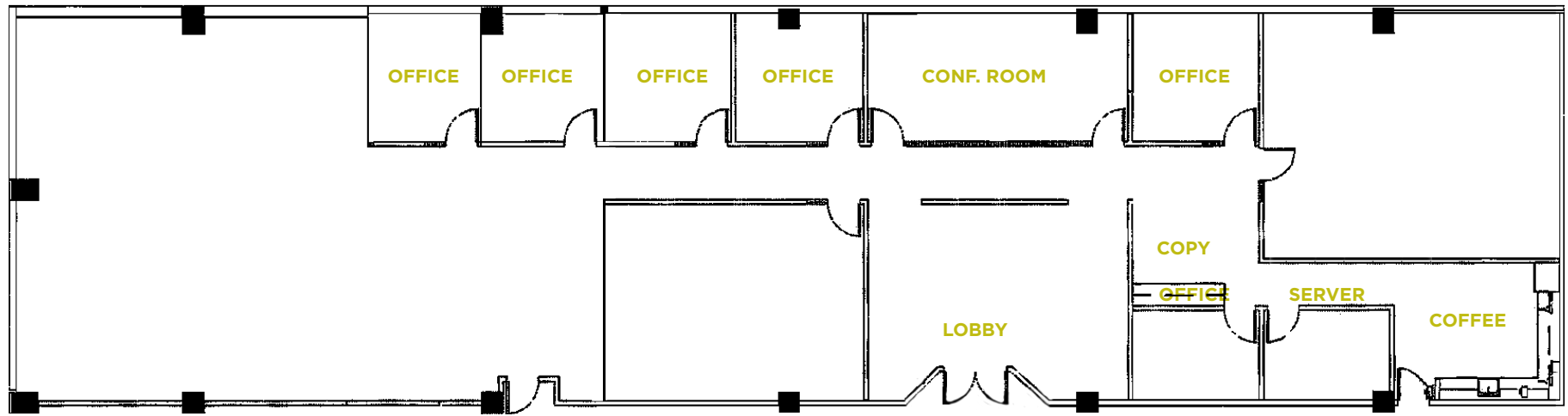
**Mike Thompson**  
Senior Director  
+1 408 572 4111  
[mike.thompson@cushwake.com](mailto:mike.thompson@cushwake.com)  
LIC #00822523

300 Santana Row, Fifth Floor  
San Jose, CA 95128  
main +1 408 615 3400  
fax +1 408 615 4444  
[cushmanwakefield.com](http://cushmanwakefield.com)

## FLOOR PLAN

**Suite 400: ±5,974 SF**

AVAILABLE NOW



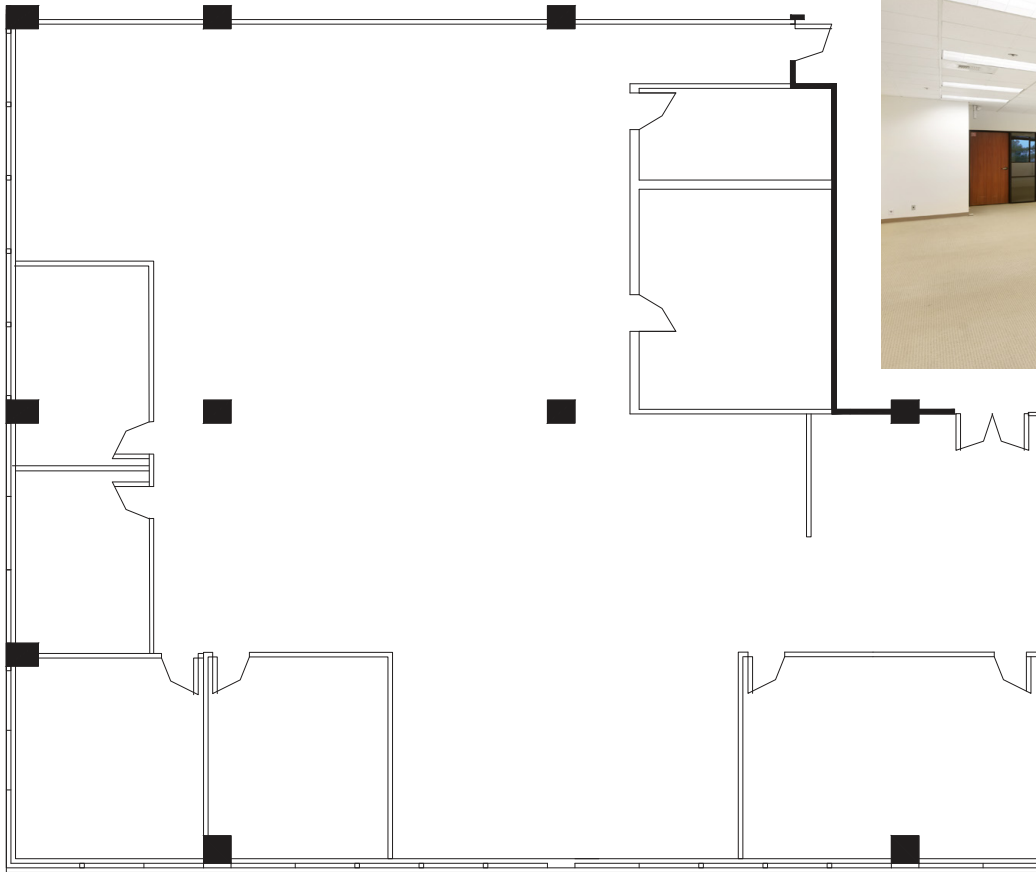
**Mike Thompson**  
Senior Director  
+1 408 572 4111  
mike.thompson@cushwake.com  
LIC #00822523

300 Santana Row, Fifth Floor  
San Jose, CA 95128  
main +1 408 615 3400  
fax +1 408 615 4444  
cushmanwakefield.com

## FLOOR PLAN

**Suite 412: ±5,928 SF**

AVAILABLE NOW



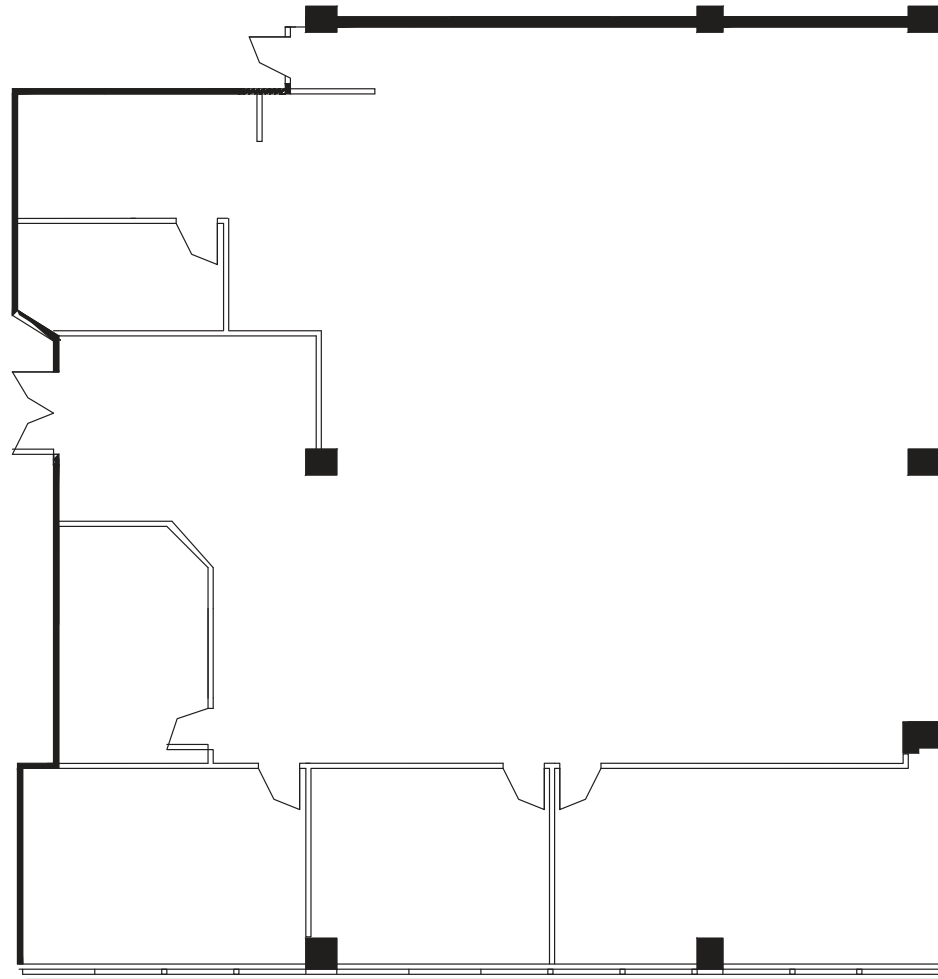
**Mike Thompson**  
Senior Director  
+1 408 572 4111  
[mike.thompson@cushwake.com](mailto:mike.thompson@cushwake.com)  
LIC #00822523

300 Santana Row, Fifth Floor  
San Jose, CA 95128  
main +1 408 615 3400  
fax +1 408 615 4444  
[cushmanwakefield.com](http://cushmanwakefield.com)

## FLOOR PLAN

**Suite 420: ±4,993 SF**

AVAILABLE NOW



**Mike Thompson**  
Senior Director  
+1 408 572 4111  
[mike.thompson@cushwake.com](mailto:mike.thompson@cushwake.com)  
LIC #00822523

300 Santana Row, Fifth Floor  
San Jose, CA 95128  
main +1 408 615 3400  
fax +1 408 615 4444  
[cushmanwakefield.com](http://cushmanwakefield.com)