

FOR LEASE

DANA MARINA PLAZA

24901 DANA POINT HARBOR DRIVE
DANA POINT, CA 92629



55,457 SF RETAIL / OFFICE PROJECT

- Iconic 5-building project located in the heart of Dana Point Harbor
- Flexibility within potential uses
- Beautiful outdoor common areas
- Excellent signage opportunities with unparalleled visibility
- Proximity to amenities & food services including walking distance to marina
- On-site ATM
- Ocean views

Offered exclusively by:

RETAIL

CHAD R. IAFRATE, CCIM

+1 760 431 4234

chad.iafrate@cushwake.com

LIC #01484290

OFFICE

BROOKS CAMPBELL

+1 760 431 4215

brooks.campbell@cushwake.com

LIC #01380901

DANIELLE BERGSON

+1 808 419 0042

danielle.bergson@cushwake.com

LIC #02196210

Owned by:



DANA MARINA PLAZA

24901 - 25001 DANA POINT HARBOR DRIVE, DANA POINT, CA 92629

AVAILABILITIES

Suite #	RSF	Available	Pricing	Comments
24921 - Suite A140	~ 1,995	Immediate	Negotiable	Retail
24921 - Suite B200	1,611*	Immediate	\$3.95/RSF + U & J	Office/Retail
24921 - Suite B205	2,659*	Immediate	\$3.95/RSF + U & J	Office/Retail

*Suites 200- 205 can be combined for 4,269 RSF



Offered exclusively by:

RETAIL

CHAD R. IAFRATE, CCIM

+1 760 431 4234

chad.iafrate@cushwake.com

LIC #01484290

OFFICE

BROOKS CAMPBELL

+1 760 431 4215

brooks.campbell@cushwake.com

LIC #01380901

DANIELLE BERGSON

+1 808 419 0042

danielle.bergson@cushwake.com

LIC #02196210



DANA MARINA PLAZA

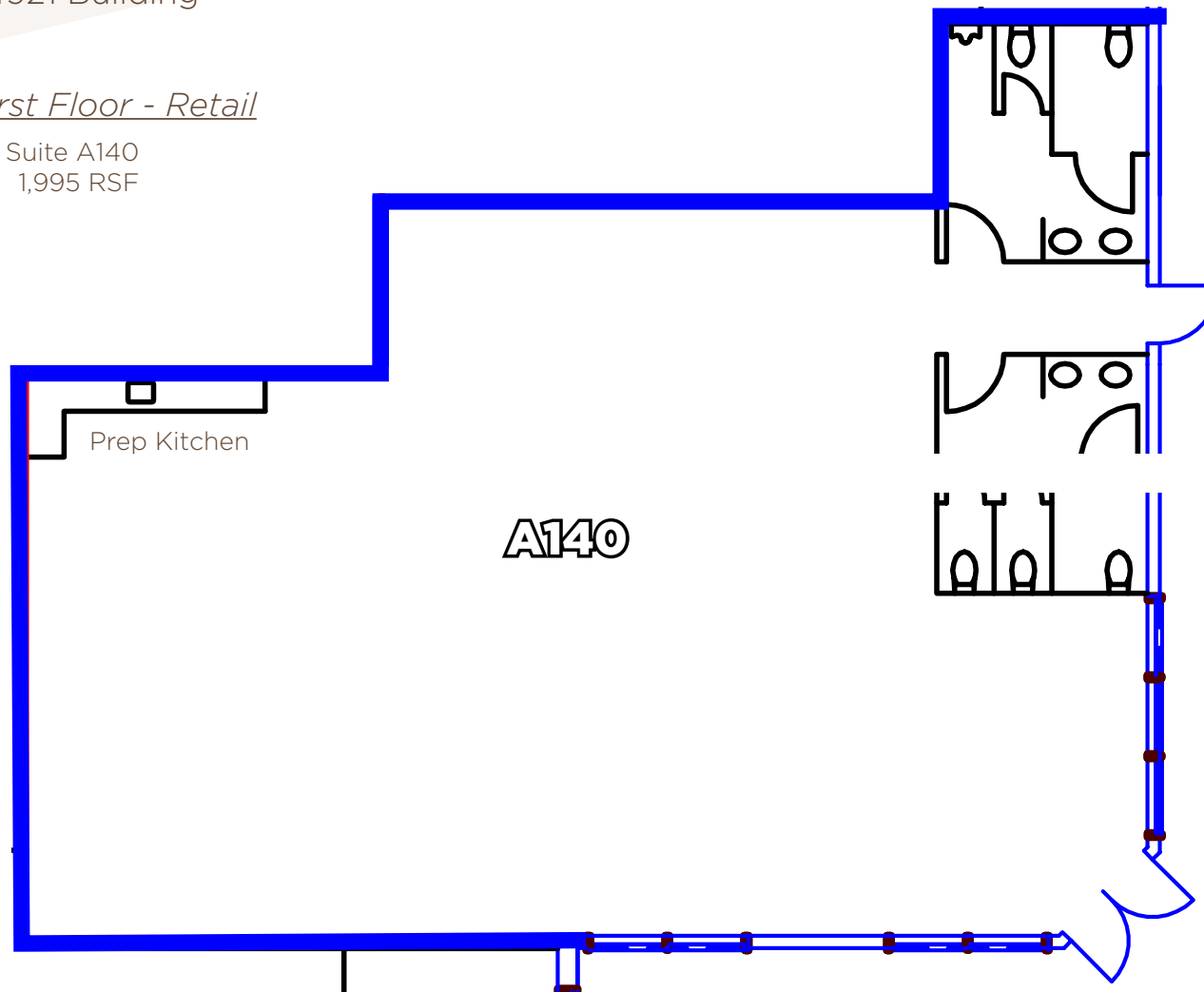
24901 - 25001 DANA POINT HARBOR DRIVE, DANA POINT, CA 92629

FLOOR PLANS

24921 Building

First Floor - Retail

Suite A140
1,995 RSF



Offered exclusively by:

RETAIL

CHAD R. IAFRATE, CCIM
+1 760 431 4234
chad.iafrate@cushwake.com
LIC #01484290

OFFICE

BROOKS CAMPBELL
+1 760 431 4215
brooks.campbell@cushwake.com
LIC #01380901

DANIELLE BERGSON
+1 808 419 0042
danielle.bergson@cushwake.com
LIC #02196210



DANA MARINA PLAZA

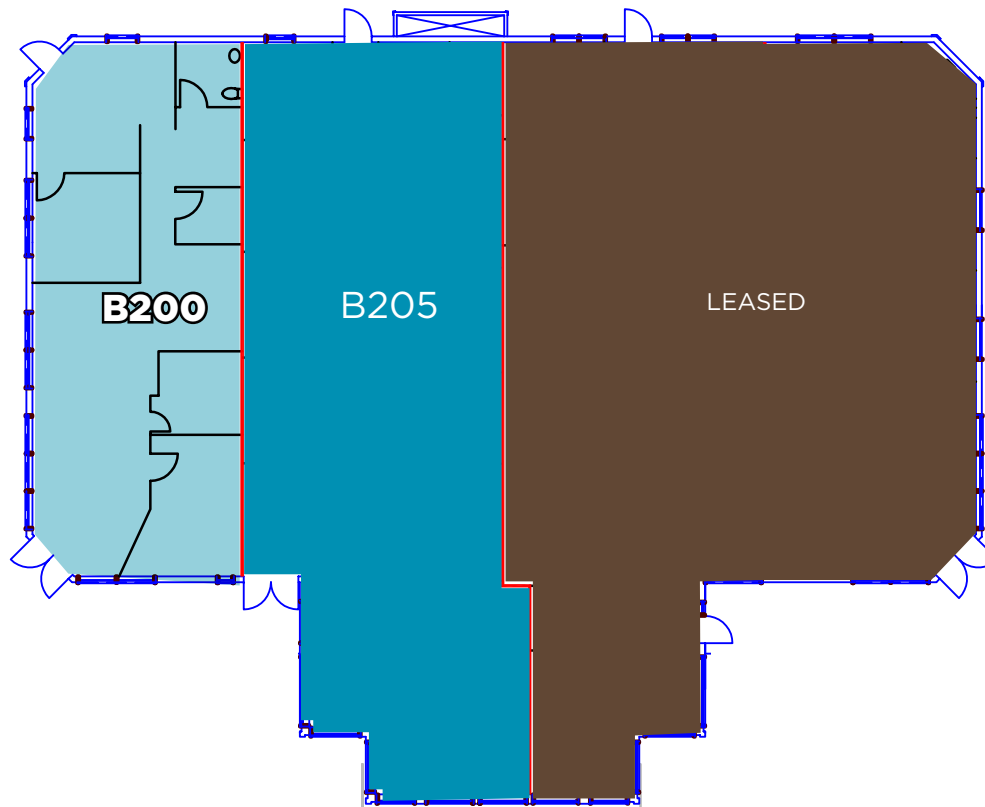
24901 - 25001 DANA POINT HARBOR DRIVE, DANA POINT, CA 92629

FLOOR PLANS

24921 Building

Second Floor

Suite B200
1,610 RSF



Offered exclusively by:

RETAIL

CHAD R. IAFRATE, CCIM

+1 760 431 4234

chad.iafrate@cushwake.com

LIC #01484290

OFFICE

BROOKS CAMPBELL

+1 760 431 4215

brooks.campbell@cushwake.com

LIC #01380901

DANIELLE BERGSON

+1 808 419 0042

danielle.bergson@cushwake.com

LIC #02196210



DANA MARINA PLAZA

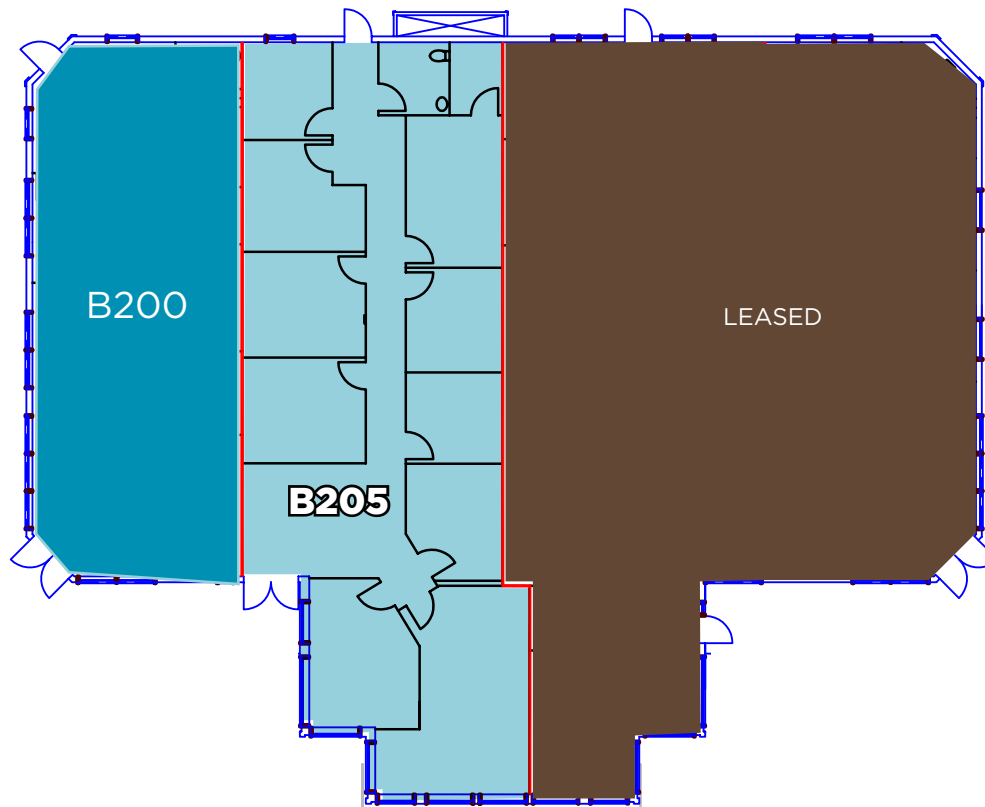
24901 - 25001 DANA POINT HARBOR DRIVE, DANA POINT, CA 92629

FLOOR PLANS

24921 Building

Second Floor

Suite B205
2,659 RSF



Offered exclusively by:

RETAIL

CHAD R. IAFRATE, CCIM

+1 760 431 4234

chad.iafrate@cushwake.com

LIC #01484290

OFFICE

BROOKS CAMPBELL

+1 760 431 4215

brooks.campbell@cushwake.com

LIC #01380901

DANIELLE BERGSON

+1 808 419 0042

danielle.bergson@cushwake.com

LIC #02196210



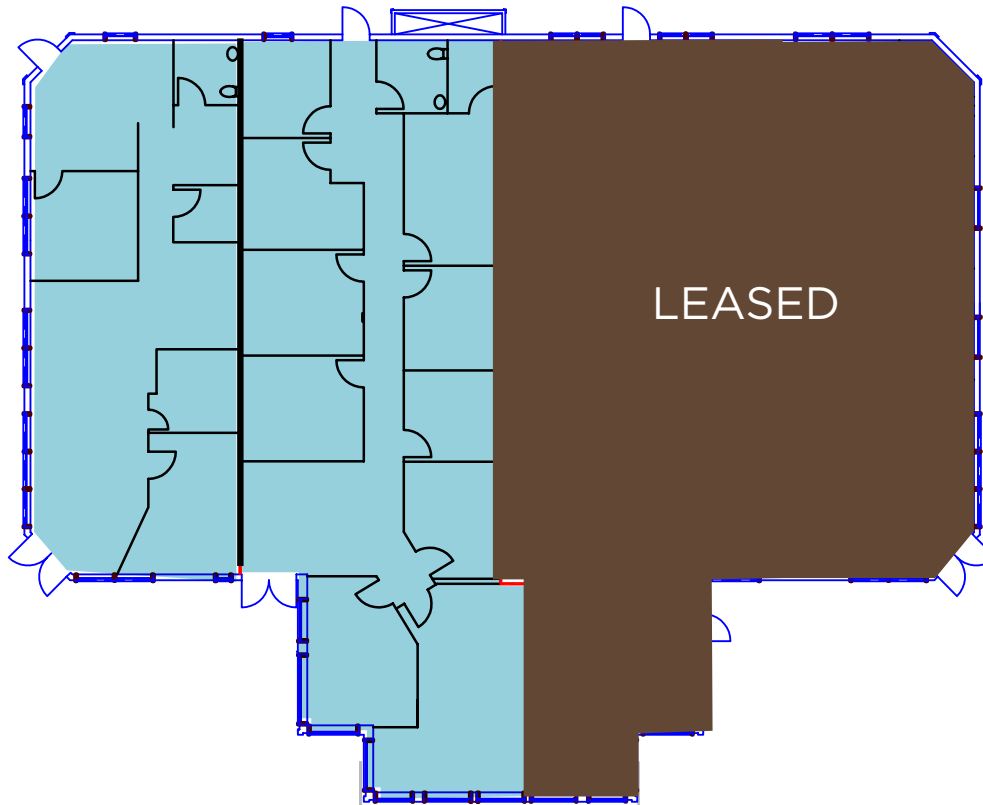
DANA MARINA PLAZA

24901 - 25001 DANA POINT HARBOR DRIVE, DANA POINT, CA 92629

FLOOR PLANS

24921 Building

Second Floor
Suites B200 - B205
4,269 RSF



Offered exclusively by:

RETAIL

CHAD R. IAFRATE, CCIM

+1 760 431 4234

chad.iafrate@cushwake.com

LIC #01484290

OFFICE

BROOKS CAMPBELL

+1 760 431 4215

brooks.campbell@cushwake.com

LIC #01380901

DANIELLE BERGSON

+1 808 419 0042

danielle.bergson@cushwake.com

LIC #02196210





DANA MARINA PLAZA

24901 - 25001 DANA POINT HARBOR DRIVE, DANA POINT, CA 92629

Owned by:



Offered exclusively by:

CHAD R. IAFRATE, CCIM
+1 760 431 4234
chad.iafrate@cushwake.com
LIC #01484290

BROOKS CAMPBELL
+1 760 431 4215
brooks.campbell@cushwake.com
LIC #01380901

DANIELLE BERGSON
+1 808 419 0042
danielle.bergson@cushwake.com
LIC#02196210



**CUSHMAN &
WAKEFIELD**

12830 El Camino Real,
Suite 100
San Diego, CA 92130
P +1 760 431 4200
F +1 760 454 3869
cushmanwakefield.com

Cushman & Wakefield Copyright 2025. The information contained herein was lawfully obtained from sources we consider reliable. Cushman & Wakefield is not responsible and expressly disclaims all liability for errors, omissions, prior sales, withdrawal from the market or change in price. Seller (or Lessor, as the case may be) and broker make no representation as to the environmental condition of the property and recommend Purchaser's (or Lessee's) independent investigation.