

WATER VIEW SUBLEASE

1285

WEST PENDER STREET

8,265 SF

FULL 8TH FLOOR AT ARTHUR ERICKSON
DESIGNED EVERGREEN BUILDING



ASKING **RENT**

Please contact agents

ADDITIONAL **RENT**

\$22.91 psf/pa (2026 estimate)

SUBLEASE **EXPIRY**

May 30, 2028

AVAILABILITY

Immediate

SUBTENANT **PARKING**

Subtenant Parking: 6 secured underground parking stalls at prevailing market rent

1285 WEST PENDER STREET | WATER VIEW SUBLEASE

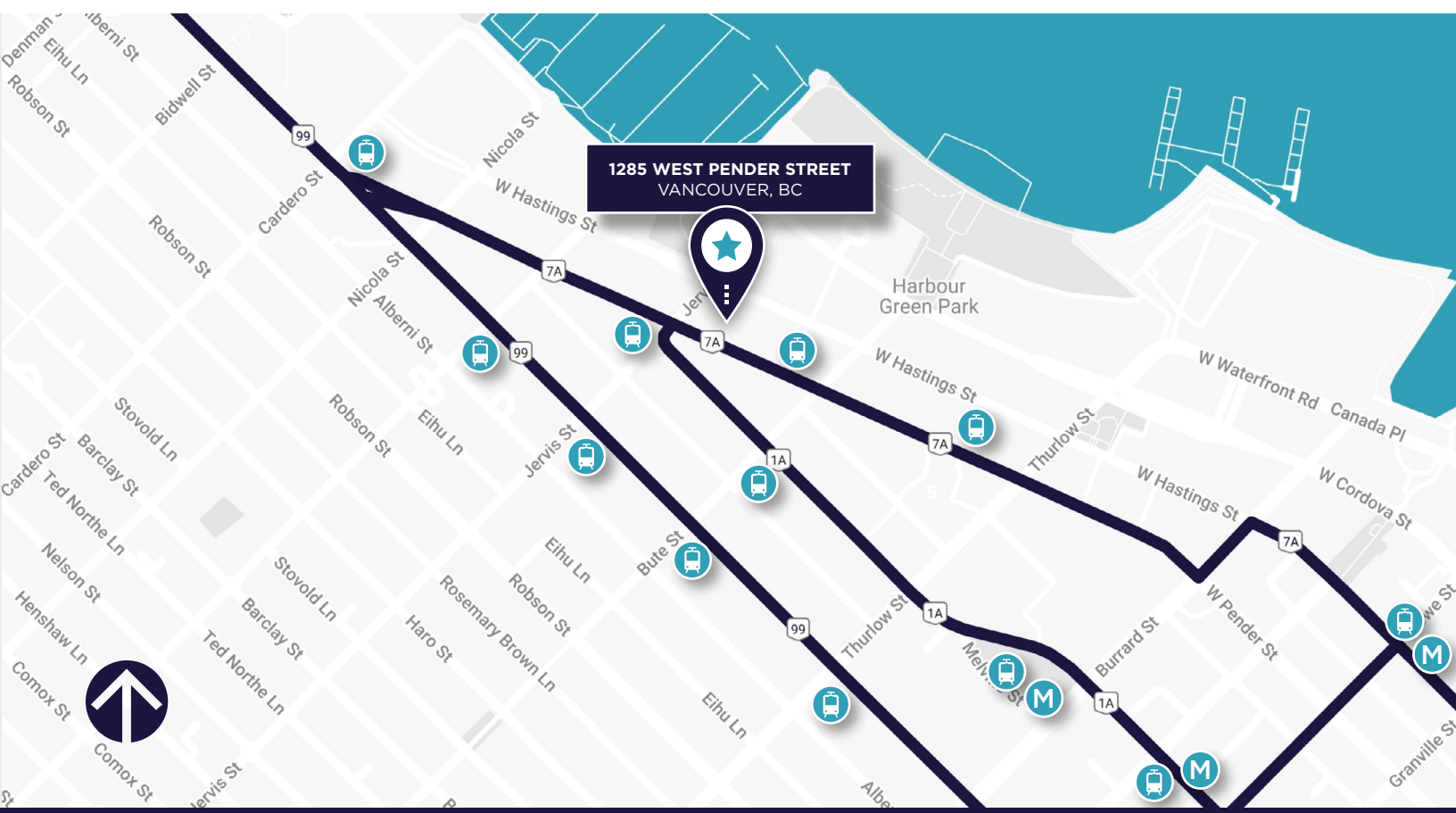
SUITE FEATURES

- High quality improvements, fully plug & play (furnished and equipped).
- Efficient layout comprised of mostly open plan space, breakout rooms, and team-based sections.
- Very bright, good access to natural light throughout all work areas.

BUILDING OVERVIEW

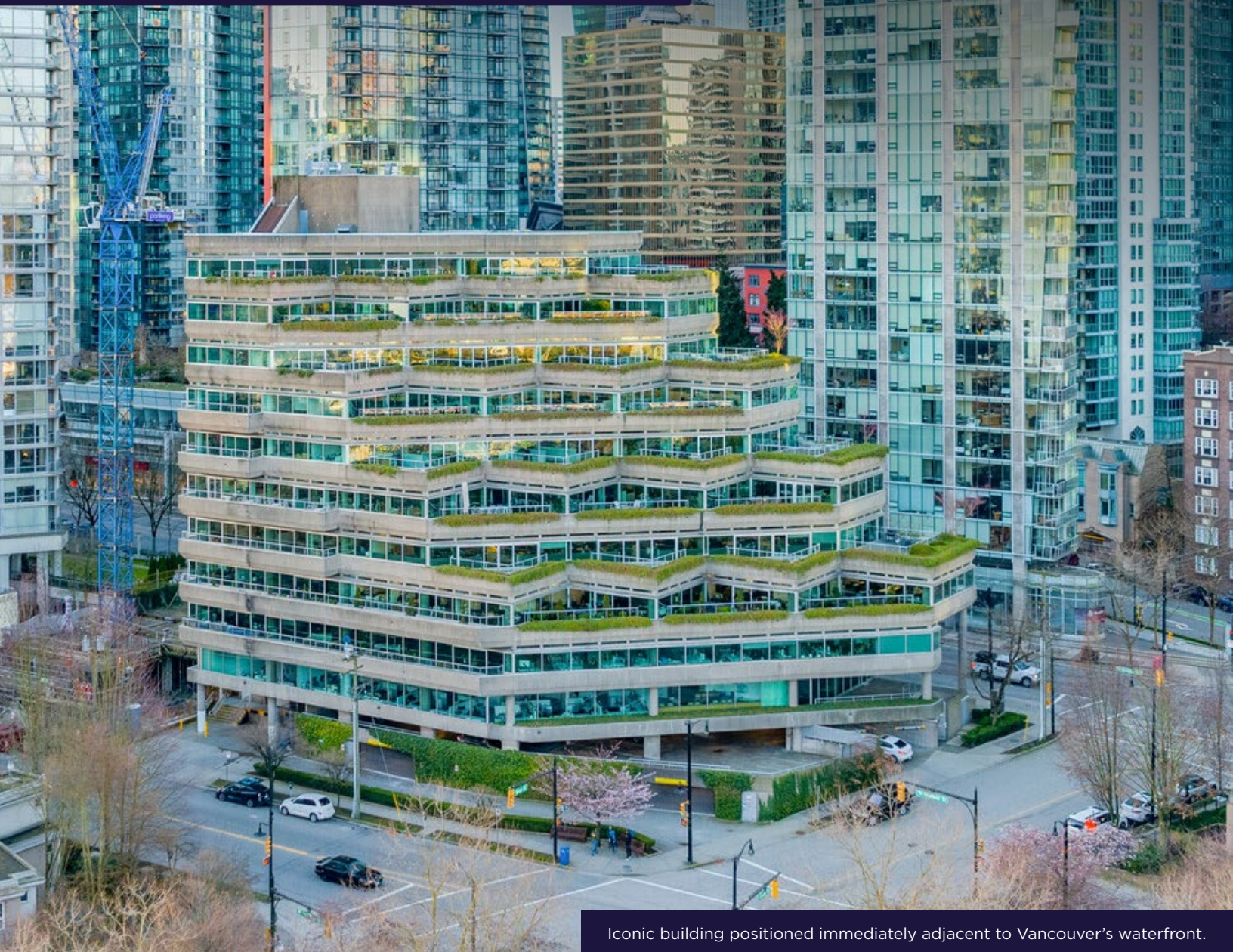
- Arthur Erickson designed building overlooking Coal Harbour, Stanley Park and the North Shore.
- Multiple terraced garden deck/patios on each floor.
- In proximity to major hotels restaurants, the seawall and across the street from Urban Fare.

FLOOR PLAN





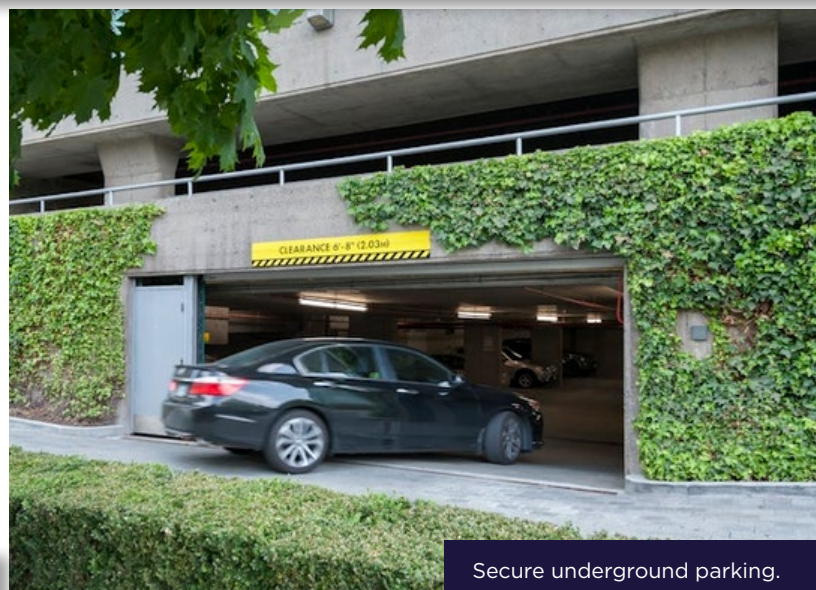
CUSHMAN &
WAKEFIELD



Iconic building positioned immediately adjacent to Vancouver's waterfront.



Professionally managed by QuadReal Property Group.



Secure underground parking.

1285 WEST PENDER STREET | WATER VIEW SUBLEASE

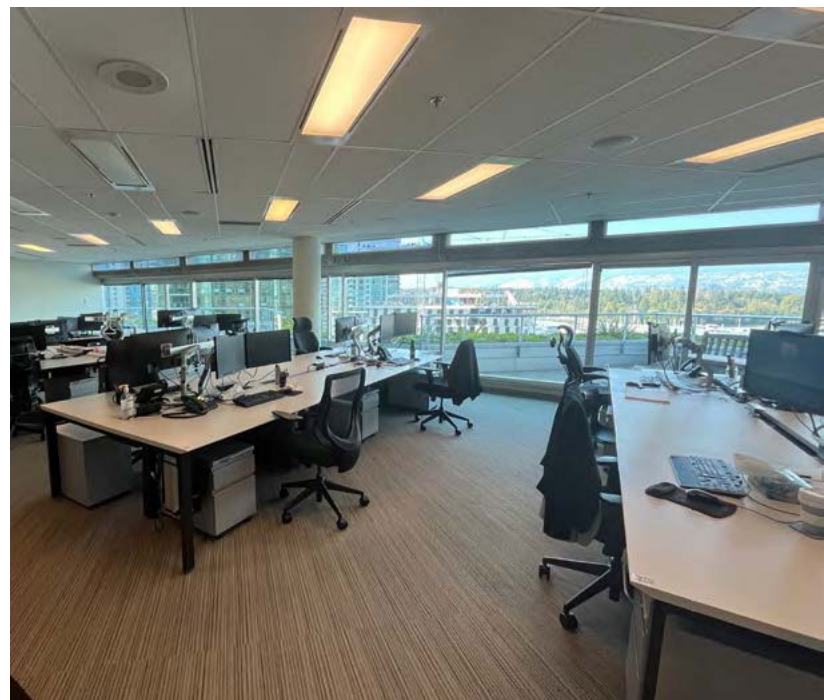




**CUSHMAN &
WAKEFIELD**



1285 WEST PENDER STREET | WATER VIEW SUBLEASE





WATER VIEW SUBLEASE

1285

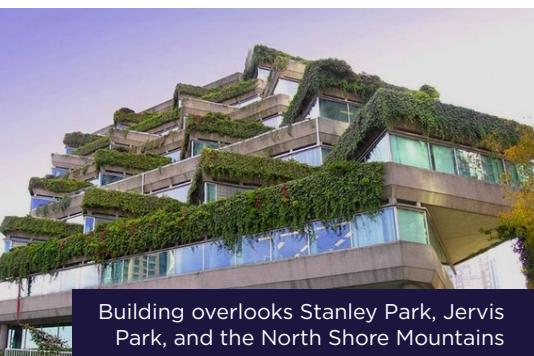
WEST PENDER STREET

8,265 SF

FULL 8TH FLOOR AT ARTHUR ERICKSON
DESIGNED EVERGREEN BUILDING



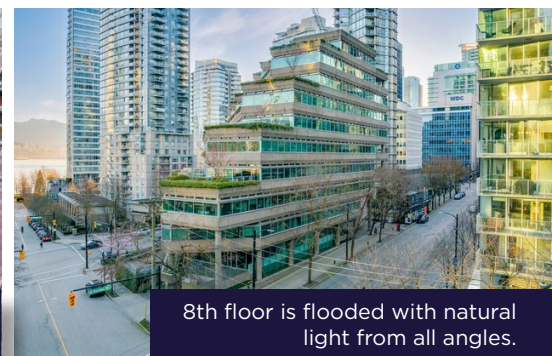
Timeless Arthur Erickson architecture.



Building overlooks Stanley Park, Jervis Park, and the North Shore Mountains



Multiple private patios with unobstructed waterfront exposure.



8th floor is flooded with natural light from all angles.

JORDAN CORBETT

Associate Vice President
Tenant Advisory Group
Direct +1 604 640 5815
Mobile +1 778 288 5203
jordan.corbett@cushwake.com

SEBASTIEN GEDDES

Associate
Tenant Advisory Group
Direct +1 604 630 5191
Mobile +1 778 980 8733
sebastien.geddes@cushwake.com

BART CORBETT

BG Corbett Realty Advisors Ltd.
Vice Chair
Tenant Advisory Group
Direct +1 604 640 5881
Mobile +1 604 351 5427
bart.corbett@cushwake.com



**CUSHMAN &
WAKEFIELD**

Suite 1200 - 700 West Georgia Street
PO Box 10023, Pacific Centre, Vancouver, BC V7Y 1A1
+1 604 683 3111 / cushmanwakefield.ca

©2026 Cushman & Wakefield ULC. All rights reserved. The information contained in this communication is strictly confidential. This information has been obtained from sources believed to be reliable but has not been verified. NO WARRANTY OR REPRESENTATION, EXPRESS OR IMPLIED, IS MADE AS TO THE CONDITION OF THE PROPERTY (OR PROPERTIES) REFERENCED HEREIN OR AS TO THE ACCURACY OR COMPLETENESS OF THE INFORMATION CONTAINED HEREIN, AND SAME IS SUBMITTED SUBJECT TO ERRORS, OMISSIONS, CHANGE OF PRICE, RENTAL OR OTHER CONDITIONS, WITHDRAWAL WITHOUT NOTICE, AND TO ANY SPECIAL LISTING CONDITIONS IMPOSED BY THE PROPERTY OWNER(S). ANY PROJECTIONS, OPINIONS OR ESTIMATES ARE SUBJECT TO UNCERTAINTY AND DO NOT SIGNIFY CURRENT OR FUTURE PROPERTY PERFORMANCE.