

# GLENMORE BUSINESS PARK



550 - 71 AVENUE SE, 7710 - 5 STREET SE, 610 - 70 AVENUE SE, CALGARY, AB

**\$18.00 PSF OF INDUCEMENTS FOR DEALS AT SUITE 206-210, 610 - 70 AVENUE SE**

\*ONLY APPLICABLE TO DEALS ON THE FULL SPACE, CAN BE APPLIED TO RENT, MOVE ALLOWANCE, IMPROVEMENTS, ETC. IS AVAILABLE ON A 5 YEAR TERM WITH A \$10.00 PSF RENTAL RATE.



# ABOUT THE PROPERTY

Welcome to **Glenmore Business Park**, a modern business hub strategically located off the intersection of Blackfoot Trail and Glenmore Trail. Surrounding amenities include Chinook Mall, Deerfoot Meadows, Calgary Farmers' Market South, and so much more. The site is equipped with top-notch infrastructure including high-speed fibre internet and ample parking, as well as easy access to transit stops. Flexible leasing options are available to accommodate businesses of all sizes and industries, from short-term leases to long-term commitments.

## HIGHLIGHTS

- Exterior upgrades to all buildings
- 52,000 vehicles per day along Blackfoot Trail
- 12 minutes to Downtown Calgary and 20 minutes to the Calgary International Airport
- Zoning allowing for a wide variety of uses
- Surface and underground parking available (except for 610 70 Avenue SE, only surface available)
- Surrounded by excellent amenities
- Warehouse opportunities available in the park ranging from 2,700 sf to 24,497 sf
- 24/7 HVAC
- Furniture available

## ABOUT THE LANDLORD

Dream Industrial is an innovative and customer-focused owner, operator, and developer of high-quality industrial properties. Dream Industrial invests in and manages over 71 million square feet of industrial assets in Canada, Europe, and the United States for over 1,500 occupiers operating across a diversity of sectors. The organization has a track record of delivering best-in-class modern industrial properties globally, with a development pipeline that includes approximately 6 million square feet of active projects and an additional 7 million square feet available for expansion or built-to-suit purposes.

Dream Industrial is part of the Dream Group of Companies and is managed by Dream Unlimited Corp. (TSX:DRM), a leading global real estate asset manager and institutional investor with \$27 billion in assets under management. Dream Industrial is comprised of Dream Industrial REIT (TSX: DIR.UN) as well as several private vehicles.

# PROPERTY FEATURES

## 550 - 71 Avenue SE



**Space Available:** Suite 150: 11,046 sf  
Demisable down to 2,110 sf  
Suite 220: 5,919 sf  
Demisable down to 2,832 sf

**Availability:** Immediately

**Parking:** 1 per 436 sf  
Underground: \$75/  
stall/month

**Rates:** Market

**Op Costs:** \$15.55 psf (2026)

**Zoning** DC (Now accepting  
medical uses, financial  
institutions, health care  
services, and more)

## 7710 - 5 Street SE



**Space Available:** Suite 104: 679 sf  
Suite 212: 2,419 sf C/L

**Availability:** Suite 104: Apr 1, 2026  
Suite 212: Jan 1, 2026

**Parking:** 1 per 377 sf  
Underground: \$75/  
stall/month

**Rates:** Market

**Op Costs:** \$14.86 psf (2026)

**Zoning** I-G

## 610 - 70 Avenue SE



**Space Available:** Suite 206-210: 7,802 sf  
Demisable down to 3,649 sf

**Availability:** Immediately

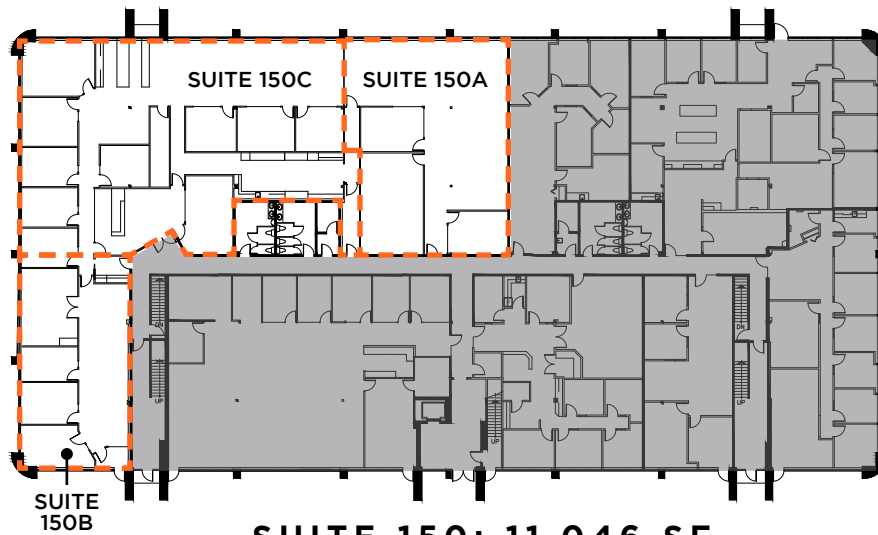
**Parking:** 1 per 350 sf

**Rates:** Market

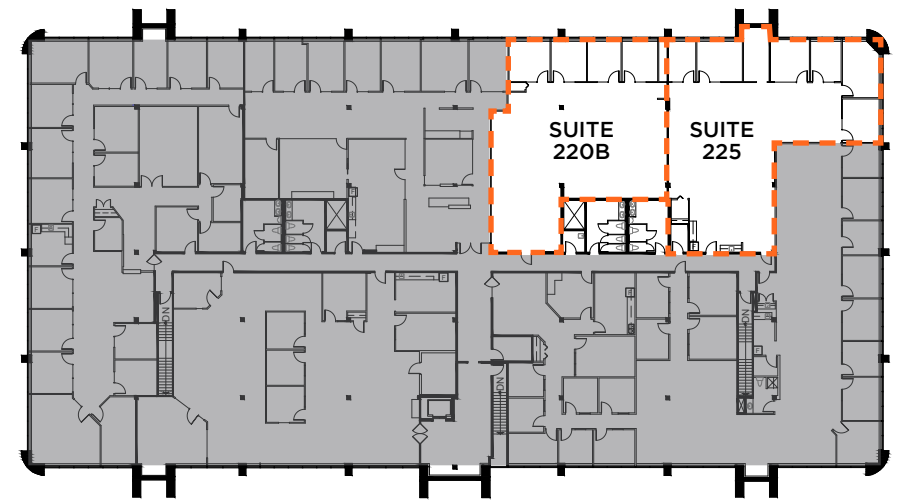
**Op Costs:** \$10.58 psf (2026)  
\*Includes utilities

**Zoning** I-G

# FLOOR PLANS



**SUITE 150: 11,046 SF**  
**DEMISABLE TO**  
 SUITE 150A: 3,040 SF  
 SUITE 150B: 2,110 SF  
 SUITE 150C: 5,896 SF  
 SUITE 150A/C: 8,936 SF  
 SUITE 150B/C: 8,006 SF



**360° SUITE 220: 5,919 SF**  
**DEMISABLE TO**  
 SUITE 220B: 2,832 SF  
 SUITE 225: 3,087 SF

## 550-71 AVENUE SE

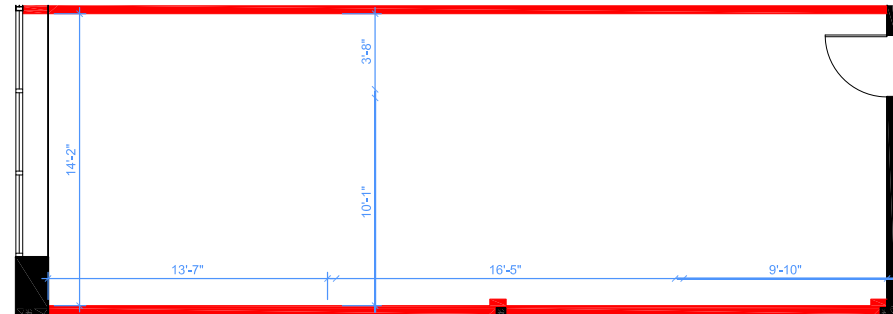
- Recently painted building exterior and common area upgrades
- Suite 150 comes fully furnished, Suite 220 is partially furnished
- Heated underground parking available
- Building offers handicap accessible ramp and convenient bike storage
- Short term leasing available



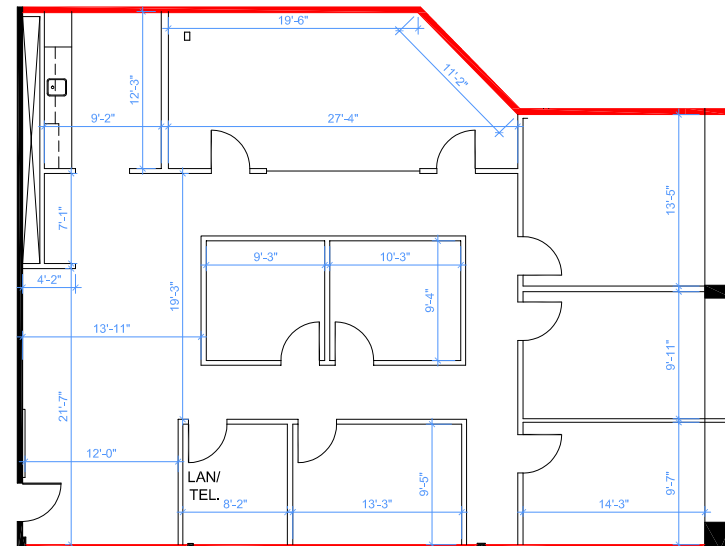
## 7710 - 5 STREET SE

- Major exterior building upgrade completed
- One year free underground parking with 5 year term

## FLOOR PLANS



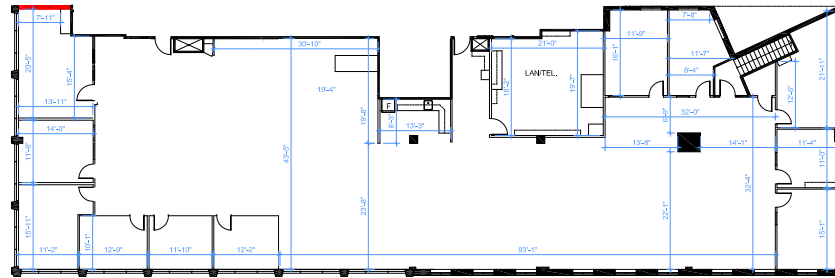
**SUITE 104: 679 SF**



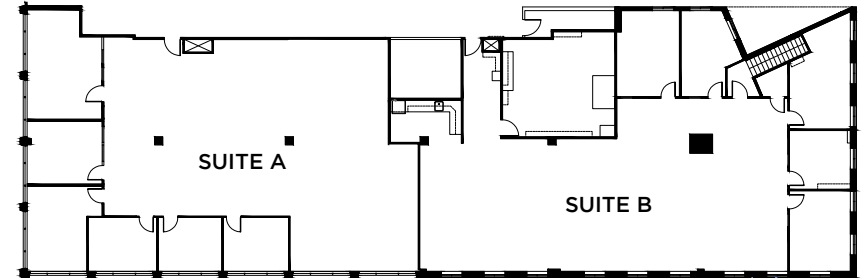
**SUITE 212: 2,419 SF C/L**



# FLOOR PLANS



**360° SUITE 206-210: 7,802 SF**



**SUITE 206-210 DEMISING OPTIONS**  
**SUITE A: 3,649 SF**  
**SUITE B: 4,153 SF**

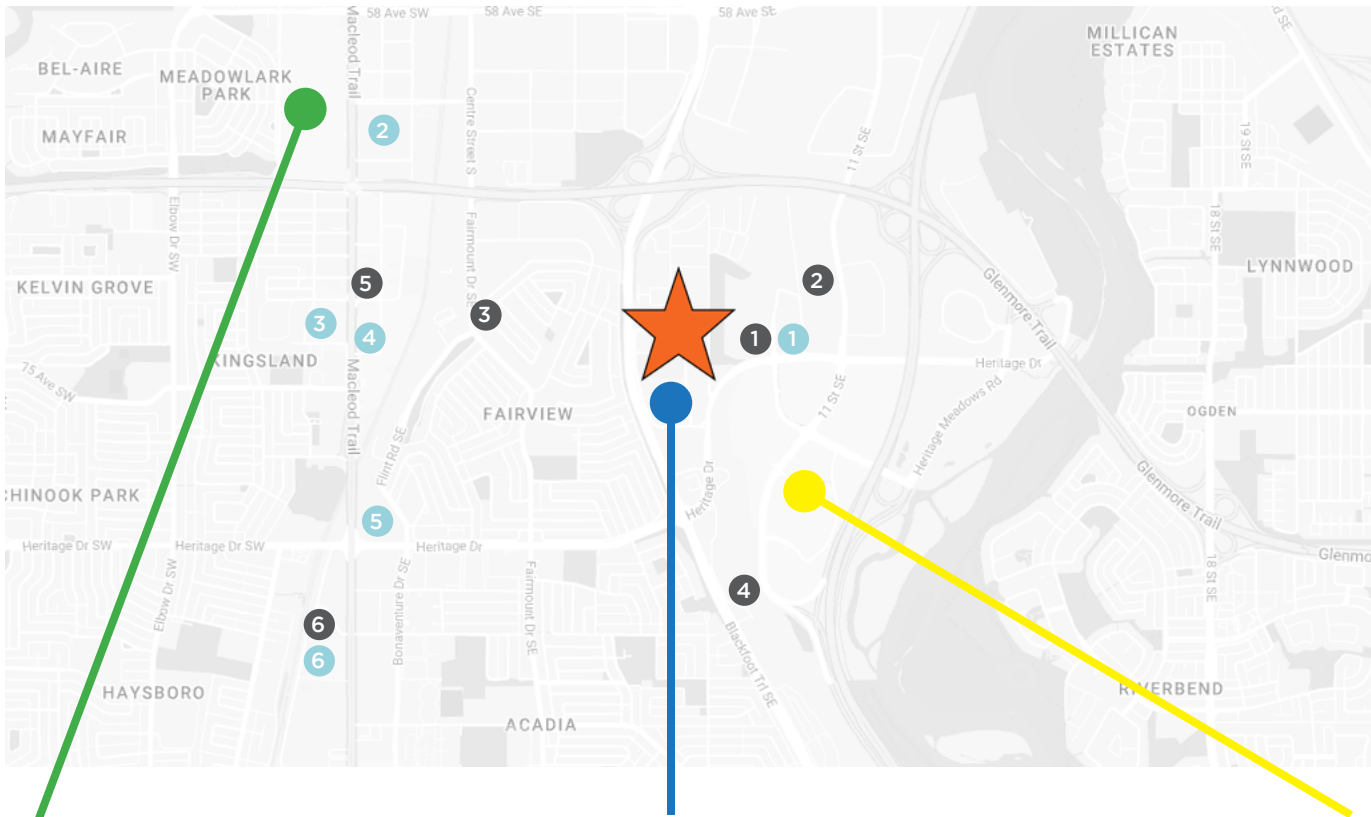
## 610-70 AVENUE SE

- Recent exterior and common area renovations
- Surface parking available, free of charge
- New carpet, paint, and lights
- Short term leasing available
- **\$18.00 PSF OF INDUCEMENTS FOR DEALS AT UNIT 206-210 - Only applicable to deals on the full space, can be applied to rent, move allowance, improvements, etc. is available on a 5 year term with a \$10.00 psf rental rate**



# AMENITY MAP

- 1 Tim Hortons, Boston Pizza, Noodle Box
- 2 Benny's Breakfast Bar, European Market Deli
- 3 Pita Queen, Beirut Street Food
- 4 Starbucks, Les Moulins La Fayette
- 5 Cactus Club, The Keg Steakhouse, Fat Burger
- 6 Tim Hortons, Big Catch Sushi Bar, Padmanadi



- 1 Costco, Costco Gas, Dollarama, Ashley HomeStore
- 2 The Home Depot, BMO, Staples, PetSmart
- 3 Marshalls, Supplement World, Sally Beauty
- 4 A Mart, Dollarama, Kalyna European Food and Deli
- 5 Winners, HomeSense, Dollar Tree
- 6 Calgary Co-op, Scotiabank, connectFirst

## CF Chinook Centre

JOEY RESTAURANTS

**Chapters**

**SHOPPERS**  
DRUG MART

**SPORTCHEK**



*Tim Hortons*

## Calgary Farmer's Market



## Deerfoot Meadows

**Walmart**  **IKEA**

**T&T**



**BEST BUY**

**REAL CANADIAN SUPERSTORE**







**For more information  
please contact:**

**TRENT PETERSON**

Vice President  
Office Sales & Leasing  
403 261 1101

[trent.peterson@cushwake.com](mailto:trent.peterson@cushwake.com)

**DAVID LEES**

Executive Vice President  
Office Sales & Leasing  
403 261 1102

[david.lees@cushwake.com](mailto:david.lees@cushwake.com)

**ADAM RAMSAY**

Executive Vice President  
Office Sales & Leasing  
403 261 1103

[adam.ramsay@cushwake.com](mailto:adam.ramsay@cushwake.com)

**CUSHMAN & WAKEFIELD ULC**  
250 6 Avenue SW, Suite 2400  
Calgary, AB T2P 3H7 | Canada  
[cushmanwakefield.com](http://cushmanwakefield.com)

©2026 Cushman & Wakefield. All rights reserved. The information contained in this communication is strictly confidential. This information has been obtained from sources believed to be reliable but has not been verified. NO WARRANTY OR REPRESENTATION, EXPRESS OR IMPLIED, IS MADE AS TO THE CONDITION OF THE PROPERTY (OR PROPERTIES) REFERENCED HEREIN OR AS TO THE ACCURACY OR COMPLETENESS OF THE INFORMATION CONTAINED HEREIN, AND SAME IS SUBMITTED SUBJECT TO ERRORS, OMISSIONS, CHANGE OF PRICE, RENTAL OR OTHER CONDITIONS, WITHDRAWAL WITHOUT NOTICE, AND TO ANY SPECIAL LISTING CONDITIONS IMPOSED BY THE PROPERTY OWNER(S). ANY PROJECTIONS, OPINIONS OR ESTIMATES ARE SUBJECT TO UNCERTAINTY AND DO NOT SIGNIFY CURRENT OR FUTURE PROPERTY PERFORMANCE.