

LAKEPOINT IV

6301 HAZELTINE NATIONAL DR, ORLANDO, FLORIDA 32824



CONVENIENT ACCESS
TO SR 528 AND SR 417

**17,793 SF AVAILABLE
FOR LEASE**

SPACE HIGHLIGHTS

ASKING RATE

\$12.75/SF NNN

OPEX*

\$4.13 PSF

MONTHLY RATE*

\$25,654.54

WAREHOUSE SIZE

±14,293 SF

EXISTING OFFICE

±3,500 SF

CLEAR HEIGHT

24'

LOADING DOORS

(1) DOCK DOOR
(1) DRIVE-IN W RAMP

PARKING RATIO

1.40/1,000

ZONING

AC-3

FIRE SUPPRESSION

WET

YEAR BUILT

1987

AVAILABILITY

IMMEDIATELY

**Sales Tax Included*

***Denotes Estimated Operating Expenses for 2024*

CONTACT INFORMATION



JARED BONSHIRE

Executive Managing Director
+1 407 541 4414
jared.bonshire@cushwake.com

DAVID PEREZ

Executive Managing Director
+1 407 541 4435
david.perez@cushwake.com

TAYLOR ZAMBITO

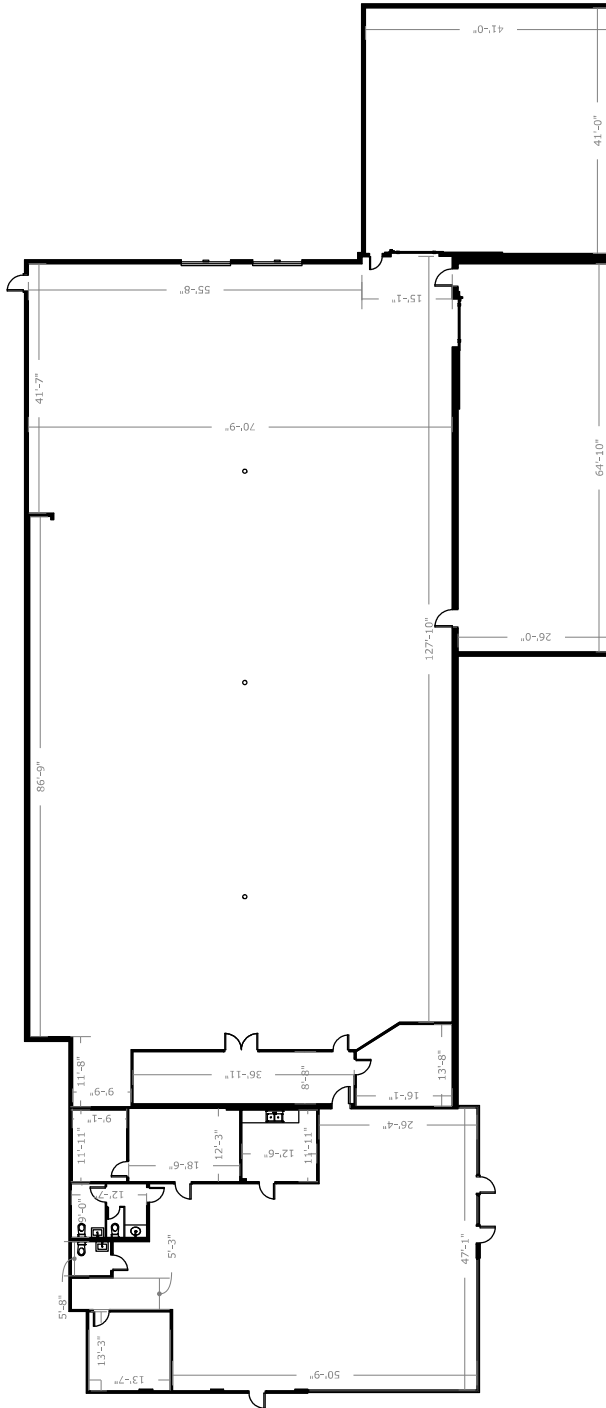
Senior Director
+1 407 541 4409
taylor.zambito@cushwake.com

RYAN HUBBARD

Director
+1 407 541 4390
ryan.hubbard@cushwake.com

©2024 Cushman & Wakefield. All rights reserved. The information contained in this communication is strictly confidential. This information has been obtained from sources believed to be reliable but has not been verified. No warranty or representation, express or implied, is made as to the condition of the property (or properties) referenced herein or as to the accuracy or completeness of the information contained herein, and same is submitted subject to errors, omissions, change of price, rental or other conditions, withdrawal without notice, and to any special listing conditions imposed by the property owner(s). Any projections, opinions or estimates are subject to uncertainty and do not signify current or future property performance.

17,793 SF



JARED BONSHIRE

DAVID PEREZ

TAYLOR ZAMBITO

RYAN HUBBARD