

# LIBERTY PARK I



**IRREPLACEABLE OWNER USER OFFICE BUILDING**

371 NE GILMAN BLVD | ISSAQUAH, WA

**AVAILABLE FOR SALE**

**UP TO**  
**44,343 RSF**  
**AVAILABLE FOR**  
**OCCUPANCY**

1 building | 3 floors

**ASKING PRICE**  
**\$19,000,000**



# BUILDING HIGHLIGHTS

Liberty Park I represents a rare opportunity to purchase an owner/user office property with in-place income. Situated at the intersection of NE Gilman Blvd and 3rd Ave NE, the Property offers exceptional visibility and accessibility. Liberty Park sits directly across the street from a new city park, steps away from downtown Issaquah, and adjacent to Costco's World headquarters.



## LARGE OWNER USER OPPORTUNITY

Up to 44,343 RSF  
with up to 15,000 SF  
available for immediate  
occupancy



## SCALABLE OCCUPANCY

All existing leases  
contain termination  
clauses



## IN PLACE INCOME

Currently 54% leased  
Potential to add  
up to an additional  
36,000 SF



## HIGH VISIBILITY

Highly visible with  
potential building  
signage facing I-90



## PARKING

Excellent Parking  
Ratio plus street  
parking

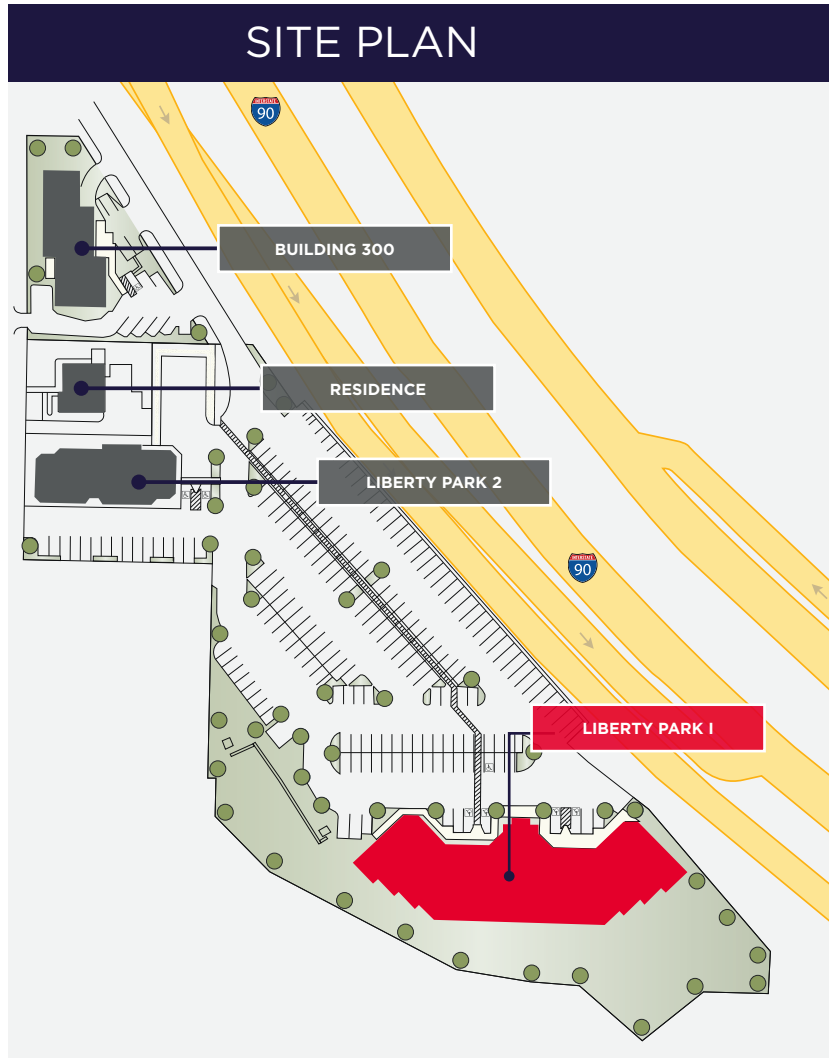
# BUILDING OVERVIEW



## LIBERTY PARK I

Address	371 NE Gilman Blvd
Building Size	44,343 RSF
Lot Size (per King County)	122,380 SF
Floors	Three (3)
Year Built	2001
Construction Type	Steel frame with slab metal decks and concrete block exterior panels
Occupancy	54%
Parking	168 stalls - 3.8/1,000 RSF

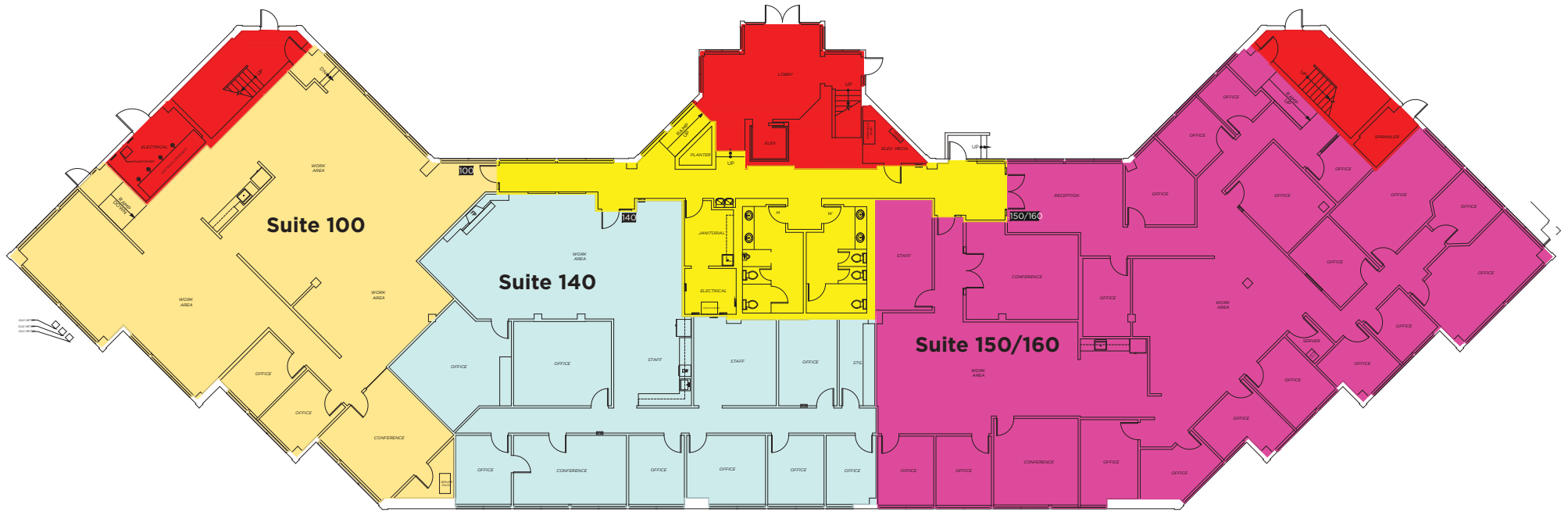
# LIBERTY PARK I SITEPLAN



# FLOOR 1

TOTAL | 14,554 RSF

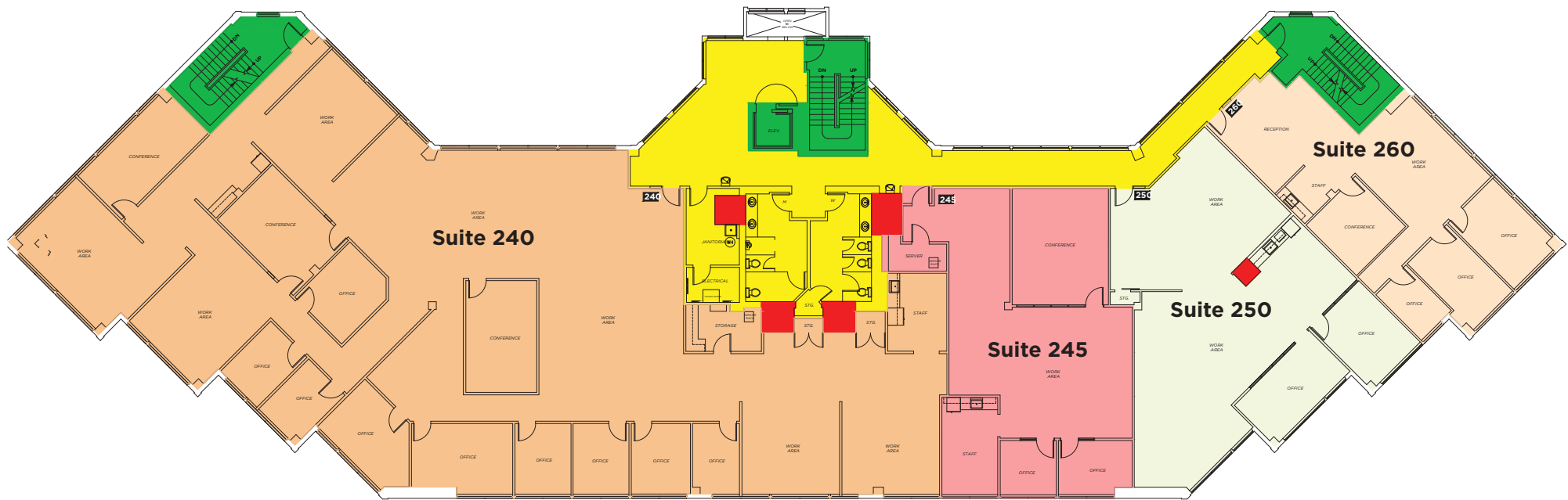
SUITE #	Rentable Area
SUITE 100	3,886
SUITE 140	3,921
SUITE 150/160	6,745



# FLOOR 2

TOTAL | 14,961 RSF

Suite #	Rentable Area
SUITE 240	8,868
SUITE 245	2,120
SUITE 250	2,287
SUITE 260	1,683

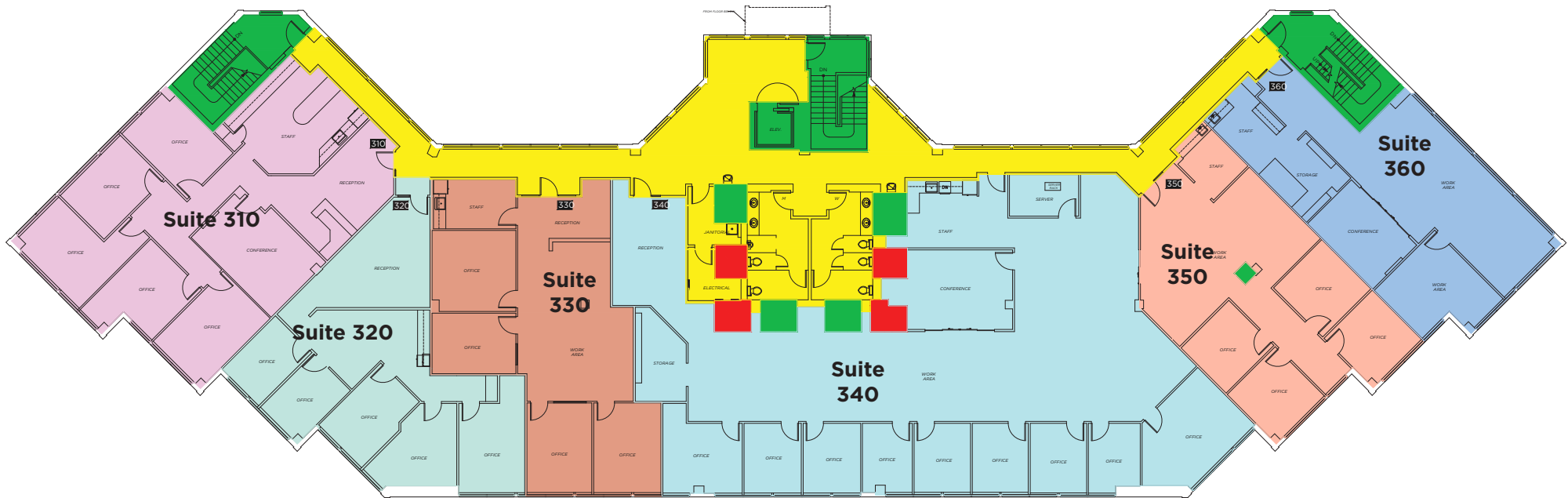



**LINKS TO MATTERPORT**  
[Suite 240](#) | [Suite 245](#)

# FLOOR 3

TOTAL | 14,827 RSF

Suite #	Rentable Area
SUITE 310	2,539
SUITE 320	1,799
SUITE 330	1,872
SUITE 340	5,127
SUITE 350	1,747
SUITE 360	1,741



# LOCATION HIGHLIGHTS

EASY ACCESS TO TOP RATED AMENITIES

**ISSAQUAH HIGHLANDS**

**SWEDISH MEDICAL GROUP**  
575,000 SF

**LIBERTY PARK I**

**HISTORIC DOWNTOWN ISSAQUAH**

**ISSAQUAH COMMONS**

- TARGET
- REI CO-OP
- TRADER JOE'S
- SAFeway
- POTBELLY SANDWICH SHOP
- petco
- BED BATH & BEYOND
- Panera BREAD
- Starbucks
- SEPHORA
- FedEx Office
- CHIPOTLE MEXICAN GRILL
- ROSS DRESS FOR LESS
- ME Massage Envy
- Bath & Body Works

**GLOBAL HEADQUARTERS**

**Costco**  
5,000 EMPLOYEES

**LAKE SAMMAMISH CENTER**

- BEST BUY
- Fred Meyer
- PRIMA EXPRESS
- QDOBA MEXICAN EATS
- Krispy Kreme
- THE HAWAIIAN HONEY
- Jamba
- Starbucks
- AT&T
- indigo URGENT CARE
- Walgreens

**BIG LOTS!**

**425 FITNESS**

**ISSAQUAH TRANSIT CENTER**

**LOWE'S**

**WU**

**HOBBY LOBBY**

**Costco WHOLESALE**

**PET SMART**

**Michael's**

**QFC Quality Food Centers**

**Shell**

**SATELLITE OFFICE**

SR 900



# LIBERTY PARK I

371 NE GILMAN BLVD | ISSAQUAH, WA



**BRIAN TOY**  
Director  
+1 425 985 6706  
Brian.Toy@cushwake.com

**DAN CHHAN**  
Managing Director  
+1 206 321 2047  
Dan.Chhan@cushwake.com

Cushman & Wakefield | 11235 SE 6th Street | Suite 200 | Bellevue, WA 98004

©2026 Cushman & Wakefield. All rights reserved. The material in this presentation has been prepared solely for information purposes, and is strictly confidential. Any disclosure, use, copying or circulation of this presentation (or the information contained within it) is strictly prohibited, unless you have obtained Cushman & Wakefield's prior written consent. The views expressed in this presentation are the views of the author and do not necessarily reflect the views of Cushman & Wakefield. Neither this presentation nor any part of it shall form the basis of, or be relied upon in connection with any offer, or act as an inducement to enter into any contract or commitment whatsoever. NO REPRESENTATION OR WARRANTY IS GIVEN, EXPRESS OR IMPLIED, AS TO THE ACCURACY OF THE INFORMATION CONTAINED WITHIN THIS PRESENTATION, AND CUSHMAN & WAKEFIELD IS UNDER NO OBLIGATION TO SUBSEQUENTLY CORRECT IT IN THE EVENT OF ERRORS. PD-184058