

FOR SUB LEASE  
1218 3<sup>rd</sup> Avenue  
Seattle, WA



## OUTSTANDING CREATIVE SPACE

### SPACE PROFILE

Size: **9,750 Rentable Square Feet**  
Floor(s): **3<sup>rd</sup>**  
Rate: **Negotiable**  
Availability: **Upon Landlord's Consent**  
Term: **Through 2/28/2026**

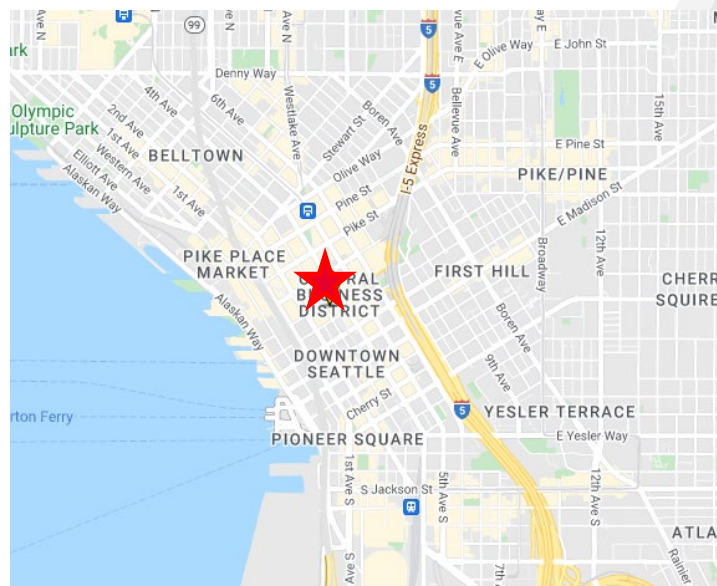
### KEY HIGHLIGHTS

- Central location
- Creative office space
- Originally built out as creative classroom space but could work well for a variety of open plan users
- Furniture may be available
- Proximity to many amenities

### Contact

WILL CARROLL  
+1 206 521 0244  
[will.carroll@cushwake.com](mailto:will.carroll@cushwake.com)

ROBYN HORN  
+1 206 521 0243  
[robyn.horn@cushwake.com](mailto:robyn.horn@cushwake.com)



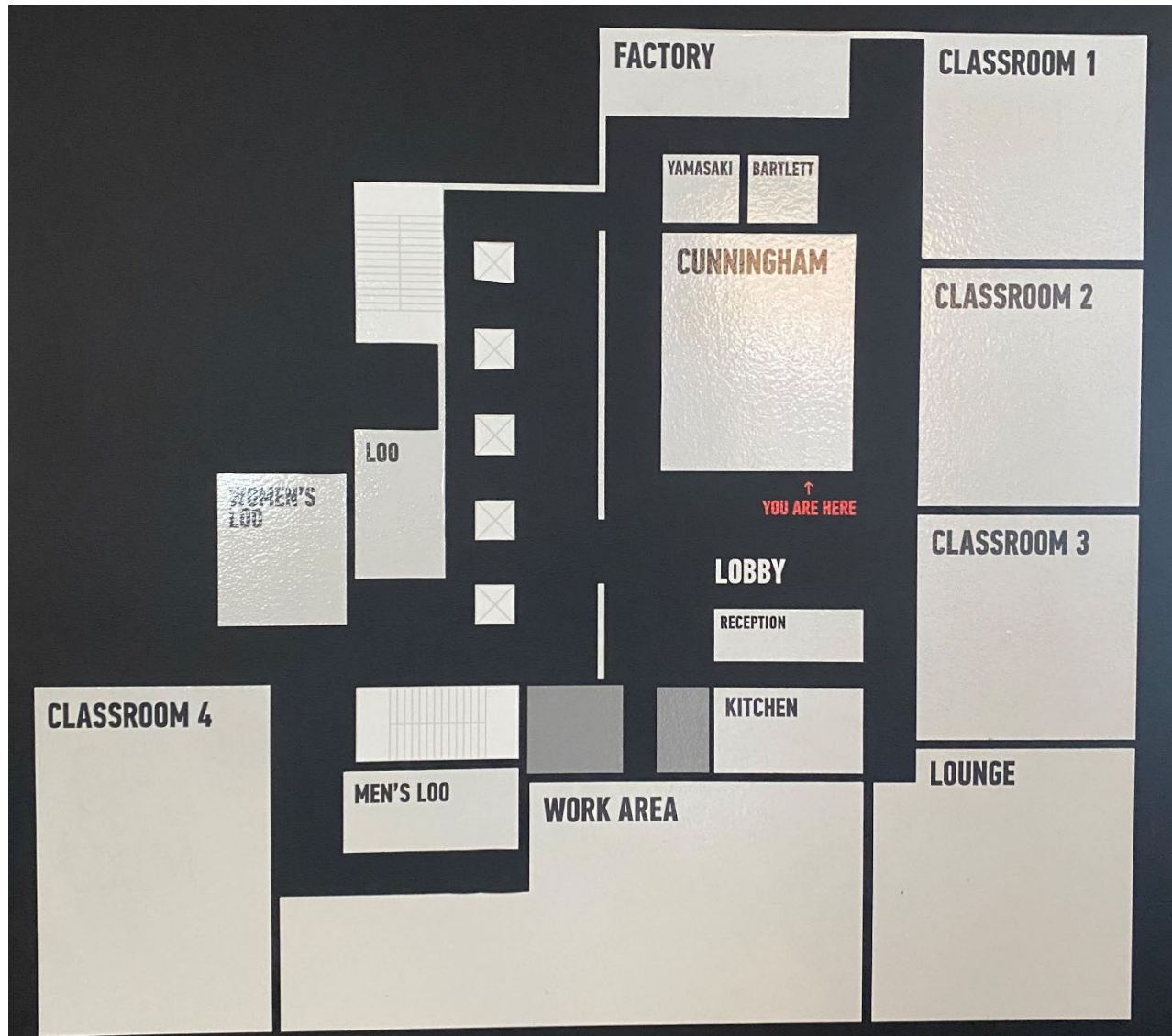
[VIEW VIRTUAL  
TOUR](#)



FOR SUB LEASE  
**1218 3<sup>rd</sup> Avenue**  
Seattle, WA



**3<sup>rd</sup> FLOOR**  
9,750 sf

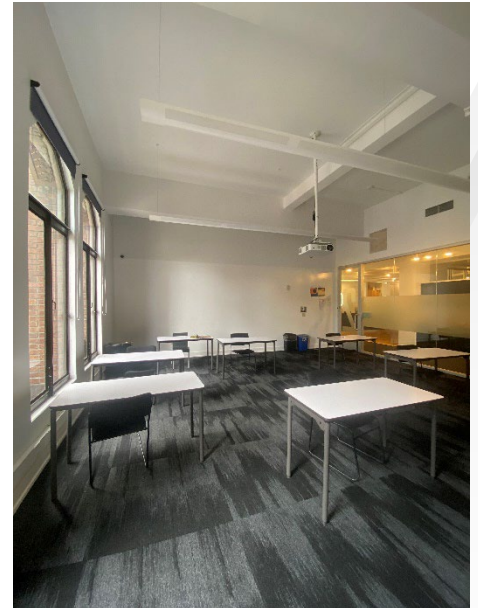
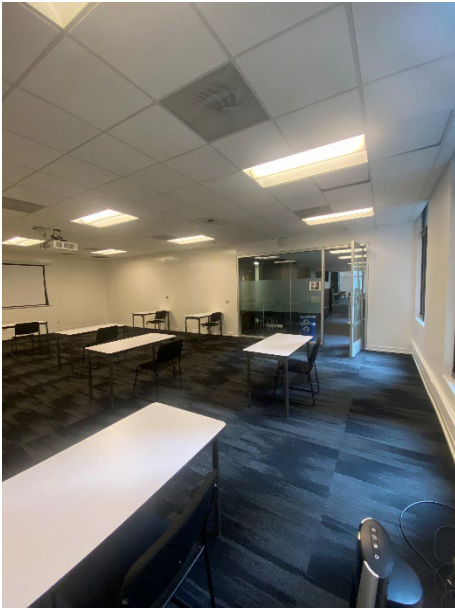
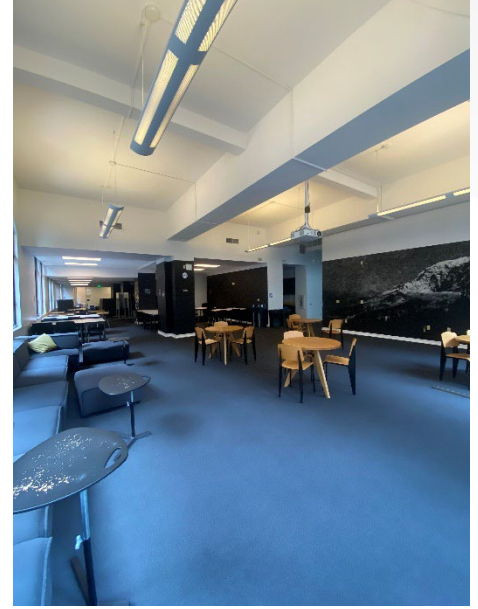


**Contact**

WILL CARROLL  
+1 206 521 0244  
[will.carroll@cushwake.com](mailto:will.carroll@cushwake.com)

ROBYN HORN  
+1 206 521 0243  
[robyn.horn@cushwake.com](mailto:robyn.horn@cushwake.com)

FOR SUB LEASE  
1218 3<sup>rd</sup> Avenue  
Seattle, WA



## Contact

WILL CARROLL  
+1 206 521 0244  
[will.carroll@cushwake.com](mailto:will.carroll@cushwake.com)

ROBYN HORN  
+1 206 521 0243  
[robyn.horn@cushwake.com](mailto:robyn.horn@cushwake.com)



[VIEW VIRTUAL  
TOUR](#)