



CUSHMAN &
WAKEFIELD

SITE

FOR SALE

HOGAN ROAD &
THORNTON ROAD

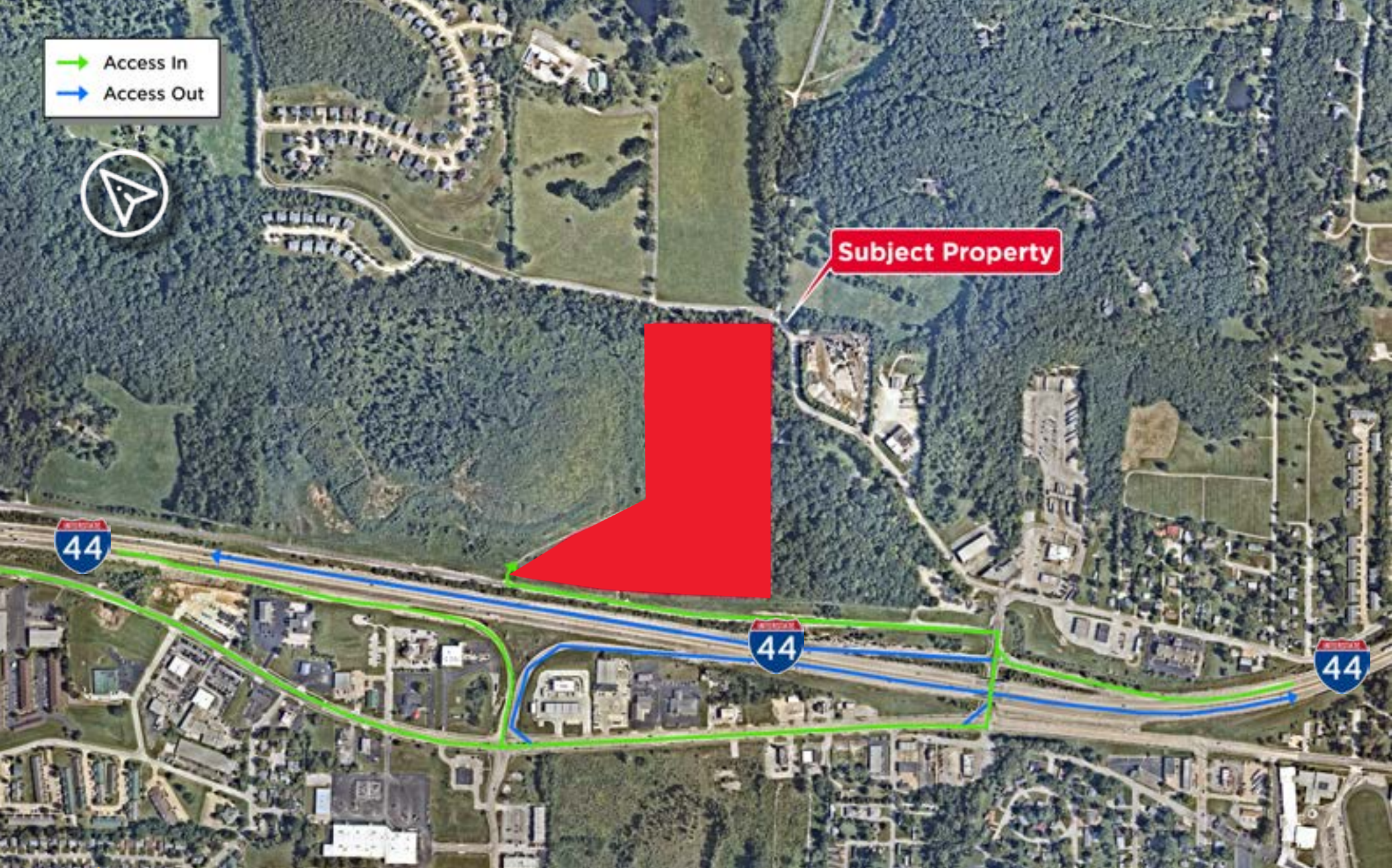
PACIFIC, MO 63069





SALE PRICE: \$2,175,796 (\$2.49/SF)

- Excellent visibility to I-44
- Traffic count: 26,736 VPD
- 1,600 feet of frontage
- Direct access to all utilities on site (at Thornton Rd)
- Zoning: C-2
- Can be subdivided
- 10 acres level & pad/development ready

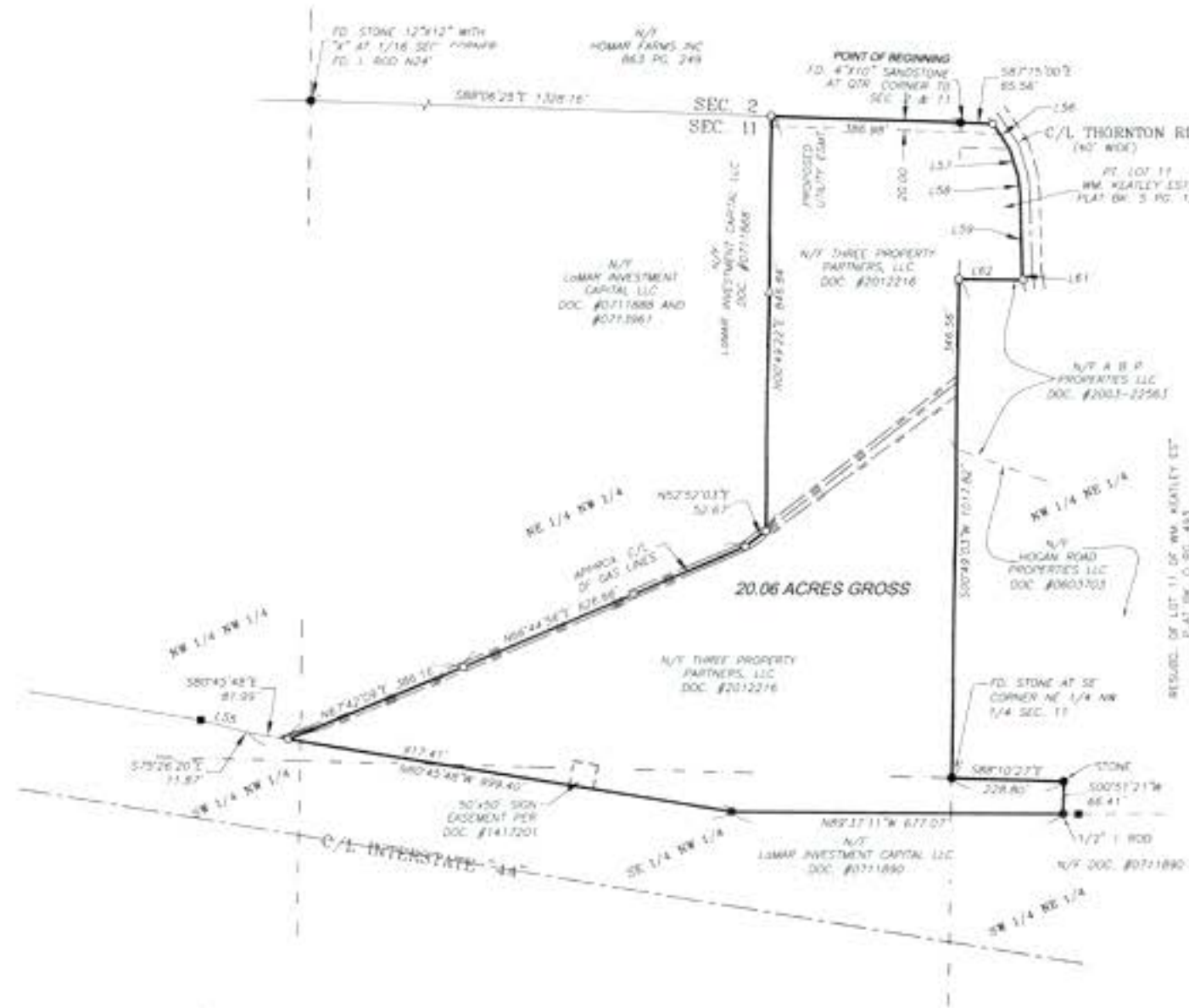


20.06 ACRES IN PACIFIC, MO

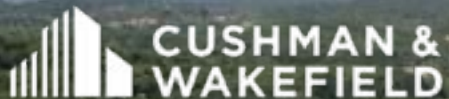
SURVEY & ADD'L INFO

AVAILABLE REPORTS

- Boundary Survey
- Concept Plans
- Water & Sewer Infrastructure Plans & Estimates
- Demographics
- Drive Time Maps
- Traffic Volume Map
- Pacific C-2 Zoning Code
- Geotechnical
- Compaction
- Erosion Control



20.06 ACRES IN PACIFIC, MO



©2025 Cushman & Wakefield. All rights reserved. The information contained in this communication is strictly confidential. This information has been obtained from sources believed to be reliable but has not been verified. NO WARRANTY OR REPRESENTATION, EXPRESS OR IMPLIED, IS MADE AS TO THE CONDITION OF THE PROPERTY (OR PROPERTIES) REFERENCED HEREIN OR AS TO THE ACCURACY OR COMPLETENESS OF THE INFORMATION CONTAINED HEREIN, AND SAME IS SUBMITTED SUBJECT TO ERRORS, OMISSIONS, CHANGE OF PRICE, RENTAL OR OTHER CONDITIONS, WITHDRAWAL WITHOUT NOTICE, AND TO ANY SPECIAL LISTING CONDITIONS IMPOSED BY THE PROPERTY OWNER(S). ANY PROJECTIONS, OPINIONS OR ESTIMATES ARE SUBJECT TO UNCERTAINTY AND DO NOT SIGNIFY CURRENT OR FUTURE PROPERTY PERFORMANCE.

For more information,
please contact:

Keith Ziercher

Director
+1 314 746 0384
keith.ziercher@cushwake.com

Jim Mosby

Vice Chair
+1 314 746 0316
jim.mosby@cushwake.com

7700 Forsyth Blvd, St. Louis, MO 63105
+1 314 862 7100
cushmanwakefield.com