



**2646 HIGHWAY 109**  
**WILDWOOD, MO 63040**



- 11,068 SF two story building on 0.22 acre
- Elevator served
- Part of the Westridge Office Park
- Abundant common area parking
- Built in 2003
- Roof replaced in 2016
- South of Manchester Road and MO-100
- **Contact Broker for Pricing**

## BUILDING FEATURES

- Ideal Investment or Owner/User Opportunity!
- Across from Wildwood YMCA and St. Louis Community College Wildwood Campus



**MATT EASTIN, SIOR, CCIM**  
+1 314 746 0350  
matt.eastin@cushwake.com

**CHRISTY WIRTH, SIOR, CCIM**  
+1 314 813 9524  
christy.wirth@cushwake.com

**KYLE PERSHING**  
+1 314 236 5471  
kyle.pershing@cushwake.com

**cushmanwakefield.com**

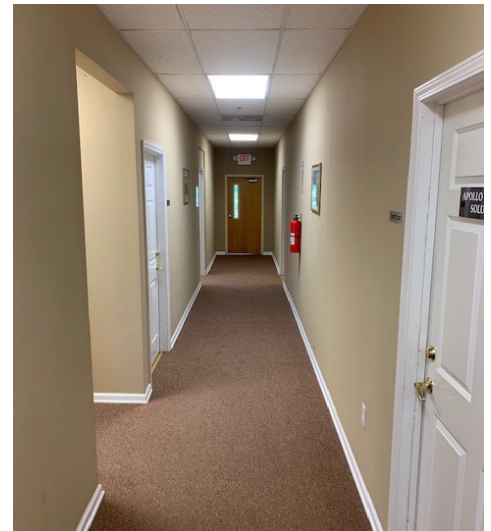
**2646 HIGHWAY 109**  
WILDWOOD, MO 63040



AERIAL PHOTO



INTERIOR PHOTOS



FOR MORE INFORMATION, PLEASE CONTACT:

**MATT EASTIN, SIOR, CCIM**  
+1 314 746 0350  
matt.eastin@cushwake.com

**CHRISTY WIRTH, SIOR, CCIM**  
+1 314 813 9524  
christy.wirth@cushwake.com

**KYLE PERSHING**  
+1 314 236 5471  
kyle.pershing@cushwake.com

[cushmanwakefield.com](http://cushmanwakefield.com)

©2025 Cushman & Wakefield. All rights reserved. The information contained in this communication is strictly confidential. This information has been obtained from sources believed to be reliable but has not been verified. NO WARRANTY OR REPRESENTATION, EXPRESS OR IMPLIED, IS MADE AS TO THE CONDITION OF THE PROPERTY (OR PROPERTIES) REFERENCED HEREIN OR AS TO THE ACCURACY OR COMPLETENESS OF THE INFORMATION CONTAINED HEREIN, AND SAME IS SUBMITTED SUBJECT TO ERRORS, OMISSIONS, CHANGE OF PRICE, RENTAL OR OTHER CONDITIONS, WITHDRAWAL WITHOUT NOTICE, AND TO ANY SPECIAL LISTING CONDITIONS IMPOSED BY THE PROPERTY OWNER(S). ANY PROJECTIONS, OPINIONS OR ESTIMATES ARE SUBJECT TO UNCERTAINTY AND DO NOT SIGNIFY CURRENT OR FUTURE PROPERTY PERFORMANCE.