

FOR LEASE

West End Business Center

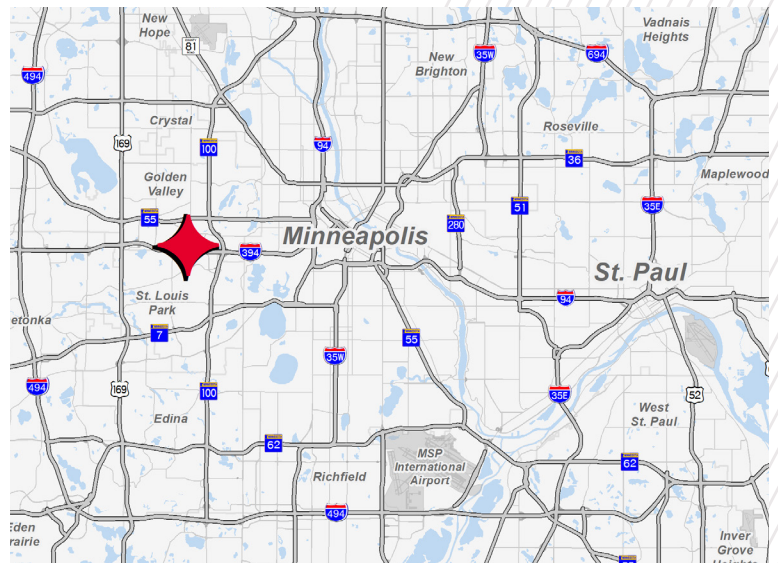
715 Florida Ave S, Golden Valley, MN



2,800 SF AVAILABLE

PROPERTY HIGHLIGHTS

- Infill industrial opportunity located at I-394 and Hwy 100
- Minutes from the West End and Downtown Minneapolis
- Large truck court
- Local/responsive ownership



Contact

BRENT MASICA
Executive Managing Director
+1 952 893 8231
brent.masica@cushwake.com

DANNY MCNAMARA
Senior Director
+1 952 893 8895
danny.mcnamara@cushwake.com

FOR LEASE

West End Business Center

715 Florida Ave S, Golden Valley, MN



PROPERTY FEATURES

Building Size	130,000 SF
Parcel Size	9.87 Acres

RATES

Rates:	\$15.00 PSF Gross
--------	-------------------

SPACE AVAILABLE

Suite	Total	Main Level Office	Available
100	2,800 SF	2,800 SF	Now

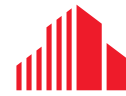


©2025 Cushman & Wakefield. All rights reserved. The information contained in this communication is strictly confidential. This information has been obtained from sources believed to be reliable but has not been verified. No warranty or representation, express or implied, is made as to the condition of the property (or properties) referenced herein or as to the accuracy or completeness of the information contained herein, and same is submitted subject to errors, omissions, change of price, rental or other conditions, withdrawal without notice, and to any special listing conditions imposed by the property owner(s). Any projections, opinions or estimates are subject to uncertainty and do not signify current or future property performance.

FOR LEASE

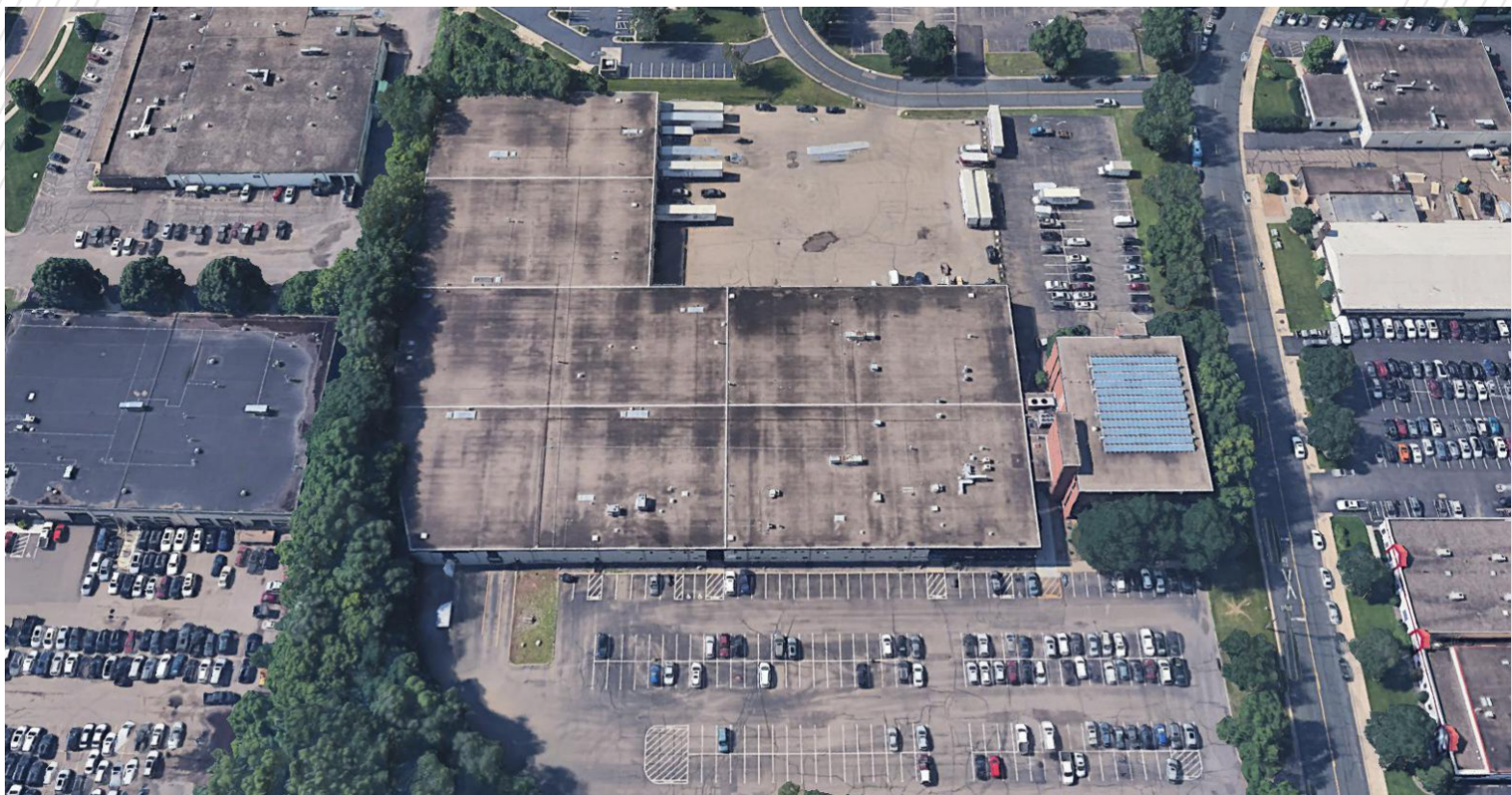
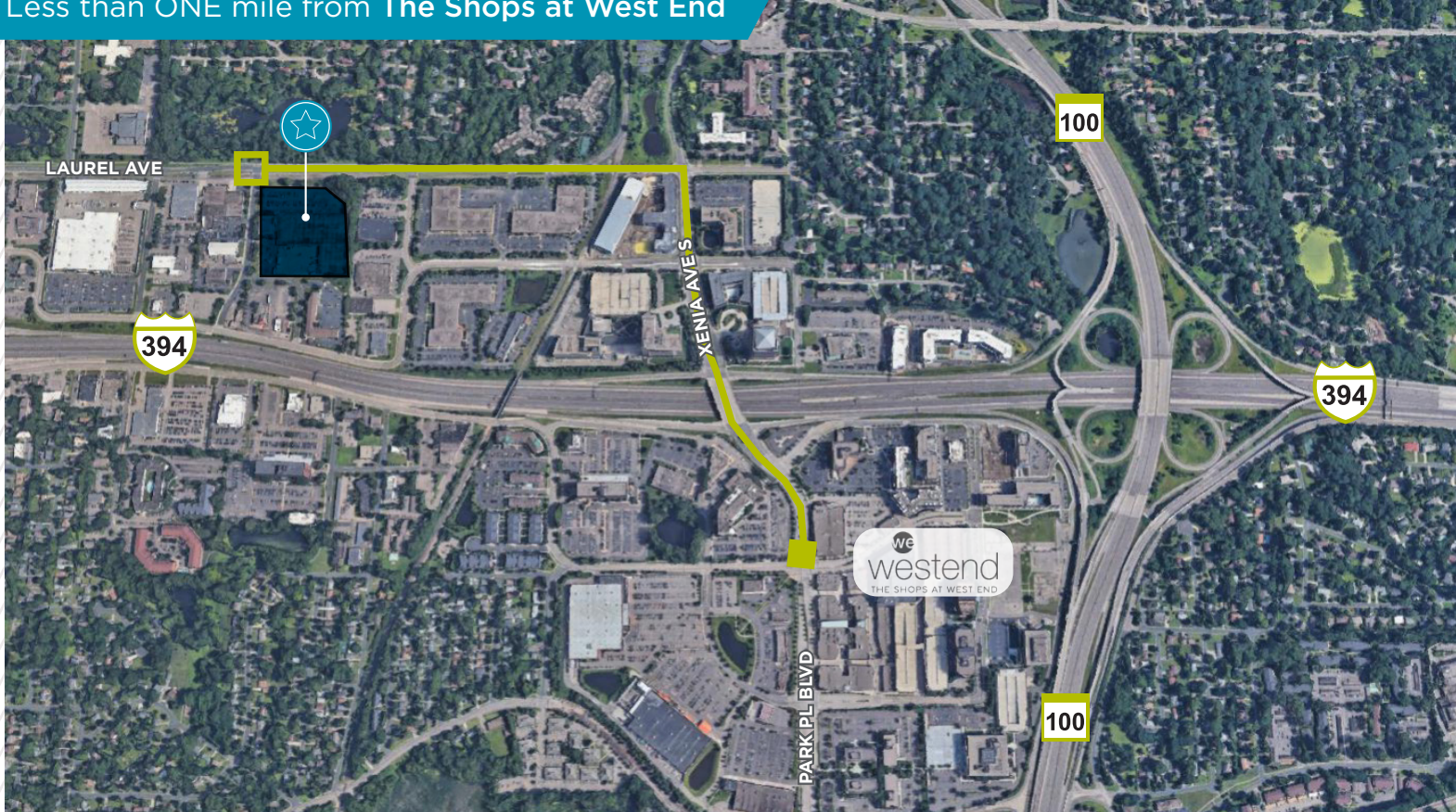
West End Business Center

715 Florida Ave S, Golden Valley, MN



**CUSHMAN &
WAKEFIELD**

Less than ONE mile from The Shops at West End



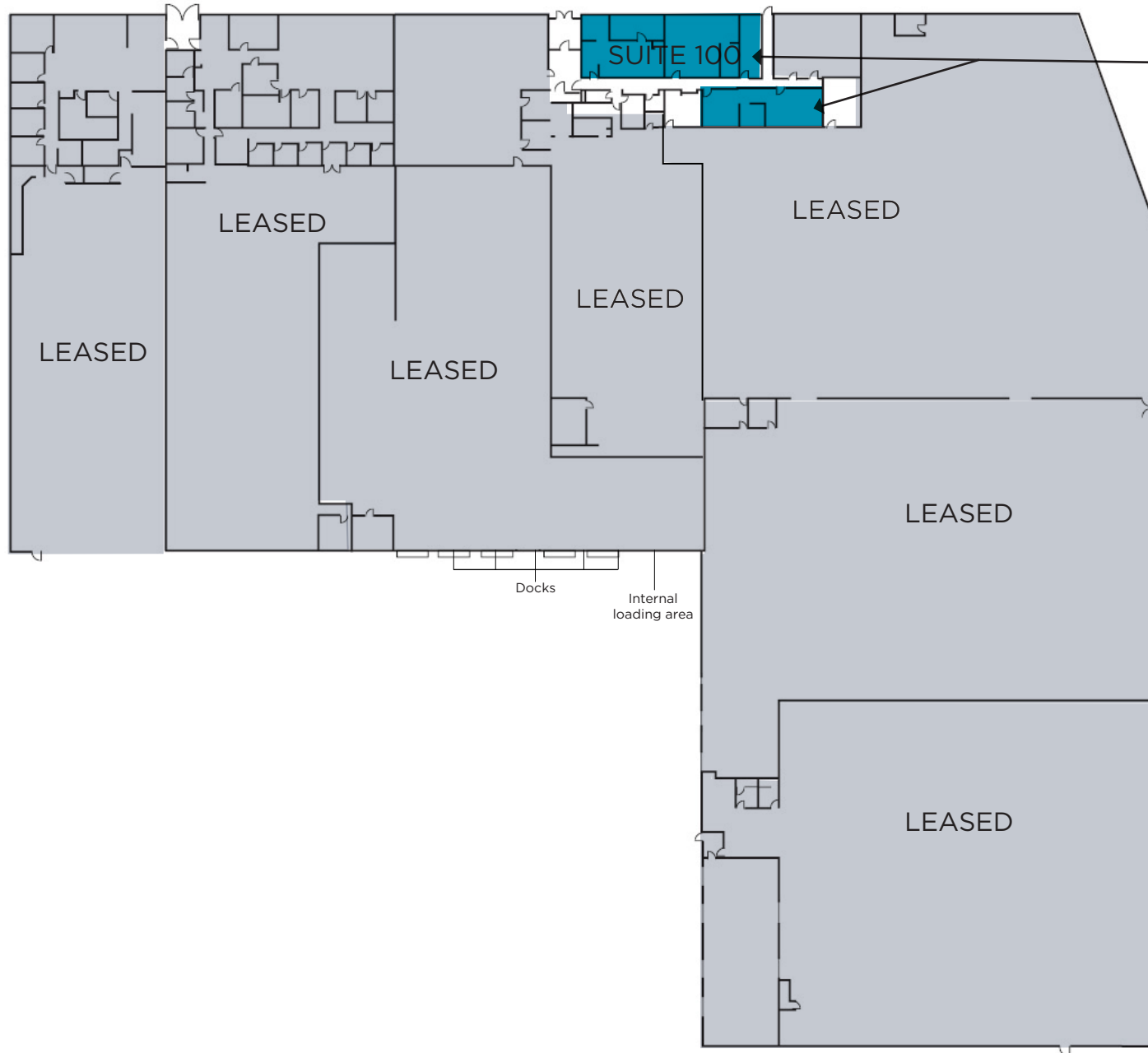
FLOOR PLAN

West End Business Center

715 Florida Ave S, Golden Valley, MN



MAIN LEVEL FLOOR PLAN



Suite 100

2,800 SF Office Total

Available Now