

CREATIVE URBAN
DEVELOPMENT

SLOANS
1525



1525 Raleigh Street

CLASS A OFFICE FOR LEASE

W. Ryan Stout
303.813.6448
ryan.stout@cushwake.com

Nathan J. Bradley
303.813.6444
nate.bradley@cushwake.com

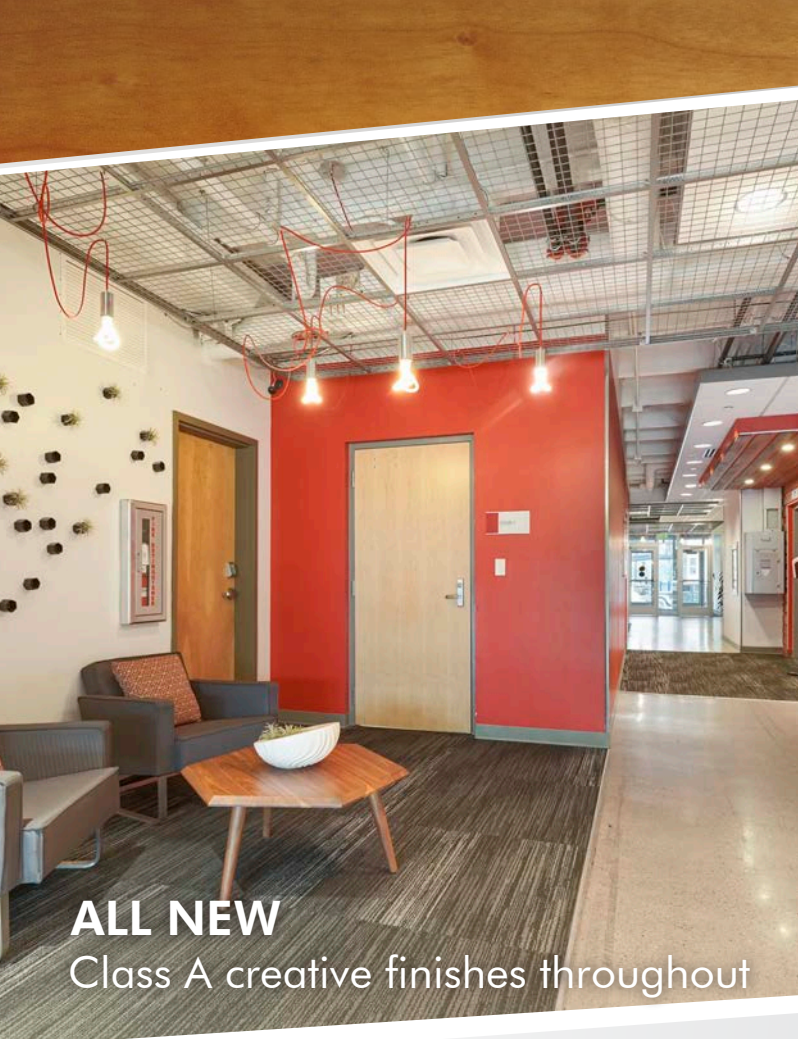
Zachary T. Williams
303.813.6474
zach.williams@cushwake.com



CUSHMAN &
WAKEFIELD

2 FLOORS SLOANS

1525



ALL NEW

Class A creative finishes throughout



| | |
|----------------------|-----------|
| Building SF: | 50,000 SF |
| Year Built: | 1972 |
| Typical Floor Plate: | 10,000 SF |
| Stories: | 5 |
| Elevators: | 2 |
| Parking: | 3 : 1,000 |

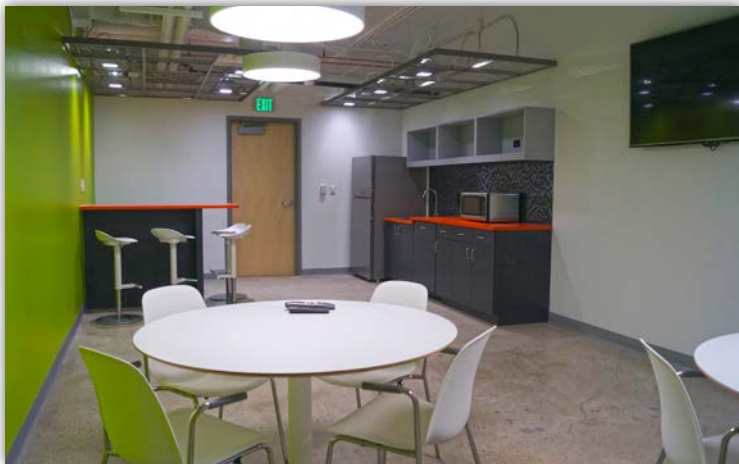
1525 Raleigh Street



SLOANS NEIGHBORHOOD DEVELOPMENT
Walkable amenities & housing for car free living



PANORAMIC DOWNTOWN & MOUNTAIN VIEWS



BUILDING KITCHEN & LOUNGE
Common tenant area



SLOANS LAKE PARK
Direct access to scenic trails and picnic areas

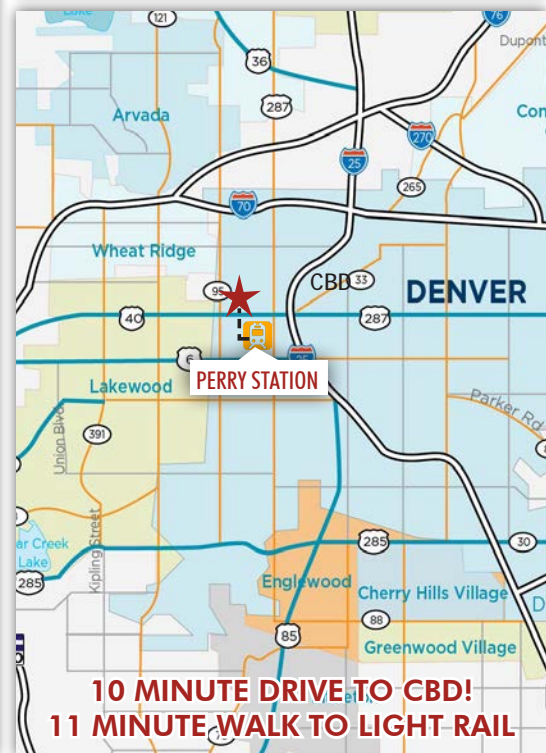
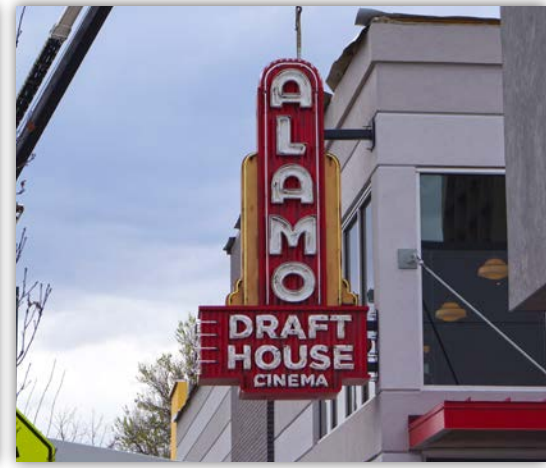


BIKE STORAGE
Safe storage for bike commuters



BUILDING CONFERENCE ROOM
Large conference seats 12+

INCREDIBLE AMENITY RICH LOCATION



W. Ryan Stout
303.813.6448
ryan.stout@cushwake.com

Nathan J. Bradley
303.813.6444
nate.bradley@cushwake.com

Zachary T. Williams
303.813.6474
zach.williams@cushwake.com

