

FOR LEASE

Owned and Operated by



1801 WEST HAWTHORNE LANE

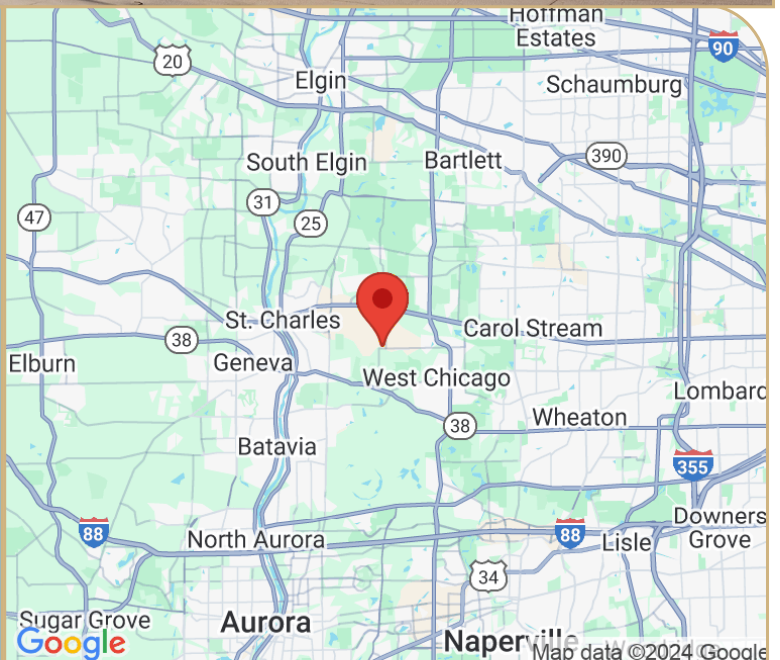
West Chicago, Illinois

±145,663 SF FOR LEASE



FOR LEASE

Space	±145,663 SF
Office	±4,725 SF
Availability	Q2 2026
Clear Height	24'
Loading	15 Docks; 1 Drive-In Door
Parking	40 Cars (Expandable) & 32 Trailers



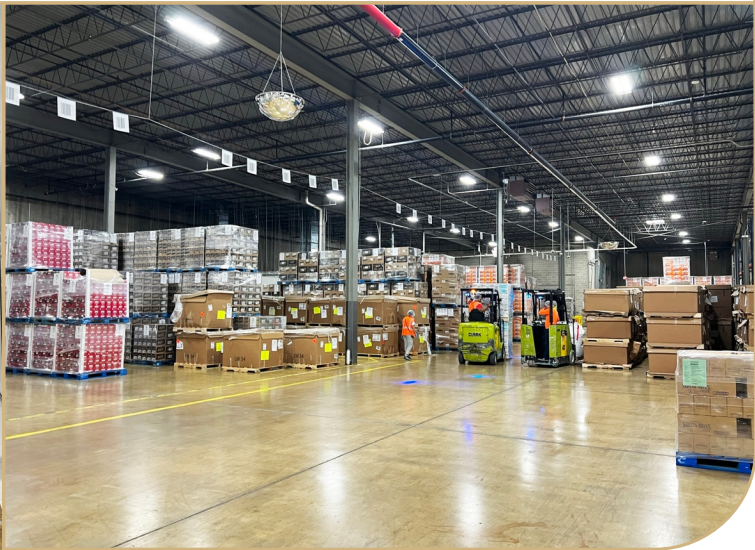
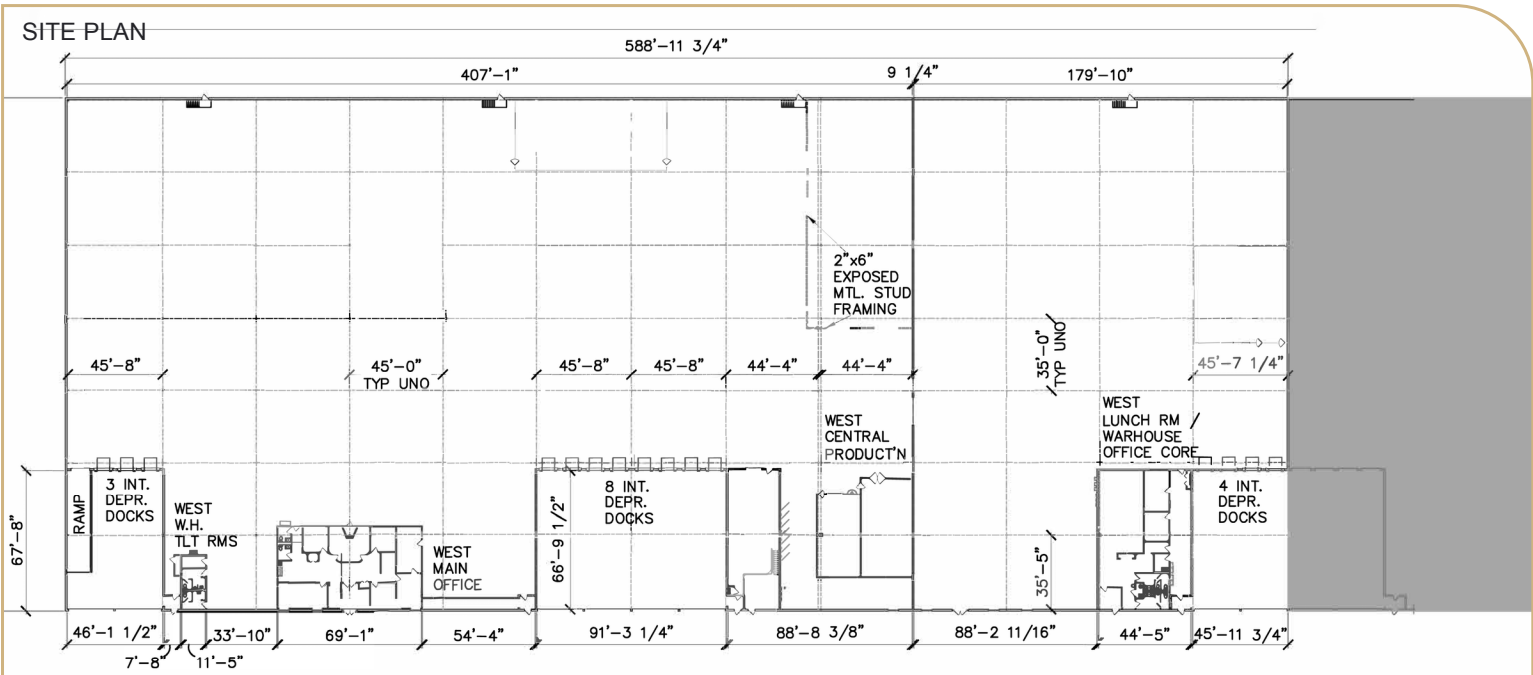
LEASING INFO & CONTACT

Michael Magliano

(847) 518-3259 / michael.magliano@cushwake.com



The information contained herein has been obtained from sources believed to be reliable but is not warranted. We cannot be responsible for errors, omissions, withdrawal, or prior lease or sale.



AVAILABLE SPACE HIGHLIGHTS

Food Grade Facility (SQF Level 3)
40,000 SF Temperature Controlled
Column Spacing 35' x 45'
Fully Sprinklered
Zoned Industrial
Pre-Cast Concrete Construction
LED Lighting
Floor Drains

ESTIMATED OPEX

CAM:	\$0.39 PSF
RET:	\$1.21 PSF
INS:	\$0.11 PSF
UTIL:	\$0.07 PSF
MGMT Fee:	3% Gross Receipts

