



# PAVILION MEDICAL CENTER

320 E Fontanero Street | Colorado Springs, CO 80906



CUSHMAN &  
WAKEFIELD

Colorado Springs  
Commercial

**PETER SCOVILLE**

Principal  
+1 719 418 4063  
pscoville@coscommercial.com

**GREG PHANEUF**

Principal  
+1 719 418 4064  
gphaneuf@coscommercial.com





# PAVILION MEDICAL CENTER

320 E Fontanero Street | Colorado Springs, CO 80906

Building Size:	44,166 RSF
Available Space:	Suite 101: 5,561 RSF Suite 200: 6,746 RSF - Dental Office Suite 302: 2,510 RSF - Dental Office Suite 307: 1,542 RSF
Lease Rate:	\$18.50 per RSF NNN
NNN Expenses:	\$12.80 per RSF (2025 estimate)
Parking Ratio:	4.5 spaces per 1,000 RSF
Tenant Improvements:	\$50.00± per RSF

Located at Fontanero Street and Wahsatch Avenue, in close proximity to I-25 and Fillmore Street, Pavilion Medical Center is easily accessible to doctors and patients from all points within the Colorado Springs Metropolitan Area. The property is ideally situated between two major hospitals: Penrose Hospital to the north and Memorial Hospital to the south. Penrose Hospital, located at 2222 N Nevada Avenue, is the anchor of Penrose-St. Francis Health Services. With 238 beds and 16 surgical suites, Penrose Hospital provides secondary and tertiary (high-tech) medical-surgical services, emphasizing elective and outpatient care. Memorial Hospital, located at 1400 E Boulder Road, is 413-bed hospital that has been recognized nationally for quality, research and outcomes.

- **New ownership**
- **Common area updates being completed**
- **High parking ratio**
- **Park-like setting; Shooks Run Trail bisects the property**
- **On-site porter services**
- **Expansive window lines with excellent natural light and mountain views**
- **1/2 mile from Penrose Hospital**

# 1<sup>st</sup> FLOOR



Available  
Suite 101  
5,561 RSF

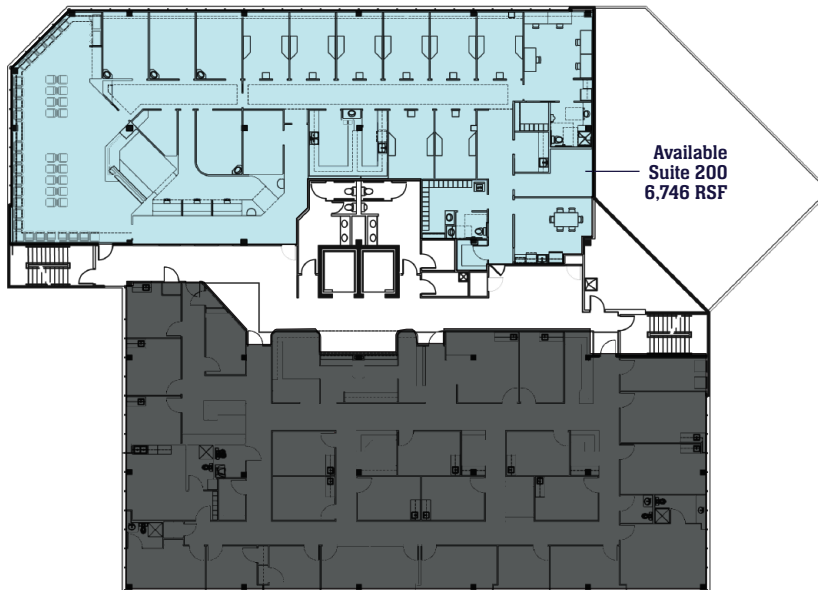


\*Conceptual plan shown. Furniture and equipment are for illustrative purposes only.

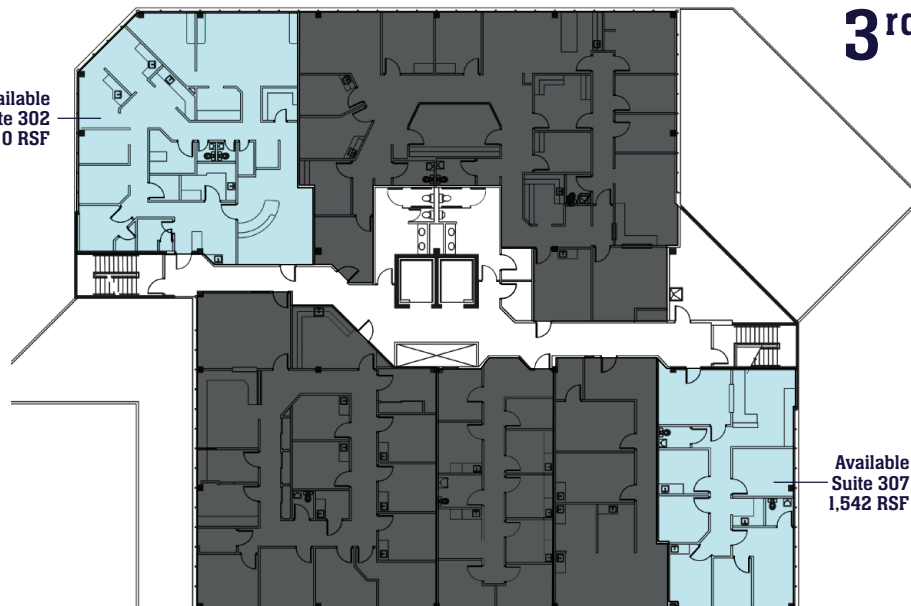
# 2<sup>nd</sup> FLOOR



Available  
Suite 200  
6,746 RSF



Available  
Suite 302  
2,510 RSF

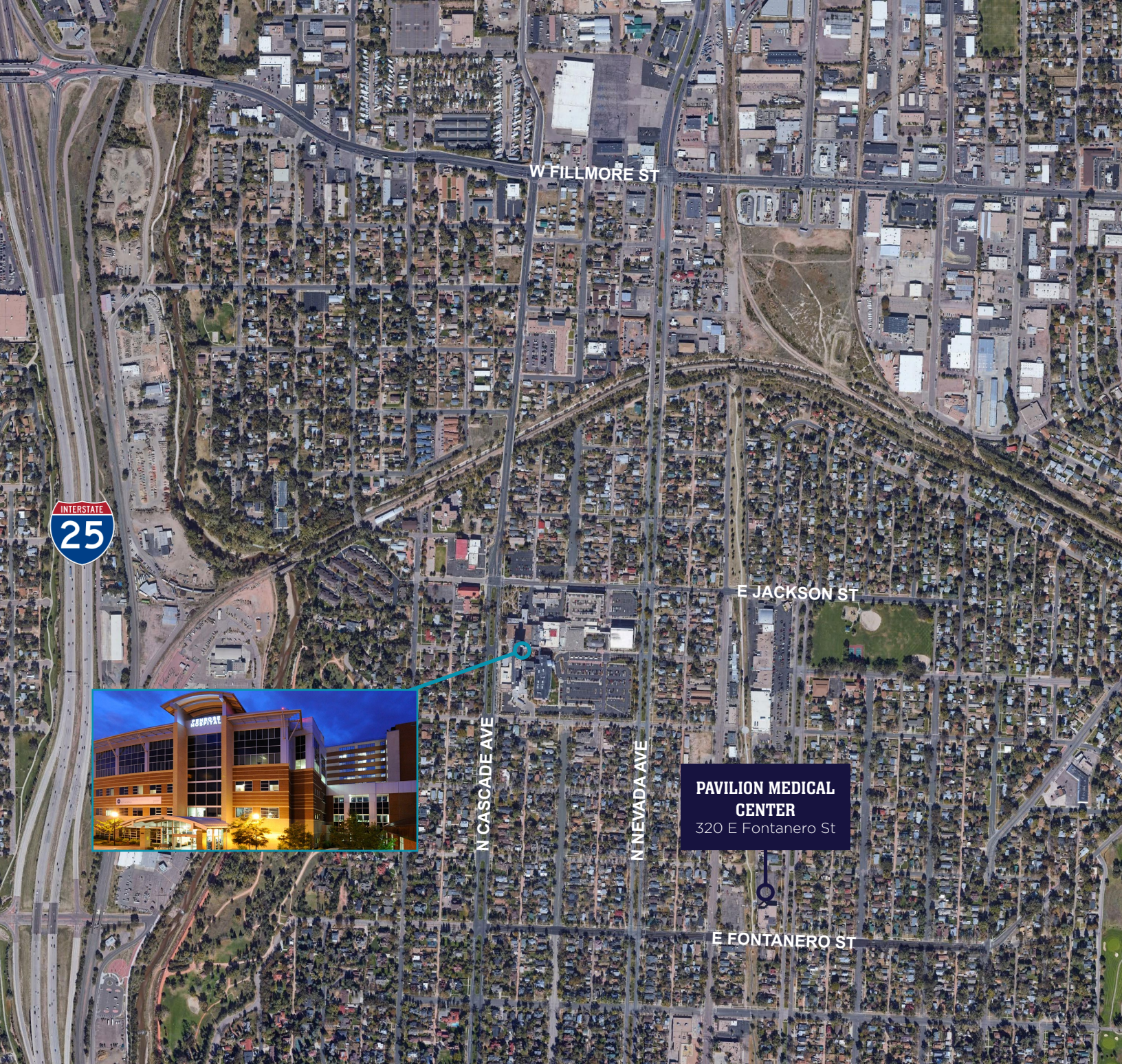


# 3<sup>rd</sup> FLOOR



Available  
Suite 307  
1,542 RSF





**PETER SCOVILLE**

Principal  
+1 719 418 4063  
pscoville@coscommercial.com

**GREG PHANEUF**

Principal  
+1 719 418 4064  
gphaneuf@coscommercial.com



**Colorado Springs  
Commercial**

90 S Cascade Avenue, Suite 1150  
Colorado Springs, CO 80903  
coscommercial.com