

FLEX OFFICE SPACE FOR LEASE

420 TESCONI CIRCLE UNIT A

SANTA ROSA, CA

Niels Von Doepp

Director

+1 415 451 2403

niels.vondoepp@cushwake.com

Lic #: 01447530

Trevor Buck

Executive Managing Director

+1 415 451 2436

trevor.buck@cushwake.com

Lic #: 01255462

420 TESCONI CIRCLE

UNIT A



PROPERTY HIGHLIGHTS

Unit A is a ground floor corner suite with 6 private offices, a bullpen, employee break room, private bathrooms, and storage. The space features a glass window line, business park setting, great monument signage, and on-site parking. The building is in a prime central Santa Rosa location with close proximity to the Sonoma Marin SMART Train and US 101.

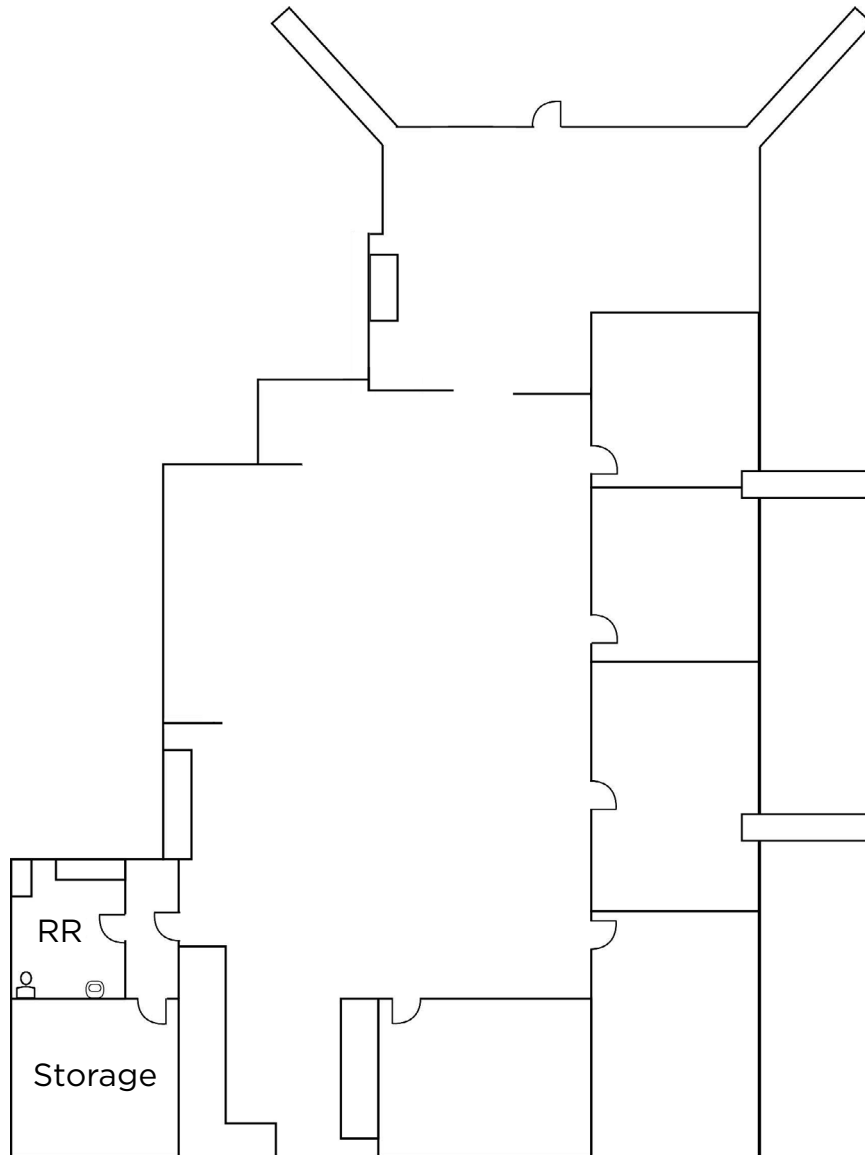
PROPERTY FEATURES

Available Space:	± 2,450 SF	Parking Spaces:	48
Rate:	\$1.50 PSF IG	Class:	B
Zoning:	BP	Year Built:	1979
Parking Ratio:	3.11/1,000		

420 TESCONI CIRCLE

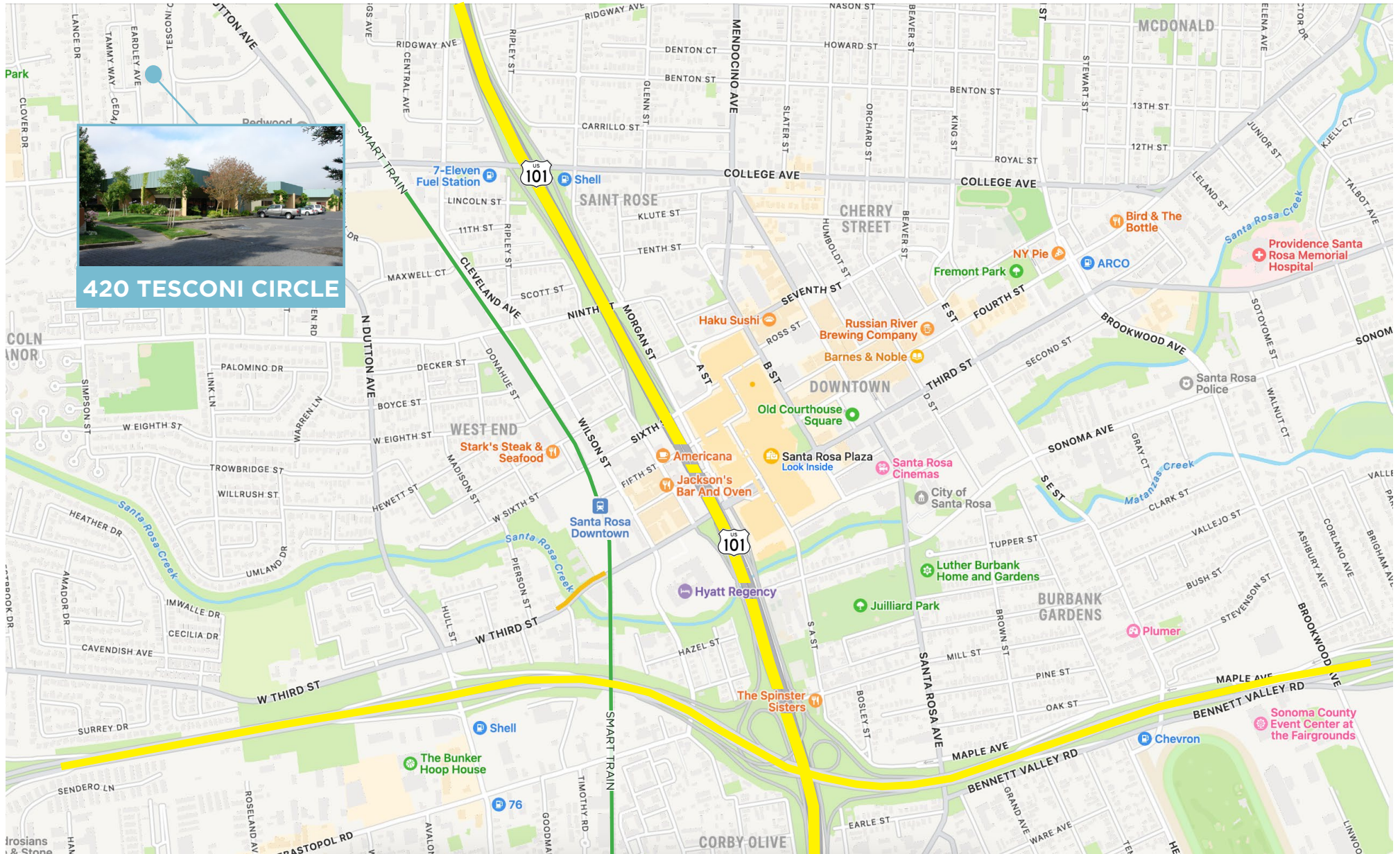
UNIT A

FLOOR PLAN



420 TESCONI CIRCLE

UNIT A





FOR MORE INFORMATION, CONTACT:

Niels Von Doepp

Director

+1 415 451 2403

niels.vondoepp@cushwake.com

Lic #: 01447530

Trevor Buck

Executive Managing Director

+1 415 451 2436

trevor.buck@cushwake.com

Lic #: 01255462

