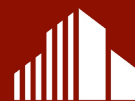


53,183 SF AVAILABLE FOR LEASE

# 395 COCHRANE DRIVE

MARKHAM, ON



**CUSHMAN &  
WAKEFIELD**



# PROPERTY DETAILS

## PROPERTY SUMMARY

- Total Unit Size 53,183 SF
- Office Size: 13%
- Clear Height: 22'
- Bay Size: 30' x 42'
- Shipping: 4 Truck Level | 1 Drive-In Door
- Occupancy Date: January 1st, 2026
- Asking Rate: \$17.50 Net
- T.M.I. (2025): \$3.50

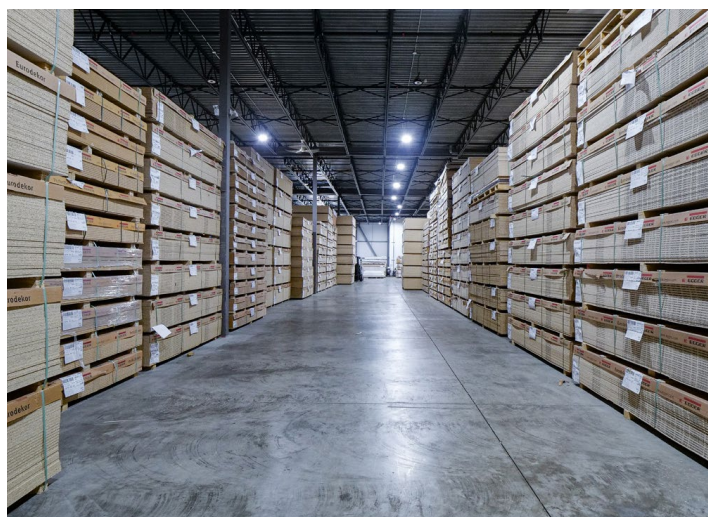
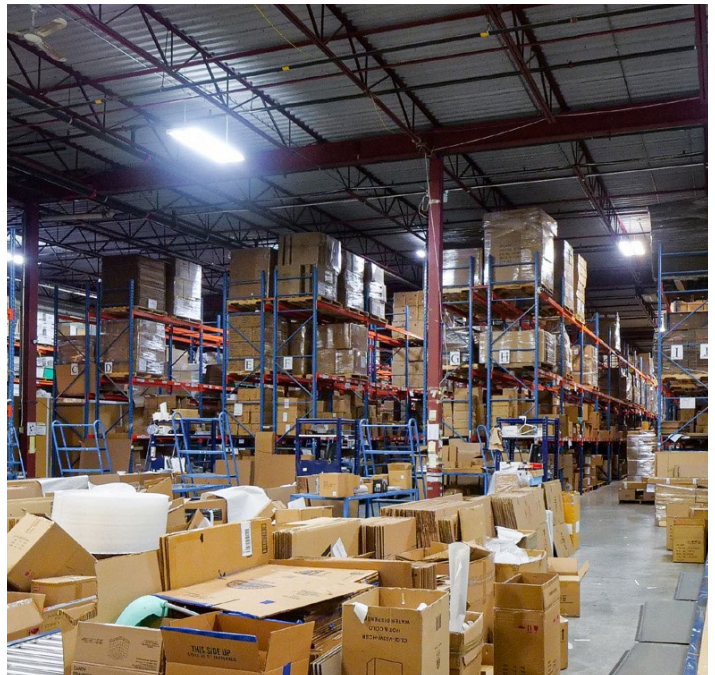
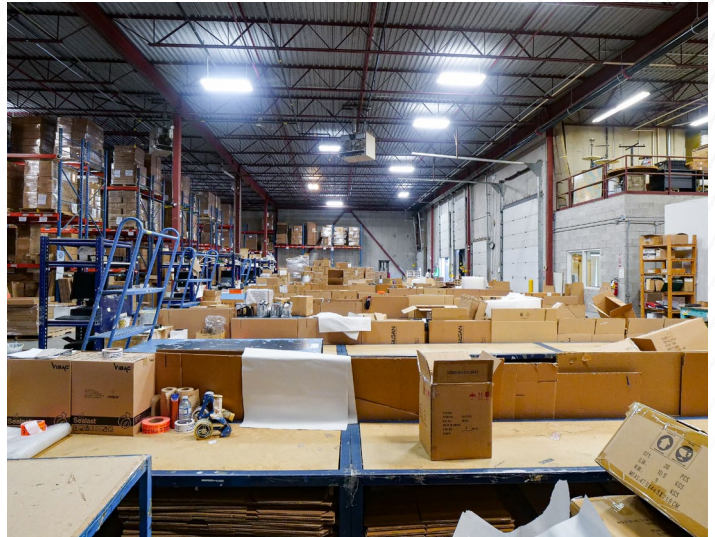
## PROPERTY HIGHLIGHTS

- Rare industrial unit available in Central Markham location with head office appeal
- Prime location with easy access to Highway 404 & 407
- Ample car parking and efficient shipping access
- Motion Censored LED lighting
- Existing racking system available for purchase, speak to Listing Agents





# INTERIOR PHOTOS



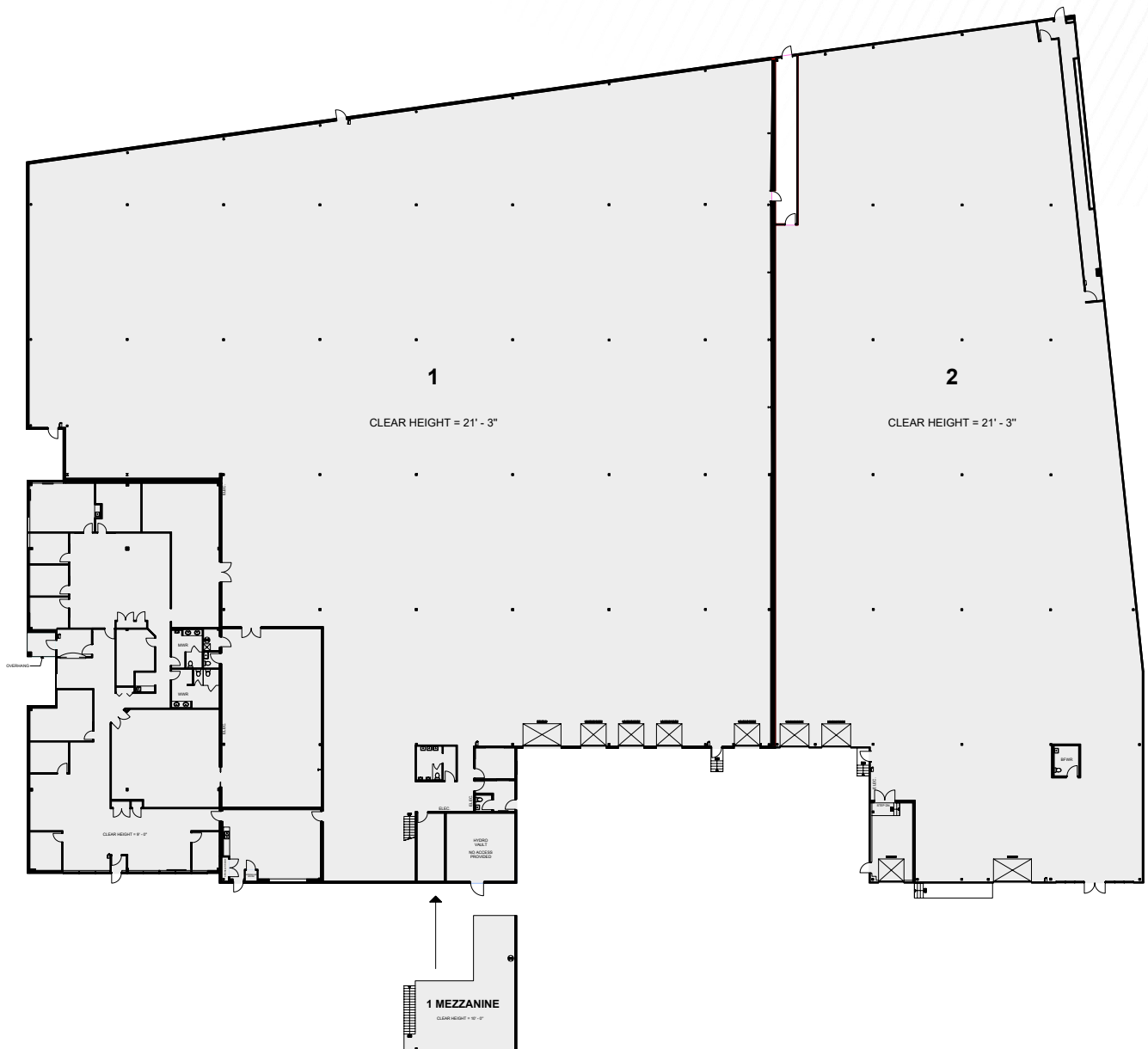


# EXTERIOR PHOTOS

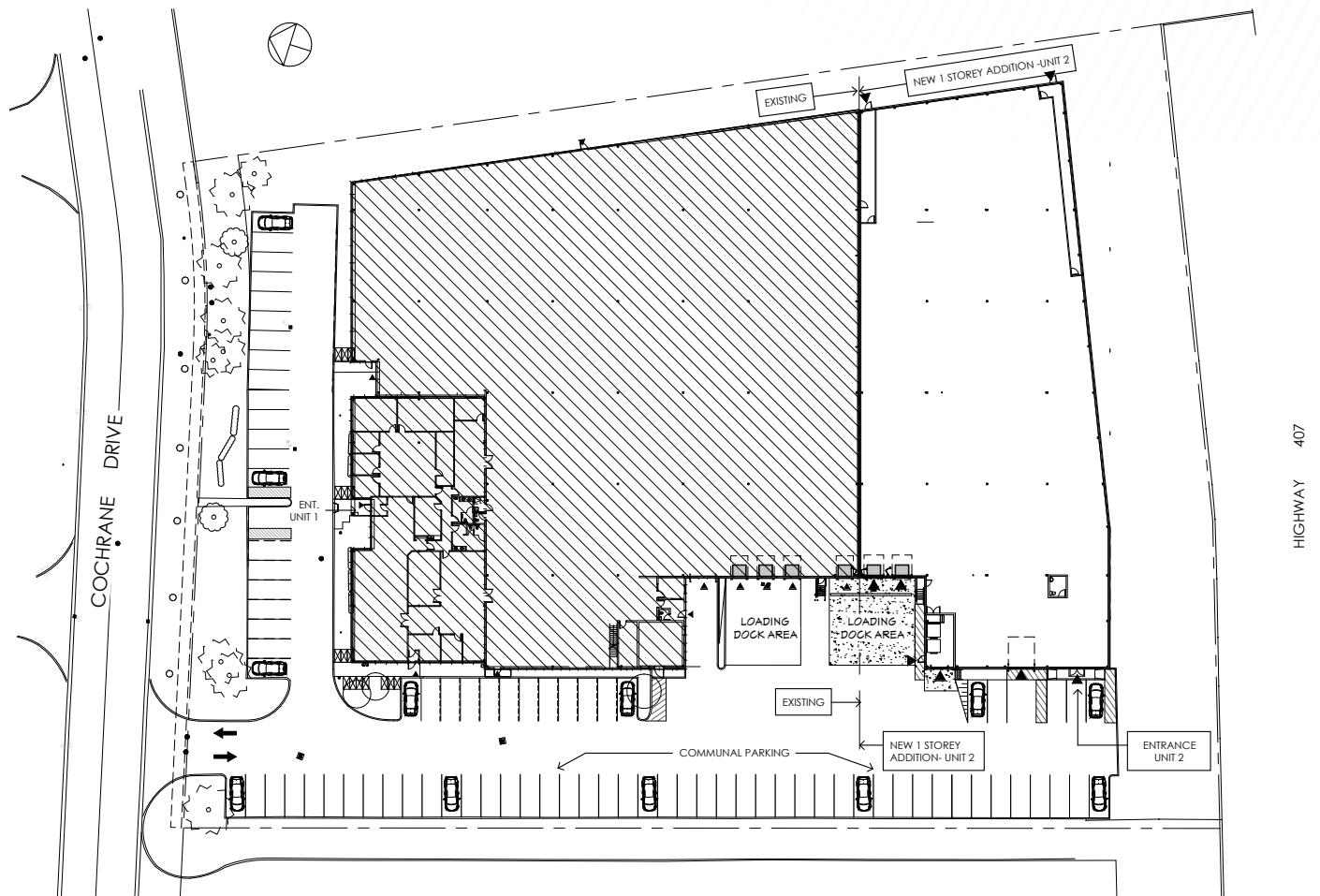




# FLOOR PLAN



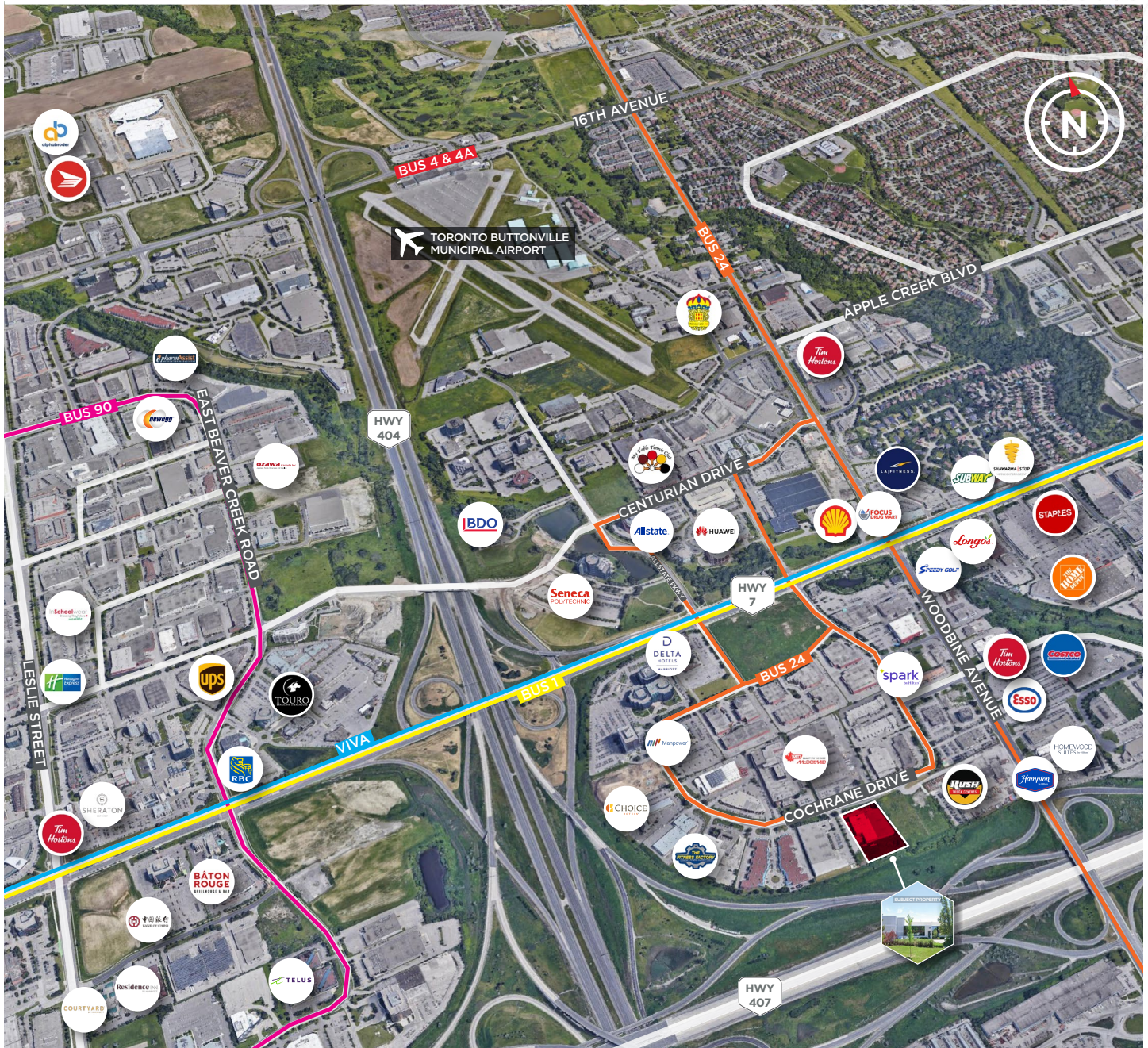
# SITE PLAN



395 COCHRANE DRIVE, MARKHAM, ONTARIO



# AMENITIES AND TRANSIT



## LEGEND | TRANSIT

 BUS 1       BUS 4 & 4A       BUS 24       BUS 90       VIVA



**FOR MORE INFORMATION, PLEASE CONTACT:**

**Patrick Harris**

Senior Vice President

Sales Representative

Mobile: +1 416 359 2551

Patrick.Harris@ca.cushwake.com

**Cushman & Wakefield ULC.**

Brokerage

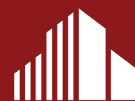
161 Bay Street, Suite 1500

P.O.Box 602

Toronto, ON M5J 2S1 | CANADA



©2025 Cushman & Wakefield. All rights reserved. The information contained in this communication is strictly confidential. This information has been obtained from sources believed to be reliable but has not been verified. NO WARRANTY OR REPRESENTATION, EXPRESS OR IMPLIED, IS MADE AS TO THE CONDITION OF THE PROPERTY (OR PROPERTIES) REFERENCED HEREIN OR AS TO THE ACCURACY OR COMPLETENESS OF THE INFORMATION CONTAINED HEREIN, AND SAME IS SUBMITTED SUBJECT TO ERRORS, OMISSIONS, CHANGE OF PRICE, RENTAL OR OTHER CONDITIONS, WITHDRAWAL WITHOUT NOTICE, AND TO ANY SPECIAL LISTING CONDITIONS IMPOSED BY THE PROPERTY OWNER(S). ANY PROJECTIONS, OPINIONS OR ESTIMATES ARE SUBJECT TO UNCERTAINTY AND DO NOT SIGNIFY CURRENT OR FUTURE PROPERTY PERFORMANCE.



**CUSHMAN &  
WAKEFIELD**