



HUDSON MEDICAL CENTER OFFICE SPACES FOR LEASE
5655 HUDSON DRIVE, HUDSON, OHIO 44236

HIGHLIGHTS

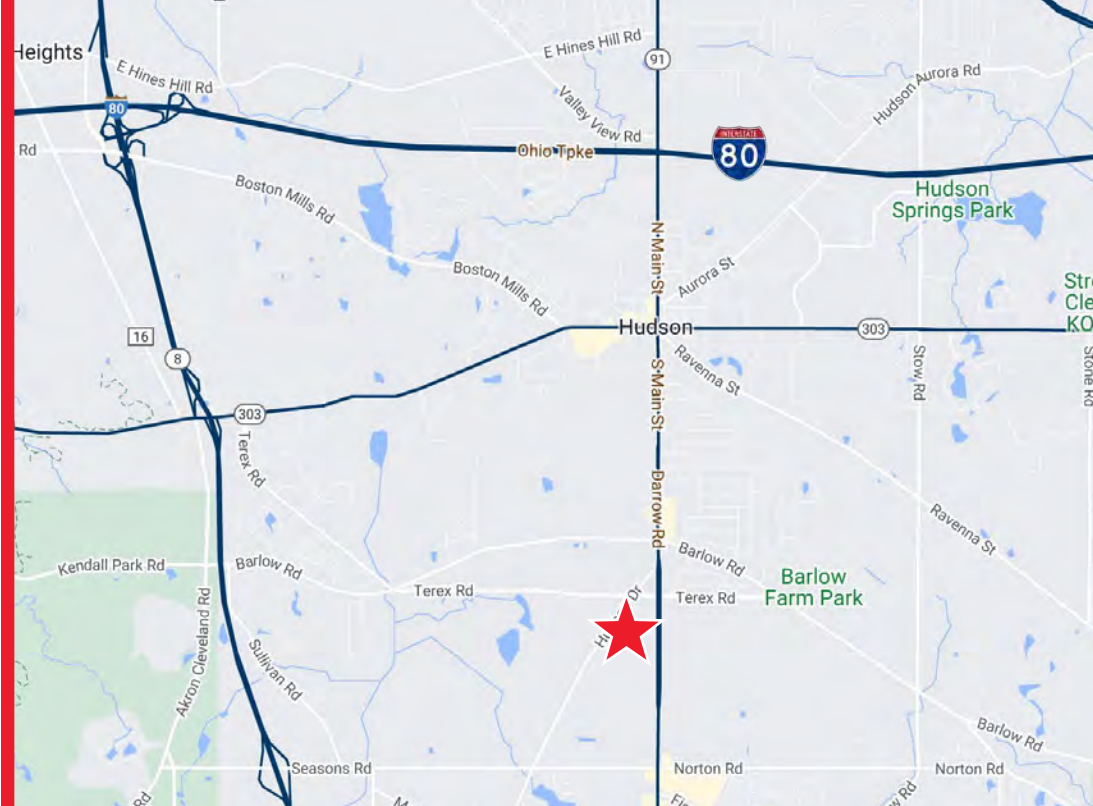
- Naming and building signage rights available
- Two suites with dedicated entrances off building's exterior that significantly increase the visibility of those occupiers
- Monument signage on Hudson Drive and Darrow Road provides great visibility for major tenants
- Prominent medical office building located in the heart of Hudson's professional district
- Adjacent and access to thriving wellness center & spa with pool, daycare on-site, exercise classes and personal training
- Flexible suite sizes that will fit any medical practice needs
- Drop-off/pick-up driveway located at front of building for ease of access

AVAILABILITY

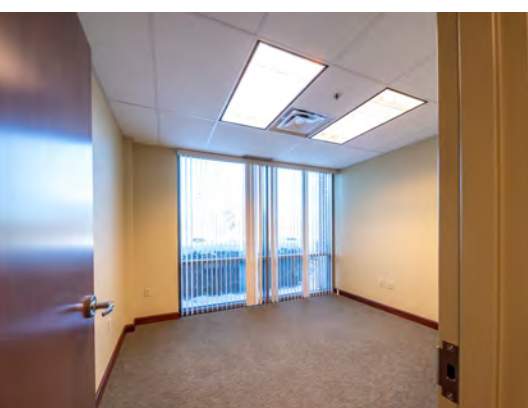
Suite	Size	Max Contiguous
*101	8,707 SF	8,707 SF
*110	5,485 SF	9,680 SF
*130	4,195 SF	9,680 SF
*200	13,111 SF	26,113 SF
205	2,314 SF	26,113 SF
210	8,644 SF	*26,113 SF
215	1,218 SF	26,113 SF
220	826 SF	26,113 SF
*310	3,411 SF	3,411 SF
305	1,792 SF	1,792 SF
*315	8,714 SF	8,714 SF

*Built out Medical Space

LEASE RATE: Negotiable

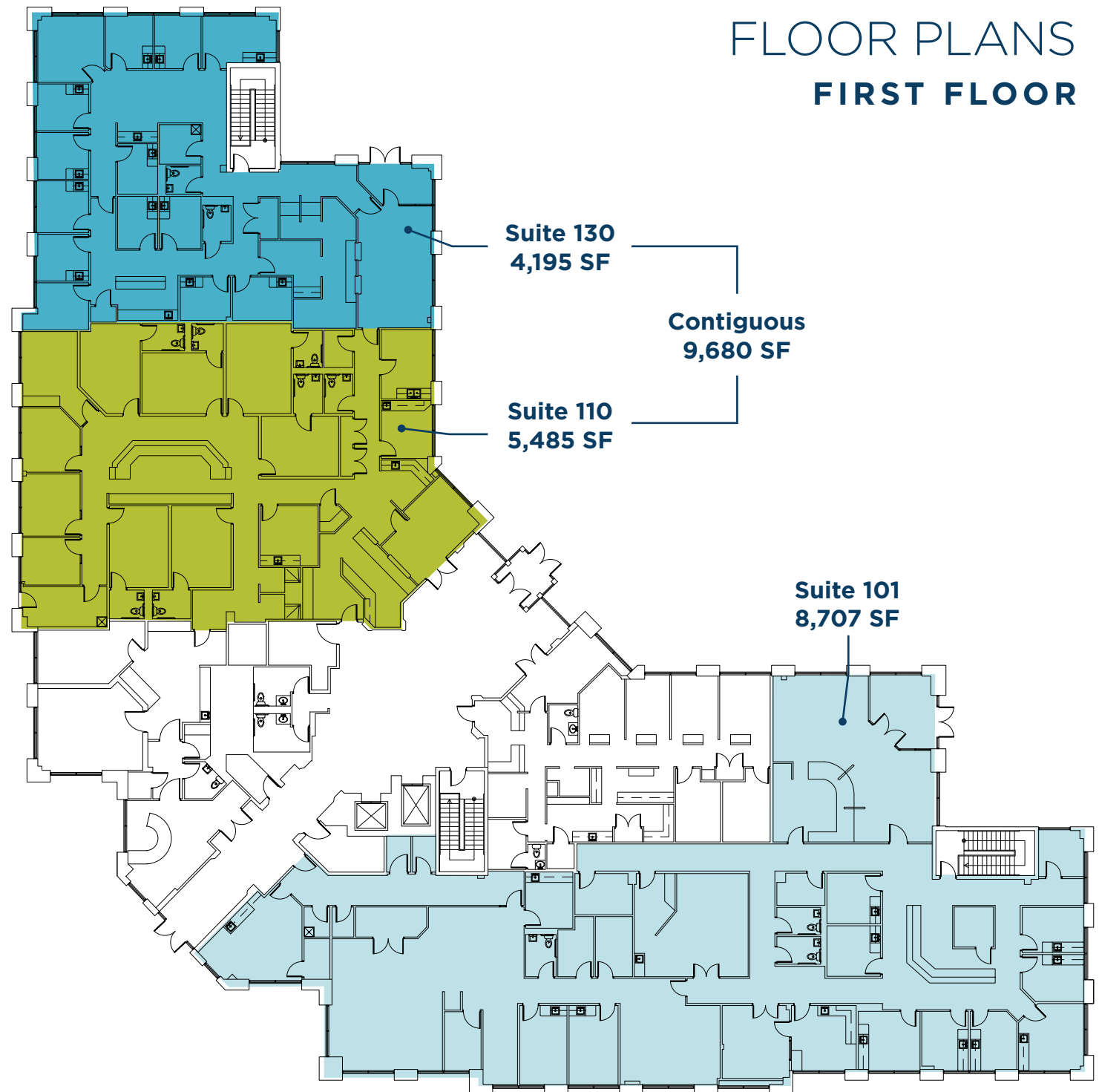


TWO STORY LOBBY



FLOOR PLANS

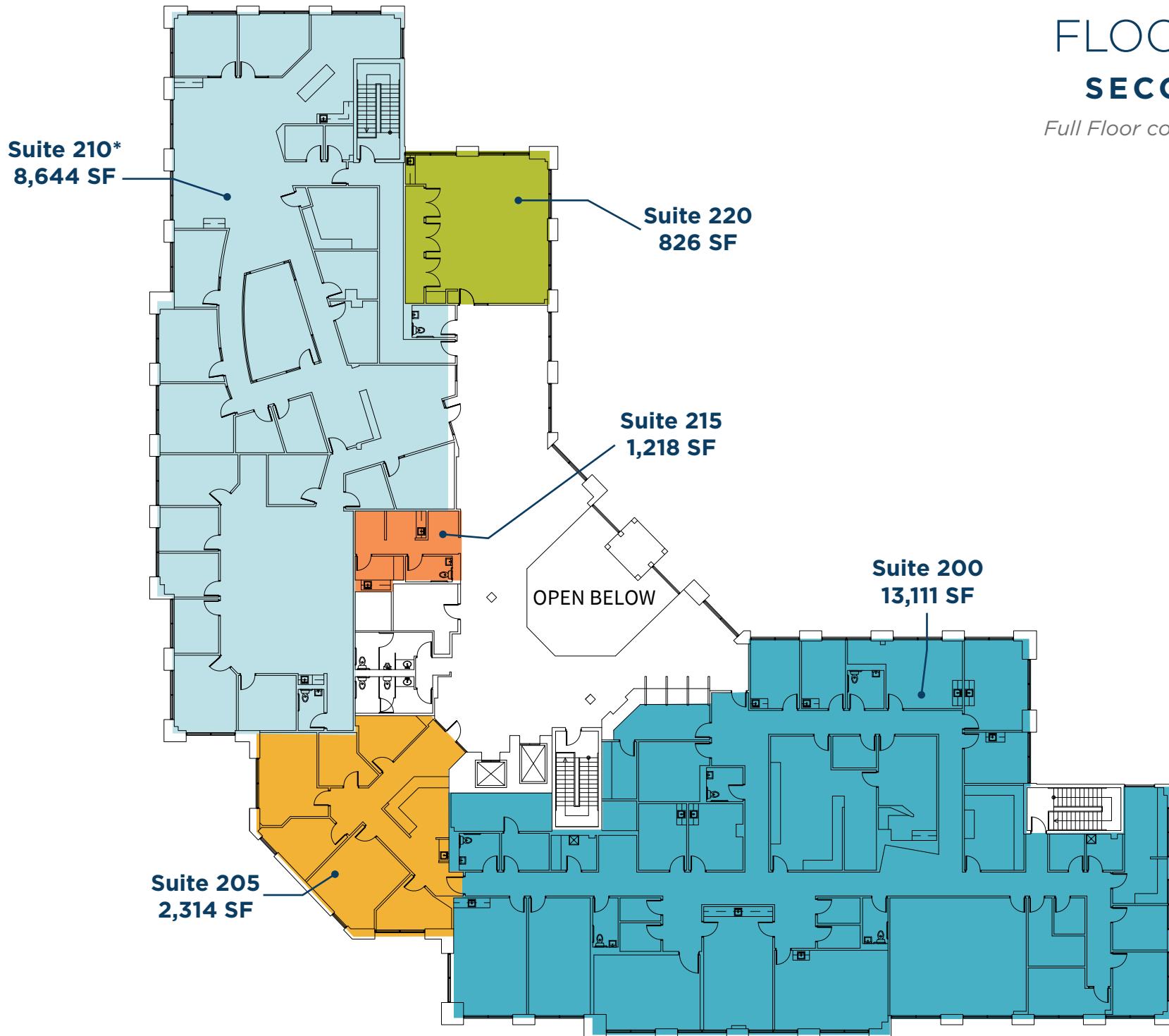
FIRST FLOOR



FLOOR PLANS

SECOND FLOOR

Full Floor contiguous to 26,113 SF



**Modernized general office space*



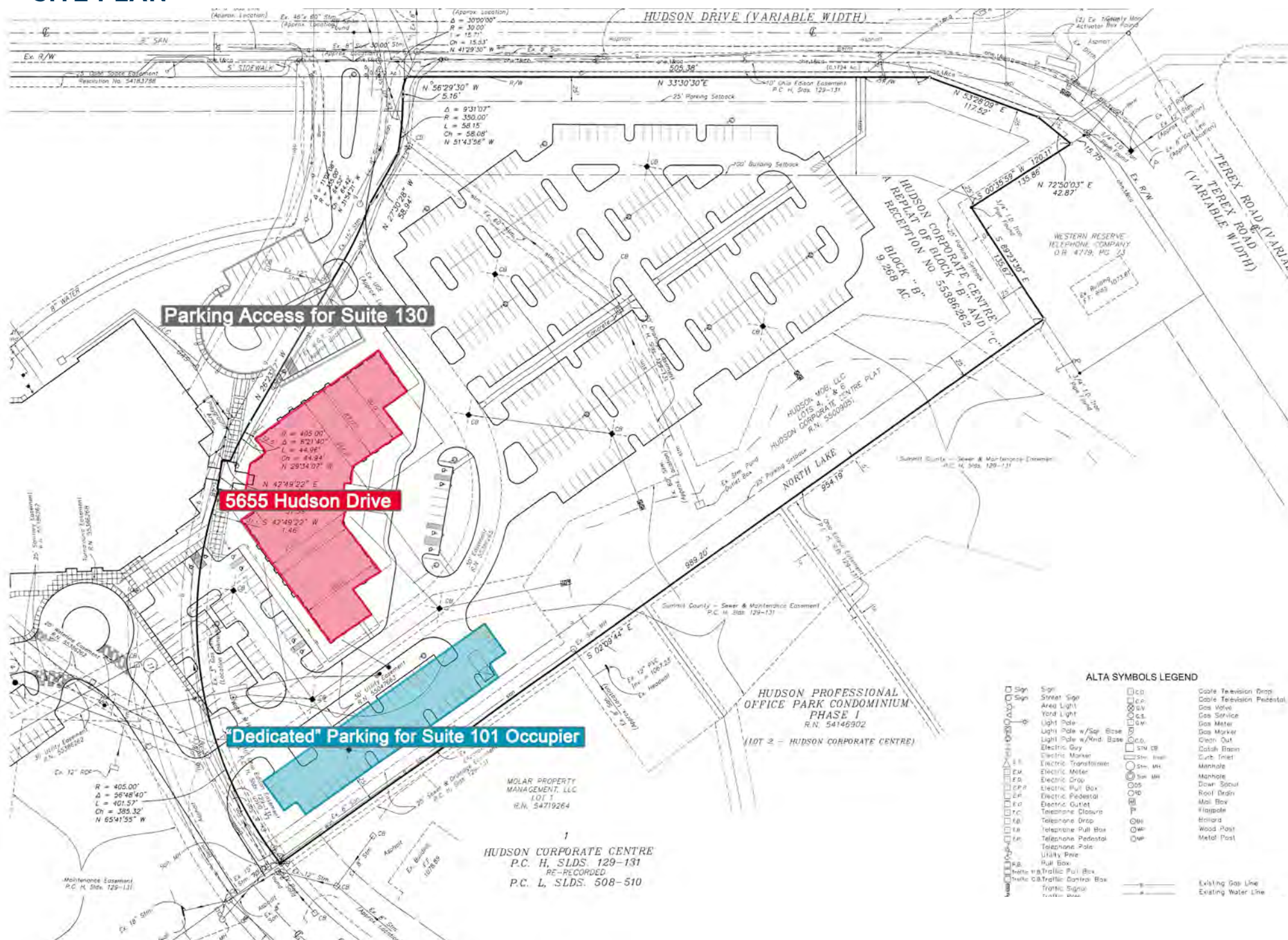
FLOOR PLANS

THIRD FLOOR

Suite 310: Modernized, newly available dental suite with upgraded finishes



SITE PLAN



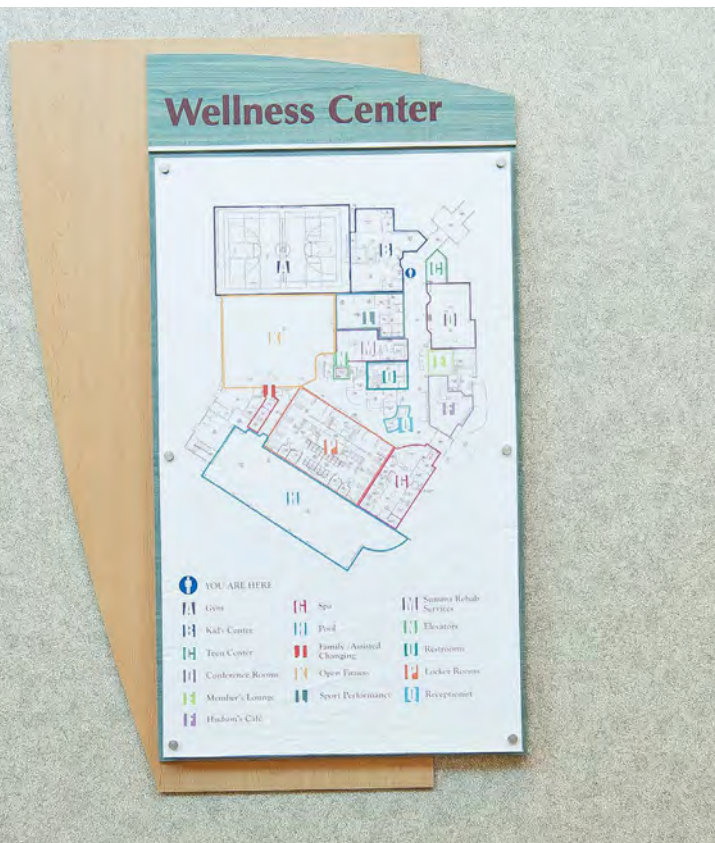


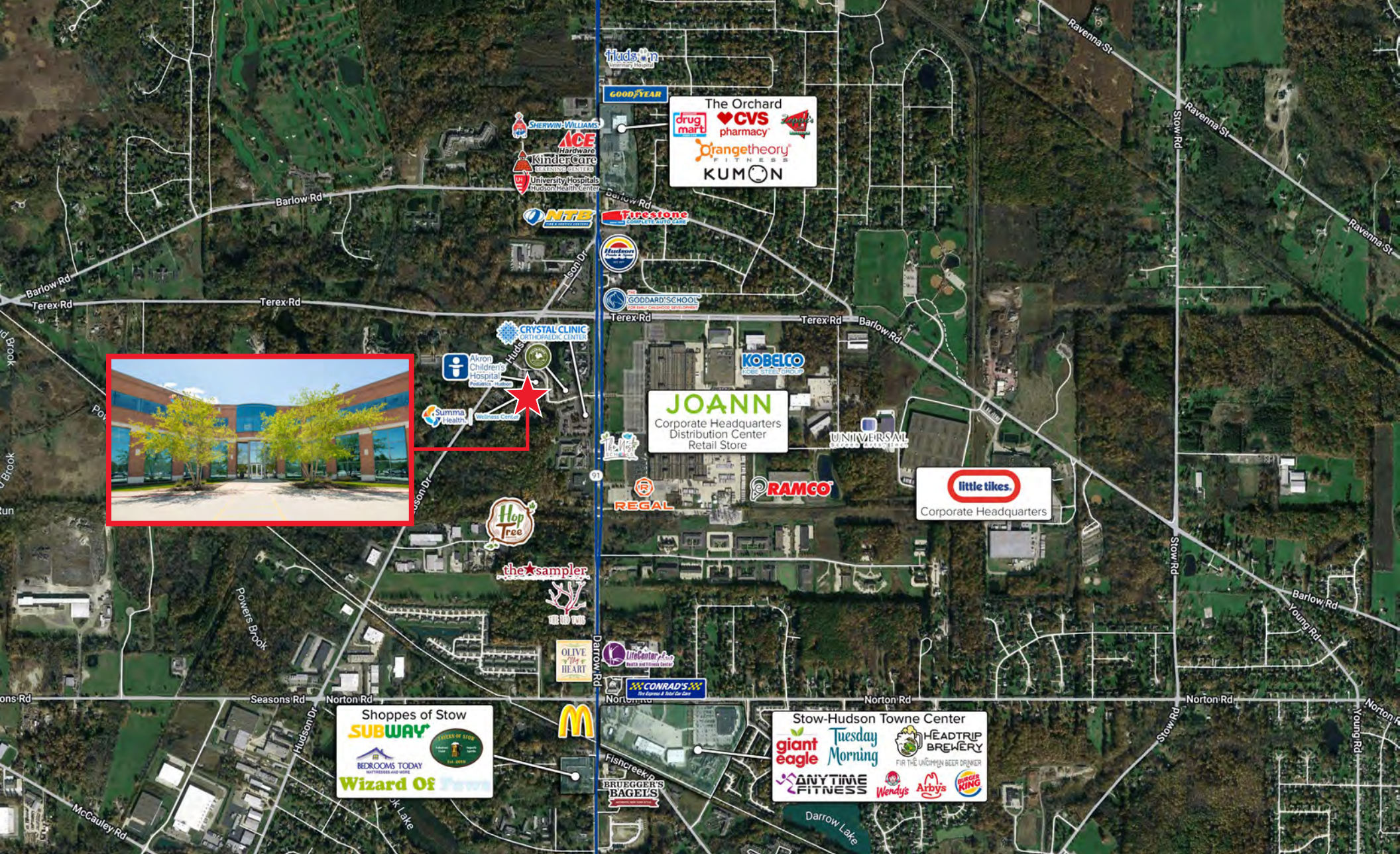
SIDE ENTRANCE



MONUMENT SIGNAGE







MAUREEN ANTER-RESSLER
 Vice President
 +1 216 525 1494
 mressler@crescorealestate.com

ERIC SCHREIBMAN
 Vice President
 +1 216 525 1471
 eschreibman@crescorealestate.com

Cushman & Wakefield | CRESCO
 6100 Rockside Woods Blvd, Suite 200
 Cleveland, OH 44131
 crescorealestate.com

