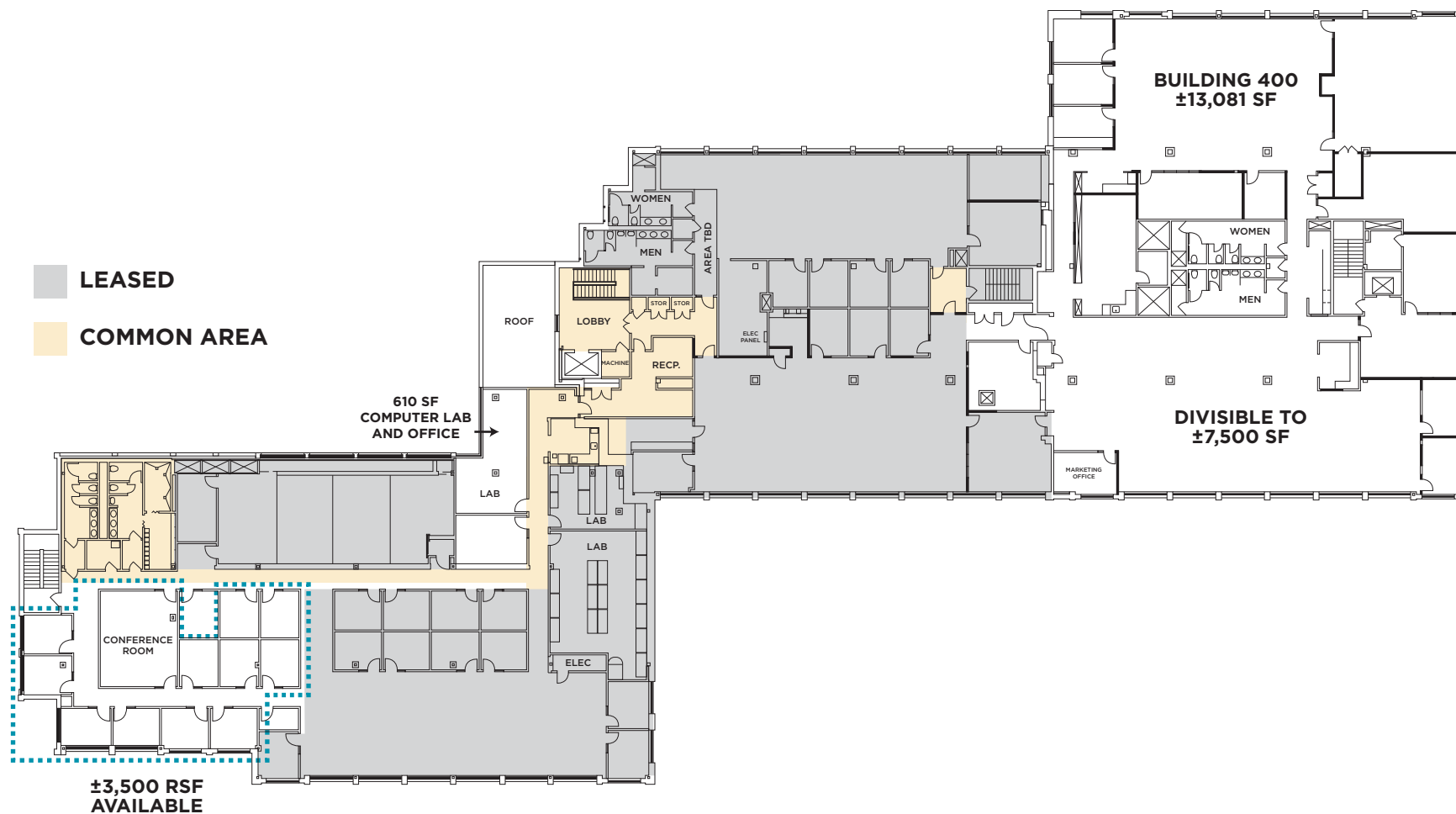


OFFICE/R&D FOR LEASE

11 CONTINENTAL BOULEVARD

MERRIMACK, NEW HAMPSHIRE

FLOORPLAN



FOR MORE INFORMATION, CONTACT:

Thomas Farrelly, SIOR
Executive Managing Director
(603) 661 4854
thomas.farrelly@cushwake.com

Denis C.J. Dancoes II
Executive Director
(603) 661 3854
denis.dancoes@cushwake.com

Tom Farrelly
Associate
(603) 828 3072
tom.farrelly@cushwake.com

**Cushman & Wakefield of
New Hampshire, Inc.**
900 Elm Street, Suite 1301
Manchester, NH 03101
(603) 628 2800
cushmanwakefield.com



The information contained in this communication is strictly confidential. NO WARRANTY OR REPRESENTATION, EXPRESS OR IMPLIED, IS MADE AS TO THE CONDITION OF THE PROPERTY (OR PROPERTIES) REFERENCED HEREIN OR AS TO THE ACCURACY OR COMPLETENESS OF THE INFORMATION CONTAINED HEREIN, AND SAME IS SUBMITTED SUBJECT TO ERRORS, OMISSIONS, CHANGE OF PRICE, RENTAL OR OTHER CONDITIONS, WITHDRAWAL WITHOUT NOTICE, AND TO ANY SPECIAL LISTING CONDITIONS IMPOSED BY THE PROPERTY OWNER(S). ANY PROJECTIONS, OPINIONS OR ESTIMATES ARE SUBJECT TO UNCERTAINTY AND DO NOT SIGNIFY CURRENT OR FUTURE PROPERTY PERFORMANCE.