



**CUSHMAN &
WAKEFIELD**

Southwestern Ontario

FOR SUBLEASE

1326 HURON STREET UNIT 102

London, ON



RETAIL SPACE

ASKING RENT

\$24.00
PSF NET

ADDITIONAL RENT

\$10.56
PSF (Est.)

AVAILABLE SPACE

1,118
SF

JAMESON LAKE

Sales Representative

519 438 8548

jameson.lake@cushwakeswo.com

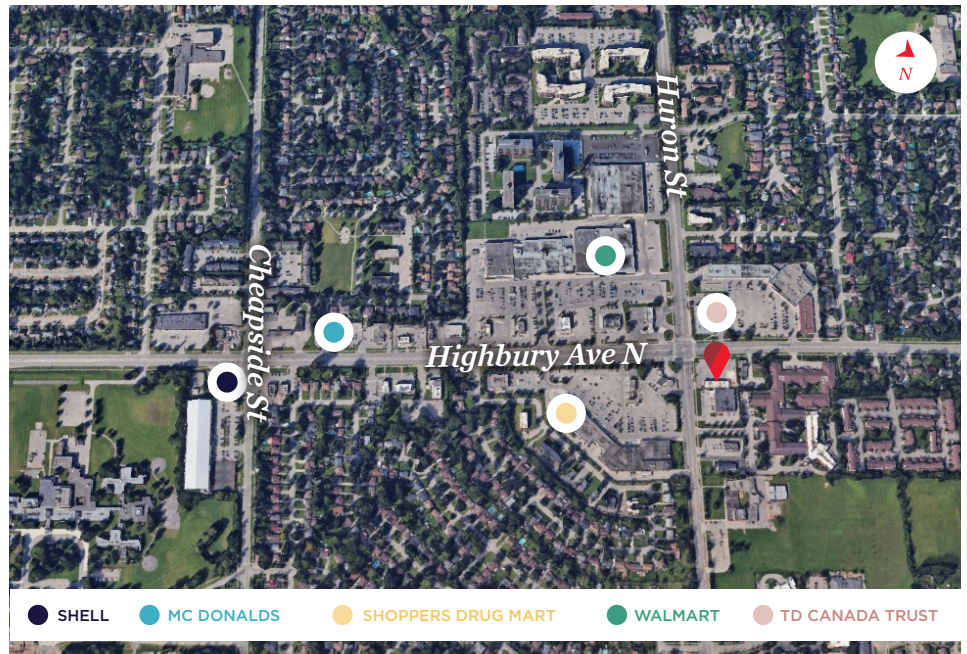
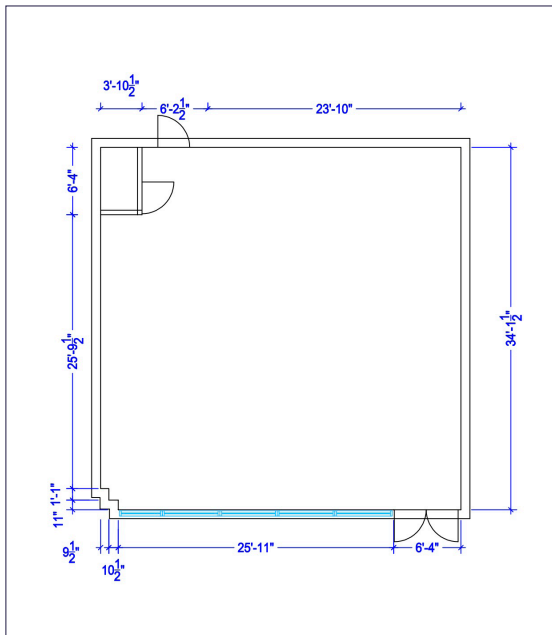
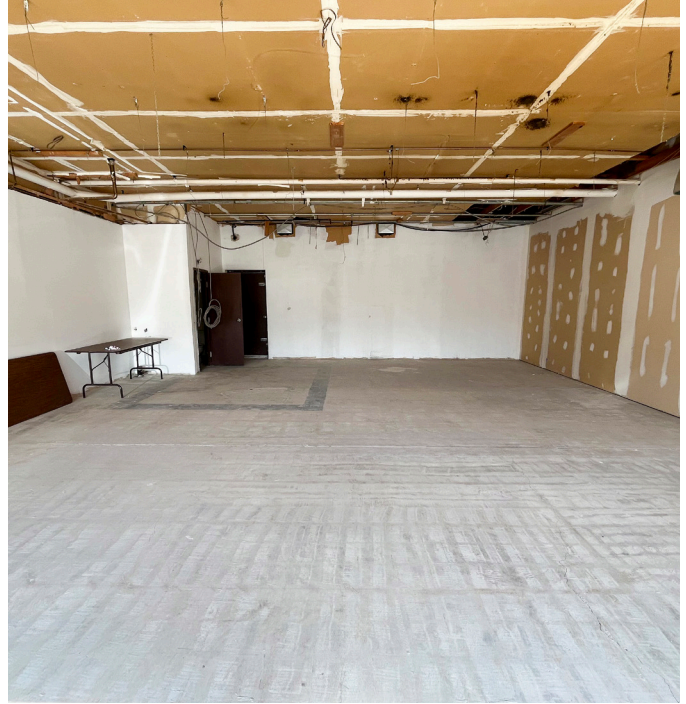
CUSHMAN & WAKEFIELD
SOUTHWESTERN ONTARIO
850 Medway Park Dr, Suite 201
London, Ontario N6G 5G6
www.cushwakeswo.com

©2025 Cushman & Wakefield Southwestern Ontario, Real Estate Brokerage, Independently Owned and Operated. A Member of the Cushman & Wakefield Alliance. This information has been obtained from sources believed to be reliable but has not been verified. No warranty or representation, express or implied, is made as to the condition of the property (or properties) referenced herein or as to the accuracy or completeness of the information contained herein, and same is submitted subject to errors, omissions, change of price, rental or other conditions, withdrawal without notice, and to any special listing conditions imposed by the property owner(s). Any projections, opinions or estimates are subject to uncertainty and do not signify current or future property performance. All rights reserved.

ABOUT THE PROPERTY

This bright, open space offers a blank canvas, perfect for a variety of retail, medical, or office purposes.

- **Zoning:** ASA1/ASA3
- **Asking rent:** \$3,219.84 per month + HST and utilities
- Head lease expires on August 31st, 2027
- One, 5-year option (August 31st, 2032) with six months (February 28th, 2027) prior written notice



JAMESON LAKE

Sales Representative

519 438 8548

jameson.lake@cushwakeswo.com

CUSHMAN & WAKEFIELD
SOUTHWESTERN ONTARIO
850 Medway Park Dr, Suite 201
London, Ontario N6G 5G6
www.cushwakeswo.com

CUSHMAN & WAKEFIELD
Southwestern Ontario

©2025 Cushman & Wakefield Southwestern Ontario, Real Estate Brokerage, Independently Owned and Operated. A Member of the Cushman & Wakefield Alliance. This information has been obtained from sources believed to be reliable but has not been verified. No warranty or representation, express or implied, is made as to the condition of the property (or properties) referenced herein or as to the accuracy or completeness of the information contained herein, and same is submitted subject to errors, omissions, change of price, rental or other conditions, withdrawal without notice, and to any special listing conditions imposed by the property owner(s). Any projections, opinions or estimates are subject to uncertainty and do not signify current or future property performance. All rights reserved.