



CUSHMAN &
WAKEFIELD



2 BUILDINGS FOR LEASE

1876

FORTUNE ROAD / SALT LAKE CITY, UT

32,015 SF / 5.36 ACRES / RAIL SERVED

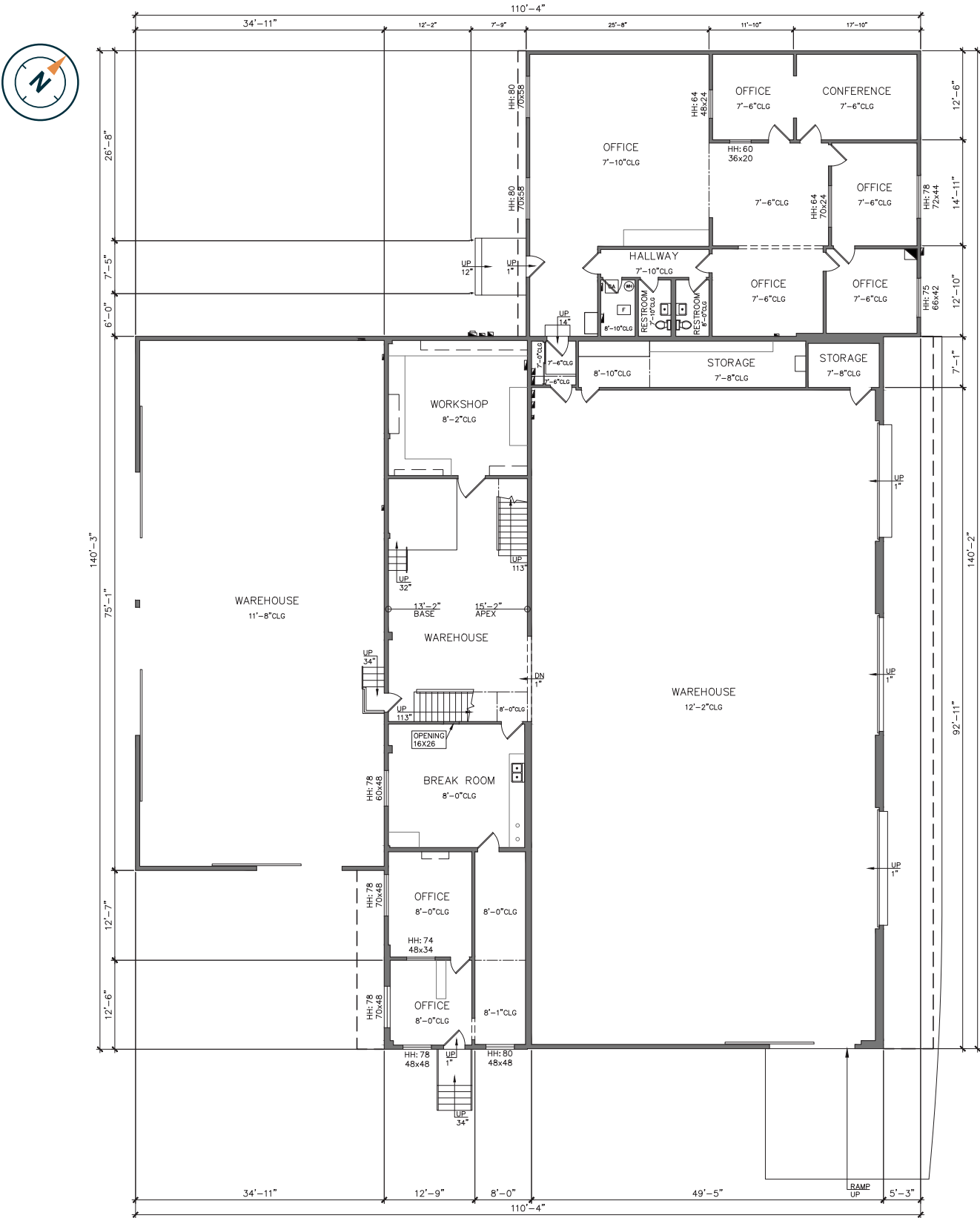
CALL FOR PRICING

BUILDING 1

1876 FORTUNE ROAD / SALT LAKE CITY, UT



TOTAL SIZE 11,867 SF	CLEAR HEIGHT 16'	GARAGE
OFFICE 2,200 SF	3 RAIL DOCK DOORS OVERHEAD 10'X16'	TOTAL SIZE 2,660 SF
WAREHOUSE 7,100 SF	1 GROUND LEVEL DOOR 11'X13'	CLEAR HEIGHT 12'
MEZZANINE ±2,073 SF (NOT INCLUDED IN TOTAL SF)	POWER SINGLE PHASE 240 VOLTS, 200 AMPS	1 GROUND LEVEL DOOR 10'X12'



BUILDING 2

1876 FORTUNE ROAD / SALT LAKE CITY, UT



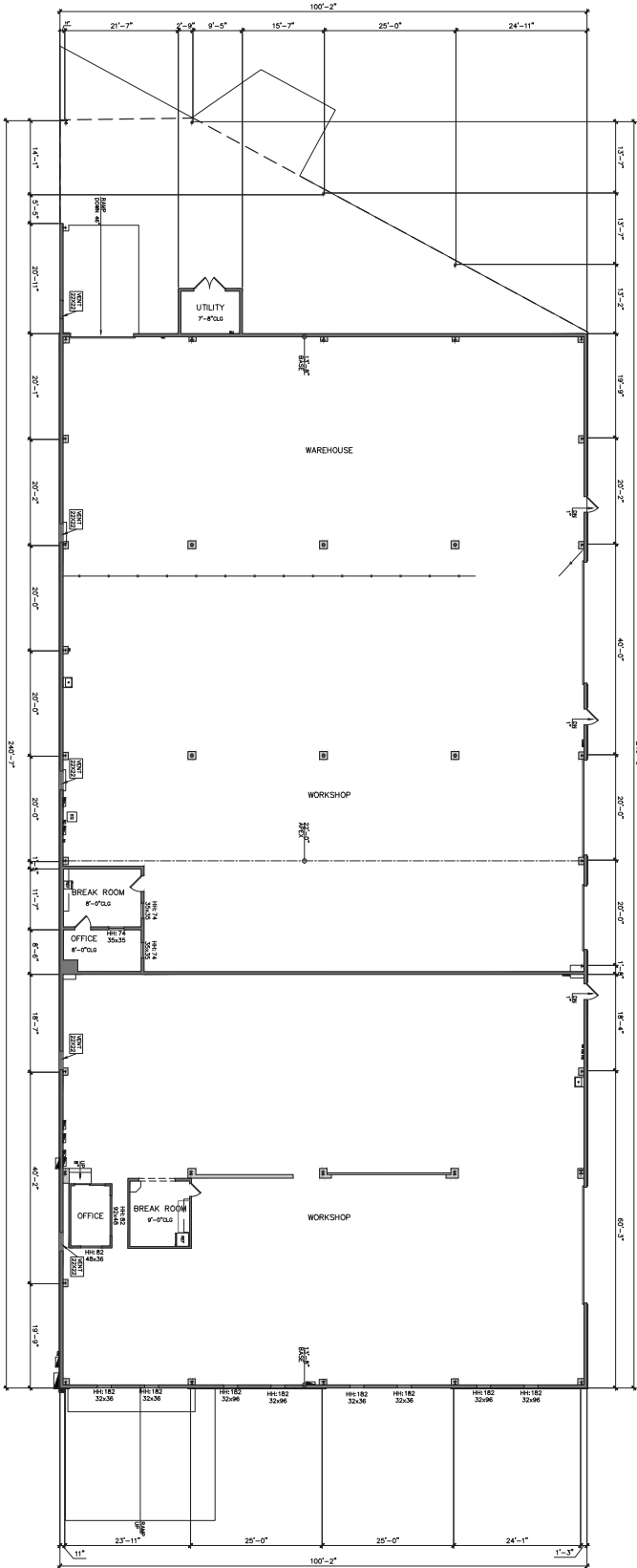
- WAREHOUSE**
20,148 SF

DOORS
1 GL OVERHEAD - 12'X22'
1 GL OVERHEAD - 12'X12'
1 GL OVERHEAD - 15'X18'
1 GL OVERHEAD - 14'X23'
- BAYS**
5 - 38'-39'X100'

POWER
THREE PHASE
480 VOLT, 200 AMPS

COVERED RAIL DOCK
2,750 SF

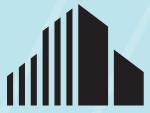
CLEAR HEIGHT
16'-18'



1876

FORTUNE ROAD / SALT LAKE CITY, UT





**CUSHMAN &
WAKEFIELD**

2 BUILDINGS FOR LEASE

1876

*FORTUNE ROAD / SALT LAKE CITY, UT
32,015 SF / 5.36 ACRES / RAIL SERVED
CALL FOR PRICING*

CONTACT INFORMATION

PHILLIP EILERS

Senior Director

+1 801 303 5426

phillip.eilers@cushwake.com

JON SCHRECK

Director

+1 801 303 5531

jon.schreck@cushwake.com

170 South Main Street, Suite 1600

Salt Lake City, UT 84101

+1 801 322 2000

cushmanwakefield.com