

CUSHMAN &
WAKEFIELD

LUND
COMPANY

EAST PARK PLAZA

110-300 N. 66TH STREET
LINCOLN, NE 68505



RETAIL SPACE FOR LEASE
1,577 - 81,519 SF

PROPERTY DETAILS

This neighborhood shopping center presents a premier Junior box, in line and end cap spaces available for lease. Join co-tenants: Marcus Theaters, Edible Arrangements, Famous Footwear, Firehouse Subs, HairMasters, Brown's Shoe Fit, David's Nail Salon and Dollar Tree. Located on 66th and O Street, directly east of the Gateway Mall. Signage available on O Street!



PROPERTY HIGHLIGHTS

Lease Rate: \$12.00 - \$18.50 PSF NNN

NNN Expenses: \$4.21 PSF

Total Available: 81,519 SF

Max Contiguous: 25,000 SF

Building Size: 214,029 SF

Year Built/Renovated: 1981/2016

Total Site Area: 19 AC

Parking Ratio: 5.43/1000

Zoning: B-5

A/C | Heat Yes - Forced Air

Traffic Count: 46,750 EADT

AVAILABILITY

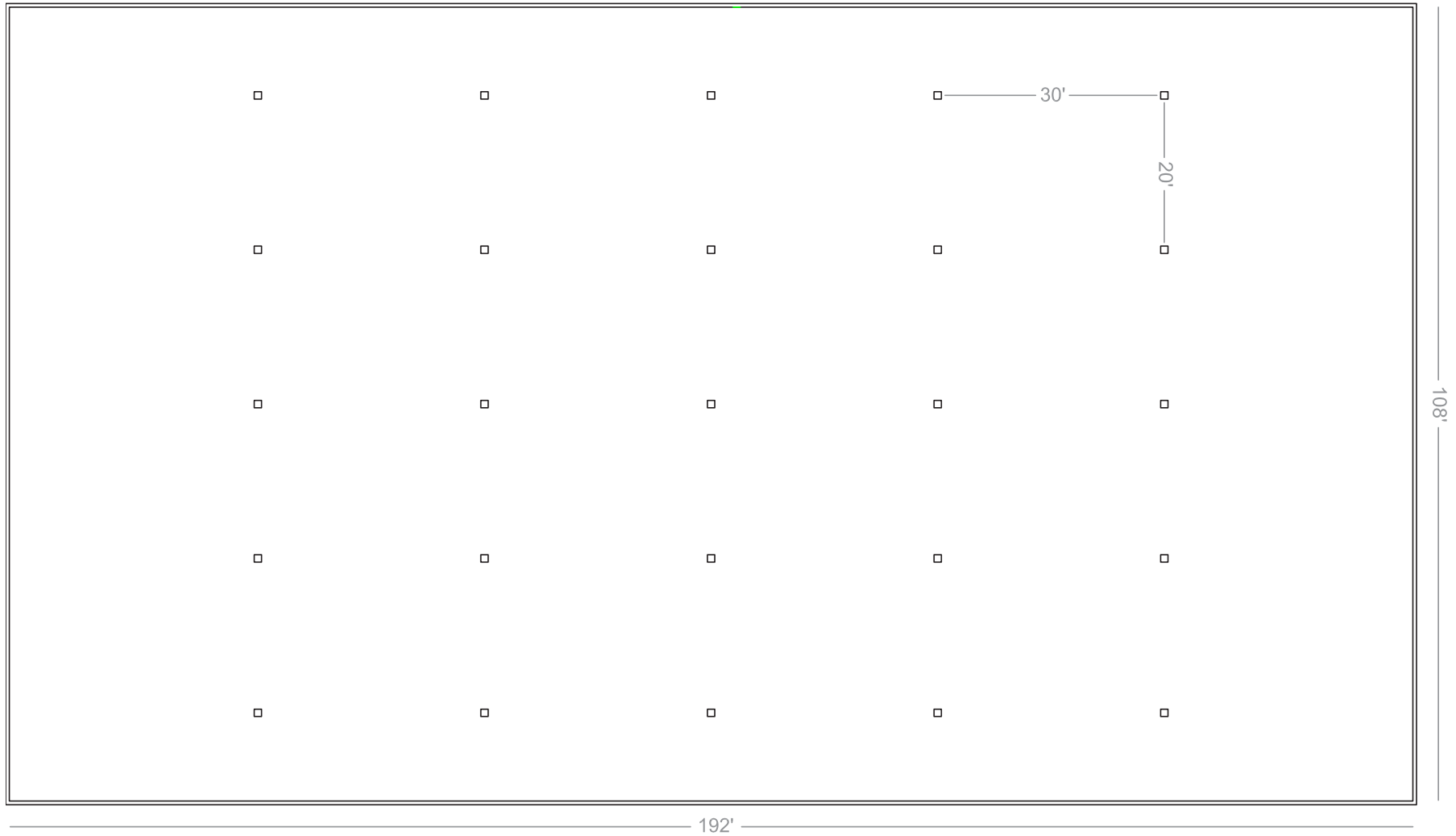
	SF	Available
Suite 3	25,000 SF	Immediately
Suite 5	31,650 SF	60-Day Notice
Suite 6B	12,262 SF	Immediately
Suite 8	5,700 SF	Immediately
Suite 19	4,393 SF	Immediately
Suite 25	2,514 SF	Immediately

*Contact Agent for Pricing



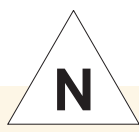
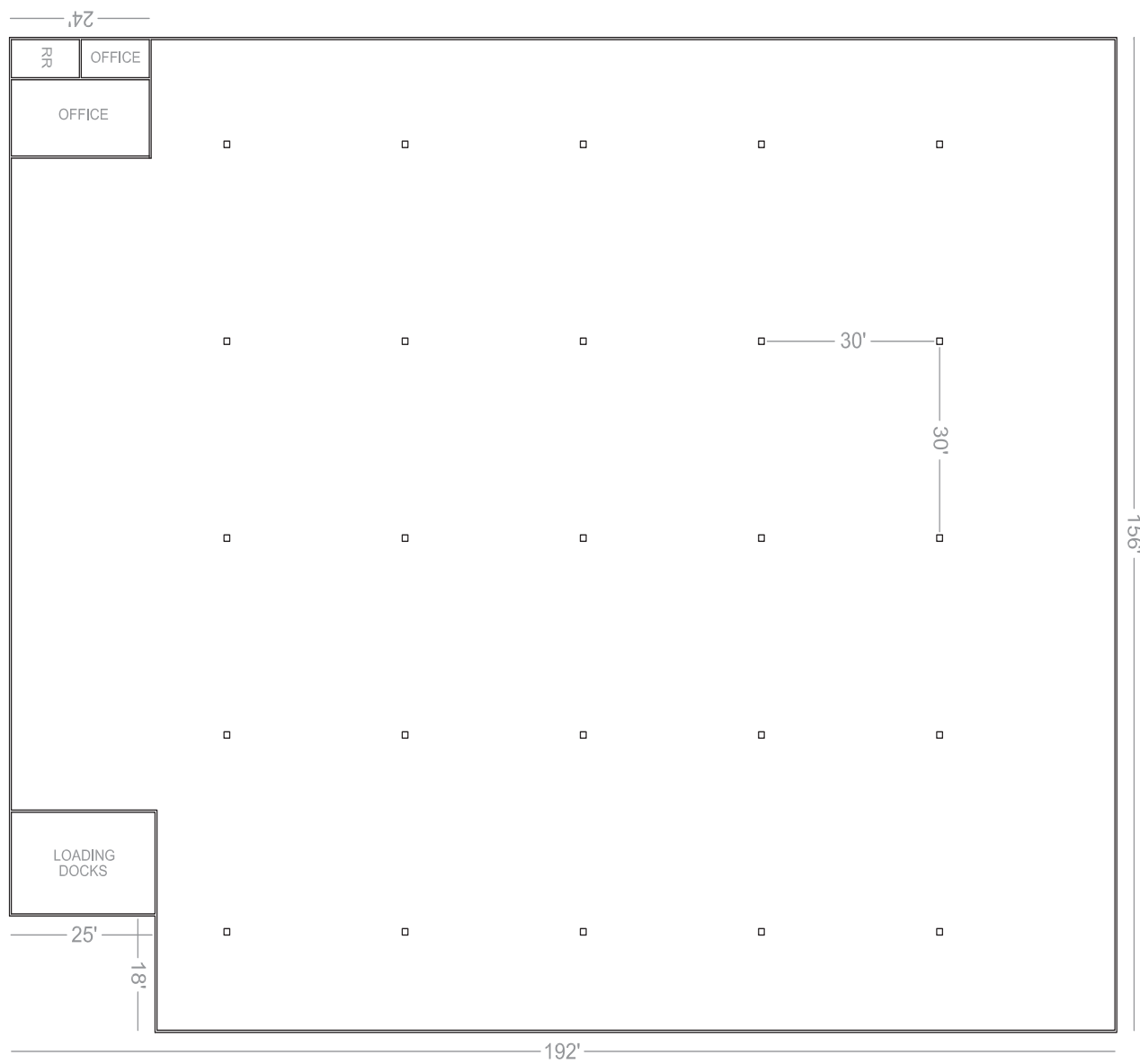
SUITE 3

25,000 SF



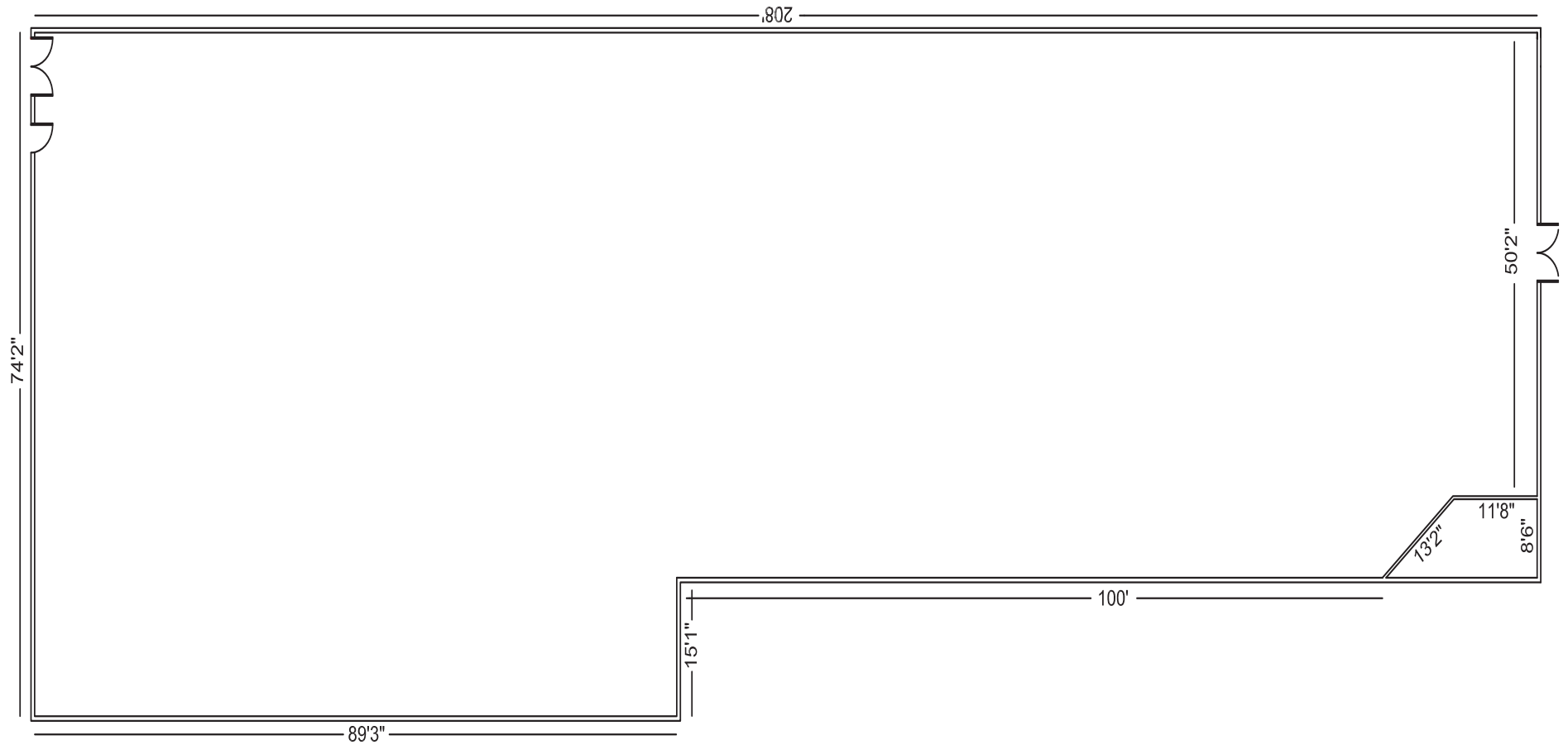
SUITE 5

31,650 SF



SUITE 6B

12,262 SF

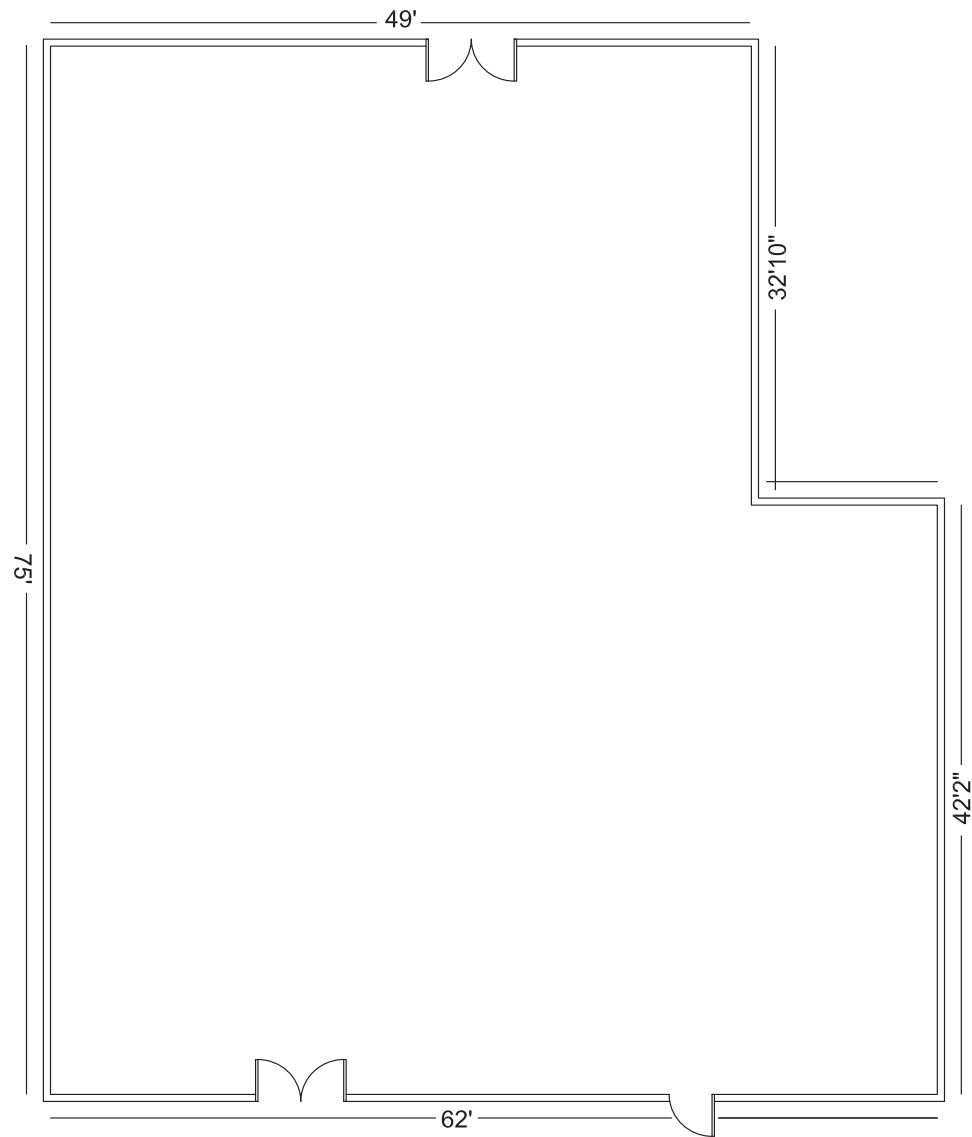


5,700 SF



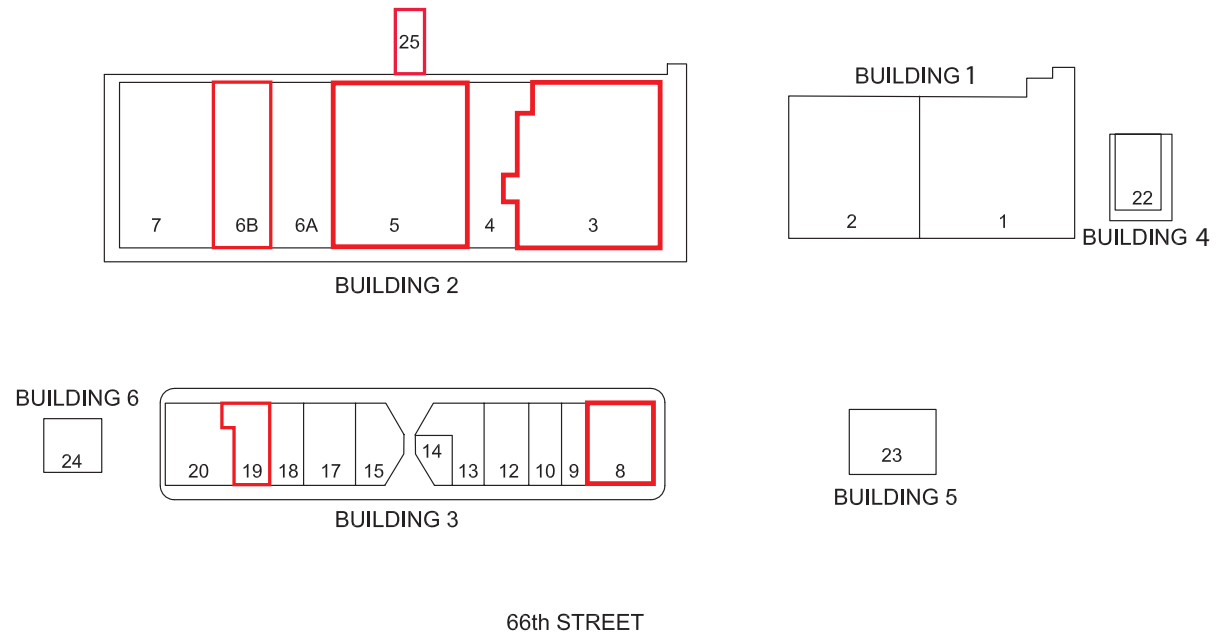
SUITE 19

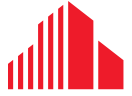
4,393 SF



SITE PLAN

SUITE	TENANT	SUITE SF
1&2	RUSS'S MARKET	46,130
3	AVAILABLE	25,000
4	FAMOUS FOOTWEAR	12,330
5	AVAILABLE	31,650
6A	DOLLAR TREE	12,667
6B	AVAILABLE	12,626
7	MARCUS THEATRES	22,155
8	AVAILABLE	5,700
9	FIREHOUSE SUBS	1,875
10	DAVID'S NAIL SALON	1,875
12	EDIBLE ARRANGEMENTS	1,900
13	BROWN'S SHOE FIT	4,503
14-15	LP FITNESS	4,807
17	CHI HEALTH	3,993
18	PET DOCTOR	2,508
19	AVAILABLE	4,393
20	ATHLETICO	3,208
22	MED EXPRESS	6,663
23	CHINA BUFFET	5,800
24	FIRESTONE	4,430
25	AVAILABLE	2,514





CUSHMAN &
WAKEFIELD

LUND
COMPANY

EAST PARK PLAZA



CONTACT

HOLLY JONES
Director of Retail Services
+1 402 548 4038
holly.jones@lundco.com

DYLAN MCCABE
Associate
+1 402 548 4075
dylan.mccabe@lundco.com

Independently Owned and Operated / A Member of the Cushman & Wakefield Alliance

©2025 Cushman & Wakefield. All rights reserved. The information contained in this communication is strictly confidential. This information has been obtained from sources believed to be reliable but has not been verified. NO WARRANTY OR REPRESENTATION, EXPRESS OR IMPLIED, IS MADE AS TO THE CONDITION OF THE PROPERTY (OR PROPERTIES) REFERENCED HEREIN OR AS TO THE ACCURACY OR COMPLETENESS OF THE INFORMATION CONTAINED HEREIN, AND SAME IS SUBMITTED SUBJECT TO ERRORS, OMISSIONS, CHANGE OF PRICE, RENTAL OR OTHER CONDITIONS, WITHDRAWAL WITHOUT NOTICE, AND TO ANY SPECIAL LISTING CONDITIONS IMPOSED BY THE PROPERTY OWNER(S). ANY PROJECTIONS, OPINIONS OR ESTIMATES ARE SUBJECT TO UNCERTAINTY AND DO NOT SIGNIFY CURRENT OR FUTURE PROPERTY PERFORMANCE.