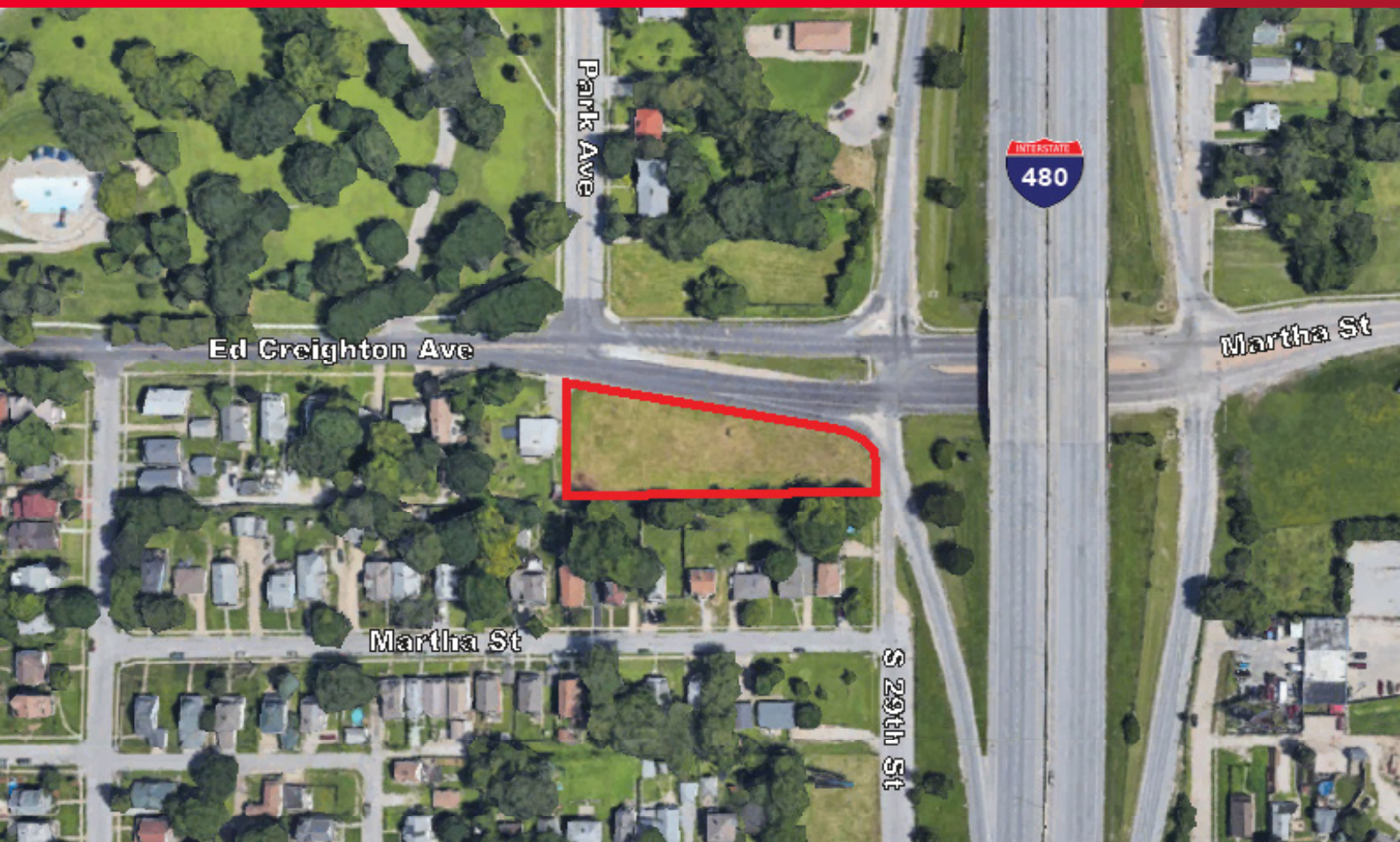




FOR SALE

2929 Ed Creighton Avenue
Omaha, Nebraska 68105



35,279 SF Land for Sale
Sale Price: \$299,000

Approximately 0.808 acres of land located just off of I-480 on the southwest corner of Ed Creighton Avenue/Martha Street and I-480. Property is currently zoned General Office.

Michael P. Earl
Partner
(402) 548 4005
michael.earl@lundco.com

Dylan McCabe, CCIM
Associate
(402) 548 4075
dylan.mccabe@lundco.com

450 Regency Parkway, Suite 200
Omaha, NE 68114
+1 402 393 8811
lundco.com

Independently Owned and Operated / A Member of the Cushman & Wakefield Alliance

Cushman & Wakefield Copyright 2022. No warranty or representation, express or implied, is made to the accuracy or completeness of the information contained herein, and same is submitted subject to errors, omissions, change of price, rental or other conditions, withdrawal without notice, and to any special listing conditions imposed by the property owner(s). As applicable, we make no representation as to the condition of the property (or properties) in question.

FOR SALE

2929 Ed Creighton Avenue
Omaha, Nebraska 68105



Availability

Sale Price	\$299,000
Price PSF	\$8.48

Property Highlights

Total Site Area	0.808 AC (35,279 SF)
Zoning	General Office
Lot Dimensions	Irregular
Flood Plain	No
Improvements	None - Vacant Land
Utilities	In Street

Independently Owned and Operated / A Member of the Cushman & Wakefield Alliance

Cushman & Wakefield Copyright 2022. No warranty or representation, express or implied, is made to the accuracy or completeness of the information contained herein, and same is submitted subject to errors, omissions, change of price, rental or other conditions, withdrawal without notice, and to any special listing conditions imposed by the property owner(s). As applicable, we make no representation as to the condition of the property (or properties) in question.

Potential Use Plan

