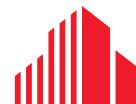




RETAIL SPACE FOR LEASE

GALLERIA COLLECTION

14451-14543 W. CENTER ROAD | 68144



CUSHMAN &
WAKEFIELD

LUND
COMPANY

GALLERIA COLLECTION

14451-14543 W. CENTER ROAD | 68144

Property Description

This center has excellent visibility, sitting on the southwest corner of 144th & W. Center Road with over 49,000 cars pass by per day. Current tenants include Genji Steakhouse, Ageless Men's Health, Otoro Sushi & Ramen, The Observatory Bar and Grill, Dogtopia, Vitality Health Center and Country Sampler Quilt Shop. The property recently had new exterior building renovations and parking lot updates.

Lease Rate: \$14.00 SF NNN

Total Available: 9,240 SF

Maximum Contiguouse: 4,507 SF

Building Size: 53,194 SF

Year Built: 1986

Total Site Area: 5.8 AC

Zoning: CC

Clearance Height: 9' min.

Traffic Count: 49,644 EADT

Operating Expenses: \$5.36 Total

2025 Budget

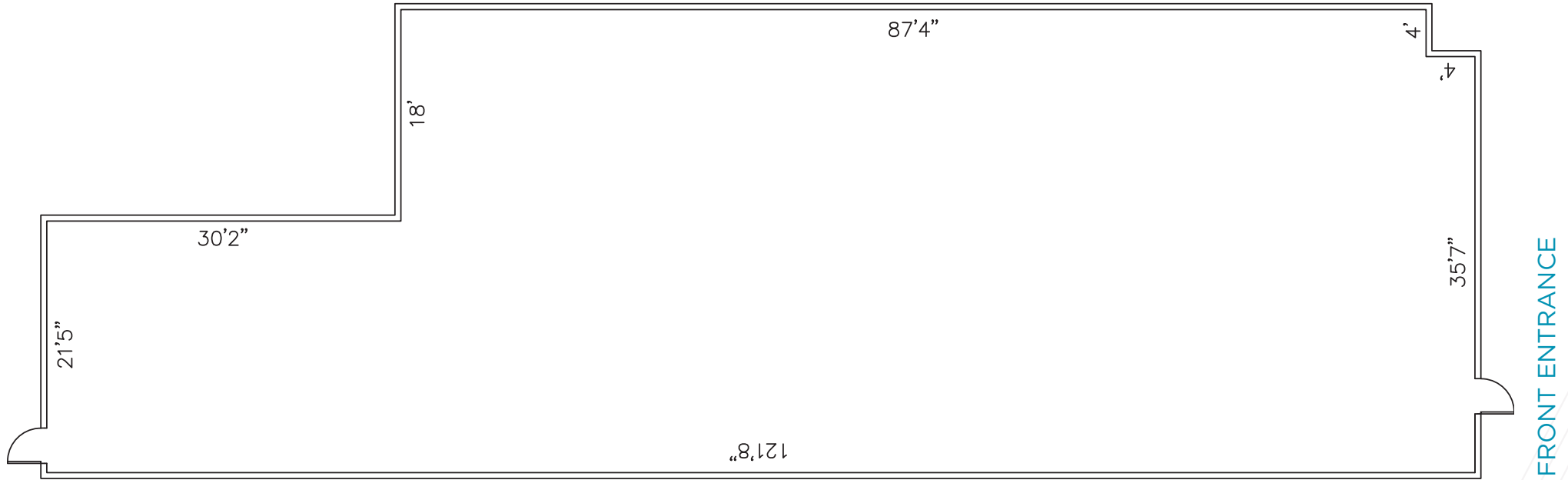
SUITE	SQUARE FEET	PRICE/SF NNN	AVAILABLE
9-10	4,135	\$14.00	IMMEDIATELY
21	4,507	\$14.00	IMMEDIATELY
26	598	\$14.00	JUNE 1, 2025



GALLERIA COLLECTIONS

14451-14543 W. CENTER ROAD | 68144

SUITE 14517 (21) - 4,507 SF

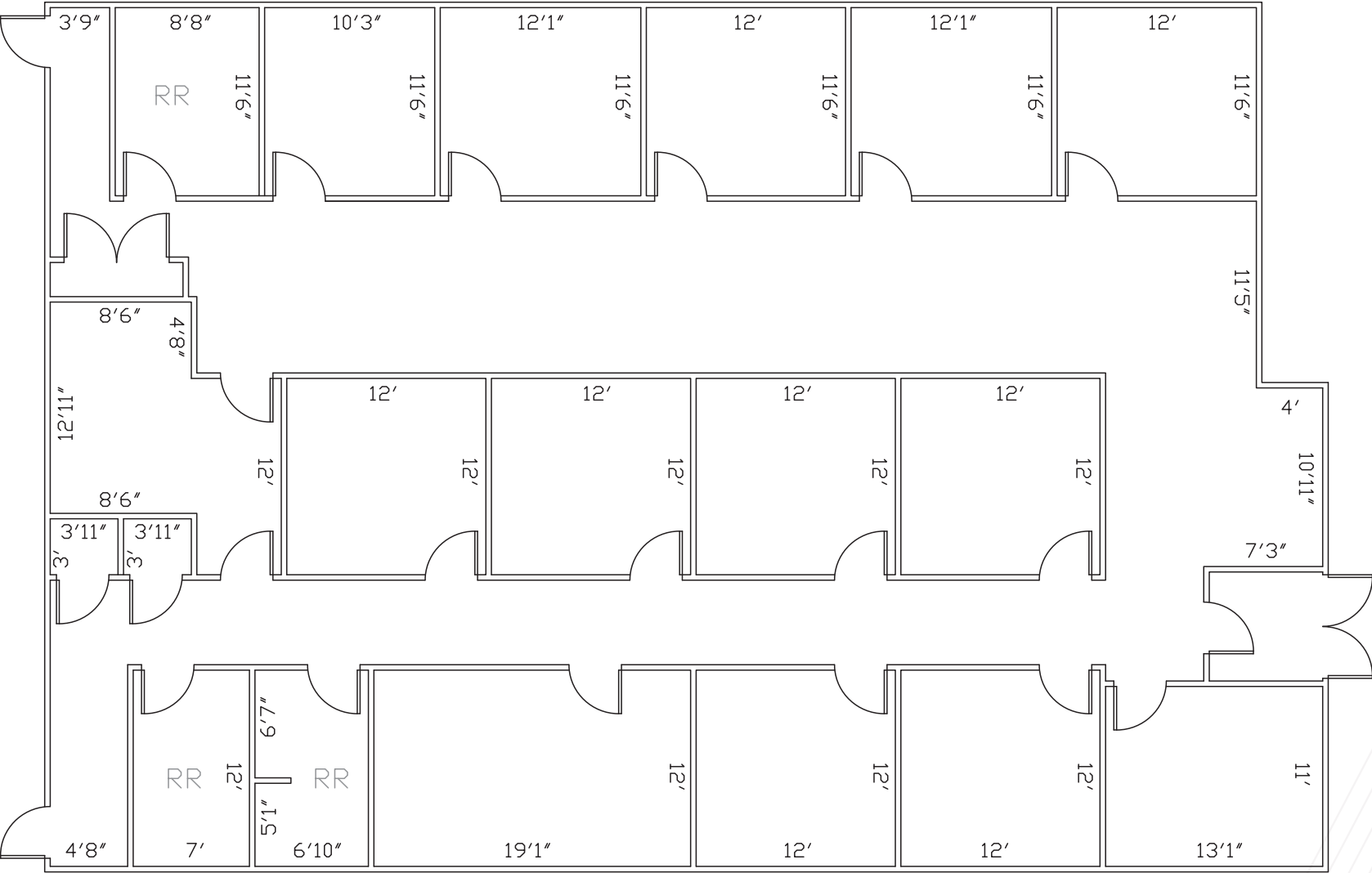


** Floor plan measurements are approximate and are for illustration purposes only.

GALLERIA COLLECTIONS

14451-14543 W. CENTER ROAD | 68144

SUITE 14477 (9-10) - 4,135 SF

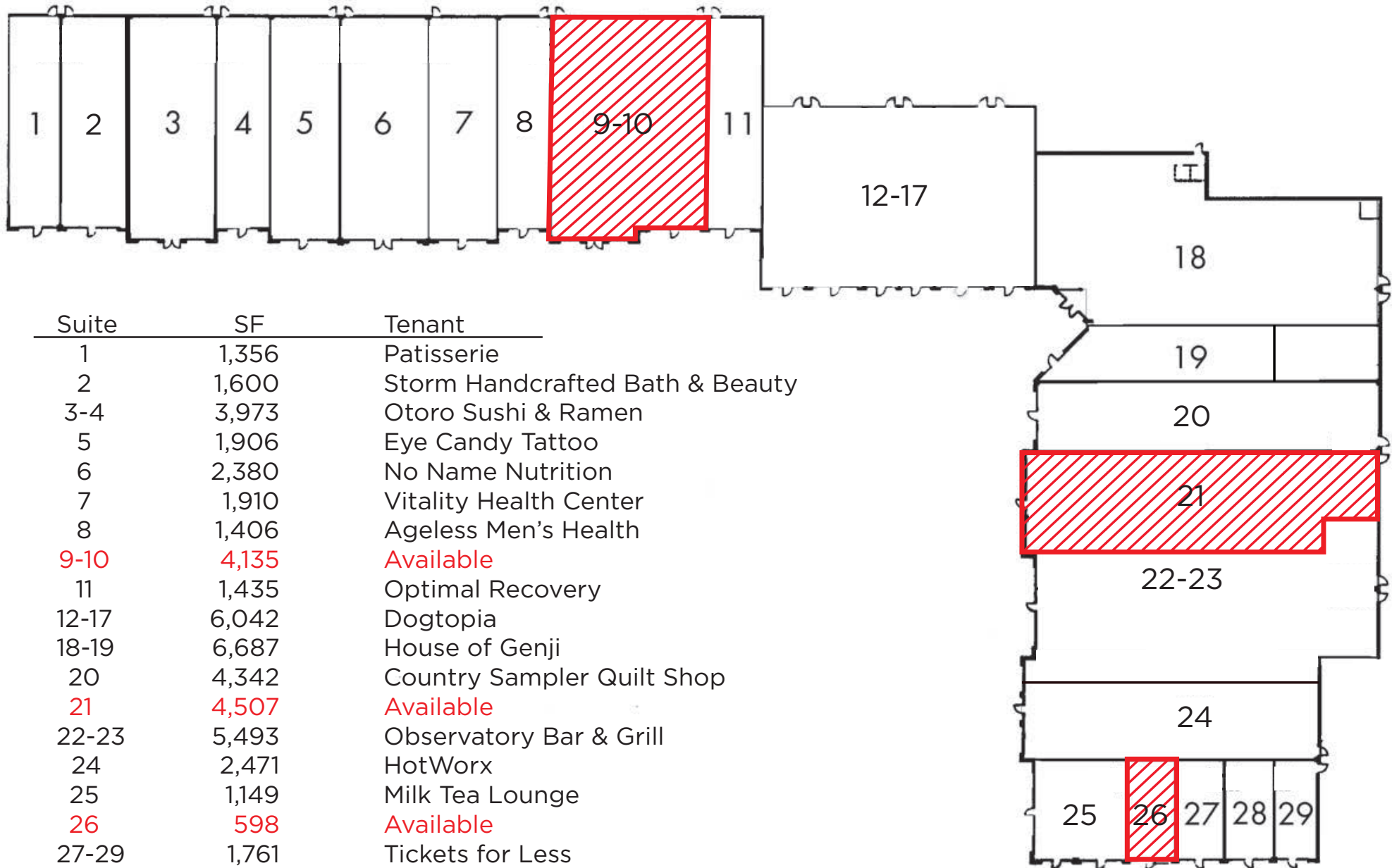


FRONT ENTRANCE

** Floor plan measurements are approximate and are for illustration purposes only.

GALLERIA COLLECTION

14451-14543 W. CENTER ROAD | 68144



GALLERIA COLLECTIONS

14451-14543 W. CENTER ROAD | 68144



W. CENTER RD

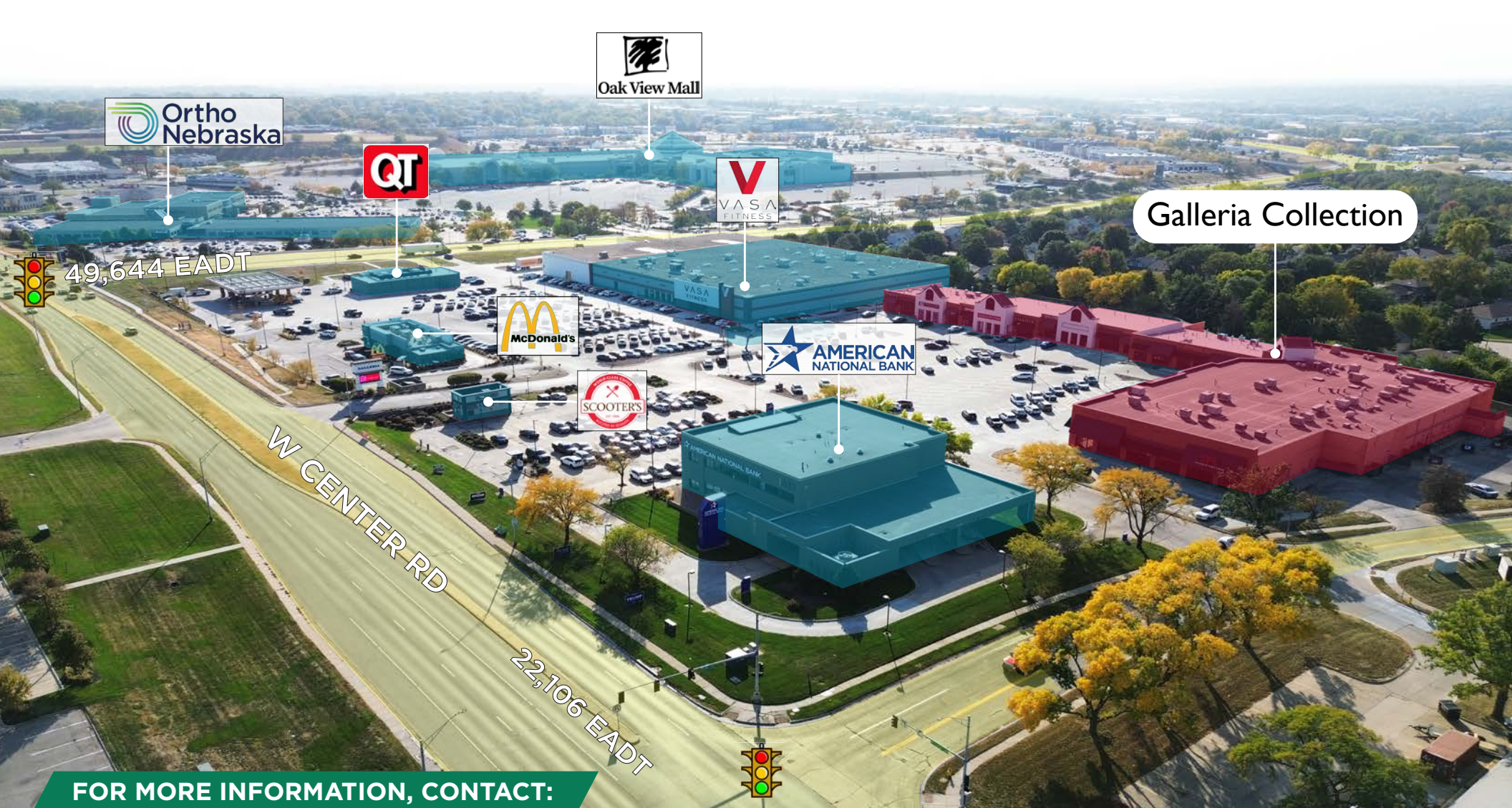
49,644 EADT

S. 144TH STREET

GALLERIA COLLECTIONS

14451-14543 W. CENTER ROAD | 68144





FOR MORE INFORMATION, CONTACT:

HOLLY JONES

Director of Retail Services
+1 402 548 4038
holly.jones@lundco.com

TREY MACKNIGHT

Associate
+1 402 548 4079
trey.macknight@lundco.com

Independently Owned and Operated / A Member of the Cushman & Wakefield Alliance

©2025 Cushman & Wakefield. All rights reserved. The information contained in this communication is strictly confidential. This information has been obtained from sources believed to be reliable but has not been verified. NO WARRANTY OR REPRESENTATION, EXPRESS OR IMPLIED, IS MADE AS TO THE CONDITION OF THE PROPERTY (OR PROPERTIES) REFERENCED HEREIN OR AS TO THE ACCURACY OR COMPLETENESS OF THE INFORMATION CONTAINED HEREIN, AND SAME IS SUBMITTED SUBJECT TO ERRORS, OMISSIONS, CHANGE OF PRICE, RENTAL OR OTHER CONDITIONS, WITHDRAWAL WITHOUT NOTICE, AND TO ANY SPECIAL LISTING CONDITIONS IMPOSED BY THE PROPERTY OWNER(S). ANY PROJECTIONS, OPINIONS OR ESTIMATES ARE SUBJECT TO UNCERTAINTY AND DO NOT SIGNIFY CURRENT OR FUTURE PROPERTY PERFORMANCE.



**CUSHMAN &
WAKEFIELD**

LUND
COMPANY