

LAKE MANAWA MULTIFAMILY SITE



CUSHMAN &
WAKEFIELD

LUND
COMPANY

E. MANAWA DRIVE & HURON CIRCLE / COUNCIL BLUFFS, IA



23 ACRES OF DEVELOPMENT LAND FOR SALE

Large flat lot, ready for development next to Lake Manawa in Council Bluffs, IA. Great development site with Lake Manawa (State Park), Council Bluffs Country Club, Metro Crossing retail, and Manawa Centre retail, all in the immediate area. Site is located at the intersection of I-80/I-29 and Hwy 275/Hwy 92, with easy access to everything in the metro. All utilities nearby. Surrounded by single-family housing, site is best suited for multi-family development.

Independently Owned and Operated / A Member of the Cushman & Wakefield Alliance

Cushman & Wakefield Copyright 2025. No warranty or representation, express or implied, is made to the accuracy or completeness of the information contained herein, and same is submitted subject to errors, omissions, change of price, rental or other conditions, withdrawal without notice, and to any special listing conditions imposed by the property owner(s). As applicable, we make no representation as to the condition of the property (or properties) in question.



Lake Manawa

PROPERTY DETAILS

Availability

Sale Price	\$1,035,000
Gross AC	± 23 AC
Gross SF	± 1,001,880 SF
Zoning	A-2
Lot Dimensions	Irregular
Flood Plan	Levee Protected
Utilities	In Street

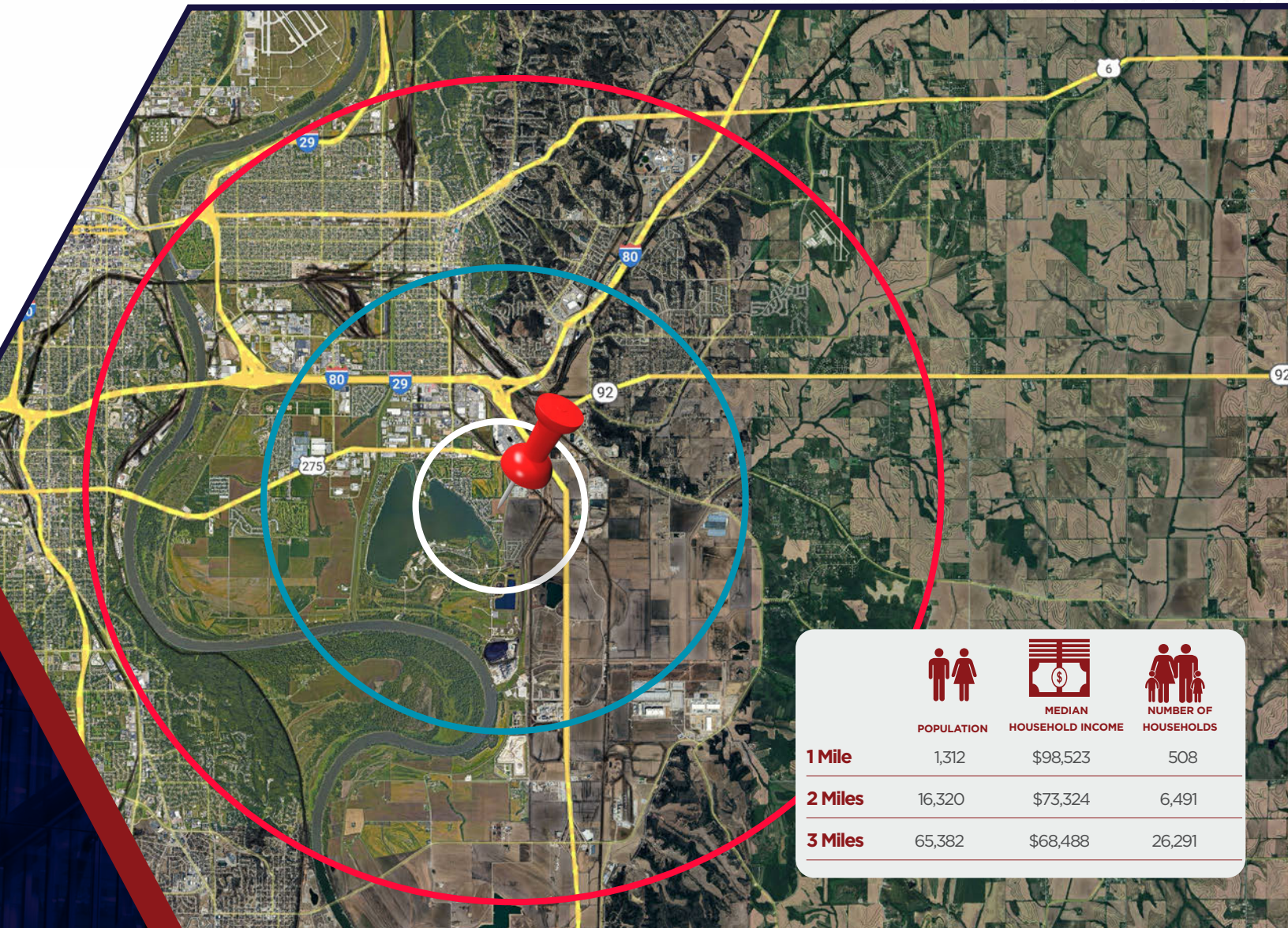
FOR MORE INFORMATION, PLEASE CONTACT:

JUSTIN RIVIERA

Senior Associate
+1 402 548 4064
justin.riviera@lundco.com

DENNY SCISCOE

Director of Industrial Services
+1 402 548 4051
denny.sciscoe@lundco.com



Independently Owned and Operated / A Member of the Cushman & Wakefield Alliance

©2025 Cushman & Wakefield. All rights reserved. The information contained in this communication is strictly confidential. This information has been obtained from sources believed to be reliable but has not been verified. NO WARRANTY OR REPRESENTATION, EXPRESS OR IMPLIED, IS MADE AS TO THE CONDITION OF THE PROPERTY (OR PROPERTIES) REFERENCED HEREIN OR AS TO THE ACCURACY OR COMPLETENESS OF THE INFORMATION CONTAINED HEREIN, AND SAME IS SUBMITTED SUBJECT TO ERRORS, OMISSIONS, CHANGE OF PRICE, RENTAL OR OTHER CONDITIONS, WITHDRAWAL WITHOUT NOTICE, AND TO ANY SPECIAL LISTING CONDITIONS IMPOSED BY THE PROPERTY OWNER(S). ANY PROJECTIONS, OPINIONS OR ESTIMATES ARE SUBJECT TO UNCERTAINTY AND DO NOT SIGNIFY CURRENT OR FUTURE PROPERTY PERFORMANCE.