

AVAILABLE FOR LEASE

17 RESEARCH PARK DRIVE

ST CHARLES, MO 63304



CUSHMAN &
WAKEFIELD

17 RESEARCH PARK DRIVE



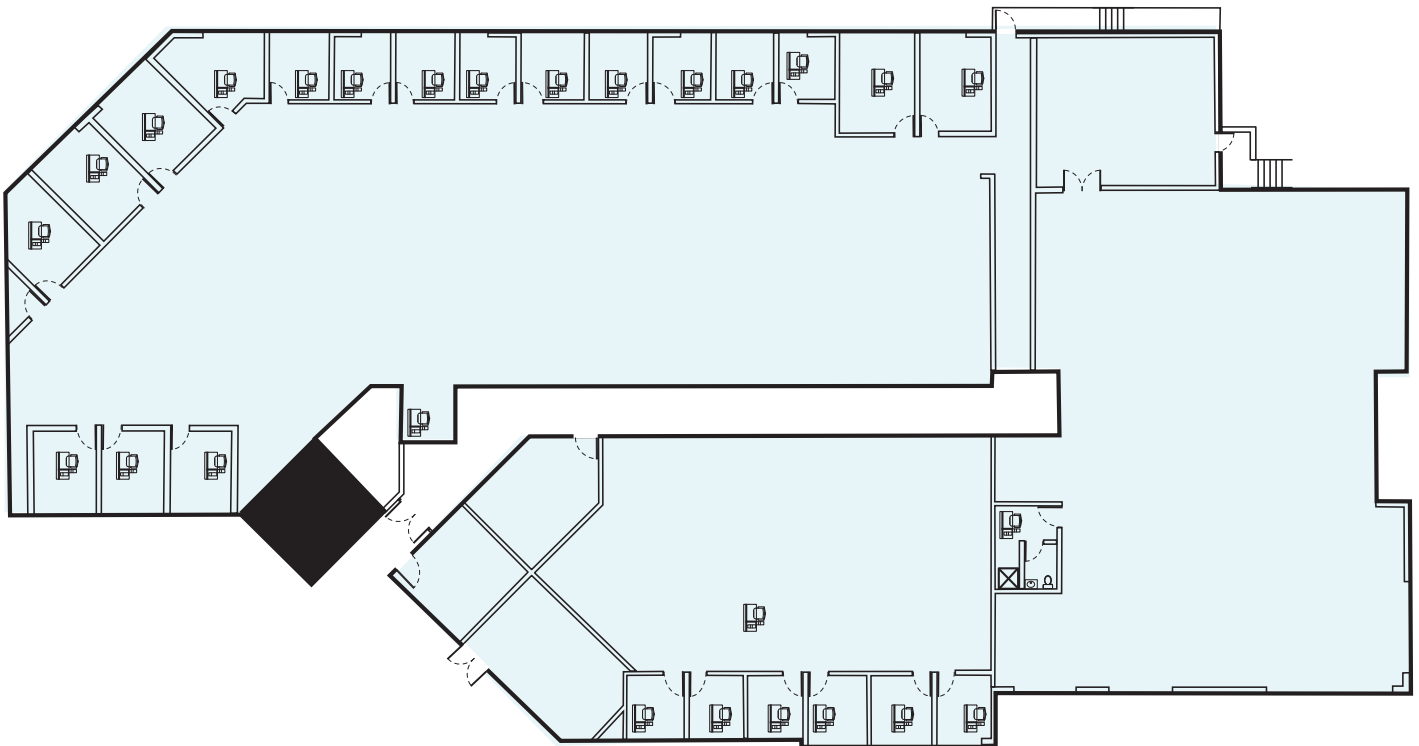
PROPERTY FEATURES

- First floor - 2,939 - 20,980 RSF available
- Fitness center with lockers and showers
- 70 seat auditorium
- Building signage available
- Asking Rate \$17.50 PSF
- 4.00/1,000 parking ratio



17 RESEARCH PARK DRIVE

FLOOR PLAN



2,939 - 20,980 SF

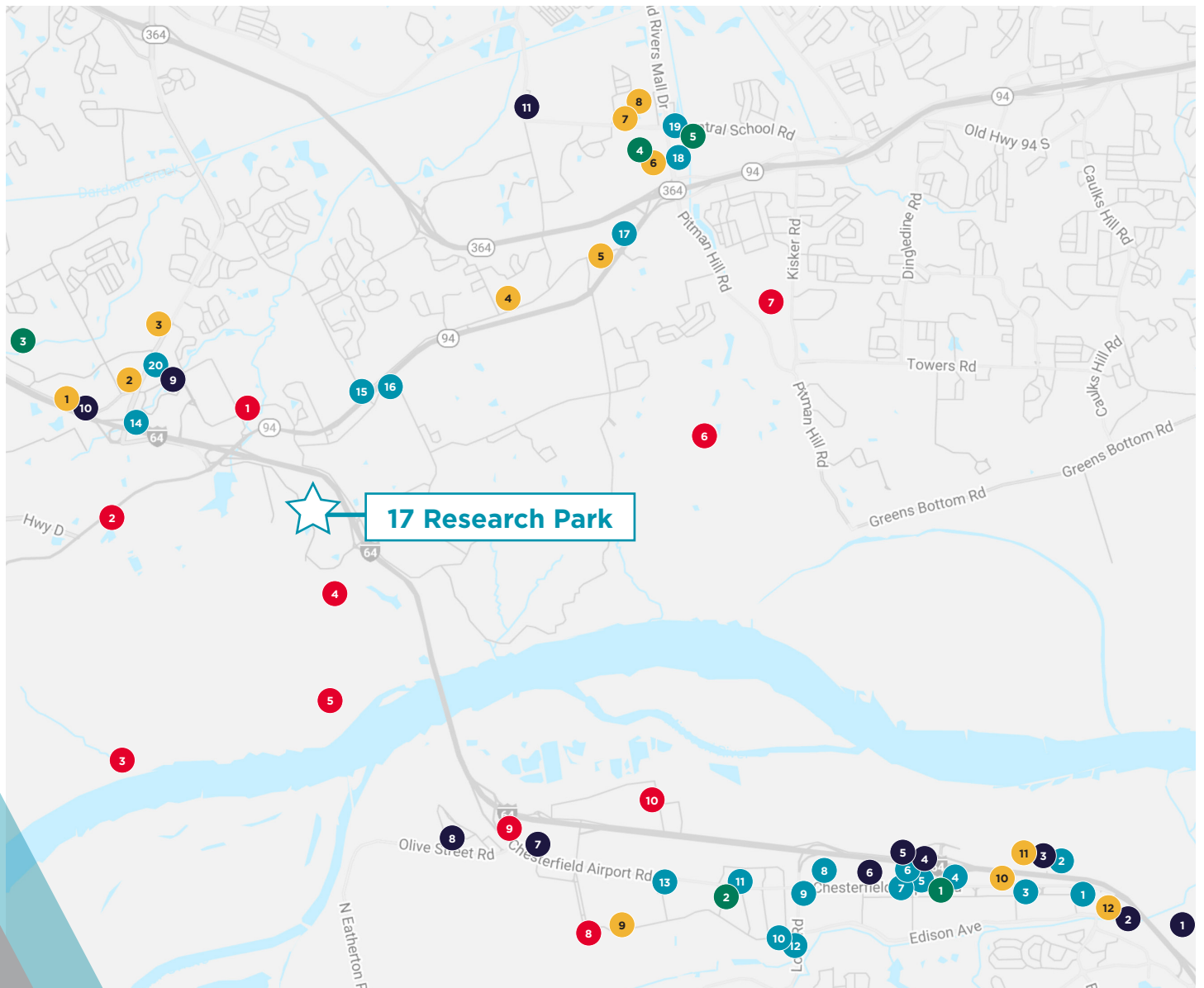
17 RESEARCH PARK DRIVE





17 RESEARCH PARK DRIVE

AMENITY MAP



Restaurants

- 1 Annie Gunn's Restaurant
- 2 Topgolf St. Louis - Chesterfield
- 3 The Original Pancake House
- 4 Kaldi's Coffee
- 5 Chick-fil-A
- 6 54th Street Scratch Grill & Bar
- 7 Syberg's Chesterfield
- 8 Siam Thai Restaurant
- 9 McDonald's
- 10 GIO Modern Italian
- 11 Scooter's Coffee
- 12 Firefly Grill STL
- 13 Wente's
- 14 Cracker Barrel Old Country Store
- 15 El Rancho Nuevo
- 16 Dairy Queen Grill & Chill
- 17 Noto Italian Restaurant
- 18 Chick-fil-A
- 19 Raising Cane's Chicken Fingers
- 20 McDonald's

Points of Interest

- 1 Persimmon Woods Golf Club
- 2 Busch Greenway Howell Trailhead
- 3 Weldon Spring Hollow Natural Area
- 4 Missouri Bluffs Golf Club
- 5 Katy Trail
- 6 Whitmoor Country Club
- 7 Veterans Tribute Park
- 8 Spirit of St Louis Airport
- 9 Maryville University Hockey Center
- 10 Chesterfield Valley Athletic Complex

Hotels

- 1 DoubleTree by Hilton Hotel
- 2 Hilton Garden Inn
- 3 Residence Inn
- 4 Hampton Inn & Suites
- 5 Courtyard
- 6 Holiday Inn Express & Suites
- 7 Comfort Inn & Suites
- 8 TownePlace Suites
- 9 Residence Inn
- 10 Holiday Inn Express & Suites
- 11 Oak Street Inn & Lounge

Fitness

- 1 Project Power Gym
- 2 F45 Training Dardenne Prairie South
- 3 Benifit Fitness
- 4 Broken Barbell Gym
- 5 Victory Performance Training
- 6 Orangetheory Fitness
- 7 Bloom Fitness Studio
- 8 Fit City Gym - Cottleville
- 9 CrossFit Chesterfield
- 10 20 Minutes To Fitness
- 11 House of Pain Gym
- 12 F45 Training Chesterfield

Retail

- 1 Chesterfield Commons Village
- 2 Premium Retail Services Inc
- 3 A&J Wholesalers & Retail Store
- 4 T-Mobile Authorized Retailer
- 5 The Home Depot

LEGEND

- Restaurants
- Points of interest
- Hotels
- Fitness
- Retail



For more information, please contact:

JAMES MOSBY SIOR, CCIM
Vice Chair
Direct: 314-746-0316
Jim.Mosby@cushwake.com

CHRIS SHEA, CCIM
Senior Associate
Direct: 314.297.0630
Chris.Shea@cushwake.com

7700 Forsyth Boulevard
Centene Plaza
St. Louis, MO 63105
cushmanwakefield.com



©2024 CUSHMAN & WAKEFIELD. ALL RIGHTS RESERVED. THE INFORMATION CONTAINED IN THIS COMMUNICATION IS STRICTLY CONFIDENTIAL. THIS INFORMATION HAS BEEN OBTAINED FROM SOURCES BELIEVED TO BE RELIABLE BUT HAS NOT BEEN VERIFIED. NO WARRANTY OR REPRESENTATION, EXPRESS OR IMPLIED, IS MADE AS TO THE CONDITION OF THE PROPERTY (OR PROPERTIES) REFERENCED HEREIN OR AS TO THE ACCURACY OR COMPLETENESS OF THE INFORMATION CONTAINED HEREIN, AND SAME IS SUBMITTED SUBJECT TO ERRORS, OMISSIONS, CHANGE OF PRICE, RENTAL OR OTHER CONDITIONS, WITHDRAWAL WITHOUT NOTICE, AND TO ANY SPECIAL LISTING CONDITIONS IMPOSED BY THE PROPERTY OWNER(S). ANY PROJECTIONS, OPINIONS OR ESTIMATES ARE SUBJECT TO UNCERTAINTY AND DO NOT SIGNIFY CURRENT OR FUTURE PROPERTY PERFORMANCE.