

Prologis Shopton 485 Logistics

2136, 2130 & 2124 SHOPTON ROAD | CHARLOTTE, NORTH CAROLINA 28217 USA



Q2 2025

Construction Update

- Pad ready
- Fully entitled with engineered construction drawings in hand
- Ideally suited for build-to-suit or spec-to-suit requirements with accelerated timelines





Three buildings with
±48,000 SF – 1M SF
available



Close proximity to
I-485, I-77 and
I-85



3 miles to Norfolk
Southern
Intermodal



8 miles to
Charlotte City
Center



7 miles to Charlotte
Douglas Int'l
Airport

Building Specifications

	BUILDING 1 2136 SHOPTON ROAD	BUILDING 2 2130 SHOPTON ROAD	BUILDING 3 2124 SHOPTON ROAD
Square Footage	±600,000 SF	±305,000 SF	±233,000 SF
Building Configuration	Cross Dock	Rear Load	Rear Load
Build-to-Suite Office	✓	✓	✓
Clear Height	40'	36'	36'
Column Spacing	57' x 56'	55' x 56'	55' x 56'
Dock Doors (9' x 10')	95	59	39
Drive-In Doors (12' x 14')	4	2	2
Car Parking Spaces	266	214	95
Trailer Parking Spaces	134	67	42
Truck Court Depth	185'	185'	185'
ESFR Sprinkler System	✓	✓	✓
Motion Sensor LED Lighting	✓	✓	✓





FUTURE SHOPTON ROAD EXTENSION

BEAM ROAD

SHOPTON ROAD

BUILDING 2
±305,000 SF


1056' (width)
290' (height)
59 DOCK DOORS (top)
185' (depth)

BUILDING 3
±233,000 SF


806' (width)
290' (height)
39 DOCK DOORS (top)
185' (depth)

BUILDING 1
±600,000 SF


990' (width)
600' (height)
47 DOCK DOORS (left)
48 DOCK DOORS (right)
185' (depth)



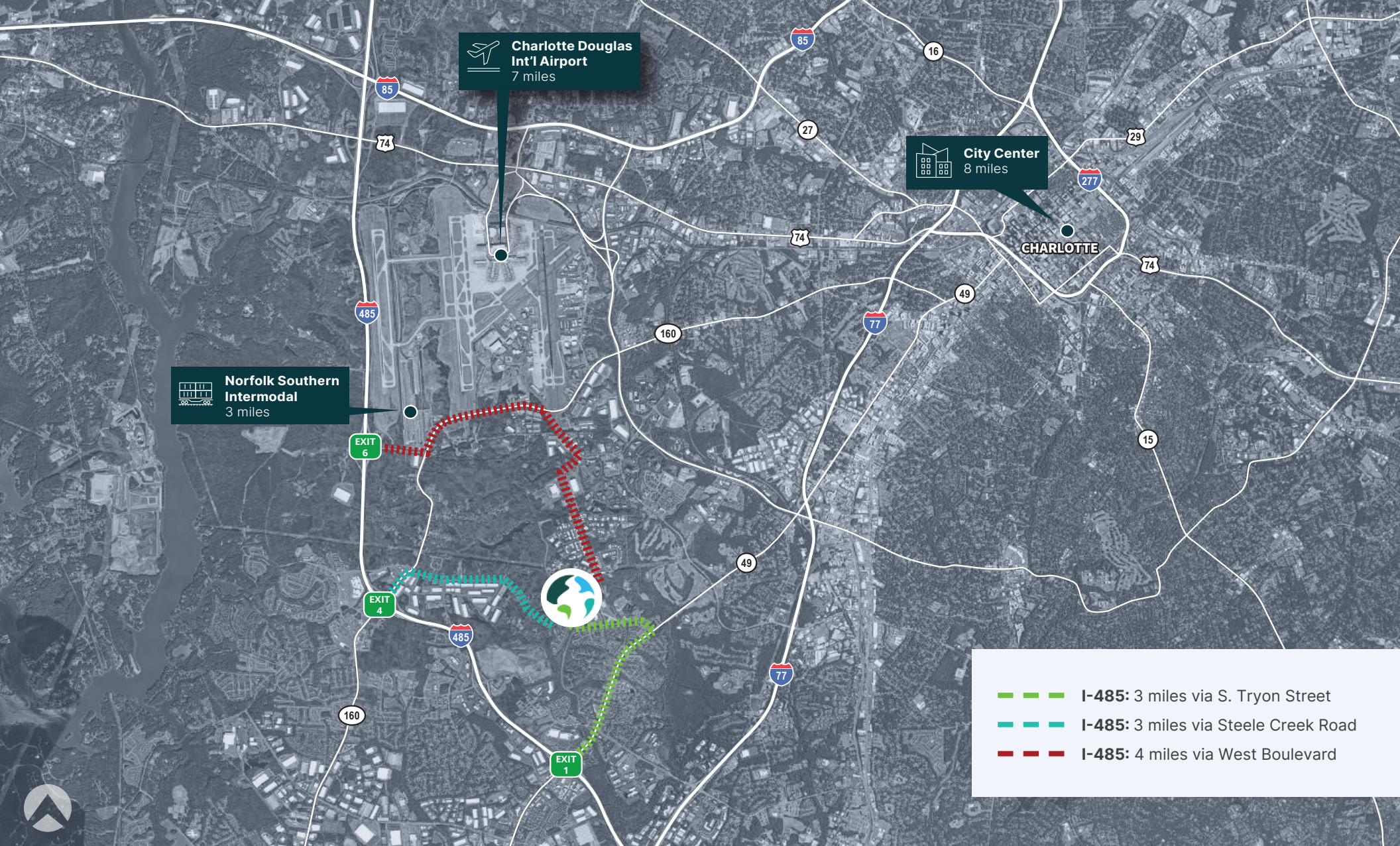
Proposed



Dock Door



Drive-in Door



Cushman & Wakefield
300 South Tryon Street
Suite 1110
Charlotte, NC 28202

Fermin Deoca

+1 704 335 4436 office
+1 225 235 7899 cell
fermin.deoca@cushwake.com

Matt Treble

+1 704 335 4430 office
+1 615 440 1939 cell
matt.treble@cushwake.com



Prologis – Charlotte

1900 South Boulevard, Suite 302
Charlotte, NC 28203
www.prologis.com

Caitlin Ciniero

+1 980 422 0807 office
+1 443 745 6463 cell
cciniero@prologis.com

Todd Summerfield

+1 704 426 8002 office
+1 410 441 1145 cell
tsummerfield@prologis.com

ABOUT PROLOGIS

Prologis is the leading owner, operator and developer of industrial logistics real estate with approximately 1.3 billion square feet owned and under management in 20 countries on four continents.

Data as of December 31, 2024, for assets the company owned or had investments in, on a wholly owned basis or through co-investment ventures, properties and development projects.